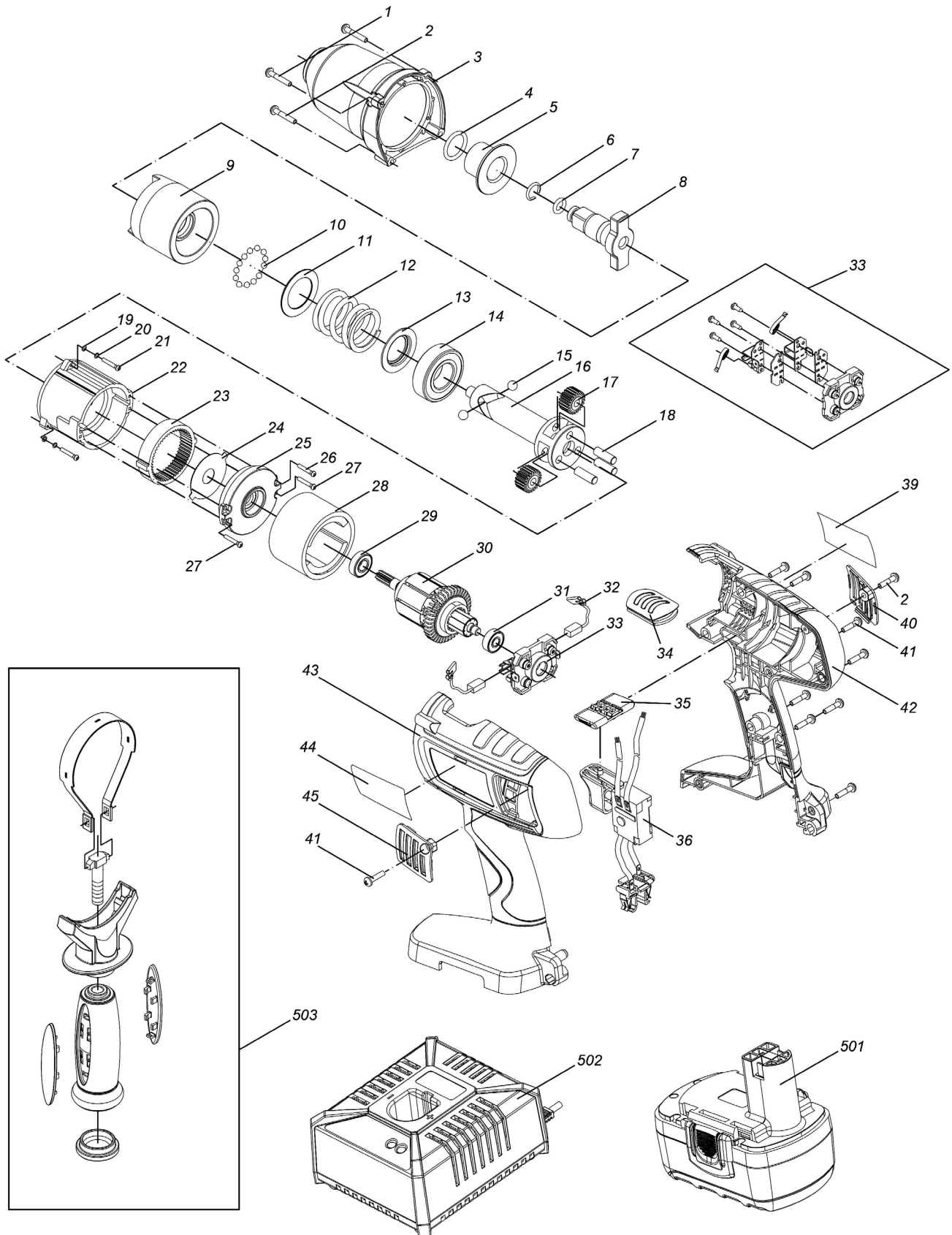




Parts Information:  
**Cordless Impact Wrench 19.2V 1/2" Sq Drive  
285lb.ft with 2 Batteries  
Model No: CP1950**



**NOTE:** It is our policy to continually improve products and as such we reserve the right to alter data, specifications and component parts without prior notice.

**IMPORTANT:** No liability is accepted for incorrect use of product.

**WARRANTY:** Guarantee is 12 months from purchase date, proof of which will be required for any claim.

**Sealey Group**, Kempson Way, Suffolk Business Park, Bury St Edmunds, Suffolk. IP32 7AR



01284 757500



01284 703534



sales@sealey.co.uk



www.sealey.co.uk



Parts Information:  
**Cordless Impact Wrench 19.2V 1/2" Sq Drive  
 285lb.ft with 2 Batteries  
 Model No: CP1950**

Item	Part No.	Description
1	CP1950.01	RD HEAD S/T SCREW 3.4 X 22
2	CP1950.02	RD HEAD S/T SCREW 3.5 X 25
3	CP1950.03	GEAR HOUSING
4	CP1950.04	O-RING (18x2.65)
5	CP1950.05	SPINDLE SLEEVE
6,7,8	CP1950.08	FRONT IMPACT ASS'Y
9	CP1950.09	REAR IMPACT BLOCK
10	SB-4.9	STEEL BALL 4.9mm
11	CP1950.11	SEAL RING
12	CP1950.12	SPRING
13	CP1950.13	SPRING HOLDER
14	B/6004-2RS	BEARING 6004-2RS
15	SB-6.4	STEEL BALL 6.4mm
16	CP1950.16	DRIVE SPINDLE
17	CP1950.17	PLANET GEAR (SET OF 3)
18	CP1950.18	CYLINDER PIN
19	FWM4.SB	FLAT WASHER M4 BLACK (SINGLE)
20	SWM4.SB	SPRING WASHER M4 BLACK (SINGLE)
21	MSP416.SB	MACHINE SCREW PAN HEAD PHILLIPS M4x16mm BLACK
22	CP1950.22	GEAR HOUSING
23	CP1950.23	INTERNAL GEAR
24	CP1950.24	WASHER WITH 2 LUGS M12X42
25	CP1950.25	GEARBOX COVER
26	CP1950.26	RD HEAD S/T SCREW M3X8 BLACK
27	CP1950.27	RD HEAD S/T SCREW M2.9 X 13

Item	Part No.	Description
28	CP1950.28	STATOR
29	B/698-2RS	BEARING 698-2RS
30	CP1950.30	ROTOR
31	B/606ZZ	BEARING 606ZZ
32	CP1950.32	CARBON BRUSH (SINGLE)
33	CP1950.33	BRUSH HOLDER ASSEMBLY
--	CP1950.33-1	TAPPING SCREW (ST2.9x9.5) (NOT SHOWN)
34	CP1950.34	TOP COVER
35	CP1950.35	FORWARD/REVERSE ROD
36	CP1950.36	SWITCH ASS'Y
39	CP1950.39	LABEL (RATING)
40	CP1950.40	BRUSH COVER (RIGHT SIDE)
41	CP1950.41	RD HEAD S/T SCREW 3.5 X 16
42	CP1950.42	HOUSING (RIGHT SIDE)
43	CP1950.43	HOUSING (LEFT SIDE)
44	CP1950.44	NAME PLATE
45	CP1950.45	BRUSH COVER (LEFT SIDE)
501	CP1950BP	CORDLESS POWER TOOL BATTERY 19.2V
502	CP1950.502	BATTERY CHARGER
503	CP1950.503	AUXILIARY HANDLE
--	CP1950.502L	BATTERY CHARGER LABEL (SET OF 3) (NOT SHOWN)
--	CP1950.502A	PLUG ADAPTOR (EURO-3PIN) (NOT SHOWN)
--	CP1950.L	BATTERY LABEL (NOT SHOWN)
--	CP1950.C	BLOW MOULD CASE (NOT SHOWN)

**NOTE:** It is our policy to continually improve products and as such we reserve the right to alter data, specifications and component parts without prior notice.

**IMPORTANT:** No liability is accepted for incorrect use of product.

**WARRANTY:** Guarantee is 12 months from purchase date, proof of which will be required for any claim.

**Sealey Group**, Kempson Way, Suffolk Business Park, Bury St Edmunds, Suffolk. IP32 7AR



01284 757500



01284 703534



sales@sealey.co.uk



www.sealey.co.uk