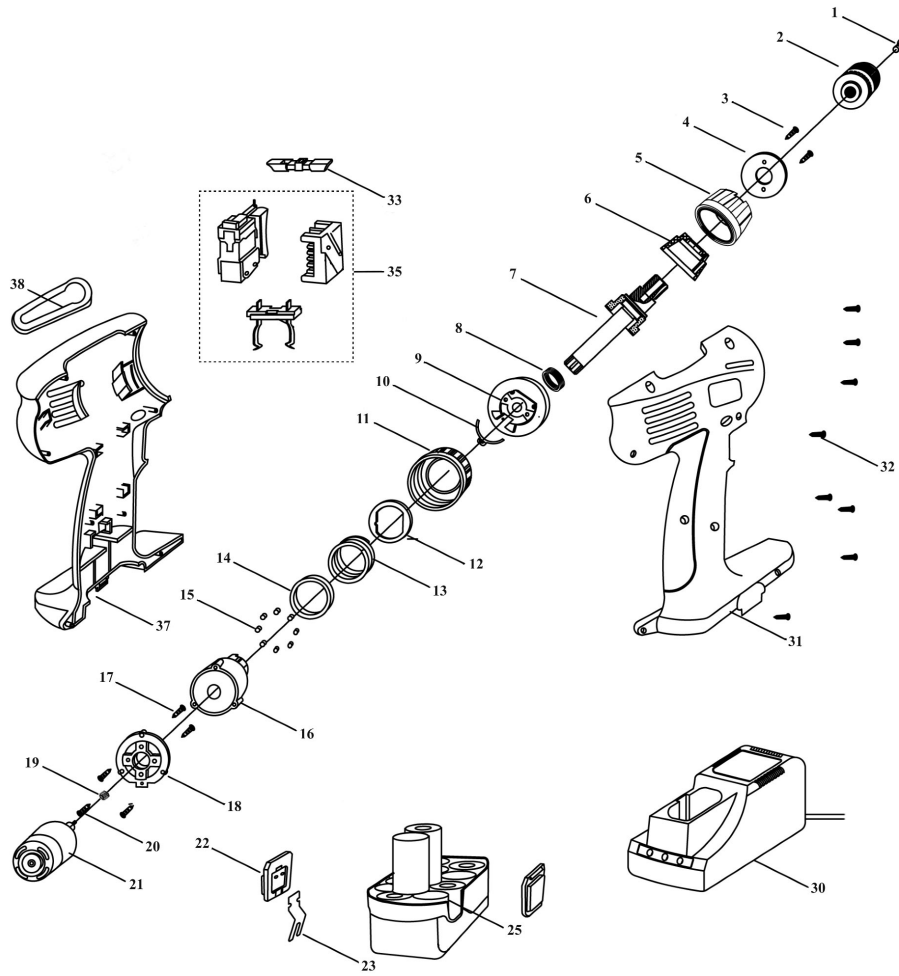




Parts Information:
Cordless Hammer Drill/Driver 18V 1hr Charge
Model No: CP1801V.V2



Item	Part No.	Description
1	CP1801VV2-01	SCREW
2	DC/J-38HC	DRILL CHUCK KEYLESS 3/8" X 24 THROUGH HO
3	CP1801VV2-03	SCREW
4	CP1801VV2-04	RING
5	CP1801VV2-05	IMPACT TORQUE RING
6	CP1801VV2-06	IMPACT SUPPORT
7	CP1801VV2-07	IMPACT SPINDLE (C/W SPRING)
8	CP1801VV2-07	IMPACT SPINDLE (C/W SPRING)
9	CP1801VV2-09	IMPACT PLATE
10	CP1801VV2-10	CIRCLIP
11	CP1801VV2-11	TORQUE SETTING RING (c/w SPACER)
12	CP1801VV2-11	TORQUE SETTING RING (c/w SPACER)
13	CP1801VV2-13	SPRING
14	CP1801VV2-14	SPACER
15	SB-4.0	STEEL BALL 4.0mm
16	CP1801VV2-16	GEARBOX

Item	Part No.	Description
17	CP1801VV2-17	SCREW
18	CP1801VV2-18	CONNECTION CLIP
19	CP1801VV2-19	MOTOR GEAR
20	CP1801VV2-20	SCREW
21	CP1801VV2-21	MOTOR
22	CP1801VV2-22	BATTERY CLIP
23	CP1801VV2-23	BATTERY SPRING CLIP
25	CP2518BP	CORDLESS POWER TOOL BATTERY 18V FOR CP25
30	CP1801V.C	MAINS ADAPTOR & CHARGER FOR CP1801V
31	CP1801VV2-31	HOUSING (RIGHT)
32	CP1801VV2-32	SCREW
33	CP1801VV2-33	SWITCH KNOB
35	CP12035V.28	SWITCH ASS'Y (PARTS 28-31)
37	CP1801VV2-37	HOUSING (LEFT)
38	CP1801VV2-38	BIT HOLDER
--	CP1801V.DSB	DOUBLE ENDED SCREWDRIVER BIT,PH2 x S6 (NOT SHOWN)

NOTE: It is our policy to continually improve products and as such we reserve the right to alter data, specifications and component parts without prior notice.

IMPORTANT: No liability is accepted for incorrect use of product.

WARRANTY: Guarantee is 12 months from purchase date, proof of which will be required for any claim.

Sealey Group, Kempson Way, Suffolk Business Park, Bury St Edmunds, Suffolk. IP32 7AR



01284 757500



01284 703534



sales@sealey.co.uk



www.sealey.co.uk