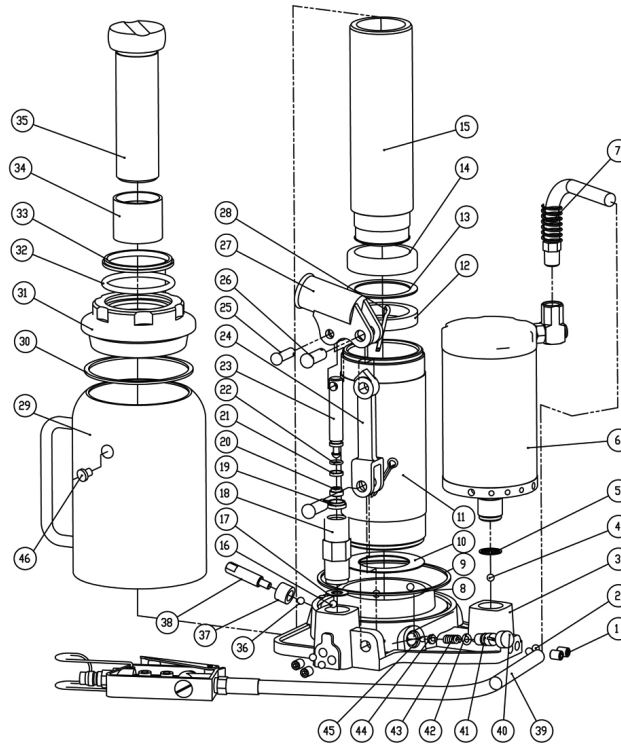


Parts Information: Bottle Jack Yankee 15ton Manual/Air Hydraulic Model No: AM15E



| Item | Part No. | Description |
|------|----------|--------------------|
| 1 | AM15E.01 | Bolt m10x7 (2PK) |
| 2 | AM15E.02 | Steel Ball (2PCS) |
| 3 | AM15E.03 | Base |
| 4 | SB-7.9 | Steel Ball 7.9mm |
| 5 | AM15E.05 | Disc With Cross |
| 6 | AM15E.06 | Air Cylinder |
| 7 | AM15E.39 | Air Hose Assembly |
| 8 | SB-6.4 | Steel Ball 6.4mm |
| 9 | AM15E.09 | Large Nylon Ring |
| 10 | AM15E.10 | Washer |
| 11 | AM15E.11 | Hydraulic Cylinder |
| 12 | AM15E.12 | Oil Seal |
| 13 | AM15E.13 | Back-Up Ring |
| 14 | AM15E.14 | Support Block |
| 15 | AM15E.15 | Set Bolt |
| 16 | SB-6.4 | Steel Ball 6.4mm |
| 17 | AM15E.05 | Disc With Cross |
| 18 | AM15E.18 | Manual Cylinder |
| 19 | AM15E.19 | U-Seal |
| 20 | AM15E.20 | U-Seal |
| 21 | AM15E.21 | Back-Up Ring |
| 22 | AM15E.22 | O-Ring |
| 23 | AM15E.23 | Manual Piston |
| 24 | AM15E.24 | Link |

| Item | Part No. | Description |
|------|----------|-----------------------------|
| 25 | AM15E.25 | Pin |
| 26 | AM15E.26 | Pin |
| 27 | AM15E.27 | Handle Sleeve |
| 28 | AM15E.28 | Snap Pin |
| 29 | AM15E.29 | Oil Tank |
| 30 | AM15E.30 | Nylon Seal |
| 31 | AM15E.31 | Top Nut |
| 32 | AM15E.32 | O-Ring |
| 33 | AM15E.33 | Seal |
| 34 | AM15E.34 | Nut |
| 35 | AM15E.35 | Bolt m36x107 |
| 36 | SB-6.4 | Steel Ball 6.4mm |
| 37 | AM15E.37 | Rubber Seal |
| 38 | AM15E.38 | Release Valve |
| 39 | AM15E.39 | Air Hose Assembly |
| 40 | AM15E.40 | Plastic Plug |
| 41 | AM15E.41 | Relief Valve Bolt |
| 42 | AM15E.42 | O-Ring |
| 43 | AM15E.43 | Spring |
| 44 | AM15E.44 | Steel Ball Bolt |
| 45 | SB-5.6 | Steel Ball 5.6mm |
| 46 | AM15E.46 | Oil Screw Assembly |
| -- | SJ20T.18 | Handle Complete (NOT SHOWN) |

NOTE: It is our policy to continually improve products and as such we reserve the right to alter data, specifications and component parts without prior notice.

IMPORTANT: No liability is accepted for incorrect use of product.

WARRANTY: Guarantee is 12 months from purchase date, proof of which will be required for any claim.