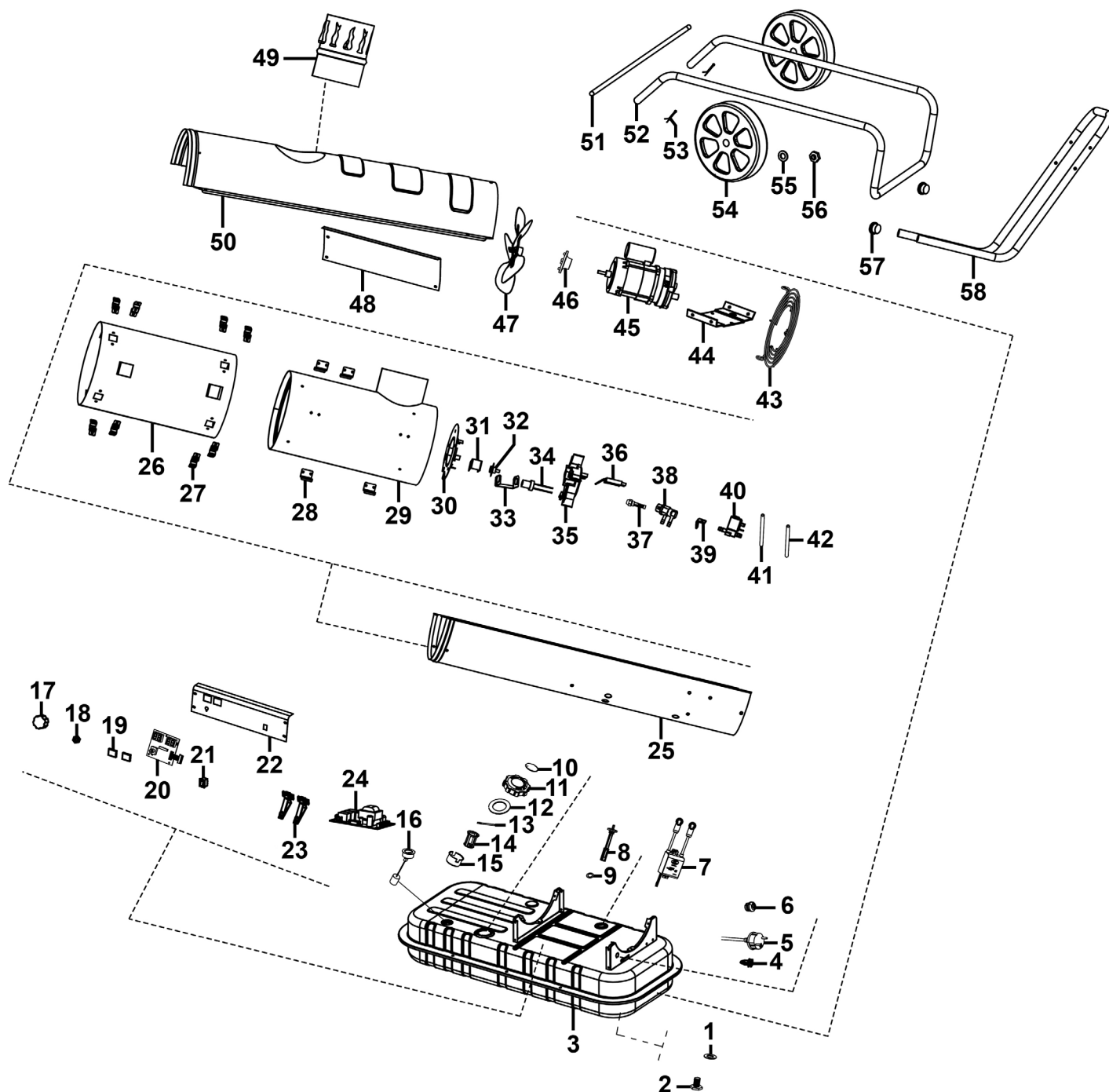


Parts Information: Space Warmer® Indirect Kerosene/Diesel Heater with Wheels 68,000Btu/hr Model No: ABI600



Item	Part No.	Description	Qty
1	ABI600-01	Oil Drain Seal Ring Ø12	1
2	ABI600-02	Oil Drain Screw M12x20	1
3	ABI600-03	Fuel Tank	1
4	ABI600-04	Probe Bracket	1
5	ABI600-05	Power Cord	1

Item	Part No.	Description	Qty
6	ABI600-06	Cable Grip	1
7	ABI600-07	Ignition Transformer	1
8	ABI600-08	Fuel Filter Assembly	1
9	ABI600-09	Sealing Ring (Ø20 x 30 x 2.5)	1
10	ABI600-10	Breather Cover	1

NOTE: It is our policy to continually improve products and as such we reserve the right to alter data, specifications and component parts without prior notice. There may be alternative versions of this product, please contact us should you require this information.

IMPORTANT: No liability is accepted for incorrect use of product. Spare parts must be fitted by a competent person

WARRANTY: Guarantee is 12 months from purchase date, proof of which will be required for any claim.

Jack Sealey Ltd t/a Sealey Group, Kempson Way, Suffolk Business Park, Bury St Edmunds, Suffolk, IP32 7AR UK

Jack Sealey (EU) Ltd t/a Sealey Group, Farney Street, Carrickmacross, Co. Monaghan, A81 PK68 Ireland

Tel: 01284 757500 • Email: sales@sealey.co.uk • Web: www.sealey.co.uk



Parts Information:
**Space Warmer® Indirect Kerosene/Diesel
Heater with Wheels 68,000Btu/hr
Model No: ABI600**

Item	Part No.	Description	Qty
11	ABI600-11	Fuel Tank Cap	1
12	ABI600-12	Fuel Tank Cap Seal	1
13	ABI600-13	Fuel Tank Cap Shaft (Ø3.5 x 49)	1
14	ABI600-14	Oil Inlet Filter	1
15	ABI600-15	Oil Inlet Filter Holder	1
16	ABI600-16	Oil Leveler	1
17	ABI600-17	Thermostat Knob	1
18	ABI600-18	Thermo Cut-Off Adjustment Nut	1
19	ABI600-19	Display Window	2
20	ABI600-20	PCB c/w Display	1
21	ABI600-21	On/Off Switch	1
22	ABI600-22	Control Panel	1
23	ABI600-23	PCB Support	2
24	ABI600-24	PCB c/w Fuse	1
25	ABI600-25	Lower Cover	1
26	ABI600-26	Heat Insulation Casing	1
27	ABI600-27	Combustion Chamber Bracket	8
28	ABI600-28	Combustion Chamber Hook	4
29	ABI600-29	Combustion Chamber	1
30	ABI600-30	Air Flow Guide	1
31	ABI600-31	Reset Thermostat Bracket	1
32	ABI600-32	Reset Thermostat 10A/250V	1
33	ABI600-33	Photocell Ass'y Bracket	1
34	ABI600-34	Photocell Ass'y	1

Item	Part No.	Description	Qty
35	ABI600-35	Burner Head	1
36	ABI600-36	Ignition Needle	1
37	ABI600-37	Nozzle Assembly	1
38	ABI600-38	Nozzle Adaptor	1
39	ABI600-39	Fuel Valve Bracket	1
40	ABI600-40	Fuel Valve AC220V~240V/50Hz	1
41	ABI600-41	Gas Hose	1
42	ABI600-42	Oil Hose	1
43	ABI600-43	Air Inlet Grille	1
44	ABI600-44	Motor Support	1
45	ABI600-45	Motor Assembly AC220V~240V/50Hz	1
46	ABI600-46	Fan Blade Base	1
47	ABI600-47	Fan Blade	1
48	ABI600-48	Side Plate	1
49	ABI600-49	Chimney	1
50	ABI600-50	Upper Cover	1
51	ABI600-51	Wheel Axle	1
52	ABI600-52	Wheel Support Frame	1
53	ABI600-53	Split Pin Ø2.8	2
54	ABI600-54	Fixed Wheel	2
55	FWM12.S	Flat Washer M12 Zinc	2
56	SN12.SD	Steel Nut M12 Domed Zinc	2
57	ABI600-57	End Plug	2
58	ABI600-58	Frame Handle	1

NOTE: It is our policy to continually improve products and as such we reserve the right to alter data, specifications and component parts without prior notice. There may be alternative versions of this product, please contact us should you require this information.

IMPORTANT: No liability is accepted for incorrect use of product. Spare parts must be fitted by a competent person

WARRANTY: Guarantee is 12 months from purchase date, proof of which will be required for any claim.