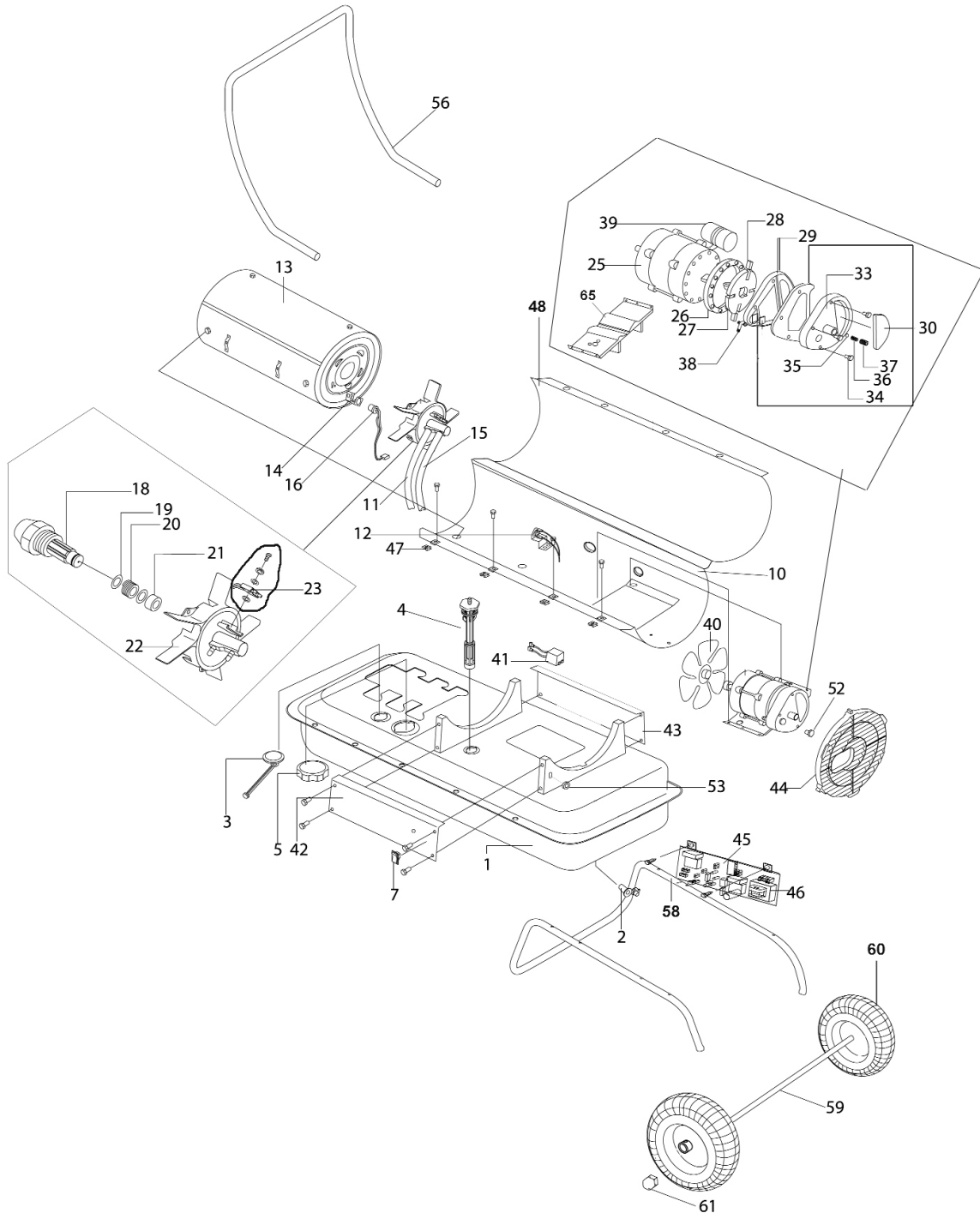




Parts Information:
**Space Warmer® Paraffin/Kerosene/Diesel
Heater 100,000Btu/hr with Wheels**
Model No: AB100E



NOTE: It is our policy to continually improve products and as such we reserve the right to alter data, specifications and component parts without prior notice.

IMPORTANT: No liability is accepted for incorrect use of product.

WARRANTY: Guarantee is 12 months from purchase date, proof of which will be required for any claim.

Sealey Group, Kempson Way, Suffolk Business Park, Bury St Edmunds, Suffolk. IP32 7AR



01284 757500



01284 703534



sales@sealey.co.uk



www.sealey.co.uk



Parts Information:
**Space Warmer® Paraffin/Kerosene/Diesel
 Heater 100,000Btu/hr with Wheels
 Model No: AB100E**

1	P70-002-0200	FUEL TANK ASSEMBLY
2	P70-002-0105	DRAIN PLUG
3	P70-007-0210	FUEL GAUGE ASSEMBLY
4	P70-003-0200	FUEL FILTER ASS'Y
5	P70-006-0120	FUEL CAP ASS'Y (NEW CAP AND GASKET)33mm
7	P70-038-0110	POWER SWITCH (ROCKER)
--	P70-040-0100	WINDOW DISPLAY (NOT SHOWN)
10	P70-001-1622	LOWER COVER
11	P70-035-0300	AIR HOSE
12	P70-019-0205	TEMPERATURE LIMIT SWITCH
13	P70-011-0300	COMBUSTION CHAMBER
141	P70-010-0101	FLAME SENSOR BRACKET
15	P70-036-0300	FUEL HOSE
16	P70-016-0100	FLAME SENSOR
18	P70-015-0305	NOZZLE
19	P70-015-0101	NOZZLE SEAL WASHER (LIGHT MATERIAL)
20	P70-015-0102	NOZZLE SEAL SPRING
21	P70-015-0103	NOZZLE SLEEVE
22	P70-014-0301	BURNER HEAD (SO)
23	P70-052-0210	SPARK PLUG
25	P70-021-0511	MOTOR
26	P70-020-0401	PUMP BODY
27	P70-022-0220	ROTOR KIT 1/2"
--	P70-022-0200	ROTOR KIT 5/8" (c/w VANES/CLIP) (NOT SHOWN)
28	P70-022-0230	ROTOR BLADE 1/2" (SET OF 4)
--	P70-022-0202	ROTOR BLADE (SET OF 4) 5/8" (NOT SHOWN)
29	P70-020-0102	END PUMP COVER
30	P70-054-0100	FILTER KIT
--	P70-054-0101	INTAKE FILTER (NOT SHOWN)

Item	Part No.	Description
--	P70-054-0102	FILTER (NOT SHOWN)
33	P70-020-0103	END FILTER COVER
34	P70-055-0100	PLUG/PUMP ADJUST KIT
35	SB-6.4	STEEL BALL 6.4mm
36	P70-020-0105	SPRING
37	P70-020-0106	ADJUSTING SCREW
38	P70-014-0104	NIPPLE
39	P70-020-0220	CAPACITOR
40	P70-024-0300	FAN ASSEMBLY
41	P70-037-0300	IGNITOR
42	P70-008-0300	RIGHT SIDE COVER
43	P70-009-0150	LEFT SIDE COVER
44	P70-016-0200	FAN GUARD
45	P70-027-0160	MAIN PCB ASSEMBLY
46	P70-027-0101	FUSE T5L 250V 2x0.5
47	P70-001-0105	CLIP NUT
48	P70-001-1001	UPPER COVER
--	P70-041-1510	WHEEL AXLE 540mm (NOT SHOWN)
--	P70-041-1400	WHEEL, FIXED (250x12x55) (NOT SHOWN)
52	P70-002-0110	END COVER PLUG
53	P70-033-0200	CORD BUSHING
56	P70-042-0100	FRONT HANDLE (SO)
58	P70-041-0101	WHEEL SUPPORT FRAME
59	P70-041-0103	WHEEL AXLE (57.5CM)
60	P70-041-0150	WHEEL,PNEUMATIC (260x12x70)
61	SN12.SD	STEEL NUT M12 DOMED (SINGLE)
--	P70-056-0210	HARDWARE KIT (NOT SHOWN)
65	P70-020-0610	SUPPORT PLATE

NOTE: It is our policy to continually improve products and as such we reserve the right to alter data, specifications and component parts without prior notice.

IMPORTANT: No liability is accepted for incorrect use of product.

WARRANTY: Guarantee is 12 months from purchase date, proof of which will be required for any claim.

Sealey Group, Kempson Way, Suffolk Business Park, Bury St Edmunds, Suffolk. IP32 7AR



01284 757500



01284 703534



sales@sealey.co.uk



www.sealey.co.uk