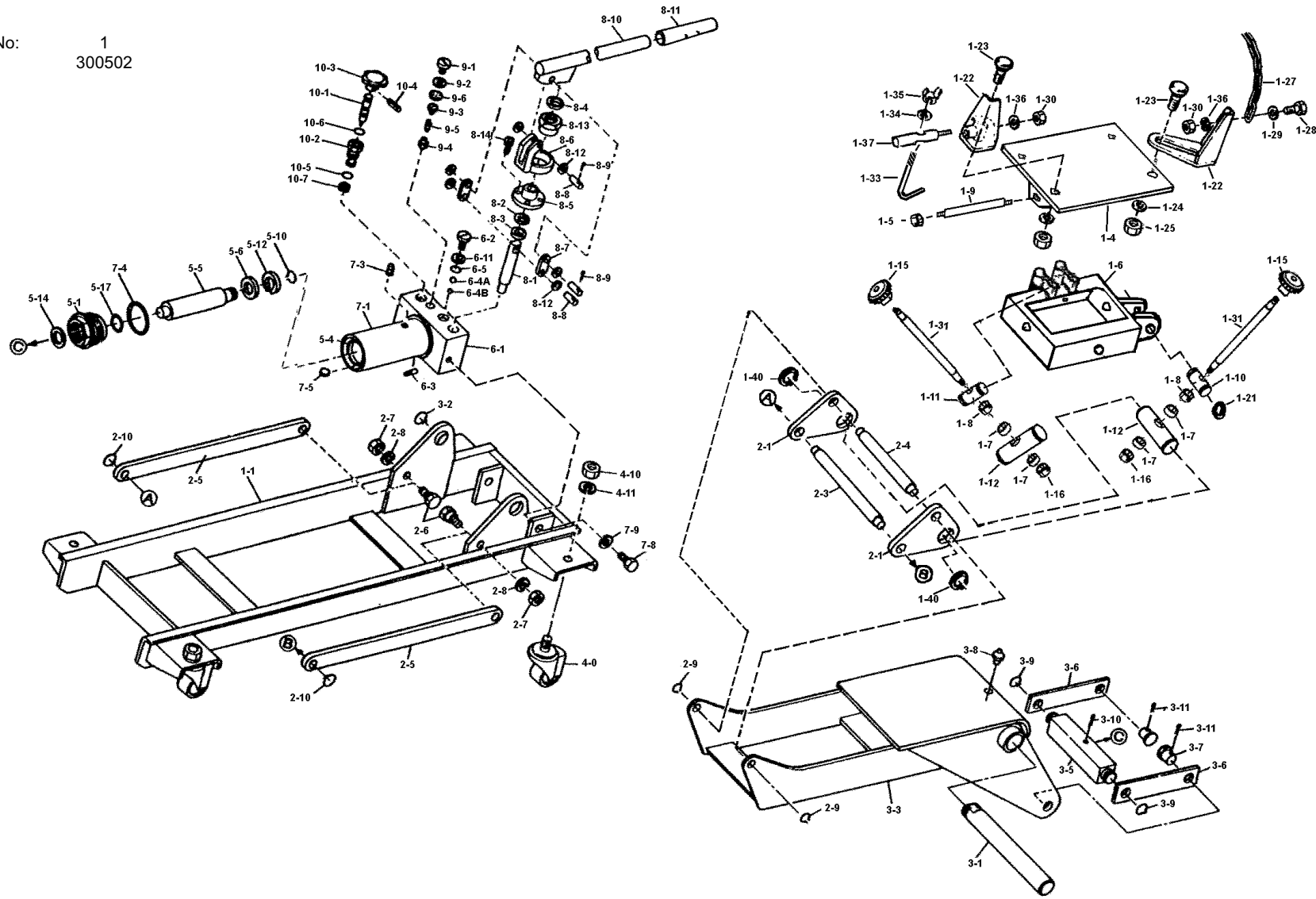


PARTS DIAGRAM FOR:
FLOOR TRANSMISSION JACK Model No: 800CE.V2

Issue No: 1
Date: 300502





PARTS LIST FOR: FLOOR TRANSMISSION JACK Model No: **800CE.V2**

NO	PART NO	DESCRIPTION
1-1	800CE.V2.1-1	FRAME
1-4	800CE.V2.1-4	PLATE
1-5	800CE.V2.1-5	NUT
1-6	800CE.V2.1-6	TILTING SADDLE
1-7	800CE.V2.1-7	THRUST BEARING
1-8	800CE.V2.1-8	COLLAR
1-9	800CE.V2.1-9	ROD
1-10	800CE.V2.1-10	PIN WITH FEMALE SCREW
1-11	800CE.V2.1-11	PIN
1-12	800CE.V2.1-12	PIN
1-15	800CE.V2.1-15	GRIP
1-16	800CE.V2.1-16	NUT
1-21	800CE.V2.1-21	SNAP RING
1-22	800CE.V2.1-22	BRACKET
1-23	800CE.V2.1-23	BOLT
1-24	800CE.V2.1-24	WASHER
1-25	800CE.V2.1-25	NUT
1-27	800CE.V2.1-27	CHAIN
1-28	800CE.V2.1-28	BOLT
1-29	800CE.V2.1-29	WASHER
1-30	800CE.V2.1-30	NUT
1-31	800CE.V2.1-31	SCREW
1-33	800CE.V2.1-33	CHAIN HOOK BOLT
1-34	800CE.V2.1-34	WASHER
1-35	800CE.V2.1-35	WING NUT
1-36	800CE.V2.1-36	SPRING WASHER
1-37	800CE.V2.1-37	RETAINING BOLT
1-40	800CE.V2.1-40	SNAP RING
2-1	800CE.V2.2-1	CONNECTING JOINT
2-3	800CE.V2.2-3	LINK ROD PIN
2-4	800CE.V2.2-4	ARM PIN
2-5	800CE.V2.2-5	LINK ROD
2-6	800CE.V2.2-6	LINK ROD PIN

NO	PART NO	DESCRIPTION
2-7	800CE.V22-7	NUT
2-8	800CE.V22-8	SPRING WASHER
2-9	800CE.V22-9	SNAP RING
2-10	800CE.V22-10	SNAP RING
3-1	800CE.V23-1	ARM PIN
3-2	800CE.V23-2	SNAP RING
3-3	800CE.V23-3	ARM
3-5	800CE.V23-5	CONNECTING JOINT
3-6	800CE.V23-6	TENSION ROD
3-7	800CE.V23-7	TENSION ROD PIN
3-8	800CE.V23-8	GREASE NIPPLE
3-9	800CE.V23-9	SNAP RING
3-10	800CE.V23-10	COTTER
3-11	800CE.V23-11	COTTER PIN
4-0	800CE.V24-0	CASTER
4-10	800CE.V24-10	NUT
4-11	800CE.V24-11	SPRING PIN
5-1	800CE.V25-1	TANK NUT
5-4	800CE.V25-4	CYLINDER
5-5	800CE.V25-5	PISTON ROD
5-6	800CE.V25-6	PISTON PACKING
5-10	800CE.V25-10	SNAP RING
5-12	800CE.V25-12	U-PACKING
5-14	800CE.V2.5-14	OIL RING
5-17	800CE.V25-17	O-RING
6-1	800CE.V26-1	OIL BOX
6-2	800CE.V26-2	BOLT
6-3	800CE.V26-3	OIL STRAINER
6-4A	800CE.V26-4A	STEEL BALL
6-4B	800CE.V26-4B	STEEL BALL
6-5	800CE.V2.6-5	O-RING
6-11	800CE.V2.6-11	BACK-UP RING
7-1	800CE.V2.7-1	OIL TANK

NO	PART NO	DESCRIPTION
7-3	800CE.V2.7-3	OIL FILL PLUG
7-4	800CE.V2.7-4	O-RING
7-5	800CE.V2.7-5	MAGNET
7-8	800CE.V2.7-8	BOLT
7-9	800CE.V2.7-9	SPRING WASHER
8-1	800CE.V2.8-1	PUMP PLUNGER
8-2	800CE.V2.8-2	BACK-UP RING
8-3	800CE.V2.8-3	SEAL
8-4	800CE.V2.8-4	O-RING
8-5	800CE.V2.8-5	PLUNGER FLANGE
8-6	800CE.V2.8-6	BRACKET
8-7	800CE.V2.8-7	LINK
8-8	800CE.V2.8-8	PIN
8-9	800CE.V2.8-9	COTTER PIN
8-10	800CE.V2.8-10	HANDLE
8-11	800CE.V2.8-11	GRIP
8-12	800CE.V2.8-12	WASHER
8-13	800CE.V2.8-13	PLUNGER GUIDE
8-14	800CE.V2.8-14	HEX BOLT
9-1	800CE.V2.9-1	SAFETY VALVE BOLT
9-2	800CE.V2.9-2	PACKING
9-3	800CE.V2.9-3	RETAINER
9-4	800CE.V2.9-4	SAFETY VALVE
9-5	800CE.V2.9-5	SPRING
9-6	800CE.V2.9-6	PACKING
10-1	800CE.V2.10-1	RELEASE VALVE
10-2	800CE.V2.10-2	RELEASE VALVE GUIDE
10-3	800CE.V2.10-3	RELEASE VALVE GRIP
10-4	800CE.V2.10-4	SPRING PIN
10-5	800CE.V2.10-5	O-RING
10-6	800CE.V2.10-6	O-RING
10-7	800CE.V2.10-7	COPPER PACKING
RK	800CE.V2.RK	REPAIR KIT



Sealey Group,
Bury St. Edmunds, Suffolk.



01284 757500



01284 703534

E-mail: sales@sealey.co.uk

NOTE: It is our policy to continually improve products and as such we reserve the right to alter data, specifications and component parts without prior notice.