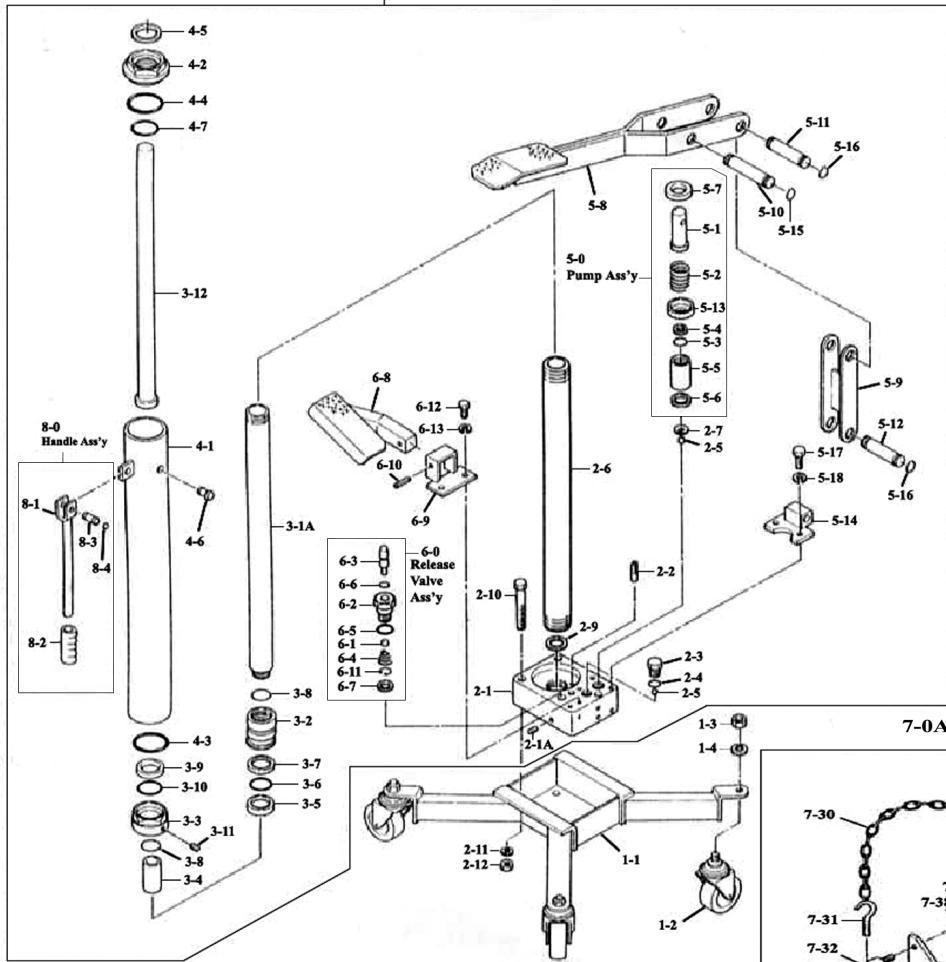
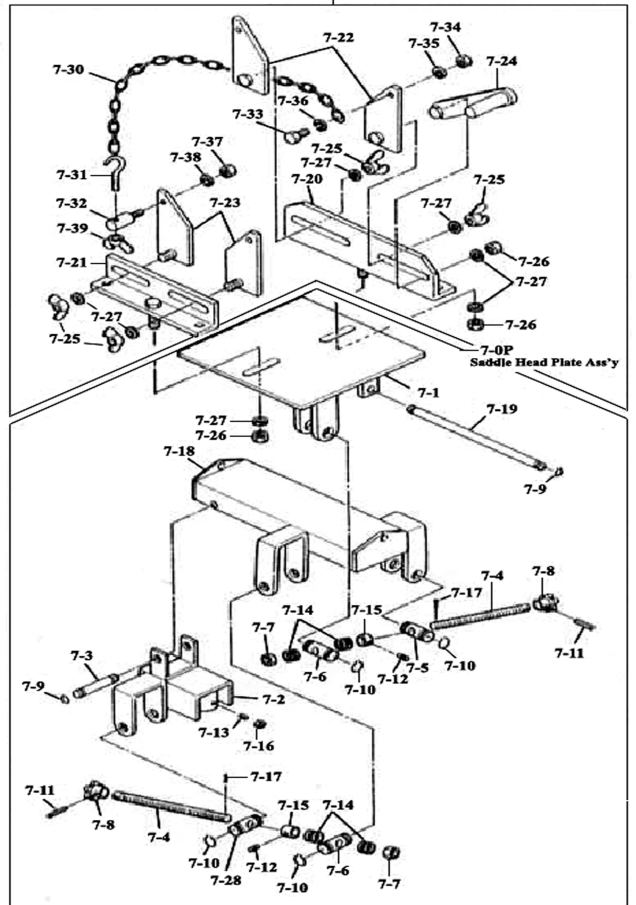


50-0 Hydraulic Power Unit Ass'y



Issue: 1
Issue Date: 160408

7-0A Saddle Head Attachment Ass'y



NOTE: It is our policy to continually improve products and as such we reserve the right to alter data, specifications and component parts without prior notice.

IMPORTANT: No liability is accepted for incorrect use of product.

WARRANTY: Guarantee is 12 months from purchase date, proof of which will be required for any claim.

INFORMATION: For a copy of our latest catalogue and promotions call us on 01284 757525 and leave your full name and address, including postcode.

ITEM	PART NO	DESCRIPTION	ITEM	PART NO	DESCRIPTION
1-1	500GTA/1-1	CHASSIS	6-12	500GTA/6-12	HEX HEAD BOLT
1-2	500GTA/1-2	SWIVEL CASTOR	6-13	500GTA/6-13	SPRING WASHER
1-3	500GTA/1-3	HEX HEAD NUT	6-2	500GTA/6-2	RELEASE VALVE LOCK NUT
1-4	500GTA/1-4	SPRING WASHER	6-3	500GTA/6-3	THROTTLE
2-1	500GTA/2-1	OIL BOX	6-4	500GTA/6-4	SPRING
2-10	500GTA/2-10	BOLT	6-5*	500GTA/6-5	O-RING
2-11	500GTA/2-11	SPRING WASHER	6-6*	500GTA/6-6	O-RING
2-12	500GTA/2-12	HEX HEAD NUT	6-7*	500GTA/6-7	COPPER PACKING
2-1A	500GTA/2-1A	PLUG WITH HEX HEAD HOLE	6-8	500GTA/6-8	FOOT PEDAL
2-2	500GTA/2-2	OIL STRAINER	6-9	500GTA/6-9	PEDAL BRACKET
2-3	500GTA/2-3	BLIND BOLT	7-0A	500GTA/7-0A	SADDLE HEAD ATTACHMENT ASS'Y
2-4	500GTA/2-4	COPPER PACKING	7-1	500GTA/7-1	SADDLE HEAD
2-5	500GTA/2-5	STEEL BALL	7-10	500GTA/7-10	SNAP RING
2-6	500GTA/2-6	CYLINDER	7-11	500GTA/7-11	SPRING PIN
2-7	500GTA/2-7	LOCK WASHER	7-12	500GTA/7-12	SCREW
2-9	500GTA/2-9	COPPER PACKING	7-13	500GTA/7-13	SCREW
3-10*	500GTA/3-10	O-RING	7-14	500GTA/7-14	THRUST BEARING
3-11	500GTA/3-11	PLUG WITH HEX HEAD HOLE	7-15	500GTA/7-15	HANDLE COLLAR
3-12	500GTA/3-12	PISTON ROD (SMALL)	7-16	500GTA/7-16	HEX HEAD NUT
3-1A	500GTA/3-1A	PISTON ROD (LARGE)	7-17	500GTA/7-17	COTTER PIN
3-2	500GTA/3-2	PACKING STEP	7-18	500GTA/7-18	TILTING BASE
3-3	500GTA/3-3	GRAND NUT	7-19	500GTA/7-19	CONNECTING PIN (B)
3-4	500GTA/3-4	SLEEVE	7-2	500GTA/7-2	SADDLE HEAD PLATE
3-5*	500GTA/3-5	EXTRA WEARING	7-20	500GTA/7-20	SADDLE HEAD BRACKET (A)
3-6*	500GTA/3-6	O-RING	7-21	500GTA/7-21	SADDLE HEAD BRACKET (B)
3-7*	500GTA/3-7	BACK-UP RING	7-22	500GTA/7-22	SADDLE HEAD ATTACHMENT (A)
3-8*	500GTA/3-8	O-RING	7-23	500GTA/7-23	SADDLE HEAD ATTACHMENT (B)
3-9*	500GTA/3-9	OIL SEAL	7-24	500GTA/7-24	SADDLE HEAD ATTACHMENT (C)
4-1	500GTA/4-1	OIL TANK	7-25	500GTA/7-25	WING NUT
4-2	500GTA/4-2	TANK NUT	7-26	500GTA/7-26	HEX HEAD NUT
4-3*	500GTA/4-3	O-RING	7-27	500GTA/7-27	WASHER
4-4*	500GTA/4-4	O-RING	7-28	500GTA/7-28	FEMALE SCREW
4-5*	500GTA/4-5	OIL SEAL	7-3	500GTA/7-3	CONNECTING PIN
4-6	500GTA/4-6	OIL FIL CAP	7-30	500GTA/7-30	RING CHAIN
4-7*	500GTA/4-7	O-RING	7-31	500GTA/7-31	HOOK WITH SCREW
5-0	500GTA/5-0	PUMP ASSEMBLY	7-32	500GTA/7-32	HOOK PIN
5-1	500GTA/5-1	PLUNGER	7-33	500GTA/7-33	HEX HEAD BOLT
5-10	500GTA/5-10	PLUNGER PIN	7-34	500GTA/7-34	HEX HEAD NUT
5-11	500GTA/5-11	PIN A	7-35	500GTA/7-35	SPRING WASHER
5-12	500GTA/5-12	PIN B	7-36	500GTA/7-36	WASHER
5-13	500GTA/5-13	SPRING RETAINER (B)	7-37	500GTA/7-37	HEX HEAD NUT
5-14	500GTA/5-14	LINK BRACKET	7-38	500GTA/7-38	CHASSIS
5-15	500GTA/5-15	COTTER PIN	7-39	500GTA/7-39	WING NUT
5-16	500GTA/5-16	COTTER PIN	7-4	500GTA/7-4	SCREW
5-17	500GTA/5-17	HEX HEAD BOLT	7-5	500GTA/7-5	FEMALE SCREW
5-18	500GTA/5-18	SPRING WASHER	7-6	500GTA/7-6	PIN A
5-2	500GTA/5-2	SPRING	7-7	500GTA/7-7	HEX HEAD NUT
5-3*	500GTA/5-3	O-RING	7-8	500GTA/7-8	GRIP
5-4*	500GTA/5-4	OIL SEAL	7-9	500GTA/7-9	SNAP RING
5-5	500GTA/5-5	PUMP CYLINDER	7-0P	500GTA/7-0P	SADDLE HEAD PLATE ASS'Y
5-6	500GTA/5-6	COPPER PACKING	8-0	500GTA/8-0	HANDLE ASSEMBLY
5-7	500GTA/5-7	SPRING RETAINER	8-1	500GTA/8-1	PUMP PLUNGER
5-8	500GTA/5-8	FOOT PEDAL FOR LIFTING	8-2	500GTA/8-2	HANDLE GRIP
5-9	500GTA/5-9	LINK	8-3	500GTA/8-3	HANDLE PIN
50-0	500GTA/50-0	HYDRAULIC POWER UNIT ASS'Y	8-4	500GTA/8-4	SNAP RING
6-0	500GTA/6-0	RELEASE VALVE ASS'Y		500GTA/RK	REPAIR KIT (items marked '*' in kit)
6-1	500GTA/6-1	STEEL BALL			
6-10	500GTA/6-10	SPRING PIN			
6-11	500GTA/6-11	SNAP RING			

NOTE: It is our policy to continually improve products and as such we reserve the right to alter data, specifications and component parts without prior notice.

IMPORTANT: No liability is accepted for incorrect use of product.

WARRANTY: Guarantee is 12 months from purchase date, proof of which will be required for any claim.

INFORMATION: For a copy of our latest catalogue and promotions call us on 01284 757525 and leave your full name and address, including postcode.