

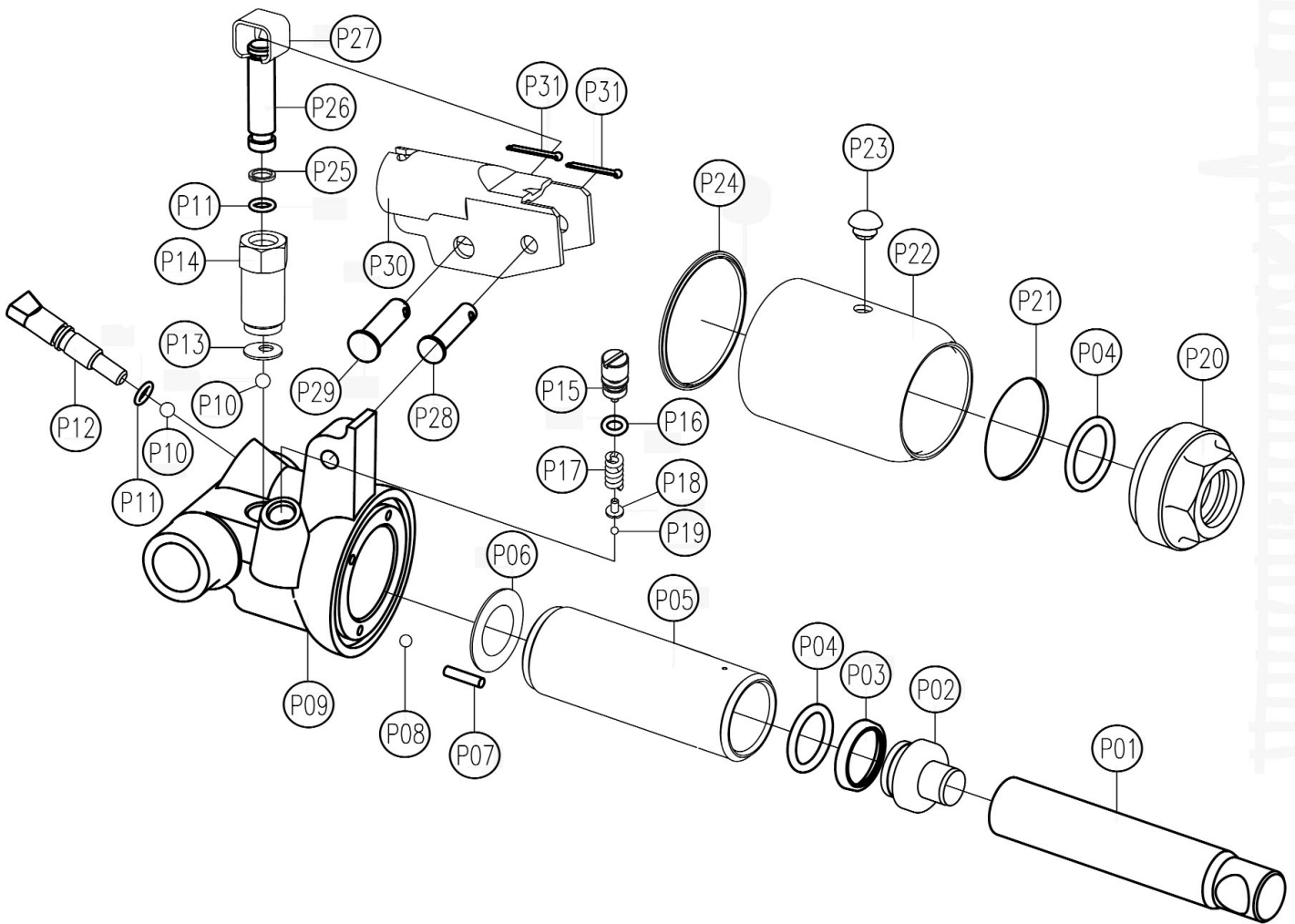
Item	Part No.	Description
1	1090CX.01	HAND GRIP
2	1090CX.02	HANDLE
3	1090CX.03	ANCHOR BOLT M12X128
4	1090CX.04	SPINDLE, SIDE MEMBER
5	1090CX.05	SPINDLE, LIFTING ARM
6	1090CX.06	RETAINING RING
7	1090CX.07	RADIUS LINK
8	1090CX.08	COVER PLATE
9	1090CX.09	LIFTING ARM
10	1090CX.10	CARRYING HANDLE
11	1090CX.11	RETAINING RING
12	1090CX.12	PIN (2x20)
13	1090CX.13	SADDLE
14	1090CX.14	SADDLE PIN
15	1090CX.15	SIDE MEMBER (R/H)
16	1090CX.16	WASHER
17	1090CX.17	WASHER
18	SN12.S	STEEL NUT M12 ZINC DIN934(SINGLE)
19	1090CX.19	TORSION SPRING BOLT
20	1090CX.20	TORSION SPRING BOLT

Item	Part No.	Description
21	1090CX.21	SADDLE ASS'Y
22	1090CX.22	ABS COVER, FRONT WHEEL
23	SN12.S	STEEL NUT M12 ZINC DIN934(SINGLE)
24	1090CX.24	WASHER
25	1090CX.25	SPACER
26	1090CX.26	WHEEL,FRONT FIXED (66x24x35)
27	1090CX.27	PIN, MOUNT SADDLE
28	1090CX.28	SPINDLE, FRONT WHEEL
29	1090CX.29	CROSS HEAD PIN
30	1050CX.V3-24	WHEEL,BLACK CASTOR (40x9x17x51)
31	1050CX/20	FORK, CASTOR WHEEL
32	1090CX.32	SPINDLE, CASTOR WHEEL
33	1090CX.33	BOLT M8x25
34	1090CX.34	PLASTIC BEARING RACE
35	1090CX.35	WASHER
36	SN8.S	STEEL NUT M8 ZINC DIN934 (SINGLE)
37	1090CX.37	SIDE MEMBER (L/H)
38	1090CX.38	RETURN SPRING
39	1090CX.39	HYDRAULIC UNIT ASS'Y

**NOTE:** It is our policy to continually improve products and as such we reserve the right to alter data, specifications and component parts without prior notice.

**IMPORTANT:** No liability is accepted for incorrect use of product.

**WARRANTY:** Guarantee is 12 months from purchase date, proof of which will be required for any claim.



Item	Part No.	Description
P1	1090CX.39-P01	PISTON ROD
P2	1090CX.39-P02	PLUNGER
P3	1090CX.39-P03	BOWL WASHER
P4	1090CX.39-P04	O-RING
P5	1090CX.39-P05	CYLINDER
P6	1090CX.39-P06	STEEL WASHER
P7	1090CX.39-P07	FILTER OIL TUBE
P8	SB-6.4	STEEL BALL 6.4mm
P9	1090CX.39-P09	CYLINDER BASE
P10	SB-6.0	STEEL BALL 6.0mm
P11	1090CX.39-P11	O-RING
P12	1090CX.39-P12	RELEASE VALVE
P13	1090CX.39-P13	SCREEN, WASHER
P14	1090CX.39-P14	PUMP CYLINDER
P15	1090CX.39-P15	OVERLOAD VALVE ADJUSTING ROD
P16	1090CX.39-P16	O-RING

Item	Part No.	Description
P17	1090CX.39-P17	SAFETY VALVE SPRING
P18	1090CX.39-P18	SPRING BASE
P19	SB-3.0	STEEL BALL 3.0mm
P20	1090CX.39-P20	TOP CUP
P21	1090CX.39-P21	O-RING
P22	1090CX.39-P22	RESERVOIR
P23	1090CX.39-P23	OIL FILLER PLUG
P24	1090CX.39-P24	BACK-UP RING
P25	1090CX.39-P25	RETAINING RING
P26	1090CX.39-P26	PUMP CYLINDER
P27	1090CX.39-P27	HANDLE SOCKET
P28	1090CX.39-P28	PISTON PIN
P29	1090CX.39-P29	CONNECTOR PIN
P30	1090CX.39-P30	HANDLE SLEEVE
P31	1090CX.39-P31	PIN

**NOTE:** It is our policy to continually improve products and as such we reserve the right to alter data, specifications and component parts without prior notice.

**IMPORTANT:** No liability is accepted for incorrect use of product.

**WARRANTY:** Guarantee is 12 months from purchase date, proof of which will be required for any claim.