

Thank you for purchasing a Sealey product. Manufactured to a high standard this product will, if used according to these instructions and properly maintained, give you years of trouble free performance.

! IMPORTANT: PLEASE READ THESE INSTRUCTIONS CAREFULLY. NOTE THE SAFE OPERATIONAL REQUIREMENTS, WARNINGS AND CAUTIONS. USE THIS PRODUCT CORRECTLY AND WITH CARE FOR THE PURPOSE FOR WHICH IT IS INTENDED. FAILURE TO DO SO MAY CAUSE DAMAGE AND/OR PERSONAL INJURY AND WILL INVALIDATE THE WARRANTY. PLEASE KEEP INSTRUCTIONS SAFE FOR FUTURE USE.

1. SAFETY INSTRUCTIONS

- ✓ Familiarise yourself with the applications, limitations and hazards of the press.
- ✓ Maintain the press in good condition (use an authorised service agent).
- ✓ Replace or repair damaged parts. *Use recommended parts only. Unauthorised parts may be dangerous and will invalidate the warranty.*
- ✓ Keep the press clean for best and safest performance.
- ✓ Locate the press in a suitable work area, on a surface that is stable, level, dry, not slippery, and capable of sustaining the load. Keep area clean and tidy and free from unrelated materials, and ensure there is adequate lighting.
- ☐ **WARNING!** Always wear approved eye or face protection when operating the press.
- ✓ Remove ill fitting clothing. Remove ties, watches, rings and other loose jewellery, and contain long hair.
- ✓ Keep hands and body clear of the work table when operating the press.
- ✓ Maintain correct balance and footing. Do not over reach. Ensure the floor is not slippery and wear non-slip shoes.
- ✓ Keep children and unauthorised persons away from the working area.
- x DO NOT use the press for a task it is not designed to perform.
- x DO NOT adjust or tamper with the safety valve, or make any modifications to the press.
- x DO NOT exceed the rated capacity of the press. Avoid applying excessive force, use the pressure gauge to determine the applied load.
- x DO NOT apply off-centre loads. Ensure that workpiece is centrally loaded and correctly secured before operating the press.
- x DO NOT allow the workpiece or the arbor plates to fall from the press work bench.
- x DO NOT get the press wet or use in damp or wet locations or areas where there is condensation.
- x DO NOT operate the press when you are tired or under the influence of alcohol, drugs or intoxicating medication.
- x DO NOT climb upon the press.
- x DO NOT use if bent, broken, cracked, leaking or otherwise damaged, or if press has been subjected to a shock load.
- x DO NOT operate the press if any parts are missing as this may cause failure and/or possible personal injury.
- x DO NOT use the press to compress a spring or any other item that could disengage and cause a hazard.
- x DO NOT stand directly in front of loaded press and never leave loaded press unattended.
- x DO NOT allow untrained persons to operate the press.
- ☐ **WARNING: DO NOT use brake fluid, or any fluid other than a good quality jack oil, such as SEALEY HYDRAULIC JACK OIL, as this may cause serious damage to the press and will invalidate the warranty!**
- ✓ When not in use, release pressure from the pump and clean the press. Stand or store the support blocks in a safe location.

2. INTRODUCTION & SPECIFICATION

2.1. GENERAL INFORMATION

Sealey heavy-duty floor hydraulic presses are ideal for a variety of workshop applications and are particularly suited to agricultural or industrial use. Jobs such as straightening, bending, folding, punching, pressing etc. are some of the tasks that may be accomplished with this press. Fitted with a pressure gauge and supplied with work table arbors. Detachable pump and ram allowing hydraulics to be used for other purposes when press is not in use.

▲ DANGER! For safety reasons, always ensure the workpiece and press tools are secured on the table and will not flex or suddenly "give way" causing danger to operator or the component.

2.2. SPECIFICATION

Capacity	30ton
Ram stroke	150mm
Max height - ram to table	965mm
Min height - ram to table	110mm
Table aperture	140mm
Work table width	540mm
Overall height	1920mm
Gauge included	Yes
Weight	128kg

3. ASSEMBLY

Unpack the product and check contents. If there are any damaged or missing parts contact your supplier immediately. Take care to ensure safety when removing main frame parts from packing as the unit is very heavy. We recommend that the press should be assembled by two people.

- 3.1. Use the assembly diagram overleaf as your guide. Lay all parts and assemblies out before beginning. The following procedure is recommended:
- 3.2. Attach one base leg (01) and lower cross member (08) to left post (09) using bolts (03), washers (04), lock washers (05) and nuts (06) to secure, then repeat with the other base leg (01), attaching it to right post (09) and the lower cross member (08). Make sure that the joining plates on the two posts are facing outwards.
- 3.3. Place the assembly in an upright position and attach two diagonal braces (02) to each base leg and post using bolts (03), washers (04), lock washers (05) and nuts (06).
- 3.4. Attach the upper cross beam (20) to the left and right posts (09) using bolts (16), washers (17), lock washers (18) and nuts (19). Place the bolt heads on the inside of the frame.
- 3.5. Bolt the ram (15) to the underside of the plate welded into the centre of the cross beam using four M10 hex socket cap bolts with washers (04), lock washers (05) and nuts (06). Ensure that the ram goes on the right way round so that the pressure gauge mounting tube protrudes through the hole in the plate.
- 3.6. Insert the nylon sealing ring (22) into the internal thread of the fitting on the mounting tube and screw the pressure gauge (23) into the fitting. Before tightening the fitting make sure that the gauge is facing in the best direction for viewing during operation.
- 3.7. Take note of which side the ram inlet port is facing and mount the pump assembly (26) onto the adjacent post using the upper two joining plates. Fix in position using four M10 x 20 bolts (25) washers (04) and lock washers (05). The pumping handle should be at the base of the pump.
- 3.8. Connect the hydraulic hose (24) to the ram inlet port.
- 3.9. To mount the work table first slide a frame pin (10) through each post ensuring they are both at the same height.

- 3.10. Lift the work table, turn it diagonally so that it can be placed in the space between the posts. Rotate the bed back to the horizontal so that the ends are either side of each post and lower the bed onto the two frame pins.
- 3.11. Insert the pumping handle (27) into the socket at the base of the pump (26).

4. INSTALLATION & OPERATING

4.1. INSTALLATION.

- 4.1.1. Securely fix the press to a flat, firm, level surface taking into account clearance for workpieces.
- 4.1.2. Before operating the press, purge the hydraulic system in order to eliminate any air that may have built up during transit. Open the release valve (R) by turning it anti-clockwise and pump the handle several times to eliminate any air in the system, then close release valve. **Note:** Should the system malfunction at any time, repeating this process may resolve the problem.

▲ **DANGER!** For safety reasons, always ensure the workpiece and press tools are secured on the table and will not flex or suddenly "give way" causing danger to operator or the component. Also ensure you have read and understood Section 1 safety instructions.

4.2. OPERATING INSTRUCTIONS.

- 4.2.1. Position the work table at the required operating height by inserting the support pins into the appropriate holes in the main frame.
- 4.2.2. Place the support blocks (12) onto work table (11), then place the workpiece onto the support blocks and align beneath the ram as required. Note: care must be taken to ensure a support block does not fall from the press work table. If necessary hold the configuration in position with clamps.
- 4.2.3. Close the release valve by turning it clockwise until it is firmly closed.
- 4.2.4. Pump the handle slowly until the ram is close to, or just touching, the workpiece. Before applying any pressure to the workpiece, recheck the alignment with the ram and ensure that the workpiece and press tools are supported in such a way that they cannot flex.
- 4.2.5. Pump the handle to apply load onto workpiece.
- 4.2.6. When work is done, stop pumping the handle. Slowly and carefully free load from workpiece by turning the release valve anti-clockwise in small increments. Note: Always keep the piston retracted after use to avoid ram corrosion.
- 4.2.7. Once ram has fully retracted, remove workpiece from work table.

5. MAINTENANCE

Note: Maintenance and repair must only be carried out by qualified person. Contact your Sealey dealer for details.

- 5.1. Periodically lubricate all joints and moving parts.
- 5.2. Always keep the press clean, dry, and protected from harsh conditions.

- 5.3. Before checking the oil level make sure the ram is fully retracted. Remove the oil filler plug (hex) (F) from the top of the pump. The oil level should be just below the bottom of the filler hole. If it needs filling, use only Sealey hydraulic jack oil. (DO NOT use brake fluid. Contact your local Sealey dealer for details). Replace oil filler nut and purge system of air (see 4.1.2.).
- 5.4. When replacing the hydraulic oil, ensure the piston is fully retracted.
- 5.5. If press efficiency begins to drop, purge the system to eliminate any air from the hydraulic system (see 4.1.2.).
- 5.6. When not in use, store the press in a dry, childproof location with the ram and piston fully retracted.

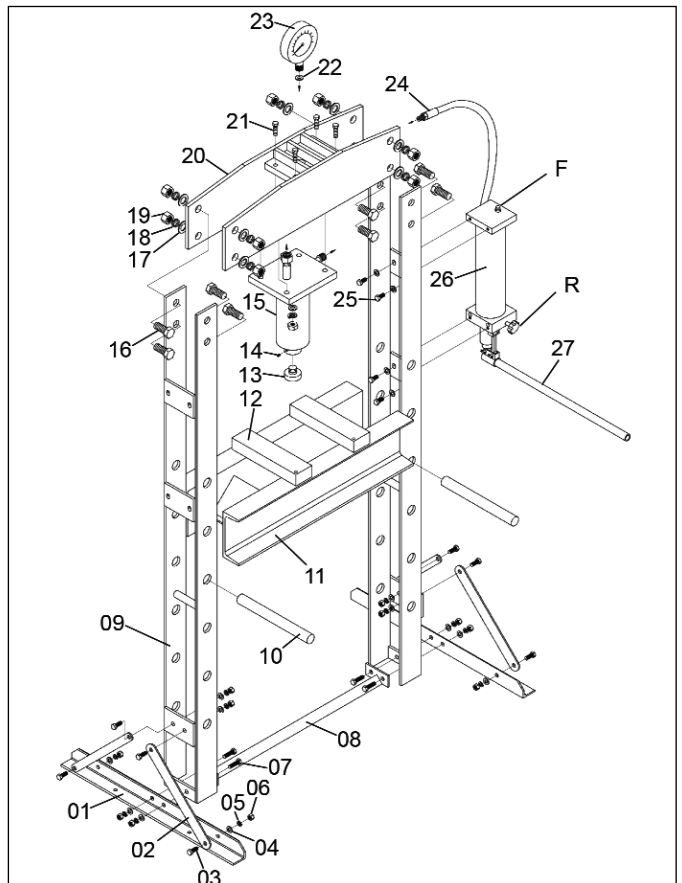
IMPORTANT: NO RESPONSIBILITY IS ACCEPTED FOR INCORRECT USE OF THE MACHINE.

Hydraulic products are only repaired by local service agents. We have service/repair agents in all parts of the UK.

DO NOT RETURN PRODUCT TO US. Please telephone us on 01284 757500 to obtain the address and phone number of your local agent. If product is under guarantee please contact your dealer.

De-commissioning Product

Should the press become completely unserviceable and require disposal, draw off the hydraulic oil into an approved container and dispose of the product and the hydraulic oil according to local regulations.



Declaration of Conformity We, the sole importer into the UK, declare that the product listed below is in conformity with the following standards and directives.

**30 Ton Hydraulic Floor Press
Model: YK30F**
98/37/EC Machinery Directive
93/68/EEC CE Marking Directive



The construction file for this product is held by the Manufacturer and may be inspected, by a national authority, upon request to Jack Sealey Ltd.

Signed by Mark Sweetman.

14th June 2007

For Jack Sealey Ltd. Sole importer into the UK of Sealey Quality Machinery

NOTE: It is our policy to continually improve products and as such we reserve the right to alter data, specifications and component parts without prior notice.

IMPORTANT: No liability is accepted for incorrect use of this product.

WARRANTY: Guarantee is 12 months from purchase date, proof of which will be required for any claim.

INFORMATION: For a copy of our catalogue and latest promotions call us on 01284 757525 and leave your full name, address and postcode.



Sole UK Distributor
Sealey Group,
Bury St. Edmunds, Suffolk.



01284 757500

01284 703534



www.sealey.co.uk

sales@sealey.co.uk