



# INSTRUCTIONS FOR: 20 TON AIR/ HYDRAULIC FLOOR PRESS MODEL : YK20FAH

Thank you for purchasing a Sealey product. Manufactured to a high standard this product will, if used according to these instructions and properly maintained, give you years of trouble free performance.



**IMPORTANT: PLEASE READ THESE INSTRUCTIONS CAREFULLY. NOTE THE SAFE OPERATIONAL REQUIREMENTS, WARNINGS AND CAUTIONS. USE THIS PRODUCT CORRECTLY AND WITH CARE FOR THE PURPOSE FOR WHICH IT IS INTENDED. FAILURE TO DO SO MAY CAUSE DAMAGE AND/OR PERSONAL INJURY AND WILL INVALIDATE THE WARRANTY. PLEASE KEEP INSTRUCTIONS SAFE FOR FUTURE USE.**

## 1. SAFETY INSTRUCTIONS

### SAFETY OF PERSONNEL

- WARNING!** Wear ANSI approved impact safety goggles or full-face impact safety shield and heavy-duty work gloves when operating the press.
- ✓ Remove ill fitting clothing. Remove ties, watches, rings, other loose jewellery and contain long hair.
- ✓ Keep hands and body clear of the work table when operating the press.
- ✓ Maintain correct balance and footing. **DO NOT** over reach. Ensure the floor is not slippery and wear non-slip shoes.
- ✗ **DO NOT** climb upon the press.
- ✗ **DO NOT** allow untrained persons to operate the press.
- ✗ **DO NOT** operate the press when you are tired or under the influence of alcohol, drugs or intoxicating medication.
- ✓ Keep children and unauthorised persons away from the working area.

### ENVIRONMENTAL SAFETY

- ✓ Locate the press in a suitable work area, on a surface that is stable, level, dry, not slippery and capable of sustaining the load.
- ✓ Keep area clean, tidy, free from unrelated materials and ensure there is adequate lighting.
- ✗ **DO NOT** get the press wet or use in damp or wet locations or areas where there is condensation.

### OPERATIONAL SAFETY

- ✓ Familiarise yourself with the applications, limitations and hazards of the press.
- ✓ Check to ensure that all applicable bolts and nuts are firmly tightened.
- ✗ **DO NOT** use the press for a task it is not designed to perform.
- ✗ **DO NOT** use press if bent, broken, cracked, leaking or otherwise damaged, or if press has been subjected to a shock load.
- ✗ **DO NOT** operate the press if any parts are missing as this may cause failure and/or possible personal injury.
- ✗ **DO NOT** adjust or tamper with the safety valve, or make any modifications to the press.
- ✗ **DO NOT** stand directly in front of loaded press and never leave loaded press unattended.
- ✗ **DO NOT** exceed the rated capacity of the press. Avoid applying excessive force, use the pressure gauge to determine the applied load.
- ✗ **DO NOT** apply off-centre loads. Ensure that workpiece is centrally loaded and correctly secured before operating the press.
- ✗ **DO NOT** allow the workpiece or the arbor plates to fall from the press table.
- ✗ **DO NOT** use the press to compress a spring or any other item that could disengage and cause a potential hazard.

### MAINTENANCE FACTORS

- ✓ When not in use, release pressure from the pump and clean the press. Stand or store the arbors in a safe location.
- ✓ Maintain the press in good condition (use an authorised service agent).
- ✓ Replace or repair damaged parts. *Use recommended parts only. Unauthorised parts may be dangerous and will invalidate the warranty.*
- ✓ Keep the press clean for best and safest performance.
- WARNING: Use SEALEY HYDRAULIC JACK OIL only. DO NOT use brake fluid, or any other fluid as this may cause serious damage to the press and will invalidate the warranty!**

## 2. INTRODUCTION & SPECIFICATION

2.1. Steel frame construction with integrally mounted air motor powering hydraulic pump unit. Sliding hydraulic ram assembly giving 400mm of lateral travel for off-centre pressing applications. Frame head fitted with ram pressure gauge. Supplied with flat pressing plate/V-blocks.

▲ **DANGER!** *This model is purpose designed to withstand greater loads than the hydraulic unit can develop. For safety reasons, always ensure the workpiece and press tools are secured on the table and will not flex or suddenly "give way" causing danger to operator or the component.*

### 2.2. SPECIFICATION

Capacity . . . . . 20ton  
 Ram stroke . . . . . 190mm  
 Max height - ram to table . . . . . 1040mm  
 Min height - ram to table . . . . . 75mm  
 Table aperture . . . . . 105mm  
 Work table width . . . . . 550mm

Overall height . . . . . 1810mm  
 Gauge included . . . . . Yes  
 Weight . . . . . 92kg  
 Working Pressure . . . . . 120-200psi  
 Air Consumption . . . . . 3.53cfm

## 3. ASSEMBLY

Use the exploded drawing as your guide to assemble the press. Lay all parts and assemblies out in front of you before beginning. The following procedure is recommended:

- 3.1 Attach one base section (21) to left post (20) and lower cross member (26) using bolts (25), washers (22), lock washers (23) and nuts (24). Attach two diagonal braces (60) between the post and base section using bolts (25), washers (22), lock washers (23) and nuts (24).
- 3.2 Attach the other base section (21) and the right post (20) to the lower cross member (26). Attach two diagonal braces (60) between the right post and base section using bolts (25), washers (22), lock washers (23) and nuts (24).
- 3.3 Put the press frame in an upright position, attach one upper crossbeam (10) to left and right posts (20) using bolts (9), washers (13), lock washers (12) and nuts (11).
- 3.4 Hook the under plate (7) onto the first cross beam and slide the other cross beam sideways through the other hooks until it is in position in front of the posts. Attach to the posts with bolts (9), washers (13), lock washers (12) and nuts (11).

- 3.5 Screw the upper round nut (6) onto the ram (3), insert the ram into the hole in the under plate (7), then screw the under round nut (8) onto the ram and attach the grooved saddle (5) to the ram.
- 3.6 Place the two halves of the press bed frame (18) back to back. Move them apart until the space between them is the same as the length of the four spacers (28). Align each spacer with the holes in the bed halves and insert a bolt (27) through both frames and the spacer. Secure the four bolts by using the washers (14), lock washers (15) and nuts (16).
- 3.7 Insert bed frame pins (19) into the holes in the posts at the same level. Hold the assembled bed frame diagonally between the posts. Turn it horizontal so that the ends are in contact with the posts and lower it onto the pins.
- 3.8 Attach the pump and air motor assemblies to the right post using bolts (29) and washers (14). Ensure that the air motor is below the pump. Insert the jack handle (48) into the handle bracket (38).
- 3.9 Connect the hydraulic hose fitting (57) to the connection nut (58) and assemble the pressure gauge (1) to the pressure gauge connection nut (59) which is on the top of the ram (3).
- 3.10 Tighten all bolts and nuts.

## 4. INSTALLATION & OPERATING

### 4.1. INSTALLATION.

- 4.1.1. Securely attach the press to a flat, firm, level surface taking into account clearance for workpieces.
- 4.1.2. Before first use of this product, pour a teaspoon of good quality, air tool lubricant into the air supply inlet of the lift control valve, connect to air supply and operate for 3 seconds to evenly distribute lubricant.
- 4.1.3. Purge away air from the hydraulic system.

**Manual operation:** open the release valve (41) by turning it counterclockwise. Pump several full strokes to eliminate any air in the system.

**Air operating system:** open the release valve (41) by turning it counterclockwise. Connect the air inlet fitting (39) into the air supply hose lock fitting, then turn on the air valve (40) letting the pump work for several times to eliminate any air in the system.

- ▲ **DANGER!** *This model is purpose designed to withstand greater loads than the hydraulic units can develop. For safety reasons, always ensure the workpiece and press tools are secured on the table and will not flex or suddenly "give way" causing danger to operator or the component. Also ensure you have read and understood Section 1 safety instructions.*

### 4.2. OPERATING INSTRUCTIONS.

- 4.2.1. Position the table at the required operating height by inserting the support pins into the appropriate holes in the main frame.
- 4.2.2. Place the arbor plate (17) on press bed frame/table (18), then place workpiece onto the arbor plate and align beneath the ram as required. Note: care must be taken to ensure an arbor does not fall from the press work table. If necessary hold the configuration in position with clamps.
- 4.2.3. Close the release valve (41) by turning it clockwise until it is firmly closed.
- 4.2.4. Connect the air inlet fitting into the workshop air supply hose lock fitting, turn on the air valve (40) to let the pump work until serrated saddle (5) nears workpiece, then turn off the air valve. When air source is unavailable, pump the handle (48) until serrated saddle nears workpiece.
- 4.2.5. Align workpiece and ram to ensure center-loading. Before applying any pressure to the workpiece, recheck the alignment with the ram and ensure that the workpiece and press tools are supported in such a way that they cannot flex.
- 4.2.6. Turn on the air valve or pump the handle to apply load onto workpiece.
- 4.2.7. When work is done, turn off the air valve (or stop pumping handle), slowly and carefully remove load from workpiece by turning the release valve counterclockwise in small increments.
- 4.2.8. Once ram has fully retracted, remove workpiece from the press bed frame.
- 4.2.9. Disconnect the air inlet fitting from the air source.

## 5. MAINTENANCE

**Note:** Maintenance and repair must only be carried out by qualified person. Contact your Sealey dealer for details.

- 5.1. Periodically lubricate all joints and moving parts.
- 5.2. Always keep the press clean, dry and protected from harsh conditions.
- 5.3. To check hydraulic oil level remove the oil filler nut (55) from the pump. If it needs filling, use only Sealey hydraulic jack oil. **(DO NOT use brake fluid.** Contact your local Sealey dealer for details). Replace oil filler nut and purge system of air (see 4.1.3.).
- 5.4. When replacing the hydraulic oil, ensure the piston is fully retracted.
- 5.5. If press efficiency begins to drop, purge the system to eliminate any air from the hydraulic system (see 4.1.3.).
- 5.6. When not in use, store the press in a dry, childproof location with the ram and piston fully retracted.

### **IMPORTANT: NO RESPONSIBILITY IS ACCEPTED FOR INCORRECT USE OF THE MACHINE.**

Hydraulic products are only repaired by local service agents. We have service/repair agents in all parts of the UK.

**DO NOT RETURN PRODUCT TO US.** Please telephone us on 01284 757500 to obtain the address and phone number of your local agent. If product is under guarantee please contact your dealer.

### **De-commissioning Product**

Should the product become completely unserviceable and require disposal, draw off the hydraulic oil into an approved container and dispose of the product and the hydraulic oil according to local regulations.

**Declaration of Conformity** We, the sole importer into the UK, declare that the product listed below is in conformity with the following standards and directives.

**20 Ton Air/Hydraulic Floor Press**  
**Model: YK20FAH**  
 2006/42/EC Machinery Directive  
 93/68/EEC CE Marking Directive



The construction file for this product is held by the Manufacturer and may be inspected, by a national authority upon request to Jack Sealey Ltd.

Signed by Mark Sweetman.

20th June 2008

For Jack Sealey Ltd. Sole importer into the UK of Sealey Quality Machinery



Sole UK Distributor  
 Sealey Group,  
 Bury St. Edmunds, Suffolk.



01284 757500



01284 703534

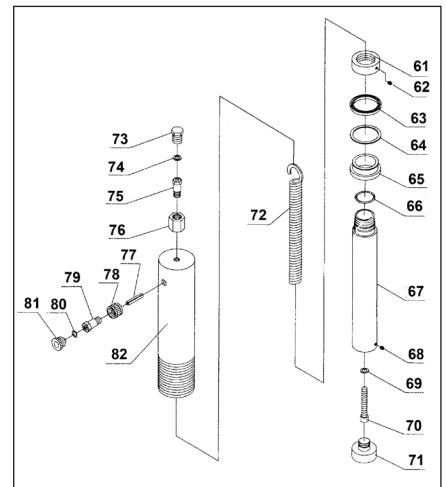
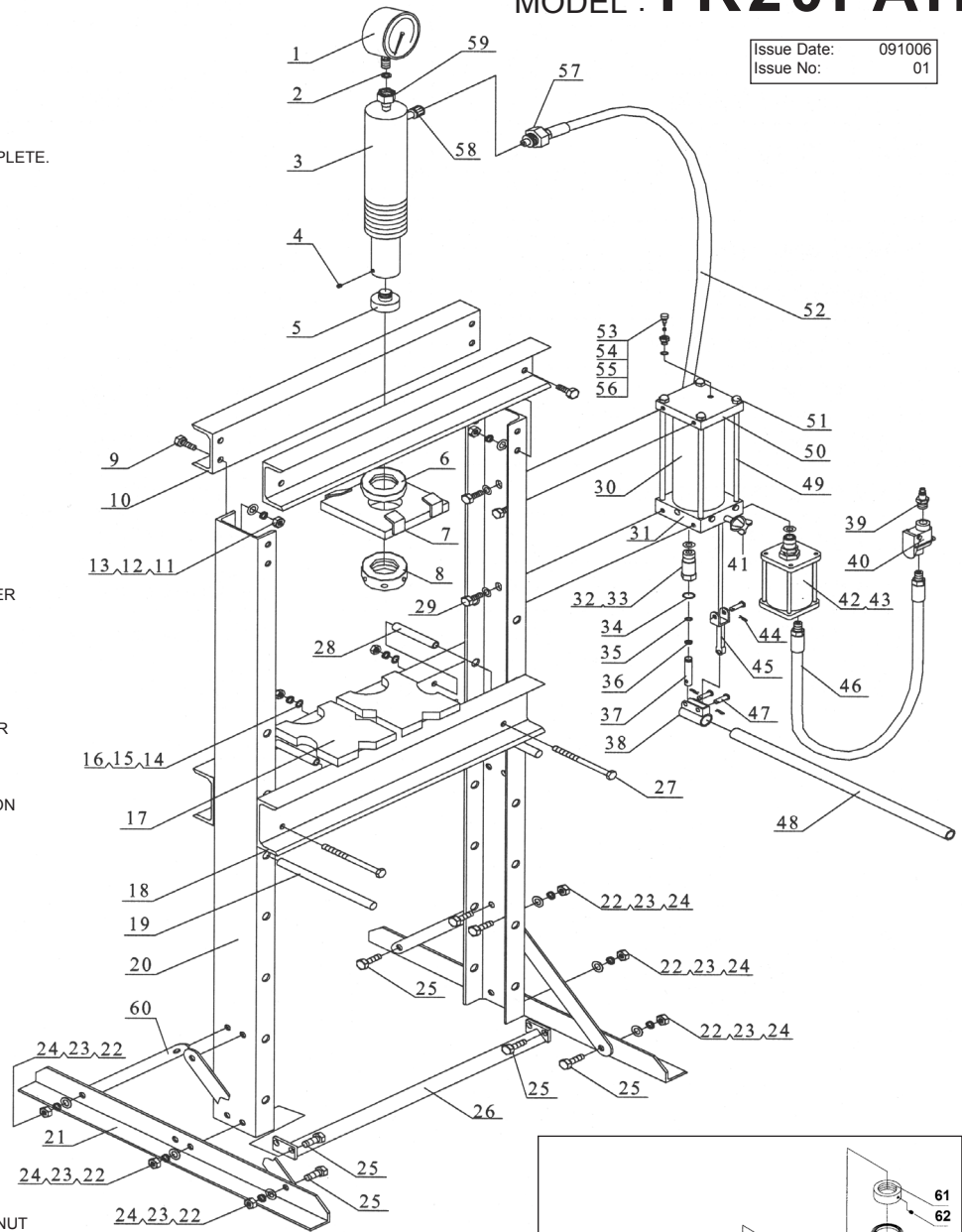


[www.sealey.co.uk](http://www.sealey.co.uk)



[sales@sealey.co.uk](mailto:sales@sealey.co.uk)

ITEM	PART NO	DESCRIPTION
1	YK20FAH.01	GAUGE
2	YK20FAH.02	NYLON RING
3	YK20FAH.RC	HYDRAULIC RAM COMPLETE.
4	YK20FAH.04	LOCK NUT M6
5	YK20FAH.05	SERRATED SADDLE
6	YK20FAH.06	ROUND NUT, UPPER
7	YK20FAH.07	PLATE
8	YK20FAH.08	ROUND NUT, LOWER
9	YK20FAH.09	BOLT M16x35
10	YK20FAH.10	CROSS BEAM, UPPER
11	YK20FAH.11	NUT M16
12	YK20FAH.12	LOCK WASHER 16mm
13	YK20FAH.13	WASHER 16mm
14	YK20FAH.14	WASHER 10mm
15	YK20FAH.15	LOCK WASHER 10mm
16	YK20FAH.16	NUT M10
17	YK20FAH.17	HEEL BLOCK
18	YK20FAH.18	PRESS BED FRAME
19	YK20FAH.19	FRAME PIN
20	YK20FAH.20	FRAME POST
21	YK20FAH.21	BASE SECTION
22	YK20FAH.22	WASHER 12mm
23	YK20FAH.23	LOCK WASHER 12mm
24	YK20FAH.24	NUT M12
25	YK20FAH.25	BOLT M10x15
26	YK20FAH.26	LOWER CROSS MEMBER
27	YK20FAH.27	BOLT M10x130
28	YK20FAH.28	BUSHING
29	YK20FAH.29	BOLT M10x15
30	YK20FAH.30	RESERVOIR
31	YK20FAH.31	PUMP ASSY
32	YK20FAH.32	RING
33	YK20FAH.33	SMALL PUMP CYLINDER
34	YK20FAH.34	RING
35	YK20FAH.35	O-RING
36	YK20FAH.36	NYLON RING
37	YK20FAH.37	SMALL PUMPING PISTON
38	YK20FAH.38	HANDLE BRACKET
39	YK20FAH.39	AIR INLET FILTER
40	YK20FAH.40	AIR VALVE
41	YK20FAH.41	RELEASE VALVE
42	YK20FAH.42	RING
43	YK20FAH.43	AIR MOTOR
44	YK20FAH.44	R-CLIP
45	YK20FAH.45	TIE ROD
46	YK20FAH.46	AIR HOSE
47	YK20FAH.47	PIN
48	YK20FAH.48	PUMPING HANDLE
49	YK20FAH.49	BOLT
50	YK20FAH.50	PLATE
51	YK20FAH.51	NUT M10
52	YK20FAH.52	HYDRAULIC HOSE
53	YK20FAH.53	SCREW
54	YK20FAH.54	SEALING RING
55	YK20FAH.55	OIL FILLER NUT
56	YK20FAH.56	NYLON RING
57	YK20FAH.57	HOSE FITTING
58	YK20FAH.58	CONNECTION NUT
59	YK20FAH.59	GAUGE CONNECTION NUT
60	YK20FAH.60	SUPPORT



ITEM	PART NO	DESCRIPTION
61	YK20FAH.R01	NUT
62	YK20FAH.R02	SCREW M6x6
63	YK20FAH.R03	SEALING RING
64	YK20FAH.R04	RING
65	YK20FAH.R05	BUSHING
66	YK20FAH.R06	O-RING
67	YK20FAH.R07	RAM
68	YK20FAH.R08	SCREW M6x10
69	YK20FAH.R09	SEALING WASHER
70	YK20FAH.R10	BOLT M10
71	YK20FAH.R11	TOE
72	YK20FAH.R12	SPRING
73	YK20FAH.R13	SCREW
74	YK20FAH.R14	NYLON RING
75	YK20FAH.R15	GAUGE COUPLER
76	YK20FAH.R16	GAUGE CONNECTION NUT
77	YK20FAH.R17	PIN
78	YK20FAH.R18	CONNECTION NUT
79	YK20FAH.R19	COUPLER
80	YK20FAH.R20	O-RING
81	YK20FAH.R21	DUST CAP
82	YK20FAH.R22	CYLINDER

**NOTE:** It is our policy to continually improve products and as such we reserve the right to alter data, specifications and component parts without prior notice.

**IMPORTANT:** No liability is accepted for incorrect use of this product.

**WARRANTY:** Guarantee is 12 months from purchase date, proof of which will be required for any claim.

**INFORMATION:** For a copy of our catalogue and latest promotions call us on 01284 757525 and leave your full name, address and postcode.