



IMPORTANT: PLEASE READ THESE INSTRUCTIONS CAREFULLY. NOTE THE SAFE OPERATIONAL REQUIREMENTS, WARNINGS & CAUTIONS. USE THE PRODUCT CORRECTLY AND WITH CARE FOR THE PURPOSE FOR WHICH IT IS INTENDED. FAILURE TO DO SO MAY CAUSE DAMAGE AND/OR PERSONAL INJURY AND WILL INVALIDATE THE WARRANTY. PLEASE KEEP INSTRUCTIONS SAFE FOR FUTURE USE.

1. CONTENTS

	Page No.
Section 2. General	1.
Section 2.1 Identification	1.
Section 2.2. Technical Data	1.
Section 3. Safety/Operational Instructions	2.
Section 4. Maintenance/Examination/Inspection	2.
Section 5. Assembly and storage	3.
Section 6. Owner's & Operator's Responsibilities	3.
Section 7. Declaration of Conformity	Separate File.
Section 8. Parts List/Diagram	4.

2. GENERAL

2.1 Identification

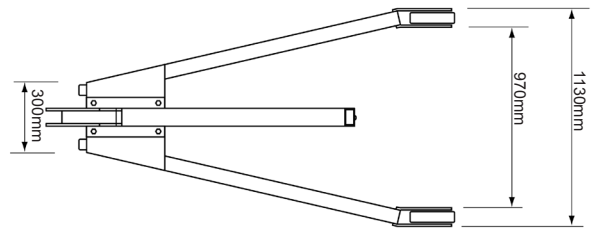
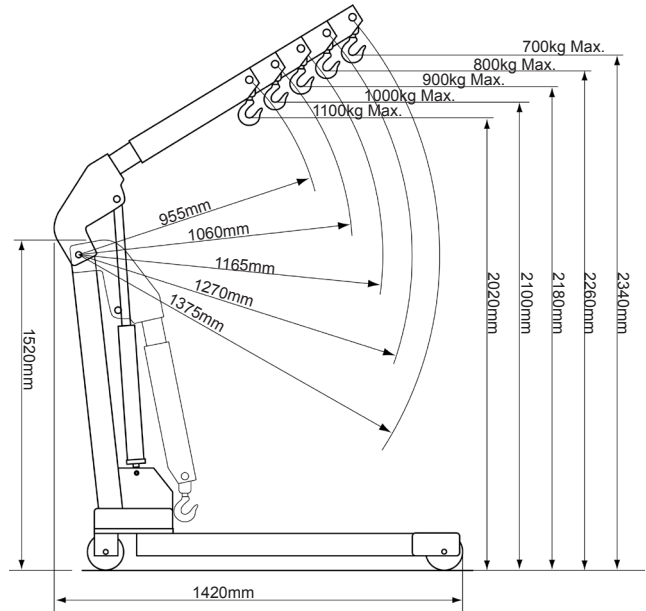
Supplier: Sealey Power Products,
Kempson Way,
Suffolk Business Park,
Bury St Edmunds,
Suffolk, IP32 7AR.

Model No: WF10

2.2 Technical Data

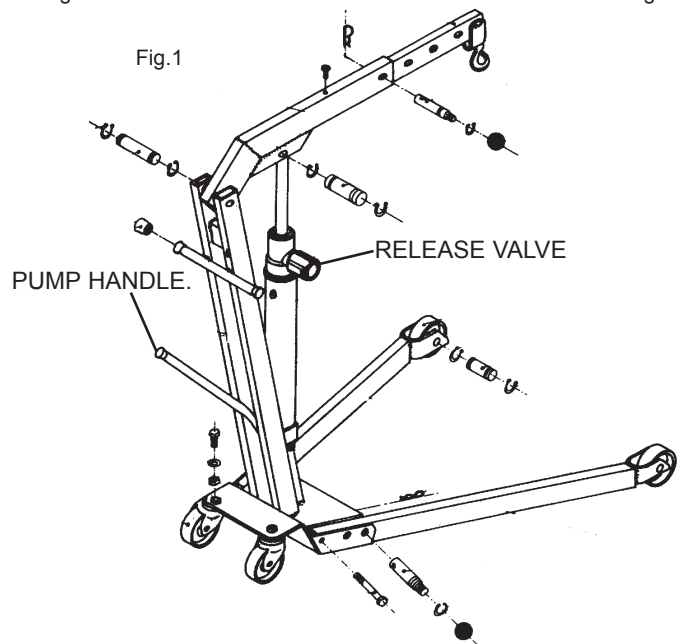
Rated Capacity

Safe Working Load (SWL) 10t (tested to 50% overload).
Working Load Limit (WLL) 10t (tested to 50% overload).
Lifting Cap. in Position 1: 1100kg
Lifting Cap. in Position 2: 1000kg
Lifting Cap. in Position 3: 900kg
Lifting Cap. in Position 4: 800kg
Lifting Cap. in Position 5: 700kg
Maximum Lift Ht. at Minimum Jib Extn: 2020mm
Maximum Lift Ht. at Maximum Jib Extn: 2340mm
Length of Jib Position 1: 955mm
Length of Jib Position 2: 1060mm
Length of Jib Position 3: 1165mm
Length of Jib Position 4: 1270mm
Length of Jib Position 5: 1375mm



Max. Lift @ min. Jib extension:	2020mm
Max. Lift @ max. Jib extension:	2340mm
Height (max) of frame:	125mm
Length (max) of frame:	1420mm
Width (max) of frame:	1130mm
Overall height: mm	1520mm
Width inside frame (max):	970mm
Distance between rear wheel centres:	300mm
Weight:	98kg

- Design Capability: Test Load 50% overload.
- For a description of in-service and out-of-service conditions see section 3 Safety, Section 4 Maintenance and Section 6.
- The crane is fitted with a bypass valve that will prevent the ram from over extending.
- For applications see Section 3 Safety.
- For control system, see Fig.1 for release valve and pump handle assy. Usage is explained in Section 3.2 Operation.
- For ground condition requirements, see Section 3 Safety.
- For information on parts and materials requiring specialised repair techniques see Section 4 Maintenance.



3. SAFETY/OPERATING INSTRUCTIONS

3.1 SAFETY

- ✓ **Keep** crane, lifting slings, support and beams in good working order and condition. Follow the inspection requirements as described in Section 4 page 2 Maintenance. *Take immediate action to repair or replace damaged parts by contacting your supplier. Ensure that all accessory lifting devices are suitably certified. If crane is damaged, remove from service immediately.*
- ✓ **Ensure the surface on which the crane is used is level, firm and capable of supporting the weight of the crane with maximum load - we recommend concrete. Never use the crane on tarmacadam or other soft surfaces.**
- ✓ **Ensure** the crane legs and arms are locked before use.
- ✓ **Keep** children and unauthorised persons away from the working area.
- ✓ **Keep** working area clean and tidy, free from unrelated materials and ensure that there is adequate lighting.
- ✓ **Ensure** that load does not exceed the maximum lifting capacity of the crane. Overloading the crane is dangerous. Where appropriate, use only the lifting points recommended by the manufacturer of the item to be lifted, e.g. vehicle engine.
- ✓ **Before** lifting the load ensure that the crane jib is in the lowest practical position, that there are no obstacles which may snag the load whilst it is being lifted and that the area above the jib is clear.
- ✓ **To** avoid injury, be fully aware of your own and other persons locations in relation to the lifting, and lowering, of the load.
- ✓ **Keep** a sound footing and balance, and ensure the floor is not slippery.
- ✓ **Ensure** jib extension locking bolt and nut are in position before lifting.
- ✓ **Ensure** the centre of gravity always remains inside the crane base.
- ✗ **DO NOT** harness the load at an angle or use any attachments not verified as fit for purpose.
- ✗ **DO NOT** allow the load to swing during lifting.
- ✗ **DO NOT** allow the load to drop suddenly. Lower load with care, ensuring that you are fully aware of the condition of the surface onto which the load is to be placed.
- ✗ **DO NOT** load crane beyond its rated capacity for each specified jib extension position as indicated in Section 2 page 1. The capacity of the crane reduces as the jib is extended.
- ✗ **DO NOT** position any part of your body beneath the load.
- ✗ **DO NOT** use the crane to move or transport a load other than for repositioning (see 3.2.f). The crane is a lifting device only.
- ✗ **DO NOT** apply any sideways pressure to any part of the crane during lifting or when a load is suspended.
- ✗ **DO NOT** attempt to adjust the safety valve, which has been set and sealed by the manufacturer.
- ✗ **DO NOT** use this product to perform a task for which it is not designed.
- ✗ **DO NOT** use whilst under the influence of drugs, alcohol or intoxicating medication.
- ✗ **DO NOT** climb on the crane.
- ✓ **When** not in use fold the crane down and store in a safe, dry, childproof area.
- ✓ **This crane is designed for lifting within a garage or workshop environment.**
- ☐ **WARNING!** Failure to heed safety and warning instructions may result in damage and/or personal injury and will invalidate the warranty.



NOTE: ENSURE YOU HAVE READ AND UNDERSTOOD THE SAFETY INSTRUCTIONS AT THE BEGINNING OF THIS SECTION BEFORE YOU OPERATE THE CRANE.

3.2 OPERATION. (Refer to Section 4.2 (a) regarding inspection before each and every use).

- a) Turn the release valve (Fig.1) fully clockwise.
- b) Pump the handle to raise the jib to the appropriate height at which the load may be secured.
- c) Connect the crane hook to the load using a suitable **certified** sling or support beam. Ensure you are aware of the load weight, and check that it is within the capacity of the crane (at the jib extension you are using) and the sling or support beam. When removing engines ensure you know the weight to be lifted. Use only the lifting points recommended by the vehicle manufacturer.
- d) Lift only from directly above the load. **WARNING! DO NOT LIFT THE LOAD AT AN ANGLE!**
- e) To lower load, position handle on release valve (Fig.1) at base of ram and turn **VERY SLOWLY anti-clockwise** avoiding any sudden movement. **WARNING!** Do not allow the load to drop suddenly.
- f) The crane is not a transportation device but may be used to reposition the load being worked on. To do so, lower load and jib with care, to the lowest possible point before attempting to move. Do not try to move crane in a sideways direction. The crane is not designed to support the load indefinitely. When you have repositioned the load, lower the load onto a secure and appropriate working base, being fully aware of your own and other persons locations in relation to the lowering load.
- g) When load has been secured, remove lifting sling, support beam etc. and place crane in a safe location with lifting beam fully lowered.

4. MAINTENANCE/EXAMINATION/INSPECTION

NOTE: The crane MUST be kept clean and dry and must be maintained in accordance with these instructions.

4.1. Lubrication.

- a) Oil all working parts monthly.
- b) The ram is filled with oil and should only require occasional topping up. For the occasional top up **DO NOT** use brake fluid, as this will damage the hydraulic seals. Proceed as follows:
 - a) Use only good quality hydraulic jack oil available from your supplier.
 - b) **DO NOT OVERFILL** as this will cause failure.
 - c) After filling with hydraulic oil, pump the crane up to full height and pour off any excess oil.

4.2. Inspection and Examination of Crane Before Use.

- a) Before each use of the crane you must perform an inspection for leaks, damage, loose or missing parts.
- b) The workshop crane must be examined immediately if it has been subject to an abnormal load or shock. It is recommended that such an examination is made by an authorised service agent.
- c) The owner and/or operator must be aware that repair of this equipment will require specialised knowledge and facilities. It is recommended that an annual examination of the workshop crane is made by an authorised service agent.
- d) Unauthorised parts may be dangerous and will invalidate the warranty.

Note! Please see the *Definition of 'inspection' and 'examination'* below.

Inspection:

Looking at the crane for defects and checking the operation of the controls, limiting and indicating devices without loading the crane. This is much more than a check but does not normally require any part of the crane to be dismantled other than removal or opening of covers or housings.

Examination:

Verification that the crane can safely continue in service including a functional test of all safety devices i.e. limiting, indicating equipment, brakes, clutches, safety valves etc to verify that they operate within the required tolerances. An examination is more thorough than an inspection.

5. ASSEMBLY/STORAGE INSTRUCTIONS

Your crane is delivered assembled but in a folded condition. Before using it is necessary to lay the folded crane on its 'back' on the floor and proceed as follows.

5.1 ASSEMBLY.

Unpack the product and check contents against the parts list in these instructions. Should there be any damaged or missing parts contact your supplier immediately. We recommend two people assemble the crane as follows:

- a) Lower the crane legs. Lock them in place with the pins and split pins.
- b) Rotate the assembled crane onto its wheels.
- c) Open the valve at top of ram by turning anti-clockwise and pump 10-20 times. This will purge any air that may have entered during transit.
- d) Pull crane jib up slightly, close valve and pump the handle. The jib will now raise. Pump the jib all the way up once and lower it again (this will check the oil level).
- e) Crane is now ready. Ensure that it is complete and not damaged. If you experience any problems contact your supplier immediately.

5.2 STORAGE.

- a) Always store the crane fully closed so that the jib is in lowest position and the ram is closed.
- b) To save space the legs may be folded into the upright position and secured in place using the Lock Pins.

6. OWNER'S & OPERATOR'S RESPONSIBILITIES

The owner and/or operator shall study these instructions and retain them for future use.

a) Understanding instructions and warnings.

The owner and/or operator shall understand the operating instructions and warnings before operating the crane. Warning information must be emphasised and understood. If the operator is not fluent in English, the product instructions and warnings must be read to, and discussed with, the operator in the operator's native language by the owner, making sure the operator understands the contents.

b) Damaged Cranes.

Any crane which appears to be damaged, badly worn, or operates abnormally **MUST BE REMOVED FROM SERVICE!** It is recommended that necessary repairs be made by an authorised service agent.

c) End of service.

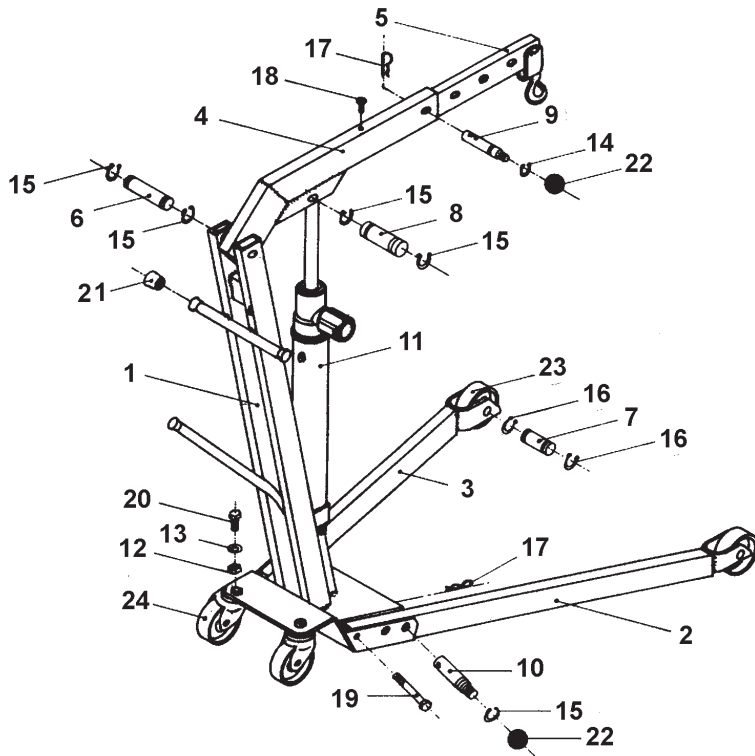
Through years of normal wear, the crane will eventually become unserviceable. When this happens ensure the hydraulic oil is drained off and disposed of in accordance with local authority regulations.



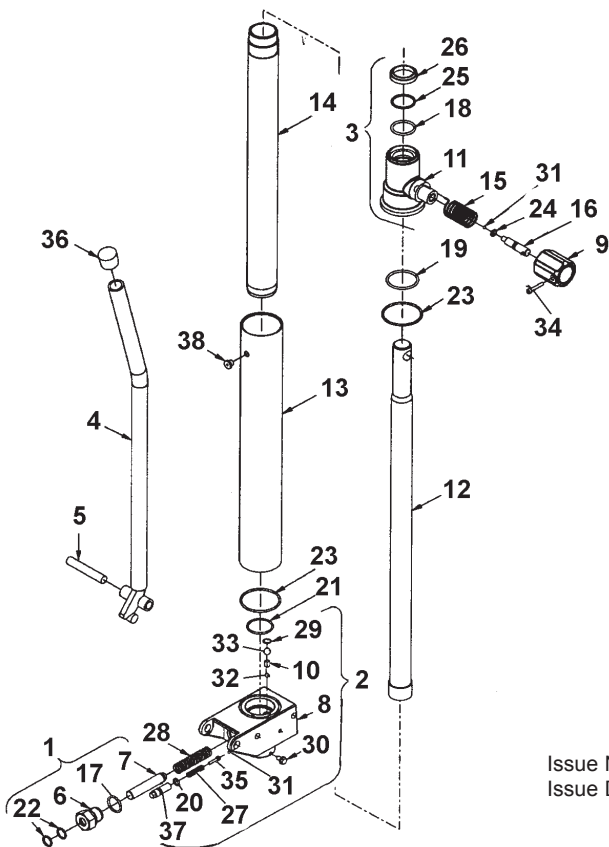
- WARNING!** *The warnings, cautions and instructions discussed in this manual cannot cover all possible conditions and situations that may occur. It must be understood that common sense and caution are factors which cannot be built into this product, but must be applied by the operator.*

Your crane is guaranteed for one year from the date of purchase. The Guarantee does not cover faults caused by incorrect use, lack of maintenance, accidental damage or damage caused to third parties through misuse. You are recommended to inform your insurers and check that adequate cover is in place. Warranty claims must be supported by a copy of the dated purchase receipt.

8. PARTS LIST/DIAGRAM



ITEM	PART NO.	DESCRIPTION
1	100/1701400	MAST
2	100/1700200	RIGHT LEG
3	100/1700300	LEFT LEG
4	100/1700400	MAIN JIB
5	100/1700500	EXTENSION JIB
6	100/1700600	AXLE FOR JIB/MAST
7	100/1600800	AXLE FOR WHEEL
8	100/1700700	AXLE FOR ARM/CYL.
9	100/1000600	SPIKE FOR ARM
10	100/5000300	SPIKE FOR LEG
11	100/9084500	PUMP COMPLETE
12	100/02005	NUT
13	100/02121	WASHER PLATE
14	100/02203	CIRCLIP
15	100/02204	CIRCLIP
16	100/02224	CIRCLIP
17	100/02239	LOCK SPLIT
18	100/02281	SCREW
19	100/02283	BOLT
20	100/02668	BOLT
21	100/02374	PLASTIC KNOB
22	100/02380	PLASTIC BALL
23	100/02443	WHEEL
24	100/02449	REVOLVING WHEEL COMP.



Issue No: 1
Issue Date: 140602

ITEM	PART NO.	DESCRIPTION
-	100/9084500	PUMP COMPLETE
1	100/9083100	PUMP PISTON COMPLETE
2	100/9083200	PUMP BLOCK COMPLETE
3	100/9083300	CYLINDER NUT COMPLETE
4	100/9083600	PUMP LEVER
5	100/9083700	AXLE FOR PUMP LEVER
6	100/9052700	PISTON GUIDE
7	100/9055700	PUMP PISTON
8	100/9060900	PUMP BLOCK
9	100/9061100	RELEASE HANDLE
10	100/9061200	VALVE WEIGHT
11	100/9061300	CYLINDER NUT
12	100/9062100	PISTON ROD
13	100/9062200	RESERVOIR
14	100/9062300	CYLINDER TUBE
15	100/9062400	SPRING
16	100/9062800	VALVE SPINDLE
17	100/01004	O-RING
18	100/01017	O-RING
19	100/01020	O-RING
20	100/01040	O-RING
21	100/01058	O-RING
22	100/01069	O-RING
23	100/01070	O-RING
24	100/01086	O-RING
25	100/01156	BACK-UP RING
26	100/01264	SCRAPER RING
27	100/02038	SPRING
28	100/02039	SPRING
29	100/02214	CIRCLIP
30	100/02281	SCREW
31	100/02290	BALL Ø4.5
32	100/02292	BALL Ø6.5
33	100/02295	BALL Ø11
34	100/02324	SCREW
35	100/02340	SCREW
36	100/02370	PLASTIC PLUG
37	100/02384	ADJUSTING SCREW
38	100/02448	FILLER PLUG
-	100/0903800	REPAIR KIT

NOTE: It is our policy to continually improve products and as such we reserve the right to alter data, specifications and component parts without prior notice.

IMPORTANT: No liability is accepted for incorrect use of this product.

WARRANTY: Guarantee is 12 months from purchase date, proof of which will be required for any claim.

INFORMATION: For a copy of our latest catalogue and promotions call us on 01284 757525 and leave your full name and address, including postcode.



Sole UK Distributor, Sealey Group,
Kempson Way, Suffolk Business Park,
Bury St. Edmunds, Suffolk,
IP32 7AR

01284 757500

www.sealey.co.uk

01284 703534

sales@sealey.co.uk