

Thank you for purchasing a Sealey Product. Manufactured to a high standard this product will, if used according to these instructions and properly maintained, give you years of trouble free performance.



IMPORTANT: PLEASE READ THESE INSTRUCTIONS CAREFULLY. NOTE THE SAFE OPERATIONAL REQUIREMENTS, WARNINGS AND CAUTIONS. USE THIS PRODUCT CORRECTLY AND WITH CARE FOR THE PURPOSE FOR WHICH IT IS INTENDED. FAILURE TO DO SO MAY CAUSE DAMAGE AND/OR PERSONAL INJURY AND WILL INVALIDATE THE WARRANTY. PLEASE KEEP INSTRUCTIONS SAFE FOR FUTURE USE.

1. SAFETY INSTRUCTIONS

1.1 GENERAL SAFETY

- X **DO NOT** use the borescope if dropped and/or damaged
- X **DO NOT** operate near live electrical wires.
- X **DO NOT** operate near moving parts such as pulleys, motors, gears or fans etc.
- X **DO NOT** bend the borescope shaft tighter than 13cm diameter.
- X **DO NOT** expose the borescope housing to water or other liquids.
- X **DO NOT** insert the borescope shaft into locations whose temperature is greater than 55°C.
- ✓ Maintain the borescope in good and clean condition for best and safest performance.
- ✓ A full range of personal safety equipment is available from your Sealey dealer.
- ✓ Wear suitable clothing to avoid snagging. Do not wear jewellery and tie back long hair.
- ✓ Account for all tools and parts being used and do not leave any in, or near, the engine.
- ✓ Be alert to your surrounding environment while using the borescope.
- ✓ Note the location of the object to be inspected and determine a route to it. Bend the borescope shaft to follow the route.

1.2 ELECTRICAL SAFETY FOR USE OF CHARGERS.

USE ONLY THE SUPPLIED CHARGER PLUG FOR CONNECTING THE LCD SCREEN TO THE POWER SUPPLY.

- **WARNING!** It is the user's responsibility to read, understand and comply with the following electrical instructions:
 You must ensure the risk of electric shock is minimised by the installation of appropriate safety devices.
 An RCCB (Residual Current Circuit Breaker) should be incorporated in the main distribution board. We also recommend that an RCD (Residual Current Device) is used with all electrical products, particularly portable equipment which is plugged into an electrical supply not protected by an RCCB.
 You must also read and understand the following instructions concerning electrical safety.
- 1.2.1. **The Electricity At Work Act 1989** requires all portable electrical appliances, if used on business premises, to be tested by a qualified electrician, using a Portable Appliance Tester (PAT), at least once a year.
- 1.2.2. **The Health & Safety at Work Act 1974** makes owners of electrical appliances responsible for the safe condition of the appliance and the safety of the appliance operator. If in any doubt about electrical safety, contact a qualified electrician.
- 1.2.3. **You must ensure that you:**

- ✓ Inspect the charger plug, cables and connectors for wear and damage to ensure items are safe before connecting to the mains power supply or 12V accessory socket. If worn or damaged **DO NOT** use.
- ✓ Uncoil the cable between charger and the LCD screen.
- X **DO NOT** pull the charger plugs from the mains socket or 12V accessory socket by the lead.
- **WARNING! DO NOT use any other type of charger with this product, other than the supplied mains or car charger. Failure to observe this warning could result in injury and or fire and will invalidate the warranty.**
- X **DO NOT** try to take the charger apart.
- X **DO NOT** use the charger plug to charge or power any other electrical item.
- X **DO NOT** get the charger wet, or use in wet, damp conditions (for indoor use only).

1.3 BATTERY SAFETY

- **WARNING! To reduce the risk of burns or fire:**
- X **DO NOT** attempt to open, disassemble, modify or service the battery pack.
- X **DO NOT** crush, puncture, short external contacts or dispose of in fire or water.
- X **DO NOT** expose to temperatures above 60°C (140°F).
- ✓ Replace only with the battery pack designated for this product.
- ✓ Recycle or dispose of used battery as stipulated by local regulation.
- ✓ If the electrolyte in the cells gets on your skin, thoroughly wash with soap and water. If it gets in your eyes, rinse thoroughly with cool water and seek immediate medical attention.

2. INTRODUCTION & SPECIFICATION

Versatile video borescope with Ø8.5mm x 1000mm semi-rigid probe. Detachable, wireless colour LCD display with crystal clear 90mm high resolution screen. Features on-screen horizontal/vertical flip features for use with side-view mirrors. CMOS camera with adjustable LED for fine control of light output and clear pictures. Suitable for internal inspection of cylinder head bores and vehicle compartments/components. Quickest and most cost effective solution, ideal for the inspection of engines, machinery, buildings and infrastructure. Supplied with AV cable for external viewing of image. Uses 4 x AA batteries supplied.

| | |
|-----------------------|------------------|
| Minimum Bend Diameter | 13cm |
| Probe Size | 8.5 x 1000mm |
| Screen Size | 90mm |
| Resolution | 640 x 480 pixels |
| Batteries | 4 x AA |
| Accessories | Mirrors - 45° |
| | Magnetic Pick Up |
| | Hook |
| | Video-out Cable |
| | Charging Adapter |

3. PREPARATION

3.1 Batteries

- 3.1.1 Remove the screw on the bottom of the borescope handle. (Fig.2). Slide across and remove the battery compartment cap then remove the AA battery holder.
- 3.1.2 Insert AA batteries ensuring correct polarity.
- 3.1.3 Reinsert the holder and replace the battery compartment cap. Secure with screw. (Fig.2).

3.2 Probe

- 3.2.1 Insert the probe (Fig.1.2) into the borescope body, ensure the tab on the probe aligns with the slot in the borescope. The probe will only connect one way.
- 3.2.2 With the probe pushed firmly in, screw the sleeve (Fig.1.3) on the main body, onto the probe to secure it in place.

3.3 Probe Attachments

- 3.3.1 There are three attachment for this borescope, a hook, a magnet and a 45° mirror (Fig.1.9/10/11).
- 3.3.2 Each attachment is connected the same way - by pushing onto the end of the probe until it 'clicks'.

3.4 LCD Screen

- 3.4.1 To charge, plug the AC adapter into the mains and then into the charging port. Fig.3.7.
- 3.4.2 When charging, the indicator LED (Fig.3.5) will illuminate RED. When fully charged the indicator LED (Fig.3.5) will illuminate GREEN.
- 3.4.3 When the battery is low the LED indicator light will flash GREEN.
- 3.4.3 The LCD screen can be used wireless (up to 10 metres) or can be attached to the rear of the borescope. Align the screen and borescope contacts (Fig.3.4) and slide downwards to secure. See Fig.4.

NOTE! When the LCD Screen is attached to the rear of the borescope only the power from the rechargeable lithium-ion battery in the screen is used, therefore prolonging the life of the AA batteries in the borescope.

Fig.1

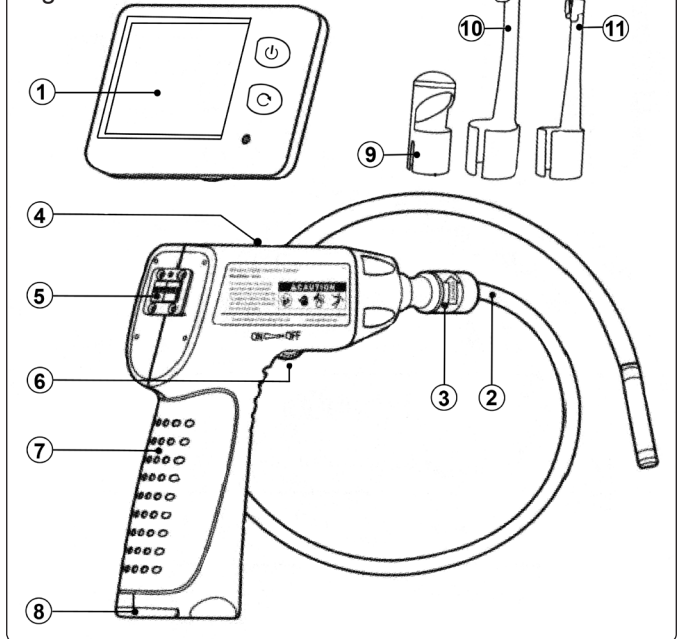
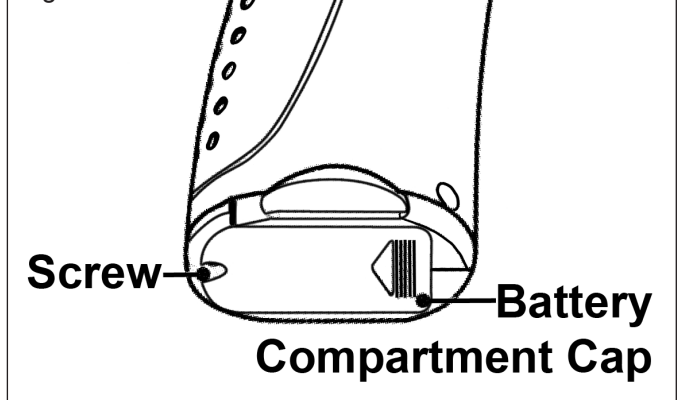


Fig.2



4. OPERATION

- X **DO NOT** use excessive force to insert or retrieve probe from the equipment or areas under inspection.
- X **DO NOT** use the probe to push against objects or to clear a path. This instrument is for remote viewing only.
- X **DO NOT** bend any part of the shaft tighter than a 13cm diameter.
- X **DO NOT** insert the probe and tip into locations where the temperature is greater than 55°C.
- X **DO NOT** vibrate, bang, or drop your borescope. It is not shock resistant.

4.1 Turning On/Off

- 4.1.1 Borescope - Hold the unit by the handle and roll the scroll switch to the 'On' position (Fig.1.6). The indicator light (Fig.1.4) will illuminate to show the borescope is 'On'.
- 4.1.2 LCD screen - Press and hold the On/Off button on the LCD screen (Fig.3.2). If the indicator light illuminates GREEN when the 'On' button is released the internal battery is in a low state of charge. See 3.4.

4.2 Light Adjustment

- 4.2.1 The light on the end of the probe can be adjusted. The On/Off switch (Fig.1.6) also controls the brightness of the LED light on the end of the probe, scroll the switch to find the desired level of brightness.

4.3 Image Rotate Function

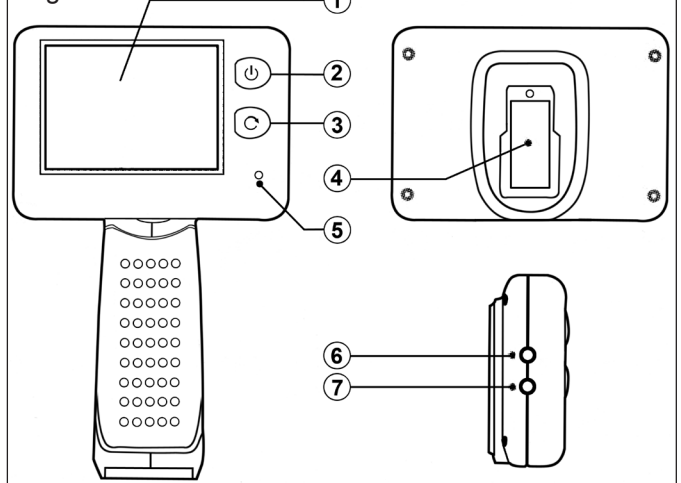
- 4.3.1 Press the 'Rotate' button (Fig.3.3) on the LCD screen to rotate the image, this is particularly useful when using the mirror attachment

4.4 Video Out Port

- 4.4.1 The borescope provides an external video signal via an RCA phono jack (Fig.3.6). This signal can be utilized by a compatible monitor or recording device. (AV Lead Included).

☐ **WARNING!** The handheld monitor unit is not water resistant. The shaft and tip are water resistant.

Fig.3



5. MAINTENANCE

5.1 Batteries

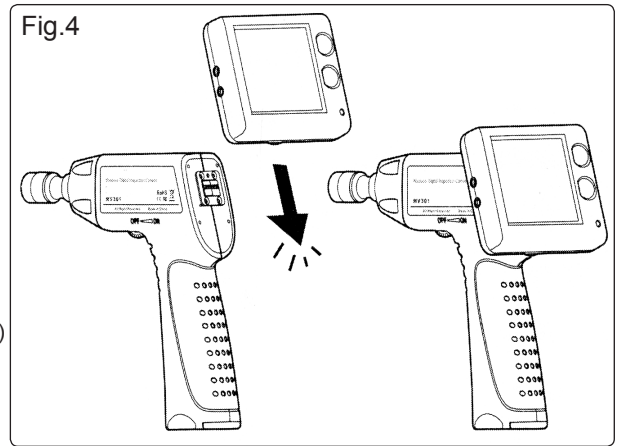
- 5.1.1 Remove the screw on the bottom of the borescope handle. (Fig.2). Slide across and remove the battery compartment cap then remove the AA battery holder.
- 5.1.2 Remove and replace AA batteries ensuring correct polarity.
- 5.1.3 Reinsert the holder and replace the battery compartment cap. Secure with screw. (Fig.2).

5.2 Cleaning and Storage

- 5.2.1 Wipe the probe tip, shaft and housing with a clean, soft cloth to remove residue and moisture.
- 5.2.2 Wash the probe tip and shaft with a cleaning liquid and rinse with water, then dry.
- 5.2.3 Gently clean the probe lens with a lens cleaner (such as isopropyl alcohol) and a cotton bud.

X DO NOT submerge the borescope in water - the borescope monitor is not water resistant.

NOTE: The borescope MUST be completely dry prior to returning it to the storage case.



Environmental Protection.



Recycle unwanted materials instead of disposing of them as waste.

All tools, accessories and packaging should be sorted, taken to a recycle centre and disposed of in a manner which is compatible with the environment.



When the product is no longer required, it must be disposed of in an environmentally protective way. Contact your local solid waste authority for recycling information.



Battery Removal.

- Refer to Section 5.1 for AA battery removal.
- LCD Lithium-ion battery - Remove the four screws on the back of the screen, separate the two half of the monitor. Unplug the battery connector and lever the battery off the foam mountings.

Dispose of batteries according to local authority guidelines.

Under the Waste Batteries and Accumulators Regulations 2009, Jack Sealey Ltd are required to inform potential purchasers of products containing batteries (as defined within these regulations), that they are registered with Valpak's registered compliance scheme. Jack Sealey Ltd's Batteries Producer Registration Number (BPRN) is BPRN00705

Parts support is available for this product. To obtain a parts listing and/or diagram, please log on to www.sealey.co.uk, email sales@sealey.co.uk or phone 01284 757500.

NOTE: It is our policy to continually improve products and as such we reserve the right to alter data, specifications and component parts without prior notice.

IMPORTANT: No liability is accepted for incorrect use of this product.

WARRANTY: Guarantee is 12 months from purchase date, proof of which will be required for any claim.

INFORMATION: For a copy of our latest catalogue and promotions call us on 01284 757525 and leave your full name and address, including postcode.



Sole UK Distributor, Sealey Group,
Kempson Way, Suffolk Business Park,
Bury St. Edmunds, Suffolk,
IP32 7AR

 01284 757500

 01284 703534



www.sealey.co.uk



sales@sealey.co.uk