

### 1. SAFETY INSTRUCTIONS

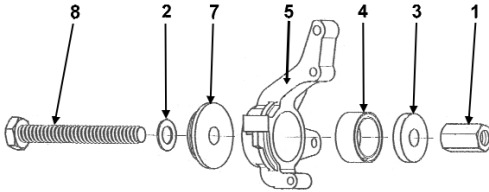
- ❑ **WARNING!** Ensure all Health and Safety, local authority, and general workshop practice regulations are strictly adhered to when using tools.
- x **DO NOT** use tools if damaged or worn.
- ✓ Maintain the tools in good and clean condition for best and safest performance.
- ✓ Ensure all threads are clean and well lubricated.
- ✓ Ensure vehicle is adequately supported with axle stands, ramps, etc. as appropriate.
- ✓ Wear suitable clothing to avoid snagging. Do not wear jewellery. Tie back long hair.
- ✓ Wear approved eye protection. A full range of personal safety equipment is available from your Sealey dealer.
- ✓ Account for all tools and parts being used and do not leave them in or on the vehicle.

**IMPORTANT:** Always refer to the vehicle manufacturer's service instructions, or proprietary manual, to establish the correct procedure and data. These instructions for use are provided as a guide only.

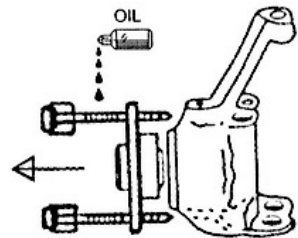
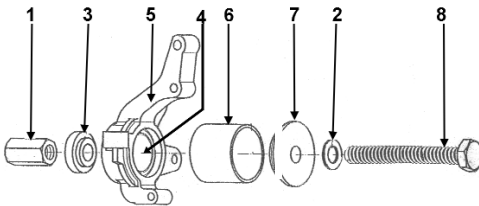
- ❑ **WARNING!** The warnings, cautions and instructions discussed in this instruction manual cannot cover all possible conditions and situations that may occur. It must be understood that common sense and caution are factors which cannot be built into this product, but must be applied by the operator.

### 2. INSTRUCTIONS

#### ASSEMBLY



#### DISASSEMBLY



- |    |                      |    |                   |
|----|----------------------|----|-------------------|
| 1. | <b>ADJUSTING NUT</b> | 5. | <b>HUB</b>        |
| 2. | <b>WASHER</b>        | 6. | <b>BARREL</b>     |
| 3. | <b>BEARING CAP</b>   | 7. | <b>BARREL CAP</b> |
| 4. | <b>BEARING</b>       | 8. | <b>SCREW</b>      |

Parts support is available for this product. To obtain a parts listing and/or diagram, please log on to [www.sealey.co.uk](http://www.sealey.co.uk), email [sales@sealey.co.uk](mailto:sales@sealey.co.uk) or phone 01284 757500.

**NOTE:** It is our policy to continually improve products and as such we reserve the right to alter data, specifications and component parts without prior notice.

**IMPORTANT:** No liability is accepted for incorrect use of this product.

**WARRANTY:** Guarantee is 12 months from purchase date, proof of which will be required for any claim.

**INFORMATION:** For a copy of our catalogue and latest promotions call us on 01284 757525 and leave your full name, address and postcode.