

Instructions for:

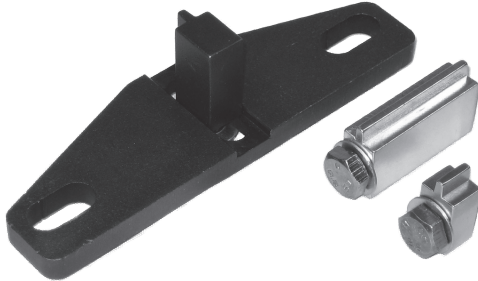
ENGINE FLYWHEEL HOLDING TOOL SET - FORD

Model No: **VS4834**

Thank you for purchasing a Sealey product. Manufactured to a high standard this product will, if used according to these instructions and properly maintained, give you years of trouble free performance.



IMPORTANT: PLEASE READ THESE INSTRUCTIONS CAREFULLY. NOTE THE SAFE OPERATIONAL REQUIREMENTS, WARNINGS AND CAUTIONS. USE THE PRODUCT CORRECTLY AND WITH CARE FOR THE PURPOSE FOR WHICH IT IS INTENDED. FAILURE TO DO SO MAY CAUSE DAMAGE AND/OR PERSONAL INJURY AND WILL INVALIDATE THE WARRANTY. PLEASE KEEP INSTRUCTIONS SAFE FOR FUTURE USE.

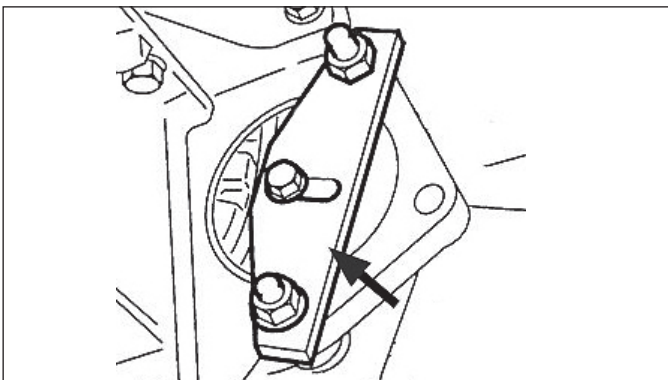


1. SAFETY INSTRUCTIONS

- WARNING!** Ensure Health and Safety, local authority and general workshop practice regulations are adhered to when using tools.
- DO NOT** use tools if damaged.
- Maintain tools in good and clean condition for best and safest performance.
- Ensure that a vehicle which has been jacked up is adequately supported with axle stands.
- Wear approved eye protection. A full range of personal safety equipment is available from your Sealey dealer.
- Wear suitable clothing to avoid snagging. Do not wear jewellery and tie back long hair.
- Account for all tools, locking bolts, pins and parts being used and do not leave them in or near the engine.
- WARNING!** Incorrect or out of phase camshaft timing can result in contact between valve head and piston crown causing damage to the engine.

IMPORTANT: These instructions are provided as a guide only. Always refer to the vehicle manufacturer's service instructions, or a proprietary manual, to establish the current procedure and data.

WARNING: The warnings, cautions and instructions discussed in this manual cannot cover all possible conditions and situations that may occur. It must be understood that common sense and caution are factors which cannot be built into this product, but must be applied by the operator.



VS4834 Flywheel Locking Tool Set includes a Main Plate and 3 x inter-changeable Adaptors.
Each Adaptor comes complete with securing bolt for attaching to the

Main Plate to make up 3 different configurations – "Tool Assemblies".
Select the appropriate Adaptor. Fix it to the Main Plate with bolt, finger tight only.
Remove the starter motor and fix the "Tool Assembly" securely, in place of the starter motor.
Slide the Adaptor in to the teeth of the flywheel and secure the Adaptor in place by tightening the bolt.

2. INTRODUCTION / APPLICATIONS

Ford 1.8/2.0 Diesel and 1.6Ti-VCT Petrol engines.

Locks crankshaft in timed position by locating into flywheel. Also suitable for counter-holding crankshaft when releasing or tightening crankshaft pulley bolts. Supplied with locking tag.

FORD

1.8 TDi/TDdi/TDCi diesel engines (Belt) – Adaptor "A"

| | | |
|----------------|-------------|-----------------|
| Fiesta/Courier | Focus/C-Max | Tourneo Connect |
| Mondeo | S-Max | Galaxy |

Transit Connect

RTN, RTQ, RTP, BHDB, BHPA, C9DA, C9DB, C9DC, F9DA, F9DB, FFBA, FFDA, FFWA, HPCA, HPCB, P7PA, P9PA, QYBA, QYWA, R2PA, R3PA, RWPA, KKDA,

2.0TDCi diesel engines (Belt) – Adaptor "B"

| | | |
|-------------|-------|--------|
| Focus/C-Max | S-Max | Galaxy |
|-------------|-------|--------|

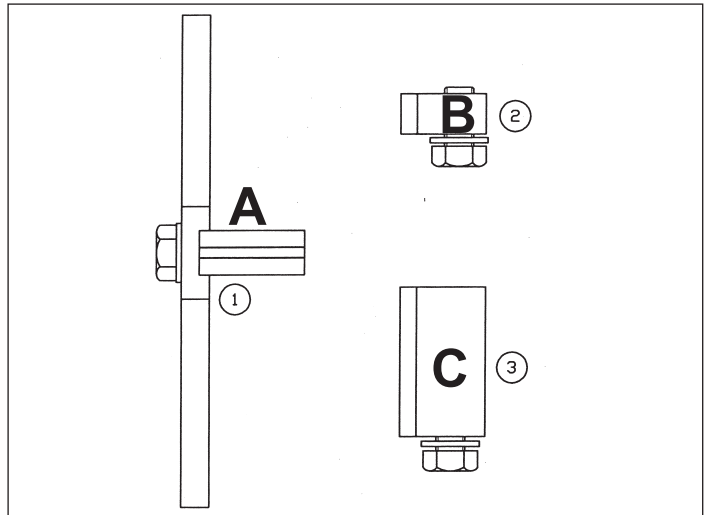
AZWA, G6DA, G6DB, G6DC, QXWA

1.6Ti-VCT petrol engines (Belt) – Adaptor "C"

| | | |
|-------|-------------|--------|
| Focus | Focus C-Max | Mondeo |
|-------|-------------|--------|

HXDA

3. CONTENTS



Set contents

| Item | Part Number | Description |
|------|-------------|---|
| 1 | VS1012/02 | Flywheel Locking Tool (Main Plate with Adaptor "A") |
| 2 | VS4834/01 | Adaptor ("B") |
| 3 | VS4834/02 | Adaptor ("C") |

NOTE: It is our policy to continually improve products and as such we reserve the right to alter data, specifications and component parts without prior notice.

IMPORTANT: No liability is accepted for incorrect use of this product. **WARRANTY:** Guarantee is 12 months from purchase date, proof of which will be required for any claim. **INFORMATION:** For a copy of our latest catalogue and promotions call us on 01284 757525 and leave your full name and address, including postcode.