



INSTRUCTIONS FOR
AXLE STANDS (PAIR) 3TONNE CAPACITY PER STAND
RATCHET TYPE WITH SAFETY PIN
 MODEL NO: **VS2003DL**

Thank you for purchasing a Sealey product. Manufactured to a high standard, this product will, if used according to these instructions, and properly maintained, give you years of trouble free performance.

IMPORTANT: PLEASE READ THESE INSTRUCTIONS CAREFULLY. NOTE THE SAFE OPERATIONAL REQUIREMENTS, WARNINGS & CAUTIONS. USE THE PRODUCT CORRECTLY AND WITH CARE FOR THE PURPOSE FOR WHICH IT IS INTENDED. FAILURE TO DO SO MAY CAUSE DAMAGE AND/OR PERSONAL INJURY AND WILL INVALIDATE THE WARRANTY. KEEP THESE INSTRUCTIONS SAFE FOR FUTURE USE.

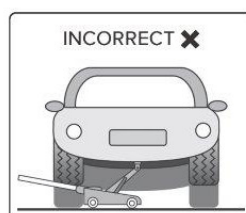
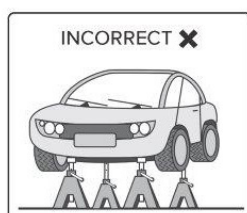
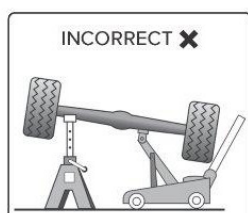
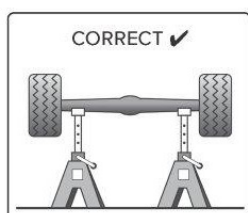
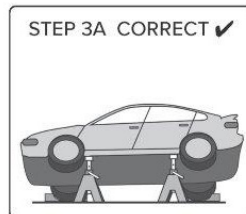
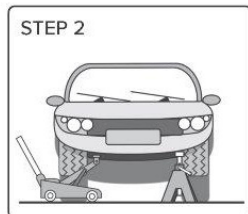
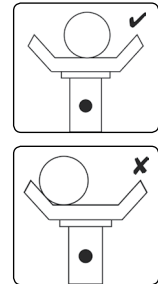


Refer to
 Instructions

1. SAFETY

- ❑ **WARNING!**
DO NOT OVERLOAD AXLE STANDS BEYOND RATED CAPACITY. OVERLOADING CAN CAUSE DAMAGE TO, OR FAILURE OF, THE AXLE STANDS. POSITION LOAD ON CENTRE OF CRUTCH/SADDLE ONLY. ALWAYS USE STANDS IN PAIRS ON HARD LEVEL SURFACE CAPABLE OF SUSTAINING THE LOAD. USE OF STANDS ON OTHER THAN HARD LEVEL SURFACES CAN RESULT IN LOAD INSTABILITY AND POSSIBLE LOSS OF LOAD. DO NOT USE ON TARMACADAM. FAILURE TO FOLLOW THESE INSTRUCTIONS MAY RESULT IN DAMAGE TO AXLE STANDS, LOSS OF LOAD RESULTING IN PROPERTY DAMAGE, SERIOUS PERSONAL INJURY OR LOSS OF LIFE.

- ▲ **DANGER! GREAT CARE MUST BE TAKEN TO ENSURE YOU LOWER THE VEHICLE (OR OTHER LOAD) SLOWLY AND CAREFULLY ONTO THE CENTRES OF THE CRUTCH/SADDLE OF THE AXLE STANDS.**
- ✓ Use only as specified by the manufacturer.
- ✓ Ensure the load does not exceed the maximum capacity as marked on the axle stand, per pair.
- ✓ Use no more than a single pair of stands either on the front, rear or one side of the vehicle. Use in pairs.
- ✓ No alterations or modifications shall be made to this product.
- ✓ Use on a hard, level surface, e.g. concrete. **DO NOT** use on uneven ground or tarmacadam.
- ✓ Securely chock wheels in contact with the ground. Before jacking and placing the stands, apply vehicle handbrake (put automatics in 'Park').
- ✓ Make sure that each stand is securely located under a strong point on the vehicle; consult the vehicle manufacturer's handbook for guidance. Ensure that height adjust locking mechanism is fully located before applying any load to the axle stand.
- ✓ Ensure that the load is located centrally on the saddle, and that the weight is directed through the vertical axis of the stand.
- ✓ Exercise extra care when using with a three wheeled vehicle or a trailer. Refer to vehicle manufacturer's instructions.
- ✓ Once vehicle is supported, ensure that the vehicle and stands are stable before starting work. Ensure that it is not possible for the vehicle to move before commencing any work.
- ✓ Inspect stands before each use. **DO NOT** use if they show signs of damage. **DO NOT** use if it is suspected that they have been overloaded.
- ✓ Before commencing any work or going beneath the vehicle, undertake a risk assessment. Ensure that a responsible person is aware of the work about to be undertaken.
- ✓ Replace any labels on the axle stand should they become unreadable. This applies in particular to any warning or operation instruction labels. If replacement labels are required, contact your Sealey stockist.
- ✗ **DO NOT** use axle stands on the highway, or anywhere else if it is deemed to be unsafe.
- ✗ **DO NOT** push or twist the vehicle/load whilst it is supported on stands.
- ✗ **DO NOT** mix components between stands. Use only as supplied.
- ✗ **DO NOT** allow children or animals in the vicinity of a vehicle supported on axle stands.
- ✗ **DO NOT** leave a vehicle on axle stands in an area that could be considered a hazard to others or property.
- ✓ **FOLLOW STEPS 1, 2, AND 3 TO CORRECTLY PLACE VEHICLE / LOAD ONTO AXLE STANDS.**



2. INTRODUCTION

Ratchet type axle stands, with cast iron support posts. Features angled teeth in posts, which prevent accidental release of the load - the more weight applied, the tighter the post is locked. Fitted with additional safety locking pin to prevent accidental handle release. Sold in pairs.

3. SPECIFICATION

Model no: VS2003DL
Capacity each: 3 tonne (3,000 kg)
Capacity Pair: 6 tonne (6,000 kg)
Min. Height: 280 mm
Max. Height: 425 mm

4. ASSEMBLY

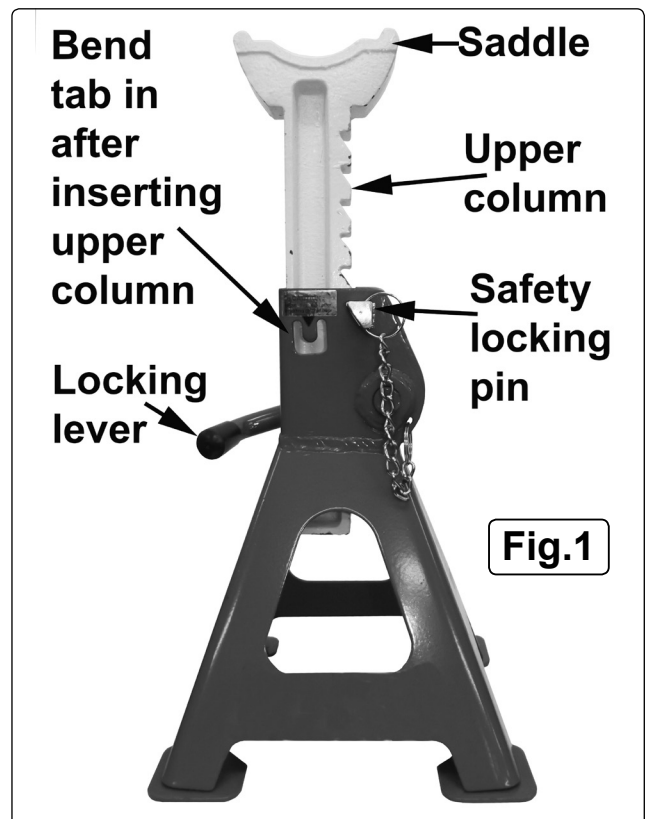
- 4.1. Insert the upper column into the base frame and stand (fig.1).
- 4.2. Ensure the toothed side of upper column will engage with the locking lever mechanism.
- 4.3. Bend in locking tab using a drift or similar and a hammer (fig.1).
- 4.4. Check the base frame and stand is in good condition and has not suffered damage during transit.

5. OPERATION

- 5.1. Refer to manufacturer's instructions for recommended jacking/support points.
 - 5.2. Check to ensure jacking/support points are in good condition. Position the stands beneath their support points.
 - 5.3. To adjust the stands:
 - 5.3.1. Hold the locking lever up while lifting the upper column to required height. Push the locking lever down to lock the pawl into the upper column teeth (fig.1).
- WARNING! ENSURE PAWL IS FULLY ENGAGED WITH TEETH.**
- 5.4. Insert safety locking pin **BEFORE** load is supported.
 - 5.5. Carefully and slowly lower vehicle onto stands. Ensure load bearing points sit in the centre of the saddles and that the stands are stable. Also ensure that there are no objects or persons that could impede the safe lowering of the vehicle onto the stands.
- DANGER!** You must follow instructions carefully and ensure you **DO NOT** load the stands off centre. Failure to adhere to these warnings may cause damage, injury or loss of life!

6. MAINTENANCE

- 6.1. Before each use, check that stands and stand welds are not cracked and that there are no missing or damaged parts.
- 6.2. Any suspect axle stands must be removed from service immediately.
- 6.3. Due to the potential hazards associated with stands, do not misuse, or make any modification to, the stands or components
- 6.4. It is the responsibility of the owner to ensure that the operator has read these instructions together with the safety features on the side of the stand and that the operator is aware of the stand uses and limitations.



Environmental Protection
Recycle unwanted materials instead of disposing of them as waste. All tools, accessories and packaging should be sorted, taken to a recycling centre and disposed of in a manner which is compatible with the environment. When the product becomes completely unserviceable and requires disposal, drain off any fluids (if applicable) into approved containers and dispose of the product and the fluids according to local regulations.

NOTE: It is our policy to continually improve products and as such we reserve the right to alter data, specifications and component parts without prior notice.

IMPORTANT: No liability is accepted for incorrect use of this product.

WARRANTY: Guarantee is 12 months from purchase date, proof of which will be required for any claim.



Sole UK Distributor, Sealey Group.
Kempson Way, Suffolk Business Park,
Bury St. Edmunds, Suffolk.
IP32 7AR



01284 757500



01284 703534



www.sealey.co.uk



sales@sealey.co.uk