

Thank you for purchasing a Sealey product. Manufactured to a high standard this product will, if used according to these instructions and properly maintained, give you years of trouble free performance.

**⚠ IMPORTANT: PLEASE READ THESE INSTRUCTIONS CAREFULLY. NOTE THE SAFE OPERATIONAL REQUIREMENTS, WARNINGS, AND CAUTIONS. USE THIS PRODUCT CORRECTLY, AND WITH CARE FOR THE PURPOSE FOR WHICH IT IS INTENDED. FAILURE TO DO SO MAY CAUSE DAMAGE AND/OR PERSONAL INJURY AND WILL INVALIDATE THE WARRANTY.**

**1. SAFETY INSTRUCTIONS**

- ❑ **WARNING!** Ensure all health and safety, local authority, and general workshop practice regulations are strictly adhered to when using tools.
- ✗ DO NOT use tools if damaged.
- ✓ Keep fingers clear of valves and springs when the tool is operated.
- ✓ Check arm for signs of damage before use.
- ✓ Maintain the tool in good and clean condition for best and safest performance.
- ✓ If required, ensure vehicle to be worked on is adequately supported with axle stands, ramps and chocks.
- ✓ Wear approved eye protection. A full range of personal safety equipment is available from your Sealey dealer.
- ✓ Wear suitable clothing to avoid snagging. Do not wear jewellery and tie back long hair.
- ✓ Account for all tools, locking bolts, pins and parts being used and do not leave them in or near engine.
- ▲ **IMPORTANT:** Always refer to the vehicle manufacturer's service instructions, or proprietary manual to establish the current procedure and data. These instructions for use are provided as a guide only.

**2. INTRODUCTION & SPECIFICATION**

Fast and simple compression of valve springs. Precision made, lightweight aluminium yoke and smooth-acting pneumatic ram make light work of valve spring removal – especially on modern multi-valve engines. Time savings of between 60 and 70% have been achieved using this tool. Supplied in deluxe storage case.

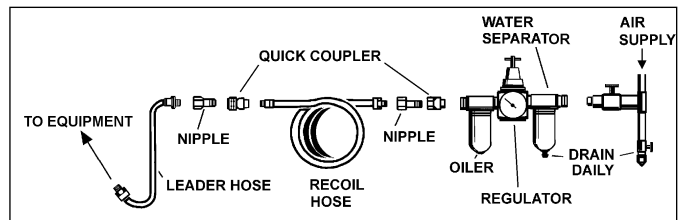
Max Compression Force: .....100kg @ 8bar(116psi)  
 Throat Depth: .....170mm  
 Jaw Opening: .....250mm  
 Spring Adaptors: .....Ø20.5, Ø22, Ø24, Ø26, Ø29, Ø34, Ø41, Ø50mm  
 Optional Adaptor: .....VS1541 - Ø15mm Cage Adaptor suitable for small valve applications including VW/Audi TT 1.8T

**3. PREPARING COMPRESSOR FOR USE**

**3.1 AIR SUPPLY**

Recommended hook-up is shown below.

- ❑ **WARNING!** Ensure the air supply is clean and does not exceed 116 psi while operating the compressor.
- Too high an air pressure and/or unclean air will cause excessive wear, and may be dangerous, causing damage and/or personal injury.
- 3.1.1 Ensure that the compressor's air valve (or throttle) is in the "off" position before connecting to the air supply.
- 3.1.2 You will require an air pressure of 8bar (116psi).
- 3.1.3 Drain the air tank daily. Water in the air line will damage the grinder and invalidate your warranty.
- 3.1.4 Clean air inlet filter weekly.
- 3.1.5 Line pressure should be increased to compensate for unusually long air hoses (over 8 metres). The minimum hose diameter should be 1/4" I.D. and fittings must have the same inside dimensions.
- 3.1.6 Keep hose away from heat, oil and sharp edges. Check hoses for wear, and make certain that all connections are secure.



**4. OPERATION**

**4.1 VALVE SPRING REMOVAL**

- 4.1.1 Select valve remover and bush to suit the valve spring seat and attach to the spring compressor (fig 1:1) using the screw and washer provided.
- 4.1.2 Loosen cylinder clamp screw (fig 1:2) and connect air supply to control valve (fig 1:4).
- 4.1.3 Place the valve remover and bush onto the valve spring seat and then open the air control by pushing the sleeve forward, towards the cylinder (fig 2).
- 4.1.4 The piston stem will move forward to contact the valve head and then the cylinder will slide back in the compressor until it reaches the end of the travel.
- 4.1.5 Close the air control by sliding the sleeve rearwards and the cylinder will move forward under the force of the internal spring.
- 4.1.6 When the cylinder has moved forward one graduation (1cm), or two graduations if the valve has two springs, tighten clamp screw.
- 4.1.7 Re-opening the air control valve will now compress the spring, allowing the collets to be removed.
- 4.1.8 It is recommended that you use a collet remover such as:  
 VS165, VS1651 or VS1652 (refer to Sealey catalogue for more information).
- 4.1.9 Close the air control valve, the compressor and the spring can now be removed.
- 4.1.10 When installing the valve spring use the compressor as above to compress the spring so that the collets can be fitted.

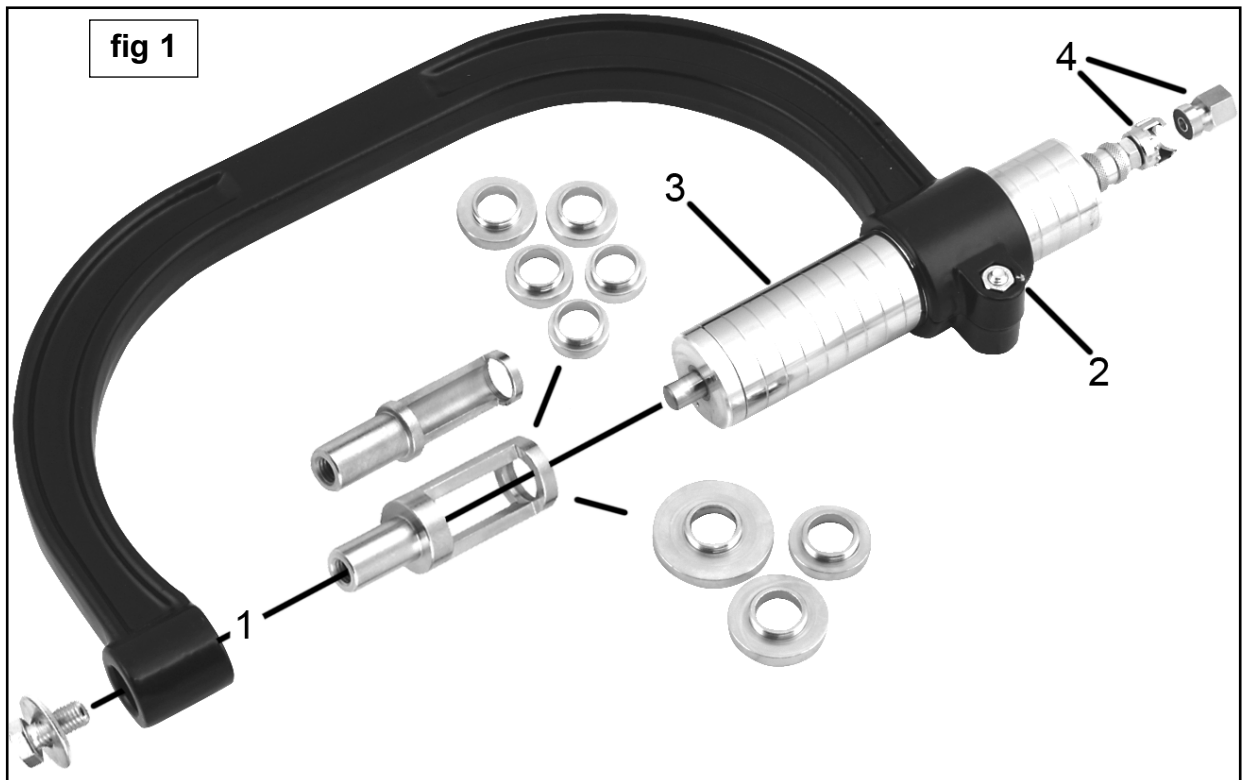


fig 2

## 5. MAINTENANCE

### 5.1 GENERAL

5.1.1 Remove any deposits, such as dust, oil and grease, every 3 months or as required, using a clean cloth with warm soapy water.

5.1.2 Do not use solvents as this may damage the spring compressor.

### 5.2 REPAIRS

5.2.1 Replace or repair damaged parts. Use genuine parts only. Unauthorised parts may be dangerous and will invalidate the warranty.



01284 757500



01284 703534

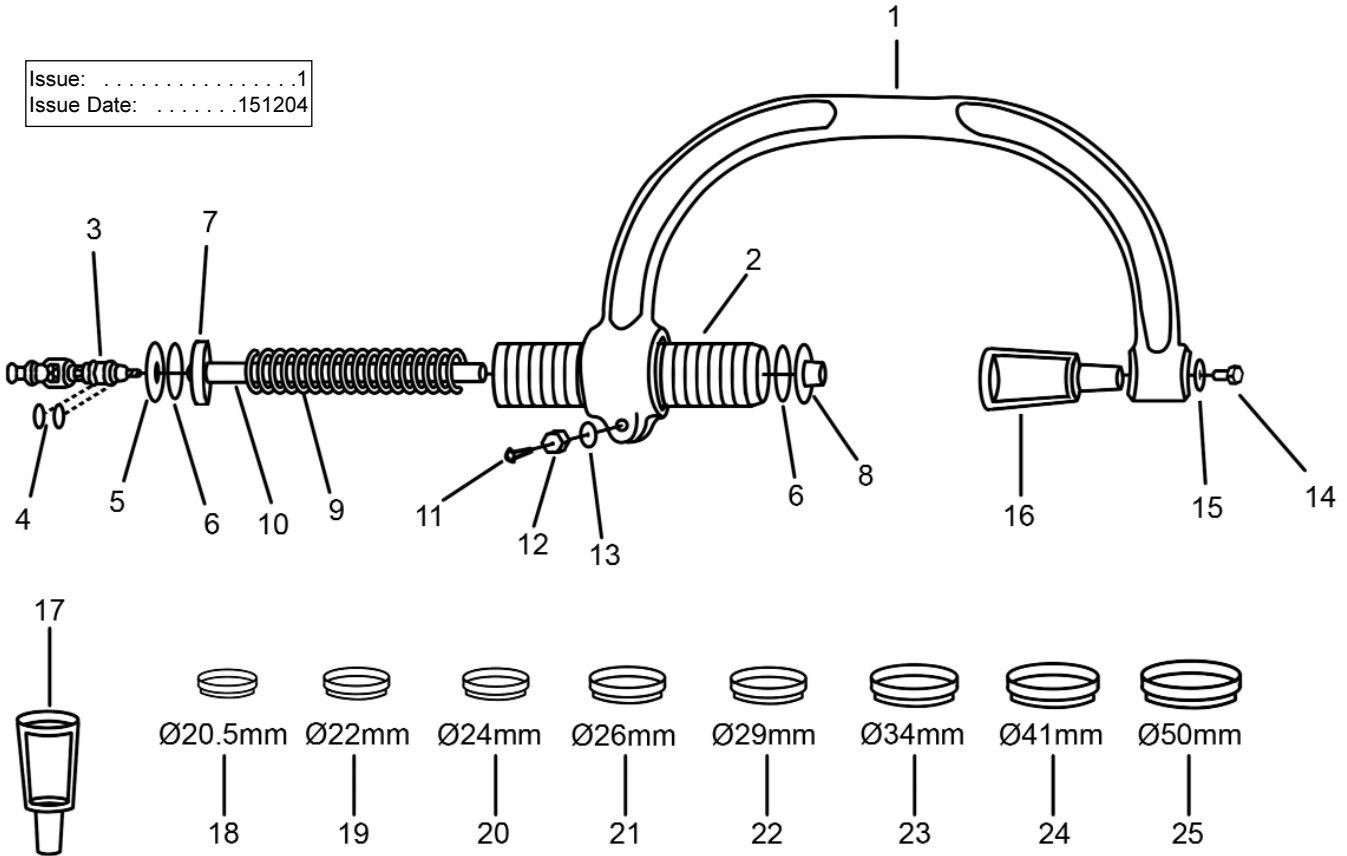


[www.sealey.co.uk](http://www.sealey.co.uk)



[sales@sealey.co.uk](mailto:sales@sealey.co.uk)

Issue: .....1  
 Issue Date: .....151204



ITEM	PART NO.	DESCRIPTION
01.	VS1540.01	ALUMINIUM ARC
02.	VS1540.02	TUBE 40 LENGTH = 180mm
03.	VS1540.03	CONTROL VALVE ASSEMBLY
04.	VS1540.04	O-RING FOR CONTROL VALVE
05.	VS1540.05	CYLINDER BOTTOM 40mm
06.	VS1540.06	O-RING FOR CYLINDER 40MM
07.	VS1540.07	PISTON BLOCK 40mm
08.	VS1540.08	CYLINDER HEAD 40mm
09.	VS1540.09	SPRING
10.	VS1540.10	STEM
11.	VS1540.11	SCREW
12.	VS1540.12	NUT M8
13.	VS1540.13	WASHER

ITEM	PART NO.	DESCRIPTION
14.	VS1540.14	SCREW M12 X 25
15.	VS1540.15	WASHER
16.	VS1540.16	STANDARD VALVE REMOVER
17.	VS1540.17	VALVE REMOVER 16-32
18.	VS1540.18	BUSH 24, 5-21, 1mm
19.	VS1540.19	BUSH 25-22, 1mm
20.	VS1540.20	BUSH 27-24, 1mm
21.	VS1540.21	BUSH 29-26, 1mm
22.	VS1540.22	BUSH 32-29, 1mm
23.	VS1540.23	BUSH 34-31, 1mm
24.	VS1540.24	BUSH 41-38, 1mm
25.	VS1540.25	BUSH 50-46, 1mm
-	VS1541	OPTIONAL VALVE REMOVER Ø15mm

**NOTE:** It is our policy to continually improve products and as such we reserve the right to alter data, specifications and component parts without prior notice. **IMPORTANT:** No liability is accepted for incorrect use of this equipment. **WARRANTY:** Guarantee is 12 months from purchase date, proof of which will be required for any claim. **INFORMATION:** For a copy of our latest catalogue and promotions call us on 01284 757525 and leave your full name and address, including postcode.

**Declaration of Conformity** We, the sole importer into the UK, declare that the product listed here is in conformity with the following standards and directives.

<p><b>AIR OPERATED VALVE          SPRING COMPRESSOR</b>  <b>Model: VS1540</b>          98/37/EC Machinery Directive          93/68/EEC Marking Directive</p>	<p>CE The construction file for this product is held by the Manufacturer and may be inspected, by a national authority, upon request to Jack Sealey Ltd.</p> <p>Signed by Mark Sweetman  15th December 2004</p>	<p>For Jack Sealey Ltd.          Sole importer into the UK          of Sealey Professional Tools</p>
--	---	--