

Thank you for purchasing a Sealey product. Manufactured to a high standard this product will, if used according to these instructions and properly maintained, give you years of trouble free performance



IMPORTANT: PLEASE READ THESE INSTRUCTIONS CAREFULLY. NOTE THE SAFE OPERATIONAL REQUIREMENTS, WARNINGS & CAUTIONS. USE THE PRODUCT CORRECTLY AND WITH CARE FOR THE PURPOSE FOR WHICH IT IS INTENDED. FAILURE TO DO SO MAY CAUSE DAMAGE AND/OR PERSONAL INJURY AND WILL INVALIDATE THE WARRANTY. PLEASE KEEP INSTRUCTIONS SAFE FOR FUTURE USE.

1. SAFETY INSTRUCTIONS

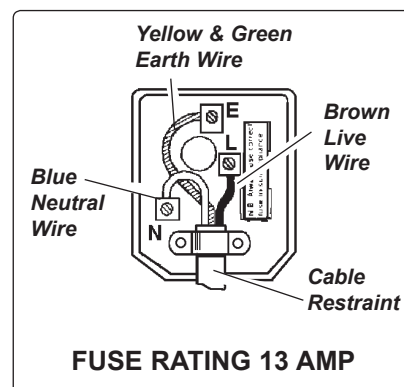
1.1. ELECTRICAL SAFETY


WARNING! It is the responsibility of the owner and the operator to read, understand and comply with the following:

You must check all electrical products, before use, to ensure that they are safe. You must inspect power cables, plugs, sockets and any other connectors for wear or damage. You must ensure that the risk of electric shock is minimised by the installation of appropriate safety devices. A Residual Current Circuit Breaker (RCCB) should be incorporated in the main distribution board. We also recommend that a Residual Current Device (RCD) is used. It is particularly important to use an RCD with portable products that are plugged into a supply which is not protected by an RCCB. If in any doubt consult a qualified electrician. You may obtain a Residual Current Device by contacting your Sealey dealer.

You must also read and understand the following instructions concerning electrical safety.

- 1.1.1. The **Electricity at Work Act 1989** requires that all portable electrical appliances, if used on business premises, are tested by a qualified electrician, using a Portable Appliance Tester (PAT), at least once a year.
- 1.1.2. The **Health & Safety at Work Act 1974** makes owners of electrical appliances responsible for the safe condition of those appliances and the safety of the appliance operators. **If in any doubt about electrical safety, contact a qualified electrician.**
- 1.1.3. Ensure that the insulation on all cables and on the appliance is safe before connecting it to the power supply. See 1.1.1. and 1.1.2. and use a Portable Appliance Tester.
- 1.1.4. Ensure that cables are always protected against short circuit and overload.
- 1.1.5. Regularly inspect power supply cables and plugs for wear or damage and check all connections to ensure that none is loose.
- 1.1.6. **Important:** Ensure that the voltage marked on the appliance matches the power supply to be used and that the plug is fitted with the correct fuse - see fuse rating at right.
- 1.1.7. **DO NOT** pull or carry the appliance by the power cable.
- 1.1.8. **DO NOT** pull the plug from the socket by the cable.
- 1.1.9. **DO NOT** use worn or damaged cables, plugs or connectors. Immediately have any faulty item repaired or replaced by a qualified electrician. When a BS 1363/A UK 3 pin plug is damaged, cut the cable just above the plug and **dispose of the plug safely.** Fit a new plug according to the following instructions (UK only).
 - a) Connect the **GREEN/YELLOW earth wire to the earth terminal 'E'.**
 - b) Connect the **BROWN live wire to the live terminal 'L'.**
 - c) Connect the **BLUE neutral wire to the neutral terminal 'N'.**
 - d) **After wiring, check that there are no bare wires, that all wires have been correctly connected, that the cable outer insulation extends beyond the cable restraint and that the restraint is tight.**



Double insulated products, which are always marked with this symbol , are fitted with live (brown) and neutral (blue) wires only. To rewire, connect the wires as indicated above - **DO NOT** connect either wire to the earth terminal.

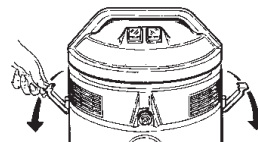
- 1.1.10. If an extension reel is used it should be fully unwound before connection. A reel with an RCD fitted is preferred since any appliance plugged into it will be protected. The cable core section is important and should be at least 1.5mm², but to be absolutely sure that the capacity of the reel is suitable for this product and for others which may be used in the other output sockets, we recommend the use of 2.5mm² section cable.

1.2 GENERAL SAFETY

- ✓ Disconnect the machine from mains power supply before servicing, changing accessories, or performing any maintenance.
- ✓ Use genuine accessories and parts only (*unauthorised accessories and parts may be dangerous, and will invalidate your warranty*).
- ✓ Maintain the Valet machine in good condition. Use authorised agent for servicing. Keep machine clean, but **DO NOT** use solvents.
- ✓ Ensure the correct filter is firmly in place before operating the Auto Valet. *Wrong filters will invalidate your warranty.*
- ✓ Wear protective clothing and gloves.
- x DO NOT allow children or untrained persons to operate the unit.
- x DO NOT place attachments close to your face (especially eyes, ears, etc). Do not point the hose end at other persons or animals.
- ❑ **WARNING!** *DO NOT get detergent on flesh. If contact is made wash immediately. NEVER allow detergent near eyes, or mouth. If contact is made, thoroughly rinse and seek medical advice. If swallowed, seek immediate medical advice. Follow instructions on the detergent container*
- ▲ **DANGER!** *DO NOT vacuum hot, or glowing ash, cigarette ends, inflammable, explosive, corrosive or dangerous liquids, solids or dusts.*
- x DO NOT operate the unit without the correct filter for the type of job. Make sure the filter is firmly in place.
- x DO NOT operate the pump switch when there is no liquid in the detergent tank. The vacuum motor runs independently of the pump.
- x DO NOT leave machine running unattended. Turn power supply OFF, and DO NOT leave the vicinity until motor has come to a complete stop.
- x DO NOT operate the Auto Valet while under the influence of drugs, alcohol or impairing medication, or if you are fatigued.
- x DO NOT force the Auto Valet to achieve a task it is not designed to perform.
- x DO NOT clean the filters with solvents. When not in use store the valet machine in a safe, dry, childproof location.

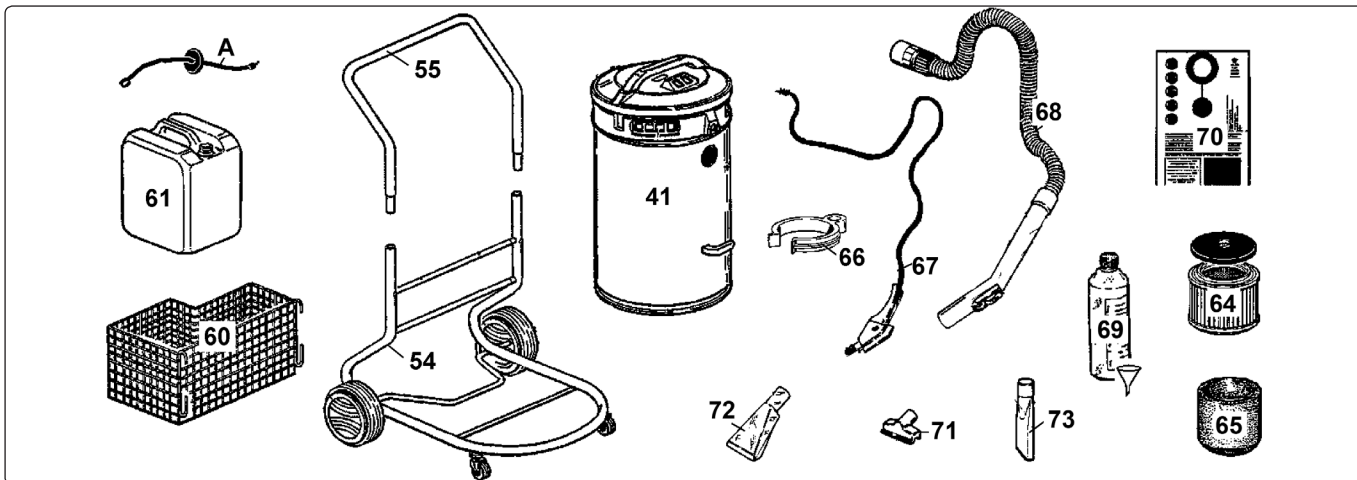
2. PACKAGE CONTENTS & ASSEMBLY

fig 1.



2.1. Carton Content

- 2.1.1. Carefully unpack the carton content and view the main body of the vacuum cleaner.
- 2.1.2. Locate the two side clips which hold the motor head in place (fig 1).
- 2.1.3. Undo the clips, remove the motor head and take out the contents of the tank.
- 2.1.4. Check and identify each component as listed below. If anything is missing or damaged please contact your supplier immediately.



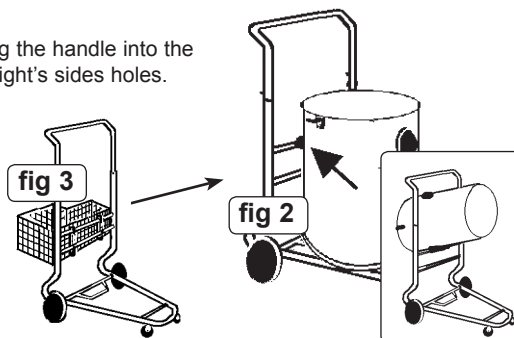
LIST OF CONTENTS.

(Item numbers correspond to the spare parts list).

Item No	Description	Item No	Description
61	Detergent tank	69	Detergent & Funnel
64	Cartridge Filter	70	Vertical Paper collection Bag
65	Foam Filter	71	Narrow pick up nozzle
41	Main body (incorp Motor head & Tank)	72	Upholstery tool
48	Trolley handle	73	Small Nozzle
54	Trolley base		
60	Wire basket	68	Flexible Hose
A	Detergent pick up (Parts list items 5/8/61/62/63)		
66	Clips x 6		
67	Pistol System, (trigger & tube)		

2.2. Assembly

- 2.2.1. Fit the trolley handle to the trolley by pressing in the spring lugs and pushing the handle into the base upright until the spring lugs automatically locate themselves in the upright's sides holes.
- 2.2.2. Place the vacuum cleaner onto the trolley base with the vacuum hose outlet pointing outward (fig 2).
- 2.2.3. Locate the vacuum trolley clip at the back of the main drum and push it onto the 2nd cross bar of the trolley. Check to ensure the drum can lift and swing freely on this bar (fig 2).
- 2.2.4. Take the wire basket and hook it onto the two cross bars at the rear of the trolley (fig 3).
- 2.2.5. Seat the detergent tank in the larger of the basket areas.



3. DRY VACUUM CLEANING

WARNING! Ensure you read, understand and apply chapter 1 "Safety Instructions". Reminder: DO NOT vacuum hazardous dust or other substances. Use of an incorrect filter will invalidate your warranty. The green pump switch will operate independently of the vacuum motor. Only press this switch if using the machine as a WET vacuum cleaner (see chapter 4).

To use the machine as a "DRY" car fabric cleaner, (no liquids involved), proceed as follows:

- 3.1. Ensure the machine is unplugged from the mains power supply.
- 3.2. Remove the vacuum's motor head, and fit the correct cartridge filter (figs 4, 5, 6).
- 3.3. Fit the paper dust bag onto the inside of the vacuum intake pipe (see fitting instructions on side of bag).
- 3.4. Reposition the head onto the drum body ensuring that the switches face forward, and clip in place.
- 3.5. Connect flexible hose to the front inlet on the tank.
- 3.6. Attach the appropriate end nozzle: Flat or Tapered Nozzles.
- 3.7. Plug in to power supply, and **PRESS THE BLACK MOTOR "ON" SWITCH ONLY. DO NOT TOUCH THE GREEN PUMP SWITCH** (fig 7). You are now ready to use the Auto Valet machine as an ordinary vacuum cleaner for vacuuming car interiors.
- 3.8. When you have completed vacuuming, switch the **BLACK MOTOR SWITCH "OFF"**, and unplug from the mains.
- 3.9. Regularly check the dust bag and remove when it is 2/3 full. Seal bag opening with the cap attached and dispose of the bag. The bag is manufactured so that air, not dust, will filter through the paper and as such the dust bag **must not** be reused.
- 3.10. If you wish to use the machine for a wet application and the dust bag is less than 2/3 full, carefully remove the bag, store for future use, and wipe the tank clean.

fig 4

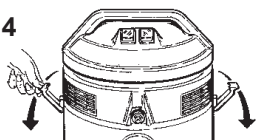


fig 5

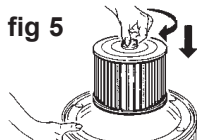


fig 6

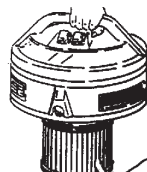
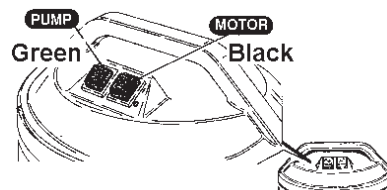


fig 7



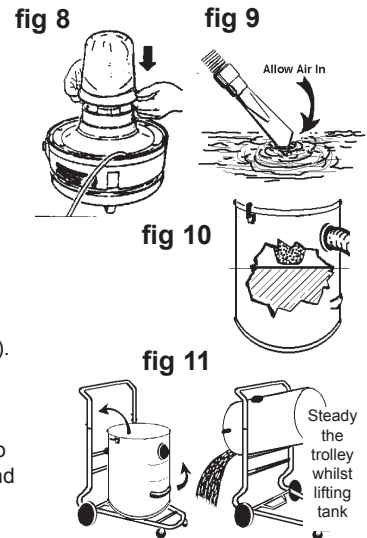
4. WET VACUUM CLEANING

For the vacuuming of liquids only

WARNING! Ensure you read, understand and apply chapter 1 "Safety Instructions". Reminder: Remove plug from mains power supply before opening unit. DO NOT vacuum solvents, explosives, inflammable or hazardous liquids, petrol, oil, spirit, paint, thinner and/or chemicals. The use of incorrect filter will invalidate your warranty.

IMPORTANT: The water pump in this unit incorporates a thermal cut-out. Should the unit overheat, this will be tripped and the pump will temporarily stop working. In this event, leave unit to cool for approx. 10 minutes (depending on conditions) for the cut-out to reset and then restart the pump.

4. 1. Ensure the machine is unplugged from the mains power supply.
4. 2. Make sure the tank is clean and free from dust and dirt.
4. 3. Remove cartridge filter and dust bag if fitted (see 3.9 & 3.10).
4. 4. Fit the blue foam filter in place (fig 8).
4. 5. Replace the head onto the drum body.
4. 6. To the same flexible hose as used in dry cleaning fit the Flat, or Tapered Nozzle.
4. 7. Ensure the BLACK Motor Switch is in the "OFF" position before plugging in.
4. 8. Plug the cleaner into the mains power socket.
4. 9. Press the BLACK MOTOR SWITCH "ON" ONLY. DO NOT SWITCH THE PUMP ON.
4. 10. To vacuum large quantities of liquid, i.e from a sink, or tank, etc; do not immerse the nozzle completely in the liquid, leave a gap at one end of the nozzle to allow a partial air inflow. (fig 9).
4. 11. The machine is fitted with a FLOAT VALVE which stops the suction action when the tank has reached its maximum capacity. The user will also be aware of increased motor speed. When this happens, turn the machine off, disconnect from mains, remove the head from tank. Take care to maintain balance and not let trolley slip, and empty liquid out of the tank into an appropriate receptacle or drain (figs 10, 11). To continue vacuuming reverse the process and proceed.
- 4.12. After WET vacuuming turn the machine off and remove the plug from mains power supply.
- 4.13. Empty the tank, then clean and dry the inside before storage.



5. USE AS VALETING MACHINE

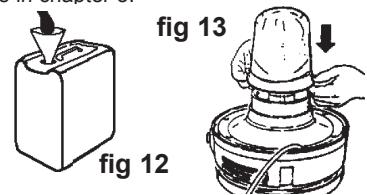
FOLLOWING INSTRUCTIONS REFER TO USE AS AN AUTOMOTIVE/INDUSTRIAL, FABRIC & UPHOLSTERY CLEANER.

WARNING! USE THE CORRECT DETERGENT: THE ONLY DETERGENT SUITABLE FOR THIS MACHINE IS SEALEY "VMR" or THE DETERGENT SUPPLIED WITH THE MACHINE. CONTACT YOUR SEALEY DEALER FOR SUPPLIES. DO NOT (UNDER ANY CIRCUMSTANCES) USE DOMESTIC DETERGENT OR ANY OTHER GENERAL PURPOSE CARPET CLEANER, CAR WASH, CLEANING OR UPHOLSTERY DETERGENT. OTHER DETERGENTS PRODUCE EXCESSIVE FOAM WHICH IS UNDESIRABLE FOR THE CLEANING PROCESS AND CAN DAMAGE THE WORKING PARTS OF YOUR MACHINE. IF, WHEN USING THE RECOMMENDED DETERGENT, YOU FIND EXCESSIVE FOAM BEING PRODUCED, THE CARPET OR FABRIC HAS BEEN PREVIOUSLY CLEANED WITH A FOAMING DETERGENT. SHOULD THIS HAPPEN, ADD 10cl OF ANTI-FOAMING AGENT (SEALEY PART NO VMR922) TO THE MAIN WASTE WATER TANK.

WARNING! ENSURE YOU READ, UNDERSTAND AND APPLY CHAPTER 1 "SAFETY INSTRUCTIONS". THE USE OF AN INCORRECT FILTER OR DETERGENT, WILL INVALIDATE THE WARRANTY. ALWAYS TEST MATERIALS FOR COLOUR FASTNESS BEFORE USING THE AUTO VALET.

5.1. FABRIC PREPARATION & DETERGENT

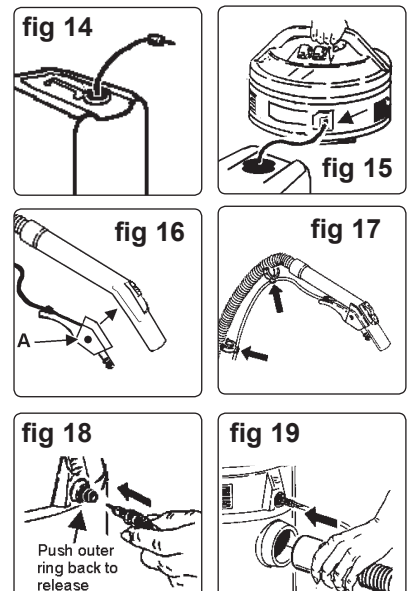
- 5.1.1. If the condition of the vehicle fabric, or item of upholstery requires dry vacuuming first, you may prefer to use an alternative vacuum cleaner, keeping your Auto Valet on standby ready for the wet clean.
- 5.1.2. Should you wish to use the Auto Valet for the preliminary dry clean, then set the machine up as in chapter 3.
- 5.1.3. To commence with the wet clean ensure you use the correct detergent as described in 5.1.
- 5.1.4. Remember to add 'Anti-foaming agent VMR922' to the waste tank if necessary.
- 5.1.5. Fill the plastic detergent tank with COLD water up to the "MAX" level indicator number 9, or according to the amount you wish to use (fig 12).
- 5.1.6. Add 20cl of SEALEY "VMR" or Supplied detergent (Note: 20cl is about half a coffee mug).
- 5.1.7. DO NOT USE ANY OTHER DETERGENT.
- 5.1.8. DO NOT increase the strength of detergent mix beyond 80 - 1.
- 5.1.9. If part of the fabric is badly soiled, rub in by gloved hand a mix of 80-1 detergent and leave for 2-3 minutes before valeting.



5.2. SETTING UP THE AUTO VALET

How to prepare, and assemble your valet machine ready for wet cleaning.

- 5.2.1. Ensure you unplug the machine from the main supply.
- 5.2.2. Having filled the detergent tank, place it in the trolley basket.
- 5.2.3. Remove the vacuum motor head and fit the blue foam filter (fig 13). Remove the cartridge filter and paper dust bag if fitted as they are for dry cleaning only.
- 5.2.4. Replace the motor head and secure with the side clips.
- 5.2.5. Insert the filter end of the detergent pick up pipe into the detergent tank, and seal by screwing (finger tight) the attached tank cap (fig 14).
- 5.2.6. Insert the other end of the pick up pipe to the rear of the motor head (fig 15).
- 5.2.7. Loosen the thumb screw on the pistol head (fig 16 A), and clip the pistol over the end of the vacuum hose (fig 16). Finger tighten the thumb screw and check that the pistol is adequately attached to the hose. Connect the detergent delivery tube to the main vacuum hose with clips provided (fig 17).
- 5.2.8. Push the other end of the delivery tube into the outlet located in the front of the motor head above the main hose outlet (fig 18). When disconnecting this tube, push the inlet ring back to release the delivery tube. DO NOT PULL THE TUBE.
- 5.2.9. The flexible vacuum hose should be fitted to the machine as normal (fig 19).
- 5.2.10. Attach the valeting tool head to the hose and detergent dispenser tube.



5.3. OPERATING THE AUTO VALET MACHINE

WARNING! Test materials for colour fastness, test on an area not normally noticed (i.e. under a car seat).

- 5.3.1. Plug the machine into the mains power supply.
- 5.3.2. Switch the **BLACK MOTOR SWITCH "ON"** to start the vacuum (fig 20).
DO NOT PRESS THE PISTOL TRIGGER AT THIS STAGE.
- 5.3.3. Place the cleaning head on the material to be cleaned and press the **GREEN PUMP SWITCH "ON"** (fig 20).
- 5.3.4. Press the trigger (fig 21) and move the tool slowly across the material by drawing the head towards you. Work in small areas at a time. The pump produces pressure which forces detergent into the fabric pile. During this first pass approximately 60% of the dirty fluid will be sucked back up into the waste tank.
- 5.3.5. Make a second pass **WITHOUT** pressing the trigger (fig 22). This will extract the remainder of the fluid from the material, leaving the fabric almost dry.
- 5.3.6. Allow the fabric, or upholstery to dry completely before walking, or sitting on it.

fig 20

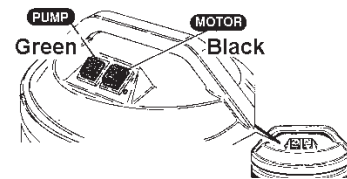


fig. 21

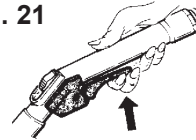
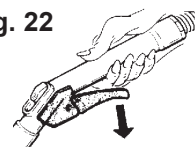


fig. 22



6. AFTER USE

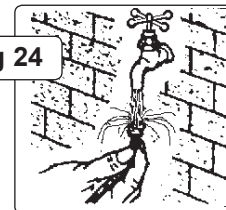
- 6.1. Remove the plug from the mains.
- 6.2. Remove the motor head.
- 6.3. Empty tank of dirty liquid by steadying the trolley and lifting the tank to empty content into a suitable waste receptacle or drain (fig 23). Take care to maintain balance and not let the trolley slip.
- 6.4. Empty and rinse out the detergent tank.
- 6.5. Fill the detergent tank with clean water, and flush the system by operating into a bucket, or drain. Continue to flush until all the dirty fluid has been expelled.
- 6.6. Rinse the tank clean.
- 6.7. Wipe the tank and fittings and leave to dry.
- 6.8. Check the filter at the end of the detergent pick-up pipe to ensure it is not clogged. If it is, remove and rinse under running water (fig 24).
- 6.9. Remove the main motor head filter and clean as in chapter 7.

NOTE: Before next use, check that the correct filter is fitted for the job you are going to perform. Use of wrong filter will invalidate your warranty.

fig 23



fig 24



7. MAINTENANCE

WARNING ENSURE YOU DISCONNECT FROM THE MAINS POWER SUPPLY BEFORE OPENING THE UNIT, OR CARRYING OUT ANY MAINTENANCE.

7.1. General Machine Maintenance.

- 7.1.1. Remove plug from the mains power supply before carrying out service or maintenance.
- 7.1.2. Regularly check and clean the filter connected to the end of the detergent pick-up pipe by running under a cold water tap (fig 24).
- 7.1.3. After having used the appliance as a wet cleaner, empty the contents. Clean and dry the tank and accessories to avoid scaling.
- 7.1.4. Periodically check to ensure the valet machine and accessories are not blocked or damaged, and are in good working order. Any damaged parts must be replaced immediately. Blocked hoses or tubes will impair performance and may damage the machine. Such damaged motor units returned for repair will not be accepted under the warranty and may incur expensive repair bills.

7.2. Cleaning Filters.

For optimum performance, all types of filters should be cleaned regularly. Unclean, damaged, or wrongly fitted filters will impair your machine's performance and may damage it. Such damaged motor units returned for repair will not be accepted under the warranty, and may incur expensive repair bills. Never use the machine without a filter. Dirt in motor will cause failure and will invalidate the warranty.

7.2.1. CLEANING FOAM FILTER. Used for wet cleaning.

- a) Wash the foam filter in a suitable container of lightly soapy water (DO NOT use solvents).
- b) Allow to dry before use. Check to see if the filter is worn, in which case it must be replaced with a new one.

7.2.2. CARTRIDGE FILTER CLEANING. Used for dry cleaning.

- a) Remove the filter cartridge from the motor head (fig 25).
- b) Regularly clean the cartridge filter by dusting with a soft bristle brush (fig 26).
- c) **DO NOT get the filter wet or wash filter in water or any other cleaning liquids as the filter will disintegrate (fig 27).**

NOTE: Inspect filters regularly, if large amounts of un-removable deposits are obvious, or if the filter is worn or damaged it must be replaced.

fig 25

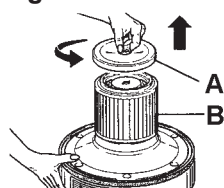


fig 26

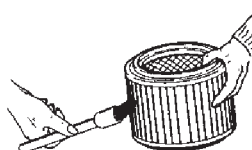
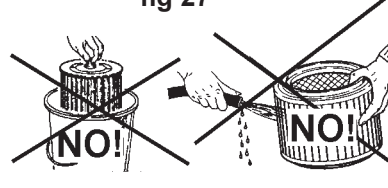


fig 27



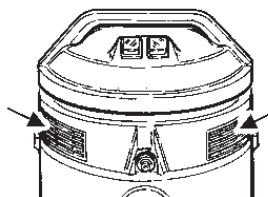
7.2.3. AIR OUTLET FILTER.

Behind the side grilles in the motor head, two special filters are located (fig 28) which ensure the air returned to the environment is as free as possible from impurities. The filters will require periodic changing, to do so use a coin (or similar) to gently lever off the grilles, remove the filters and replace with new ones. When refitting the grilles ensure the arrow on the inner part of the grilles points upwards.

We recommended you keep a spare of each filter type.

fig 28

Remove grilles and replace filters



8. TROUBLESHOOTING

Unit does not start.	No current. The power cable, switch, or motor faulty. Tank may be full of water.	Check the plug and fuse. Repair or replace faulty part. Empty tank if full.
	Water pump thermal cut-out has triggered.	Wait approx. 10 minutes for cut-out to reset
Dust comes from the motor unit.	Damaged filter, or filter incorrectly fitted.	Reposition or replace the filter. <i>Take care, as warranty may be lost.</i>
Low efficiency.	Container is full. Filter obstructed. Hose or accessory blocked.	Empty container. Clean or replace the filter (Chapter 7). Unblock hose or accessory.
Filter problems.	Outlet filter obstructed. Hose or tool blocked.	Check, clean, or replace the filter (chapter 7). Remove any obstruction from hose.
Motor speed increases or motor vibrates.	Container is full. Filter obstructed. Hose or accessory blocked.	Empty the container, clean, refit, or replace filter (Chapter 7). Unblock hose or accessory.
Foam comes out of the air filter.	Wrong detergent used, or used on carpet or fabric previously cleaned with foaming detergent.	Add Sealey VMR922 Anti-foaming agent to waste water tank (see 5.1).
Detergent solution spray not uniform.	Detergent filter clogged. Pick up pipe clogged.	Remove filter and clean (see 7.2.1) . Remove pick up pipe and clean filter (7.1.2).

CONSUMABLES

- Part No VMR921 Detergent for Valet Machine Packs of 12 x 1 Ltr Bottles.
- Part No VMR925 Detergent for Valet Machine Packs of 4 x 5 Ltr Containers.
- Part No VMR922 Defoaming Agent Packs of 12 x 1 Ltr Bottles.

NOTE: It is our policy to continually improve products and as such we reserve the right to alter data, specifications and component parts without prior notice.

IMPORTANT: No liability is accepted for incorrect use of this product.

WARRANTY: Guarantee is 12 months from purchase date, proof of which will be required for any claim.

INFORMATION: For a copy of our latest catalogue and promotions call us on 01284 757525 and leave your full name and address, including postcode.



	Sole UK Distributor, Sealey Group, Kempson Way, Suffolk Business Park, Bury St. Edmunds, Suffolk, IP32 7AR	01284 757500	www.sealey.co.uk
		01284 703534	sales@sealey.co.uk