



R66W RECHARGEABLE INSPECTION UV CURING LIGHT KIT

MODEL: UVC01

Thank you for purchasing a Sealey product. Manufactured to a high standard, this product will, if used according to these instructions, and properly maintained, give you years of trouble free performance.

IMPORTANT: PLEASE READ THESE INSTRUCTIONS CAREFULLY. NOTE THE SAFE OPERATIONAL REQUIREMENTS, WARNINGS & CAUTIONS. USE THE PRODUCT CORRECTLY AND WITH CARE FOR THE PURPOSE FOR WHICH IT IS INTENDED. FAILURE TO DO SO MAY CAUSE DAMAGE AND/OR PERSONAL INJURY AND WILL INVALIDATE THE WARRANTY. KEEP THESE INSTRUCTIONS SAFE FOR FUTURE USE.



Refer to instructions



UVA protection glasses must be worn

1. SAFETY

1.1. ELECTRICAL SAFETY

WARNING! It is the user's responsibility to check the following:

✓ Check all electrical equipment and appliances to ensure that they are safe before using. Inspect power supply leads, plugs and all electrical connections for wear and damage. Sealey recommend that an RCD (Residual Current Device) is used with all electrical products.

ELECTRICAL SAFETY INFORMATION. It is important that the following information is read and understood:

✓ Ensure that the insulation on all cables and on the appliance is safe before connecting it to the power supply.

✓ Regularly inspect power supply cables and plugs for wear or damage and check all connections to ensure that they are secure.

IMPORTANT: Ensure that the voltage rating on the appliance suits the power supply to be used and that the plug is fitted with the correct fuse.

✗ **DO NOT** pull or carry the appliance by the power cable.

✗ **DO NOT** pull the plug from the socket by the cable.

If the cable or plug is damaged during use, switch off the electricity supply and remove from use.

Ensure that repairs are carried out by a qualified electrician.

The light source contained in this product shall only be replaced by the manufacturer or Sealey authorised service centre or a similar qualified person.

1.2. POWER CORD

✗ **DO NOT** use worn or damaged cables, plugs or connectors. Ensure that any faulty item is repaired or is replaced immediately by a qualified electrician.

1.2.1. The external flexible cable or cord of this transformer cannot be replaced; if the cord is damaged, the transformer shall be scrapped.

1.3. TRANSFORMER

1.3.1. The electrical transformer is a device that transfers electrical energy from one circuit to another at the same frequency. Its main function are: **1.** Voltage transformation: It can increase (step up) or decrease (step down) the voltage of an electrical signal.

1.4. GENERAL

✓ Inspect before every use; **DO NOT** use or charge if damaged or parts loose.

✗ **DO NOT** allow children to use the product.

WARNING! Keep away from children! This is not a toy.

WARNING! Children should be supervised in order to ensure that they do not play with the device.

WARNING! UVA protection glasses must always be worn when using this product.

✓ Ensure the product is fully charged before initial use.

✗ **DO NOT** charge in damp conditions.

✗ **DO NOT** operate in direct sun light or extreme temperature conditions.

✗ **DO NOT** turn the product on when it is being charged.

▲ **DANGER! DO NOT** shine directly into your, another person's or an animal's eyes.

✗ **DO NOT** point directly at uncovered skin.

WARNING! People with pacemakers should consult their physician(s) before use. Electromagnetic fields in close proximity to heart pacemaker could cause pacemaker interference or pacemaker failure.

✗ **DO NOT** handle or move the product whilst it is being charged.

✗ **DO NOT** use the product if you suspect that the battery or the light casing is damaged.

✗ **DO NOT** leave battery in a discharged state, recharge battery immediately. Before storage, fully recharge the battery, subsequently recharge the battery at least once every six months of non-use.

✗ **DO NOT** attempt to open, disassemble, modify or service the battery pack.

✗ **DO NOT** crush, puncture, short external contacts or dispose of in fire or water.

✗ **DO NOT** set light down on lens while on.

✓ Professional repair or replace only with the battery pack designated for this product.

✓ Only use included charging adaptor. Other adaptors may damage device or cause fire.

✓ Contains Li-Ion battery. Battery must be recycled or disposed of properly. **DO NOT** open, crush, heat above 60°C (140° F) or incinerate.

✓ If the electrolyte in the cells gets on your skin, thoroughly wash with soap and water. If it gets in your eyes, rinse thoroughly with cool water and seek immediate medical attention.

2. INTRODUCTION

Harnessing cutting-edge ultra-hi-flux UV-A LED technology, the rechargeable UV curing light is engineered with precision through custom-designed optics. It ensures enhanced efficiency and accelerated processes perfect for automotive repair and S.M.A.R.T repair tasks. Specifically designed for applications involving ultraviolet light curable fillers, base coats (primers), top coats, and clear coatings. Achieve quick results with up to 1s UV primer curing time. Emitting only UV-A, the curing light poses no risk of harmful UV-B & C exposure. Stay efficient with a built-in cooling system, ensuring consistent light output during extended use. Enjoy a more convenient recharging process with the wall-mounting charging station. Benefit from an efficient ultrasonic range finder function for precise measurements.

3. SPECIFICATION

Model No:	UVC01
Battery:	Li-ion 11.1V - 5200mAh, 57.72Wh
Charging Time:	3hours
Electrical Class:	Class III
IP Rating:	IP20
LED Type:	SMD LED
Length:	159*223*77mm
Nett Weight:	2.95kg
Operating Time:	90 Minutes in Total (Max 10 minutes each use)

NOTE: The curing time may vary according to the paint product type, working condition, the curing process and/or other factors.

4. CONTENTS

1	UV Curing Light
2	Universal Charger
3	Universal Charger Adapter
4	Wall-Mounted Charging Station
5	Storage Case

5. OPERATION

5.1. GENERAL OPERATION (fig.1)

❑ **WARNING!** Put the UV protection glasses on. **DO NOT** remove them while the product is in operation.

5.1.1. Press the 'main switch' for more than one second to power On or Off.

5.1.2. Squeeze the 'light trigger' to switch the light On or Off.

5.2. FAULTY TRIGGERING PROTECTION SYSTEM

5.2.1. Double click the 'main switch' to lock or unlock the light when the power and display screen is off.

5.3. SETTING PROCEDURE

5.3.1. Press the 'set' button to start the setting procedure, enter the minutes setting mode, minutes display will flash. Press the 'plus' or 'minus' button to adjust the time (max 10).

5.3.2. Press the 'set' button again to enter the seconds setting mode, seconds display keep flashing. Press the 'plus' or 'minus' button to adjust the seconds (max 60).

5.3.3. Press the 'plus' or 'minus' button longer to adjust faster. The maximum time can be set to '10:00' minutes.

5.3.4. Press the 'set' button, or 5 seconds without operation to confirm the setting procedure.

5.3.5. The countdown will start after the 'trigger' has been pressed.

5.3.6. The countdown will stop after the 'trigger' has been released.

The countdown will start to continue again once the 'trigger' has been pressed. **NOTE:** If the light was powered off, the last countdown setting will be remembered once the power has been turned on again.

5.3.7. The light will be automatically switched off when the remaining time of the display shows '00:00'.

5.3.8. The light will automatically power off after 60minutes without operation.

5.4. TEMPERATURE CONTROL AND PROTECTION SYSTEM

5.4.1. Press the 'set' button (1) for more than 5 seconds when the light is powered on. The display screen will display the current temperature (2). See fig.2.

5.4.2. The light has a built-in cooling system and will be automatically powered on after the temperature reaches higher than 40°C (104°F).




- 5.4.3. When the light temperature is in the range of 75°C (167°F) and below 90°C (194°F), the buzzer will sound and will give an alarm every 30 seconds. **NOTE:** The buzzer will stop when the countdown time is 00:00, or turned off manually.
- 5.4.4. When the light temperature is above 90°C (194°F) the light will automatically switch off and the cooling fans will keep running until the temperature falls below 50°C (122°F). **NOTE:** The light will not be able to work again until the temperature is lower than 50°C (122°F). **NOTE:** Switch off after each cure and let the light cool down thoroughly to ensure that your equipment cures at the best performance efficiency, and for a longer working life.
- 5.5. ULTRASONIC RANGE FINDER FUNCTION**
- 5.5.1. The light has a built-in ultrasonic range finder, ranging distance 4-400±3cm. The display screen will show **FFF** if distance is smaller than 4cm or longer than 400cm.

6. MOUNTING INSTALLATION

6.1. WALL MOUNTING (fig.3)

- 6.1.1. **IMPORTANT!** Ensure that the mounting surface is capable of supporting the weight of the light.
- ❑ **WARNING!** Before drilling ensure that there are no wires or water pipes in the area where the light is to be placed.
- 6.1.2. Mark out the wall using the two holes in the charging station as a template, use appropriate fixings (not supplied).

7. CHARGING PROCEDURE

- 7.1. Ensure the light is switched off before charging, place the light inside the wall-mounted charging station. **NOTE:** The light can also be charged directly via the charging port on the light. Fig.4.
- 7.2. Plug the charging station into a mains supply.
- 7.3. The digital battery indicator  on the display screen indicates the battery level during charging. The battery indicator will flash during charging, and the buzzer will sound 3 times when the charging has finished.
- ❑ **WARNING!** If the battery indicator on the light did not illuminate, remove the light from the battery charger and try again. Always use the recommended charger to charge the light. The use of NON-recommended chargers can lead to damage, or a fire.
- 7.3.1. Charge the light for 4-5 hours before using for the first time.
- 7.3.2. Fully charge the light before using, if it has been stored for more than 3 months.

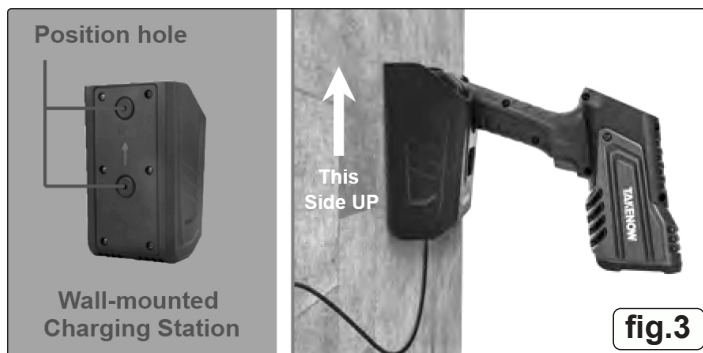


fig.3

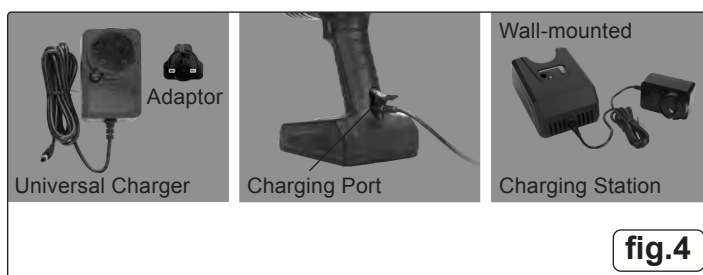


fig.4

8. MAINTENANCE

- ❑ **WARNING!** Remove from mains supply before carrying out any maintenance operation.
- 8.3.1. Servicing and maintenance must be carried out by a qualified person. Servicing carried out by non approved agents, or the use of non approved spares will invalidate the warranty. Contact your Sealey stockists for details.
- 8.1. CLEANING AND CARE**
- ❑ **WARNING!** You must make sure that the power supply is disconnected before cleaning.
- 8.1.1. After use wipe the light with a soft clean cloth. **DO NOT** clean the light with liquids or solvents.
- 8.2. STORAGE**
- 8.2.1. The equipment should be stored out of the reach of children and be kept secure from unauthorised use.
- 8.3. DISPOSAL**
- 8.3.1. Through years of normal wear, the light will eventually become unserviceable. When this happens ensure that it is disposed of in accordance with local authority regulations.



ENVIRONMENT PROTECTION

Recycle unwanted materials instead of disposing of them as waste. All tools, accessories and packaging should be sorted, taken to a recycling centre and disposed of in a manner which is compatible with the environment. When the product becomes completely unserviceable and requires disposal, drain any fluids (if applicable) into approved containers and dispose of the product and fluids according to local regulations.



REGISTER YOUR PURCHASE HERE



WEEE REGULATIONS

Dispose of this product at the end of its working life in compliance with the EU Directive on Waste Electrical and Electronic Equipment (WEEE). When the product is no longer required, it must be disposed of in an environmentally protective way. Contact your local solid waste authority for recycling information.



Li-ion

BATTERY REMOVAL

Under the Waste Batteries and Accumulators Regulations 2009, Jack Sealey Ltd are required to inform potential purchasers of products containing batteries (as defined within these regulations), that they are registered with Valpak's registered compliance scheme. Jack Sealey Ltd's Batteries Producer Registration Number (BPRN) is BPRN00705.

Note: It is our policy to continually improve products and as such we reserve the right to alter data, specifications and component parts without prior notice. Important: No Liability is accepted for incorrect use of this product.

Warranty: Guarantee is 12 months from purchase date, proof of which is required for any claim.

Sealey Group, Kempson Way, Suffolk Business Park, Bury St Edmunds, Suffolk. IP32 7AR



01284 757500



sales@sealey.co.uk



www.sealey.co.uk