



# BATTERY OPERATED/12V FUEL TRANSFER PUMP

MODEL NO: TP83

Thank you for purchasing a Sealey product. Manufactured to a high standard, this product will, if used according to these instructions, and properly maintained, give you years of trouble free performance.

**IMPORTANT:** PLEASE READ THESE INSTRUCTIONS CAREFULLY. NOTE THE SAFE OPERATIONAL REQUIREMENTS, WARNINGS & CAUTIONS. USE THE PRODUCT CORRECTLY AND WITH CARE FOR THE PURPOSE FOR WHICH IT IS INTENDED. FAILURE TO DO SO MAY CAUSE DAMAGE AND/OR PERSONAL INJURY AND WILL INVALIDATE THE WARRANTY. KEEP THESE INSTRUCTIONS SAFE FOR FUTURE USE.



Refer to  
instructions

## 1. SAFETY

### 1.1. GENERAL SAFETY

- ☐ **WARNING!** Read all safety warnings and instructions. Failure to follow the warnings and instructions may result in serious injury. Save all warnings and instructions for future reference.
- ☐ **WARNING! IMPROPER USE CAN CAUSE A DEATH OR SERIOUS INJURY**
- ☒ When pumping gasoline and flammable liquids, be alert to possible explosion hazard. Flammable fluid fumes and gasoline vapours can be an explosive hazard. Avoid sparks and use only with adequate ventilation.
- ☒ Wear ANSI-approved safety goggles and heavy-duty, chemical resistant work gloves during use.
- ☒ Use as intended only. Only use pump for transferring gasoline, non-portable water, light oil, and other non-corrosive liquids.
- ☒ Ensure that all connections are tight before use to eliminate leaking.
- ☒ Position batteries in proper polarity.
- ☒ Remove batteries when not in use.
- ☒ Know and obey local regulations for proper disposal of oil and gasoline. Dispose of properly in accordance with all local regulations.
- ☒ Follow all guidelines regarding materials being pumped, including SDS instructions and EPA regulations.
- ☒ Inspect before every use; **DO NOT** use if parts are loose or damaged.
- ☒ Ensure product labels and nameplates are maintained.
- ☒ Drain the pump of any remaining liquid after each use.
- ☒ Ensure left over fuel in the pump is removed after each use to preserve components.
- ☒ Detach the tank from the pump when moving to reduce risk of fuel leakage.
- ☐ **DO NOT** use for drinking water.
- ☐ **DO NOT** transfer fuel while vehicle or the vehicle's heater is ON. Risk of fire.
- ☐ **DO NOT** leave the pump unattended. Risk of oversupply of oil, a fire or accident.
- ☐ **DO NOT** alter or disassemble the pump. Risk of product malfunction.
- ☐ **DO NOT** place the pump in a wet area.
- ☐ **DO NOT** use deteriorated or aged fuels.
- ☐ **DO NOT** use for drinkable liquids, or with thinners, solvents, hot liquid, acetone, benzene, cresol, ethyl, phenol, methyl, ethyl concentrated caustic soda liquid, nitric acid, hydrochloric acid, sulfuric acid, etc.
- ☐ **DO NOT** drop the pump.
- ☐ **DO NOT** run the pump 'dry' or let the pump idle without transferring.
- ☐ **DO NOT** put the product in a non-ventilated area, direct sunlight, or next to heating appliances.
- ☐ **DO NOT** allow children to operate the product.
- ☐ **DO NOT** use the product on carpet, wood floor or combustible area. Risk of fire and damage from fuel spillage.
- ☐ **DO NOT** store the pump in enclosed airtight container.
- ☐ **DO NOT** use the product on an uneven surface. Risk of tipping.
- ☐ **DO NOT** pump corrosive liquids and drinking water.
- ☐ **DO NOT** allow children to play with or near this item. This product is not a toy.
- ☐ **DO NOT** use if the pump is hot.
- ☐ **DO NOT** pump used, dirty fuel.
- ☐ **DO NOT** use near open flame or heat sources.
- ☐ **DO NOT** turn the pump upside down after use.
- ☐ **DO NOT** mix old and new batteries.
- ☐ **DO NOT** mix alkaline, standard (carbon-zinc), or rechargeable (nickel-cadmium) batteries.
- ☐ **DO NOT** use swollen or leaking batteries.
- ☐ **DO NOT** operate when tired or when under the influence of drugs or medication.

## 2. INTRODUCTION

ATEX approved so suitable for petrol, diesel, kerosene and other liquids. Manual nozzle allows for precise control. No-kink hose construction for smooth flow. Powered using 4 x AA batteries (not supplied) and 12v cable with battery clips. Can deliver up to 12L/min. Supplied with three drum adaptors.

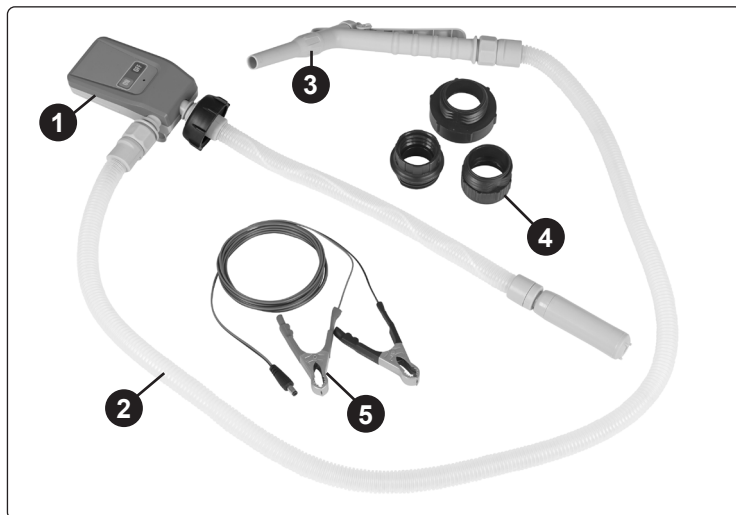
### 3. SPECIFICATION

Model No:..... TP83  
Length:.....Intake hose: 480mm  
.....Discharge hose: 1300mm  
Nett Weight: ..... 0.64kg  
Input Power Supply: .. 2AA x2 or 4 Battery (Not Included)

..... DC 12V (By DC 12V Cable)  
.....AC115V/230V (via AC-DC adaptor)  
Applications: ..... petrol, diesel, kerosene, light oils,  
..... Non-potable water

**NOTE:** when an AC to DC adapter is used for power supply, the fuel pump flow is maximum and most stable.

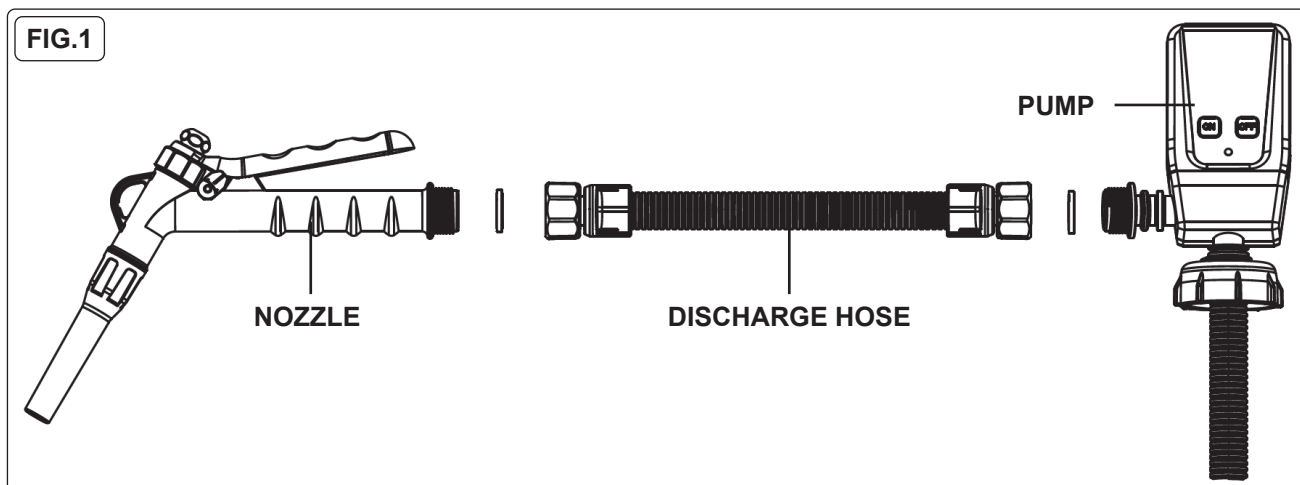
### 4. CONTENTS



#	DESCRIPTION
1	Pump Assembly
2	Discharge Hose
3	Nozzle
4	Drum Adaptors x 3
5	12V Cable with Battery Clips

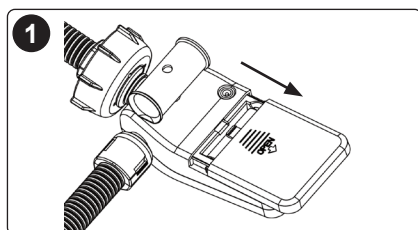
### 5. ASSEMBLY

#### 5.1. PUMP ASSEMBLY

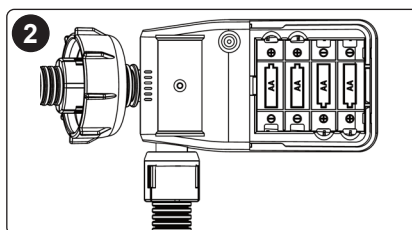


Connect one end of the discharge hose to the pump and the other end to the nozzle via the adjustable nuts. Ensure that the gaskets are installed correctly to avoid leakage.

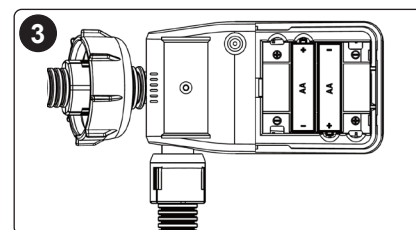
#### 5.2. BATTERY INSTALLATION



Push the battery cover in the direction of the arrow to open.



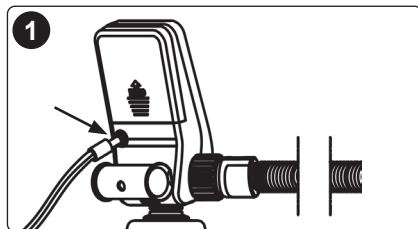
Insert 4 AA batteries according to polarity (+/- signs).



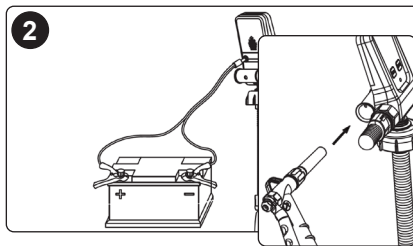
The pump can operate with 2 AA batteries, in the case of an emergency.

**NOTE:** batteries should be replaced when the unit fails to operate, or performance of the unit decreases. Ensure batteries are replaced at the same time. Use the same brand/type for best performance. Batteries can begin to discharge if they are stored for a long period of time. Check the expiration dates of batteries to ensure they are within date.

### 5.3. HOW TO USE THE 12V BATTERY POWER SUPPLY



Insert the terminal of the DC power cable into the port of the pump.



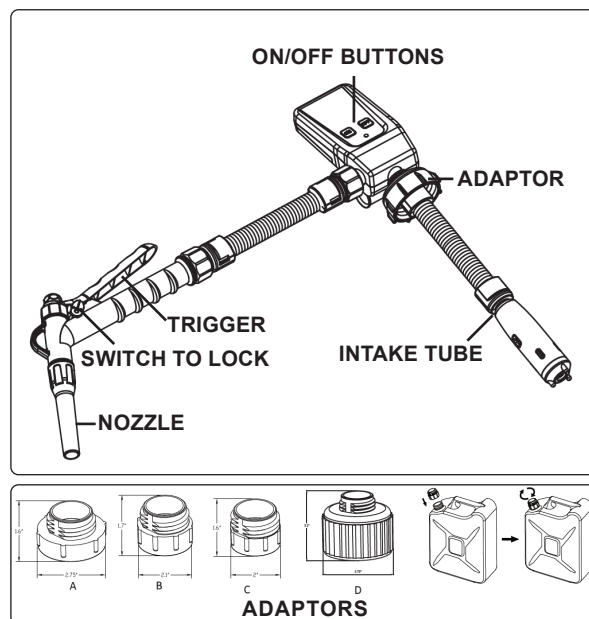
Connect to a 12V battery observing correctly polarity: RED (positive +), BLACK (negative -).

**NOTE:** the pump will not function if poles are connected inversely.

## 6. OPERATION

**IMPORTANT:** ensure you have read and understood all safety and maintenance instructions before using this device.

- 6.1. Insert the intake tube into the liquid to be transferred.
- 6.2. Ensure the intake tube is fully submerged. **DO NOT** run the unit dry.
- 6.3. Screw the appropriate adaptor onto the supply tank (if applicable).
- 6.4. Place the nozzle in the receiving container (not included).
- 6.5. Ensure the receiving container is higher than the battery housing. **DO NOT** lift up or push down on the pump while it is attached to the fuel tank.
- 6.6. Press the ON button to start the pump. The LED light will illuminate.
- 6.7. Squeeze the trigger to pump fluid from the supply tank into the receiving container. **NOTE:** the nozzle can be locked open by rotating the switch on the handle. This must be unlocked before the transfer has completed to avoid spills or overfilling.
- 6.8. When the transfer is complete, release the trigger and turn the switch OFF.
- 6.9. Keep the pump upright after use. Place the nozzle in its storage compartment on the back of the unit.
- 6.10. Rinse unit with water and wipe dry.
- 6.11. Remove batteries and store in a clean, dry location out of reach of children.



## 7. MAINTENANCE

### 7.1. GENERAL

Maintenance is to be performed when necessary to maintain correct and safe performance. Before conducting any maintenance work, turn off the product. All maintenance should be performed by an authorised service centre. Electrical repairs should **ONLY** be made by a qualified electrician. **DO NOT** use a faulty unit. Contact an authorised service centre for repair.

### 7.2. CLEANING

Keep the unit free from dirt and grease. Turn off before cleaning. Regularly clean with a damp cloth. **DO NOT** clean with abrasive materials or harsh chemicals. **DO NOT** spray water on the product, or allow water enter the battery compartment or internal components. **DO NOT** open enclosures to clean electrical parts.

### 7.3. STORAGE

When the pump is not being used for long periods of time, take the pump out of the tank. Make sure no remaining fuel is in the hose. Wipe the pump with a cloth. Remove batteries before storing the pump. **DO NOT** store the pump in enclosed airtight container.

## 8. TROUBLESHOOTING

Before contacting an authorised service centre, please review the troubleshooting table below.

PROBLEM	POSSIBLE CAUSE	POSSIBLE SOLUTION
Pump does not operate even after pressing ON.	Batteries may be incorrectly placed.	Ensure the batteries are correctly installed according to their polarity.
	Batteries are depleted.	Replace the batteries.
	The power supply is insufficient.	Check whether the power supply is correct.
	The battery clamp is not connected properly.	Ensure clamps are correctly connected when using a 12V battery.
Pump performance is low	Batteries are depleted.	Replace the batteries.
	The receiving tank is higher than the supplying tank.	Ensure that the receiving tank is not higher than the supplying tank.
	12V power supply is insufficient.	Replace the battery and connect the 12V power supply again.
Pump starts after pressing the ON button, but then stops unexpectedly.	Blocked filter.	Clean foreign material from the filter.

Pump immediately stops after pressing the ON button or before receiving tank is full.	Batteries are depleted.	Replace the batteries.
Pump running, but no fuel delivery after pressing the ON button	The impeller is stuck or blocked by impurities.	Remove pump and clean impurities.



#### ENVIRONMENT PROTECTION

Recycle unwanted materials instead of disposing of them as waste. All tools, accessories and packaging should be sorted, taken to a recycling centre and disposed of in a manner which is compatible with the environment. When the product becomes completely unserviceable and requires disposal, drain any fluids (if applicable) into approved containers and dispose of the product and fluids according to local regulations.



REGISTER YOUR  
PURCHASE HERE



#### WEEE REGULATIONS

Dispose of this product at the end of its working life in compliance with the EU Directive on Waste Electrical and Electronic Equipment (WEEE). When the product is no longer required, it must be disposed of in an environmentally protective way. Contact your local solid waste authority for recycling information.

**Note:** It is our policy to continually improve products and as such we reserve the right to alter data, specifications and component parts without prior notice.

**Important:** No Liability is accepted for incorrect use of this product.

**Warranty:** Guarantee is 12 months from purchase date, proof of which is required for any claim.

**Jack Sealey Ltd t/a Sealey Group**, Kempson Way, Suffolk Business Park, Bury St Edmunds, Suffolk, IP32 7AR UK

**Jack Sealey (EU) Ltd t/a Sealey Group**, Farney Street, Carrickmacross, Co. Monaghan, A81 PK68 Ireland

**Tel:** 01284 757500 • **Email:** sales@sealey.co.uk • **Web:** www.sealey.co.uk