

Thank you for purchasing a Sealey product. Manufactured to a high standard this product will, if used according to these instructions and properly maintained, give you years of trouble free performance.



IMPORTANT:

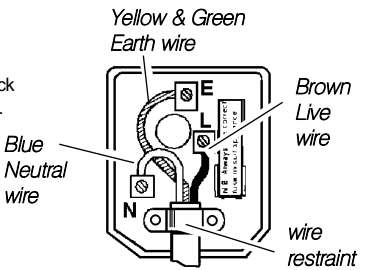
PLEASE READ THESE INSTRUCTIONS CAREFULLY. NOTE THE SAFE OPERATIONAL REQUIREMENTS, WARNINGS AND CAUTIONS. USE THE PRODUCT CORRECTLY AND WITH CARE FOR THE PURPOSE FOR WHICH IT IS INTENDED. FAILURE TO DO SO MAY CAUSE DAMAGE OR PERSONAL INJURY, AND WILL INVALIDATE THE WARRANTY. PLEASE KEEP INSTRUCTIONS SAFE FOR FUTURE USE.

1. SAFETY INSTRUCTIONS

1.1. ELECTRICAL SAFETY. ⚠ WARNING! It is the user's responsibility to read, understand and comply with the following:

You must check all electrical equipment and appliances to ensure they are safe before using. You must inspect power supply leads, plugs and all electrical connections for wear and damage. You must ensure the risk of electric shock is minimised by the installation of appropriate safety devices. An RCCB (Residual Current Circuit Breaker) should be incorporated in the main distribution board. We also recommend that an RCD (Residual Current Device) is used with all electrical products. It is particularly important to use an RCD together with portable products that are plugged into an electrical supply not protected by an RCCB. If in doubt consult a professional electrician. You may obtain a Residual Current Device by contacting your Sealey dealer. **You must** also read and understand the following instructions concerning electrical safety.

- 1.1.1. The **Electricity At Work Act 1989** requires all portable electrical appliances, if used on a business premises, to be tested by a qualified Electrician at least once a year by using a Portable Appliance Tester (PAT).
- 1.1.2. The **Health & Safety at Work Act 1974** makes owners of electrical appliances responsible for the safe condition of the appliance, and the safety of the appliance operator. **If in doubt about electrical safety, contact a qualified electrician.**
- 1.1.3. Ensure the insulation on all cables and the product itself is safe before connecting to the mains power supply. See 1.1.1. & 1.1.2. above and use a Portable Appliance Tester (PAT).
- 1.1.4. Ensure that cables are always protected against short circuit and overload.
- 1.1.5. Regularly inspect power supply, leads, plugs and all electrical connections for wear and damage, especially power connections, to ensure that none are loose.
- 1.1.6. **Important:** Ensure the voltage marked on the product is the same as the electrical power supply to be used, and check that plugs are fitted with the correct capacity fuse. A 13Amp plug may require a fuse smaller than 13Amps for certain products.
- 1.1.7. DO NOT pull or carry the powered appliance by its power supply lead.
- 1.1.8. DO NOT pull power plugs from sockets by the power cable.
- 1.1.9. DO NOT use worn or damaged leads, plugs or connections. Immediately replace or have repaired by a qualified Electrician. A U.K. 3 pin plug with ASTABS approval is fitted. In case of damage, cut off and fit a new plug according to the following instructions (discard old plug safely).



(UK only - see diagram at right). **Ensure the unit is correctly earthed via a three-pin plug.**

- a) **Connect the GREEN/YELLOW earth wire to the earth terminal 'E'.**
 - b) **Connect the BROWN live wire to live terminal 'L'.**
 - c) **Connect the BLUE neutral wire to the neutral terminal 'N'.**
- After wiring, check there are no bare wires, that all wires have been correctly connected and that the wire restraint is tight.**

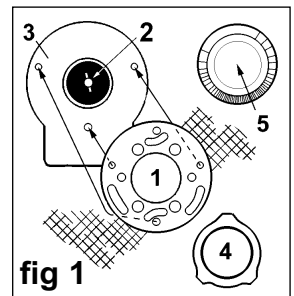
THIS PRODUCT MUST BE FITTED WITH A 3 AMP FUSE

Double insulated products are often fitted with live (BROWN) and neutral (BLUE) wires only. Double insulated products are always marked with this symbol. **To re-wire, connect the brown & blue wires as indicated above. DO NOT connect the brown or blue to the earth terminal.**

- 1.1.10. Some products require more than a 13Amp electrical supply. In such a case, **NO** plug will be fitted. **You must** contact a qualified Electrician to ensure a 30 amp fused supply is available. We recommend you discuss the installation of an industrial round pin plug & socket with your electrician.
- 1.1.11. **Cable extension reels.** When a cable extension reel is used it should be fully unwound before connection. A cable reel with an RCD fitted is recommended since any product which is plugged into the cable reel will be protected. The section of the cable on the cable reel is important. We recommend that at least 1.5mm² section cable but to be absolutely sure that the capacity of the cable reel is suitable for this product and for others that may be used in the other output sockets, we recommend the use of 2.5mm² section cable.

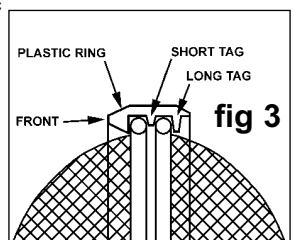
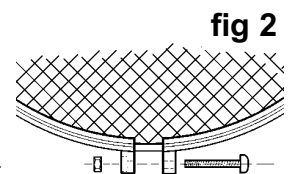
1.2 GENERAL SAFETY

- ✓ Disconnect the fan from the mains power when not in use, and before servicing or performing any maintenance.
- ✓ Use the fan in dry areas only. Do not use in wet or high condensation locations such as bathrooms, showers, or pools.
- ⚠ **WARNING!** If a fan falls into water, immediately switch off and disconnect from the mains power supply. Do not touch the fan until the mains power supply has been disconnected.
- ✓ Keep the fan clean and maintained in good condition (use an authorised service agent).
- ✓ Use recommended parts only (non genuine parts may be dangerous, and will invalidate your warranty).
- ✗ DO NOT use an extension cord unless it has been approved by an electrical authority.
- ✗ DO NOT locate the fan where it may be knocked over.
- ✗ DO NOT expose the elderly or children to a continuous air current for long periods of time.
- ✗ DO NOT insert any objects through the fan guard. ✗ DO NOT cover the fan.
- ✗ DO NOT immerse the fan in water or any other liquid. ✗ DO NOT allow children to operate the fan.
- When not in use store in a safe, dry, childproof location. ✗ DO NOT use the fan outdoors



2. ASSEMBLY

- 2.1. **Assembly.** Remove large plastic hub nut from the end of the motor shaft by turning it clockwise. Remove the protective transparent plastic cover from the motor shaft. Unscrew the grille lock nut from the motor cover by turning it anticlockwise.
- 2.3. **Fitting rear fan guard.** Identify rear fan guard by location holes in centre plate (fig 1-1) and place guard over motor spindle (fig 1-2) and fit it onto the three location pins on motor cover (fig 1-3). Secure the back guard with the grille lock nut (fig 1-4).
- 2.4. **Fitting the fan.** Slide the fan onto the motor shaft until it comes to rest against the pin which is pushed through the shaft. Rotate the fan slightly until the pin comes to rest in the shallow groove in the back of the fan. Now take the large plastic hub nut (fig 1-5) and thread it onto the end of the motor shaft by turning it **anticlockwise**. Hold one of the fan blades with one hand and tighten the nut down onto the fan to hold it in place.
- 2.5. **Fitting the front fan guard to the rear fan guard.** The front guard and the rear guard are held together within a plastic clamping ring (see part No.30 overleaf). On the inside of the plastic ring there are a series of tags which hold the rims of the guards in place. (fig.3) Where the ring is split a screw and nut is provided to clamp the two guards securely together. (see fig.2)
- 2.6. Assemble the plastic ring around the rear fan guard ensuring that the rim of the guard rests between the short central tags and the longer rear tags (see fig.3). Hold the ring together at the split point with finger and thumb. Take the front guard with the other hand and rest it within the front edge of the plastic ring. Ease the tension on the plastic ring with your fingers and gently push the front guard into the ring so that it rests between the short tags and the front inside edge of the ring. Once you are sure that the guards are correctly held, insert the screw and nut into the clamping lugs and tighten until the guards are securely held. (see fig. 2)



3. WALL MOUNTING

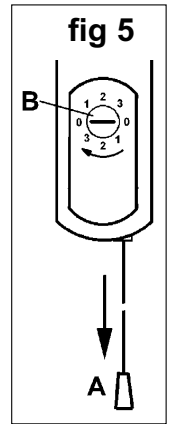
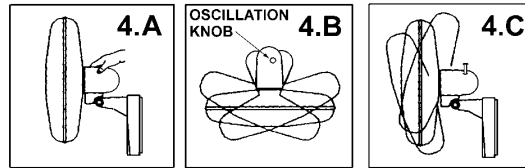
- 3.1 **Wall mounting the fan.** The fan should be mounted so that both the pull cord and the oscillation knob can easily be reached. The fan should also be mounted close enough to the mains supply to avoid the power cable being stretched. Ensure that the mounting surface is sound and can permanently support the weight of the fan. Check the wall for hidden pipes and cables before drilling the mounting holes.
- 3.2 Hold the wall mounting bracket (see part No. 35 below) in place on the wall and check that it is level. Mark the three drilling positions through the holes in the bracket. Choose suitable wall plugs and drill three holes accordingly. Fix the bracket in place with the screws provided.
- 3.3 Lift the fan to the bracket and allow the bracket to pass into the slot provided in the backing plate (part No.7). Slide the fan onto the bracket until the four feet on the plate are in firm contact with the wall.
- 3.4 Route the power cable to the mains supply and secure to the mounting surface with cable clips.

4. FAN OPERATION

WARNING! Ensure you read, understand and apply the safety instructions in Part 1 before using the fan.

- 4.1 **ON-OFF / Speed Control.** Plug the fan into the mains power supply .
- 4.2 The pull string (see fig.5-A) is used to select the speed of the fan and to switch it ON and OFF. When the line on the rotary indicator (see fig.5-B) points to both "0" markings the fan is OFF. When the string is pulled the fan will start and the rotary indicator will move round one position to select low speed (1). To select medium speed (2) pull the string again. To select fast speed (3) pull the string again. To switch the fan OFF from any speed repeatedly pull the string until the rotary indicator reaches the "0" position.
- 4.3 **To make the fan oscillate.** Push down oscillation knob on top of motor casing. (see fig.4.B) To stop the fan oscillating, pull knob up.
- 4.4 **Air flow direction.** The direction of air flow can be adjusted either vertically or horizontally.

The vertical adjustment is spring assisted and has several preset positions. To adjust the fan up or down, take hold of the motor body (as shown in 4.A) and move the fan through the pre-set positions until you achieve the angle you require (see 4.C). To fix the air flow direction from the side first pull up the oscillation knob to stop the fan moving. Take hold of the motor body as shown in 4.A below and turn the fan to the desired angle (see 4.B below). As you turn the unit a clicking sound will be heard and a small degree of resistance will be felt.

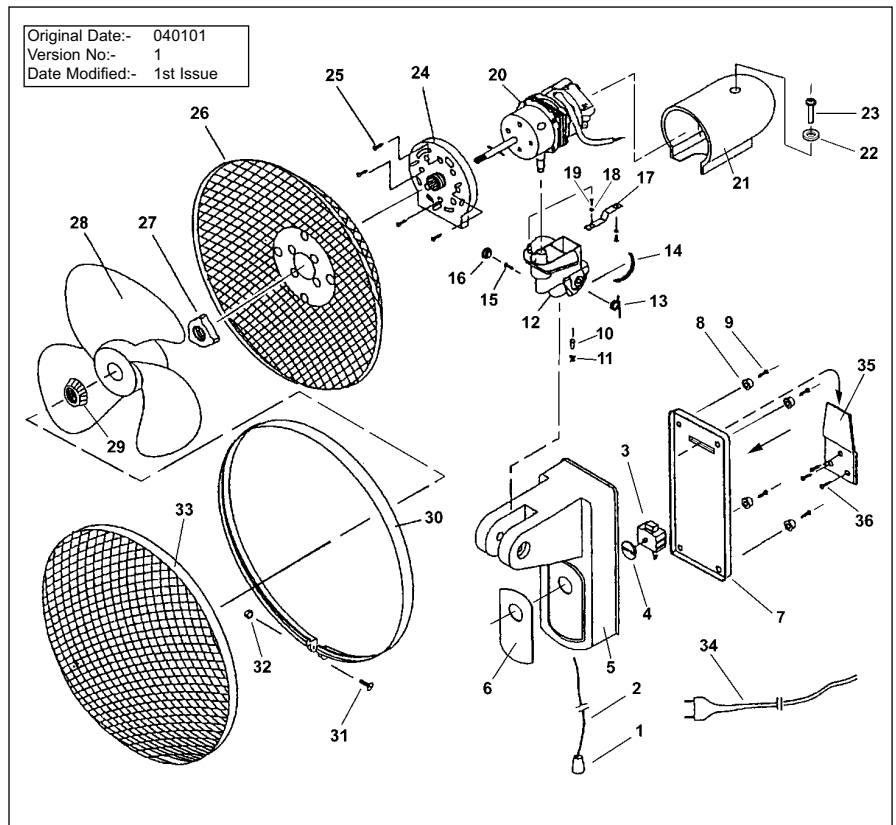


5. MAINTENANCE

- 5.1 Always remove the plug from the power supply before cleaning the fan. Clean with a soft, dry or slightly moistened cloth.

6. PARTS LIST SWF16

ITEM	PART NO	DESCRIPTION
1	SWF16/01	SWITCH KNOB
2	SWF16/02	STRING PULL
3	SWF16/03	SWITCH
4	SWF16/04	ROTARY INDICATOR
5	SWF16/05	BASE
6	SWF16/06	OVERLAY
7	SWF16/07	BASE COVER
8	SWF16/08	RUBBER FOOT
9	SWF16/09	SCREW
10	SWF16/10	SPRING
11	SWF16/11	BALL
12	SWF16/12	JOINT
13	SWF16/13	SPRING
14	SWF16/14	POSITIONING PLATE
15	SWF16/15	SCREW
16	SWF16/16	WASHER
17	SWF16/17	LEVER
18	SWF16/18	WASHER
19	SWF16/19	SCREW
20	SWF16/20	MOTOR
21	SWF16/21	MOTOR HOUSING
22	SWF16/22	SPRING WASHER
23	SWF16/23	PULL KNOB
24	SWF16/24	MOTOR COVER
25	SWF16/25	SCREW
26	SWF16/26	REAR GRILLE
27	SWF16/27	GRILLE LOCK NUT
28	SWF16/28	FAN
29	SWF16/29	HUB
30	SWF16/30	GRILLE CLAMP
31	SWF16/31	SCREW
32	SWF16/32	NUT
33	SWF16/33	FRONT GRILLE
34	SWF16/34	POWER LEAD
35	SWF16/35	HANGING PLATE
36	SWF16/36	SCREW



Declaration of Conformity We, the sole importer into the UK, declare that the product listed below is in conformity with the following EEC standards and directives

WALL FAN Model SWF16

EN 60335-2-80
89/336/EEC Electromagnetic Compatibility
73/23/EEC Low Voltage Directive



The construction file for these products are held by the Manufacturer and may be inspected on request by contacting Jack Sealey Ltd

Signed by Mark Sweetman

4th January 2001

For Jack Sealey Ltd.
Sole importer into the UK
of Sealey Power Products

NOTE: It is our policy to continually improve products and as such we reserve the right to alter data, specifications and component parts without prior notice.

IMPORTANT: No liability is accepted for incorrect use of product. **WARRANTY:** Guarantee is 12 months from purchase date, proof of which will be required for any claim. **INFORMATION:** Call us for a copy of our latest catalogue on 01284 757525 and leave your full name and address including your postcode.



Sole UK Distributor
Sealey Group,
Bury St. Edmunds, Suffolk.



01284 757500



01284 703534

E-mail: sales@sealey.co.uk