



POWER PRODUCTS

INSTRUCTIONS FOR : **TOWER FAN**

Model No:

STF29H

Thank you for purchasing a Sealey product. Manufactured to a high standard this product will, if used according to these instructions and properly maintained, give you years of trouble free performance.

IMPORTANT: PLEASE READ THESE INSTRUCTIONS CAREFULLY. NOTE THE SAFE OPERATIONAL REQUIREMENTS, WARNINGS AND CAUTIONS. USE THE PRODUCT CORRECTLY AND WITH CARE FOR THE PURPOSE FOR WHICH IT IS INTENDED. FAILURE TO DO SO MAY CAUSE DAMAGE OR PERSONAL INJURY, AND WILL INVALIDATE THE WARRANTY. PLEASE KEEP INSTRUCTIONS SAFE FOR FUTURE USE.

1. SAFETY INSTRUCTIONS

1.1. ELECTRICAL SAFETY. ⚠ WARNING! It is the user's responsibility to read, understand and comply with the following:

You must check all electrical equipment and appliances to ensure they are safe before using. You must inspect power supply leads, plugs and all electrical connections for wear and damage. You must ensure the risk of electric shock is minimised by the installation of appropriate safety devices. An RCCB (Residual Current Circuit Breaker) should be incorporated in the main distribution board. We also recommend that an RCD (Residual Current Device) is used with all electrical products. It is particularly important to use an RCD together with portable products that are plugged into an electrical supply not protected by an RCCB. If in doubt consult a professional electrician. You may obtain a Residual Current Device by contacting your Sealey dealer. **You must** also read and understand the following instructions concerning electrical safety.

- 1.1.1. The **Electricity At Work Act 1989** requires all portable electrical appliances, if used on a business premises, to be tested by a qualified Electrician at least once a year by using a Portable Appliance Tester (PAT).
- 1.1.2. The **Health & Safety at Work Act 1974** makes owners of electrical appliances responsible for the safe condition of the appliance, and the safety of the appliance operator. **If in doubt about electrical safety, contact a qualified electrician.**
- 1.1.3. Ensure the insulation on all cables and the product itself is safe before connecting to the mains power supply. See 1.1.1. & 1.1.2. above and use a Portable Appliance Tester (PAT).
- 1.1.4. Ensure that cables are always protected against short circuit and overload.
- 1.1.5. Regularly inspect power supply, leads, plugs and all electrical connections for wear and damage, especially power connections, to ensure that none are loose.
- 1.1.6. **Important:** Ensure the voltage marked on the product is the same as the electrical power supply to be used, and check that plugs are fitted with the correct capacity fuse. A 13Amp plug may require a fuse smaller than 13Amps for certain products (*subject to 1.1.10. below*) see fuse rating at right.

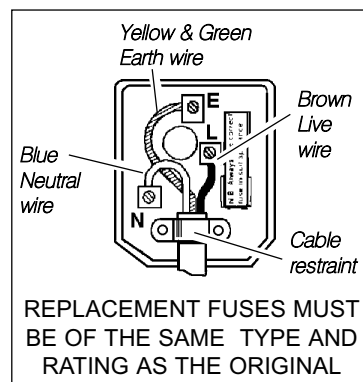
- 1.1.7. DO NOT pull or carry the powered appliance by its power supply lead.
- 1.1.8. DO NOT pull power plugs from sockets by the power cable.
- 1.1.9. DO NOT use worn or damage leads, plugs or connections. Immediately replace or have repaired by a qualified Electrician. A U.K. 3 pin plug with ASTA/BS approval is fitted. In case of damage, cut off and fit a new plug according to the following instructions (discard old plug safely).

(UK only - see diagram at right). **Ensure the unit is correctly earthed via a three-pin plug.**

- a) **Connect the GREEN/YELLOW earth wire to the earth terminal 'E'.**
 - b) **Connect the BROWN live wire to live terminal 'L'.**
 - c) **Connect the BLUE neutral wire to the neutral terminal 'N'.**
- After wiring, check there are no bare wires, that all wires have been correctly connected and that the wire restraint is tight.**

Double insulated products are often fitted with live (BROWN) and neutral (BLUE) wires only. Double insulated products are always marked with this symbol . To re-wire, connect the brown & blue wires as indicated above. DO NOT connect the brown or blue to the earth terminal.

- 1.1.10. Some products require more than a 13Amp electrical supply. In such a case, NO plug will be fitted. **You must** contact a qualified Electrician to ensure a 30 amp fused supply is available. We recommend you discuss the installation of a industrial round pin plug & socket with your electrician.
- 1.1.11. **Cable extension reels.** When a cable extension reel is used it should be fully unwound before connection. A cable reel with an RCD fitted is recommended since any product which is plugged into the cable reel will be protected. The section of the cable on the cable reel is important. We recommend that at least 1.5mm² section cable but to be absolutely sure that the capacity of the cable reel is suitable for this product and for others that may be used in the other output sockets, we recommend the use of 2.5mm² section cable.



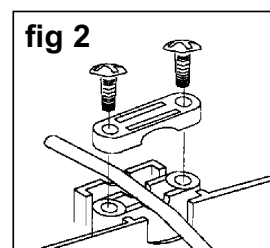
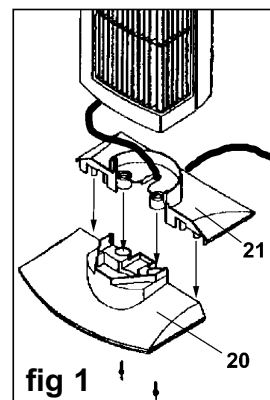
1.2 GENERAL SAFETY

- ✓ Disconnect the fan from the mains power when not in use, and before servicing or performing any maintenance.
- ✓ Use the fan in dry areas only. Do not use in wet or high condensation locations such as bathrooms, showers, or pools.
- ⚠ **WARNING!** If a fan falls into water, immediately switch off at the mains and disconnect from the mains power supply. Do not touch the fan until the mains power supply has been disconnected.
- ✓ Always disconnect the fan from the power supply when moving it from one location to another.
- ✓ Keep the fan clean and maintained in good condition (use an authorised service agent).
- ✓ Use recommended parts only (non genuine parts may be dangerous, and will invalidate your warranty).
- x DO NOT stand the fan where it may be knocked over or off a surface, or where the lead may cause a person to trip.
- x DO NOT use an extension cord unless it has been approved by an electrical authority.
- x DO NOT insert any objects through the fan guard.
- x DO NOT immerse the fan in water or any other liquid.
- ✓ When not in use store in a safe, dry, childproof location.
- x DO NOT allow children to operate the fan.
- x DO NOT use the fan outdoors.
- x DO NOT cover the fan.

2. ASSEMBLY

Please note that all item numbers used in figs 1 & 2 are taken from the parts diagram overleaf.

- 2.1. Your Tower Fan is supplied fully assembled with the exception of the base which comes in two halves. Please follow the assembly instructions carefully.
- 2.2. **Assembling the base.** Lay the main unit on its side on a clean firm surface with the control panel lid closed and the mains cable uncoiled. Identify the rear part of the base (fig1-21) and place it the right way up close to the bottom of the fan. Pass the mains lead into the large notch in the centre of the base. The lead should enter the notch from above and go underneath the base to come out at the back edge.
- 2.3. Place the front part of the base (fig1-20) in front of the rear half. Then assemble the two halves together by lifting the rear part and sliding its front edge downwards onto the rear edge of the front half as shown in fig1. The circular bosses on the rear half of the base will drop into circular collars on the front half.
- 2.4. Now lift the bottom end of the fan up and push the assembled base onto the base housing and fix with the two screws provided. (The base housing may rotate slightly whilst you are doing this.)
- 2.5. Lay the mains cable into the clamp groove at the back of the base and secure as shown in fig2.



3. OPERATION

- 3.1 Do not operate the fan without the base attached. Do not operate the fan lying on its side.
- 3.2 Place the fan in the area where it is to be used using the recessed carrying handle at the back of the unit. Plug the unit into the mains supply and lift up the clear cover to access the controls.
- 3.3 **Turning on and selecting a speed.** To operate the fan you must turn the rotary timer switch (fig3-E) to the "ON" position even if you do not intend to use the timer. The fan will come on when you select a speed by using one of the three push buttons (fig3-D). No.1 is a low speed ; No.2 is medium and No.3 is high speed. To turn the fan off press the "0" button.
- 3.4 **Oscillation.** During use the fan can be made to turn from side to side. To commence oscillation push the oscillation button down (fig3-F). To stop oscillation push the button so that it comes up again into its off position.
- 3.5 **Timer.** The rotary timer control (fig3-E) allows you to set a fixed operation time for the unit of up to two hours. Turn the timer knob clockwise until it points to the desired number of minutes you wish the fan to run. Now select the fan speed and the unit will come on and run for the period of time that you have set. The timer control will then have returned to the "OFF" position. You must turn the knob to the "ON" position if you wish to use the fan without the timer.

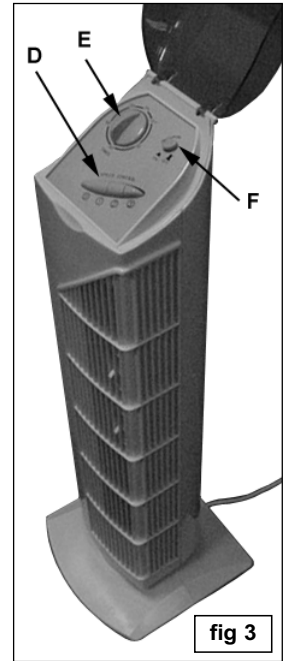


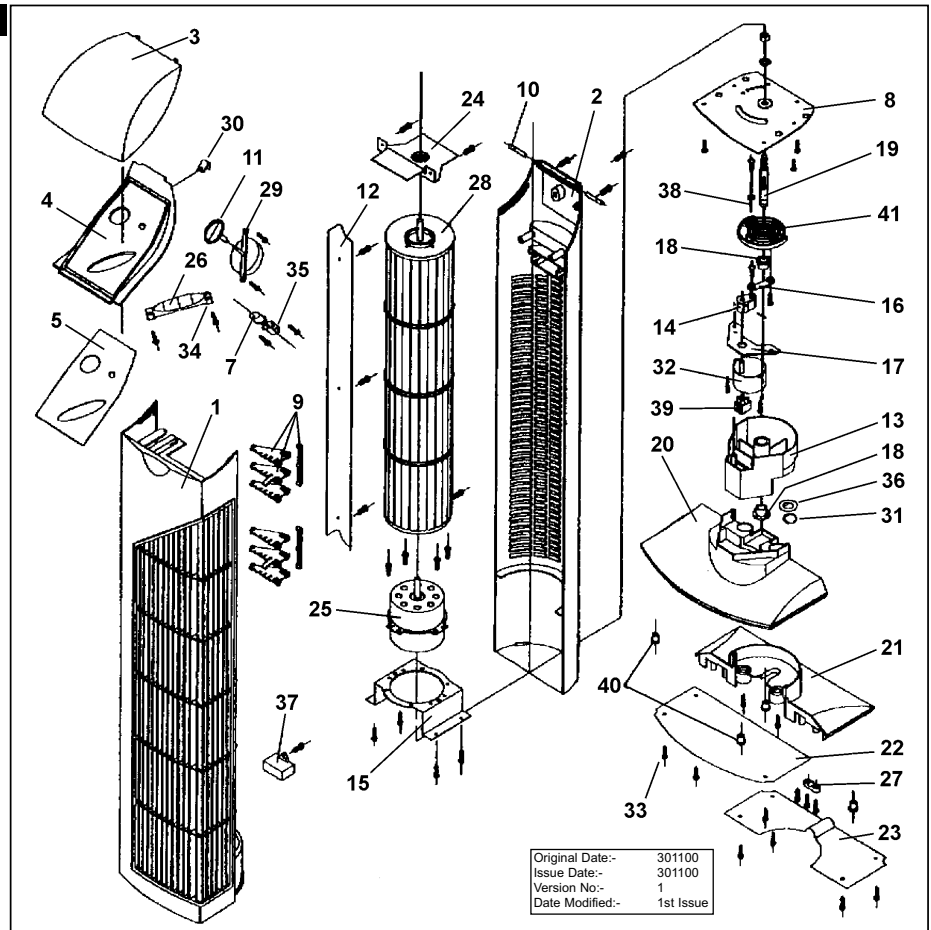
fig 3

4. MAINTENANCE

- 4.1 If any problems are experienced with the unit take it to an authorised service centre for repair or maintenance. Do not attempt to service the unit yourself. This can only be done by an authorised service agent such as your local Sealey dealer or any agent qualified to undertake electrical repairs.
- 4.2 If the unit requires external cleaning make sure it is switched off and unplugged from the mains supply. Use a soft tissue or cloth for general cleaning. To remove more persistent dirt or grime wipe down with a cloth that has been dampened with warm soapy water. Do not use any solvents (such as thinners) as these may damage the plastic casing.

5. PARTS LIST

ITEM	PART NO	DESCRIPTION
1	STF29H01	FRONT HOUSING
2	STF29H02	REAR HOUSING
3	STF29H03	LID
4	STF29H04	PANEL
5	STF29H04	DECORATIVE PLATE
6	STF29H06	POWER CORD
7	STF29H07	PUSH SWITCH BUTTON
8	STF29H08	SET PLATE
9	STF29H09	SHUTTERS
10	STF29H10	HINGE PINS
11	STF29H11	TIMER SWITCH KNOB
12	STF29H12	METAL PLATE
13	STF29H13	BASE HOUSING
14	STF29H14	CONNECTING RUBBER
15	STF29H15	MAIN MOTOR BRACKET
16	STF29H16	LINK ROD
17	STF29H17	SYNC. MOTOR BRACKET
18	STF29H18	SHAFT BUSHING
19	STF29H19	METAL PLATE SHAFT
20	STF29H20	BASE (B)
21	STF29H21	BASE (A)
22	STF29H22	BASE PLATE (B)
23	STF29H23	BASE PLATE (A)
24	STF29H24	BLADE SUPPORT PLATE
25	STF29H25	MAIN MOTOR
26	STF29H26	PIANO SWITCH BUTTON
27	STF29H27	CORD CLAMP
28	STF29H28	FAN BLADE
29	STF29H29	TIMER
30	STF29H30	LOCK PLATE
31	STF29H31	E - RING
32	STF29H32	SYNCHRONISED MOTOR
33	STF29H33	SCREW
34	STF29H34	PIANO SWITCH
35	STF29H35	OSCILLATION SWITCH
36	STF29H36	RING
37	STF29H37	CAPACITOR
38	STF29H38	RING
39	STF29H39	TERMINAL BLOCK
40	STF29H40	CONNECTING BUSH
41	STF29H41	ROTATE PLATE



Original Date:- 301100
 Issue Date:- 301100
 Version No:- 1
 Date Modified:- 1st Issue

Declaration of Conformity We, the sole importer into the UK, declare that the product listed below is in conformity with the following EEC standards and directives

TOWER FAN Model STF29H
 EN 60335-2-80
 89/336/EEC Electromagnetic Compatibility
 73/23/EEC Low Voltage Directive



The construction file for this product is held by the Manufacturer and may be inspected, by a national authority, upon request to Jack Sealey Ltd

Signed by Mark Sweetman

30th November 2000

For Jack Sealey Ltd.
 Sole importer into the UK
 of Sealey Power Products

NOTE: It is our policy to continually improve products and as such we reserve the right to alter data, specifications and component parts without prior notice.
IMPORTANT: No liability is accepted for incorrect use of product. **WARRANTY:** Guarantee is 12 months from purchase date, proof of which will be required for any claim. **INFORMATION:** Call us for a copy of our latest catalogue on 01284 757525 and leave your full name and address including your postcode.



Sole UK Distributor
 Sealey Group,
 Bury St. Edmunds, Suffolk.



01284 757500



01284 703534

E-mail: sales@sealey.co.uk