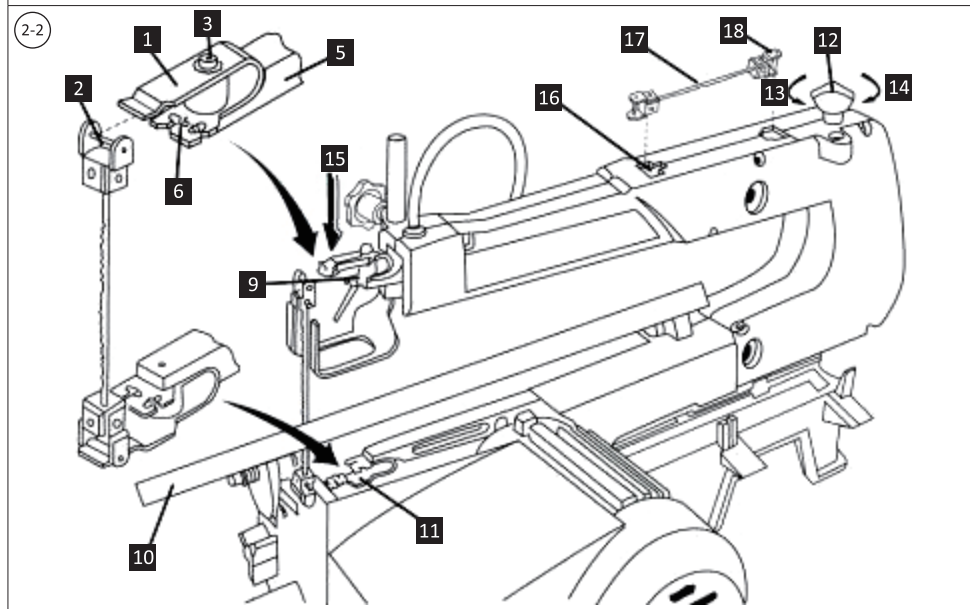
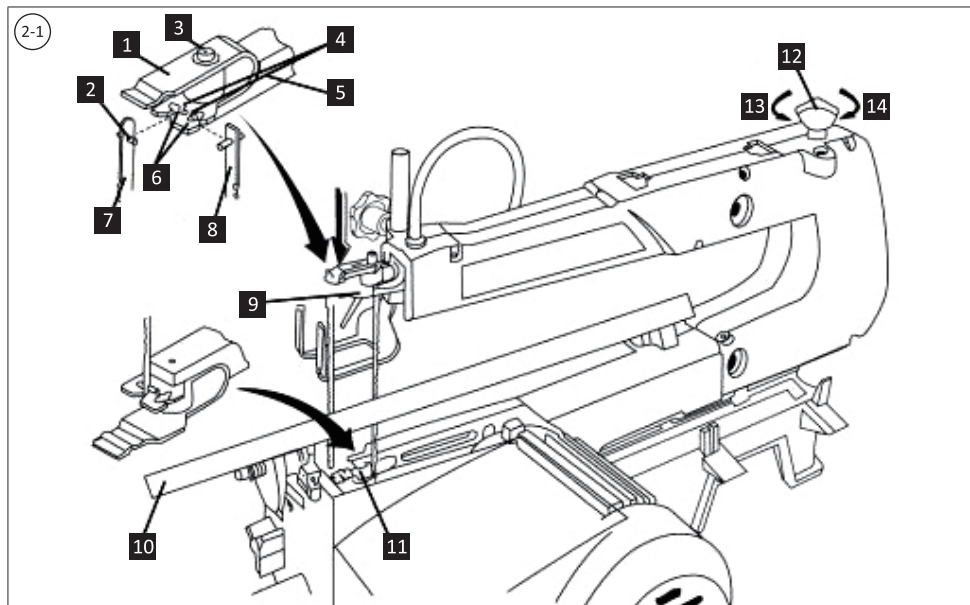
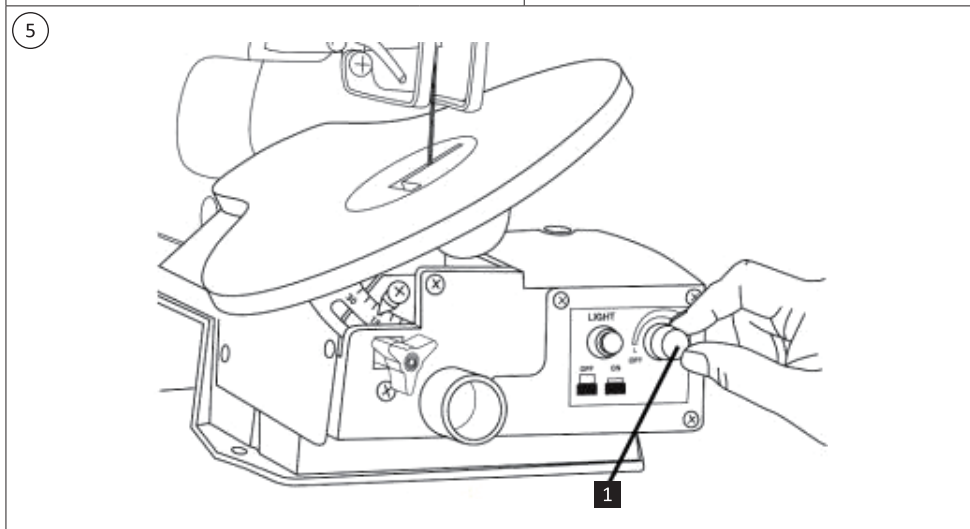
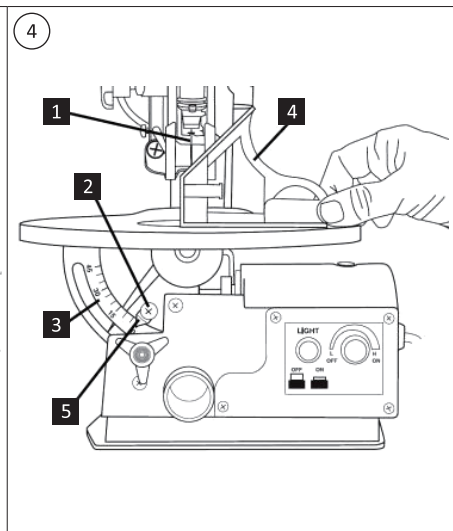
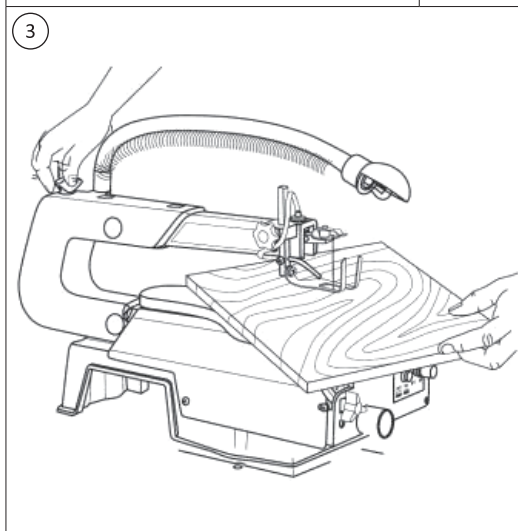
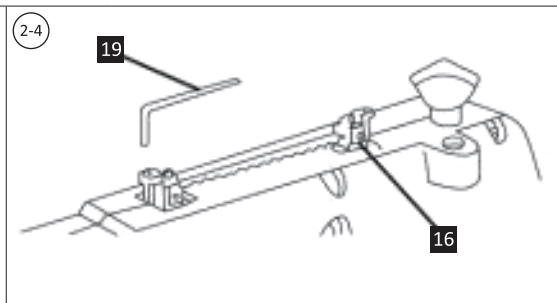
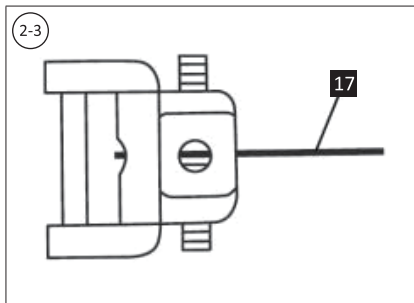


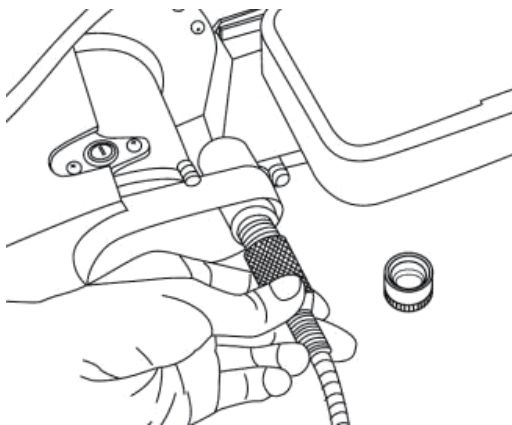


SSA16LVR

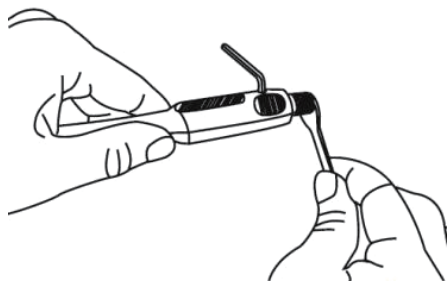




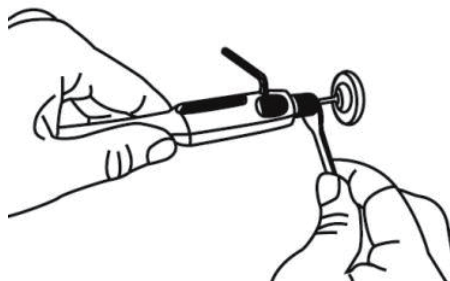
6



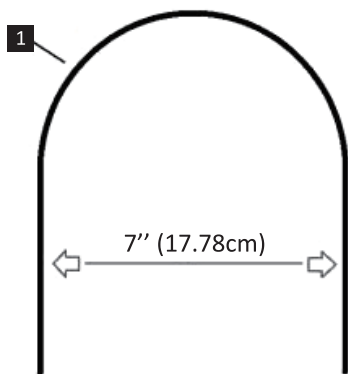
7



8



9



1 General warnings

Read all the instructions and warnings carefully before using this product. Failure to follow warnings and instructions can result in severe injury, death, or property damage. Before installation, check if all accessories are complete and without damage. If not, contact customer service. Keep these instructions in a safe place for future reference. Use this product with its original parts only. vidaXL cannot be held responsible in the event of damage or injury due to incorrect use of this product. The information contained in this manual is believed to be correct at the time of printing. However, vidaXL reserve the right to change or modify any of the specifications without notice or obligation to update existing units. Repairs should only be carried out by a specialist or a professional and experienced technician. Never attempt to repair the product yourself.

2 Introduction

Intended Use: This machine is used for cutting wood. Please read this manual and safety instructions before use. Save the instructions for future reference.

3 Symbol clarification

Explanations for marking (See image 1) 1. WEEE with bar. 2. Reading the instruction manual/booklet before starting work or before operating equipment or machinery 3. Wearing eye protection 4. Wearing ear protection 5. Wearing a face mask This designation means that this product must not be disposed of with other household waste in the European Union. Please be aware that VidaXL is making a return and collection system available to you for discarding these products. This possibility is free of cost. When you recycle WEEE or batteries/accumulators you are helping to prevent that the products are not incinerated or sent to landfills. Therefore, you are helping to minimize the potential negative impact on human health and the environment. Responsible recycling can increase the reuse of material resources and avoid potential damage to the environment or health from uncontrolled waste disposal.

4 Warnings and personal safety

WARNING ! When using electric tools basic safety precautions should always be followed to reduce the risk of fire, electric shock and personal injury including the following. • Read all these instructions before attempting to operate this product and save these instructions for future reference. • Remove the plug before carrying out any adjustment, servicing or maintenance. • Keep work area clear. Cluttered areas and benches invite injuries. • Do not expose tools to rain. • Do not use tools in damp or wet locations. • Keep work area well lit. • Do not use tools in the presence of flammable liquids or gases. • Avoid body contact with earthed or grounded surfaces. • Do not let persons, especially children, not involved in the work touch the tool or the extension cord and keep them away from the work area. • It will do the job better and safer at the rate for which it was intended. • Do not force small tools to do the job of a heavy duty tool. • Do not use tools for unintended purposes. For example: Do not use circular saws to cut tree limbs or logs. • Do not wear loose clothing or jewellery; they can be caught in moving parts. • Non-skid footwear is recommended when working outdoors. • Wear protective hair covering to contain long hair. • Use safety glasses. • Use face or dust mask if working operations create dust. • If the external tools are provided for the dust extraction and collection, ensure these are connected and used properly. • Never pull the cord to disconnect it from the socket. Keep the cord away from heat, oil and sharp edges. • Where possible use clamps or a vice to hold the work. It is safer than using your hand. • Keep proper footing and balance at all times. • Keep cutting tools sharp and clean for better and safer performance. • Follow instruction for lubricating and changing accessories. • Inspect tool cords periodically and if damaged have them repaired by an authorized service facility. • Inspect extension cords periodically and replace if damaged. • Keep handles dry, clean and free from oil and grease. • When not in use, before servicing and when changing accessories such as blades, bits and cutters, disconnect tools from the power supply. • Form the habit of checking to see that keys and adjusting wrenches are removed from the tool before turning it on. • Ensure switch is in "OFF" position when plugging in. • When tools are used outdoors, use only extension cords intended for use outdoors and so marked. • Watch what you are doing at all times. Use common sense and do not operate the tool when you are tired or under the influence of drugs, alcohol and medication. • Before further use of the tool, carefully check to determine if it operates properly and performing its intended function. • Check for alignment and binding of moving parts, breakage of any parts, mounting and any other conditions that may affect its operation. • A guard or other part that is damaged should be properly repaired or replaced by an authorized service centre unless otherwise indicated in this instruction manual. • Have defective switches replaced by an authorized

service centre. • Do not use the tool if the switch does not turn ON and OFF. • The use of any accessory or attachment other than one recommended in this instruction manual may present a risk of personal injury. • This electric tool complies with the relevant safety rules. Repairs should only be carried out by qualified persons using original spare parts, otherwise this may result in considerable danger to the user. **Warning: The vibration emission during actual use of the power tool can differ from the declared total value depending on the ways in which the tool is used; it is important to identify safety measures to protect the operator that are based on an estimation of exposure in the actual conditions of use the declared vibration total value has been measured in accordance with a standard test method and may be used for comparing one tool with another the declared vibration total value may also be used in a assessment of exposure.**

5 Operation Guide

5.1 Installing Pin Blades (See Image 2-1)

1	Adaptor Guard	8	Blade Positioned for side cutting
2	Blade Pin	9	Upper Inner Blade Holder
3	Cap Screw	10	Table Tilted for picture clarity
4	Blade Slots	11	Lower Inner Blade Holder
5	Arm	12	Blade Tension Knob
6	Pin Recesses	13	Loosen
7	Blade Positioned for front cutting	14	Tighten

Ensure the Blade teeth are pointing down. 1. Lower the Blade through the access hole in the tilting table top. 2. Hook the Blade Pin into the pin recess on the lower Blade Holder. For boards over 405mm length, install the Blade with the teeth sideways using the sideways recess. This will turn the saw into a "Band-saw". 3. Apply slight downward pressure onto the upper Blade Holder and hook the Blade into the pin recess. Release the pressure. 4. Tighten the Blade using the Blade Tension Knob to eliminate any slack in the Blade. Turn the Blade Tension Knob one full clockwise turn until all slacks are removed. **5.2 Installing Plain-End Blades (Sideways Cutting)** (See Image 2-2)

15	Slight Pressure Here	17	Blade
16	Blade Length Gauge	18	Blade Adapter

Ensure the Blade teeth are pointing down. 1. Adjust one set screw on each adaptor until it covers approximately half the hole. 2. Loosen the other set screw on each adaptor and slide one adaptor onto each end of the Blade. (See Image 2-3) 3. Place the adaptors into the mould on the scroll saw arm and adjust the Blade length using the Blade Length Gauge. (See Image 2-4)

19	Wrench
----	--------

4. Secure the second set screw on each adaptor, then lock the Blade in place. 5. Rotate the Blade Tension Knob anti-clockwise to release the tension. 6. Lower the bottom adaptor through the access hole in the table top. Hook the lower adaptor onto the outer section of the lower Blade holder. 7. Slide the top adaptor onto the pin recess between the adaptor guard and the outer section of the upper Blade holder. 8. Tighten the Blade Tension Knob one full clockwise turn and remove all slacks. **5.3 Making an Interior Scroll Cut** (See image 3) One of the features of this saw is that it can be used to make scroll cuts on the inner surface area of a board without breaking or cutting through the edge of the work-piece. 1. Drill a 6mm hole in the centre of your work-piece. 2. Place the work-piece onto the scroll saw and align the new hole with the easy access hole in the table top. 3. Insert the Blade through the new hole in your work-piece. 4. Lower the drop foot until it rests just on top of your work-piece. You can begin working. 5. Once the work is finished, remove the Blades before moving the work-piece. **5.4 Making Angled Cuts** (See Image 4)

1	Blade	4	Square
2	Pointer Adjustment Screw	5	Pointer
3	Degree Scale		

1. Loosen the Locking Knob so that the table can be tilted between

angles 0°-45°. 2. Using the degree scale, determine the angle which you would like to table to be set at. 3. Tighten the Locking Knob to secure the table and the desired angle. 4. Adjust the drop foot so that it is parallel to the tabletop. **5.5 Turning the Scroll Saw On** (See Image 5)

1	On/Off and Variable Speed Switch
---	----------------------------------

1. Press the green On (I) button to power the sander. Press the red Off (O) button to turn it off. 2. When using the variable speed dial, wait for the speed to level before use. **5.6 Installing the Flexi-shaft and Carving Burrs** 1. Turn the scroll saw Off (O) and unplug it from the mains power. 2. Remove the dust cover and screw on the Flexi-shaft. (See Image 6) 3. Insert the Allen Key in the hole of the hand-piece to stop the shaft rotating. 4. Loosen the Collet nut using the wrench provided. (See Image 7) 5. Insert your selected carving burr into the hand-piece and tighten the Collet nut using the wrench. Remove the wrench from the hand-piece. (See Image 8) **5.7 Using the Flexi-shaft** (See Image 9)

1	Flexi-shaft cable
---	-------------------

Follow these guidelines when operating the Flexi-shaft accessory to prevent the inner cable from snapping. 1. It is advised to secure the

work-piece in place before using the Flexi-shaft. 2. Do not force the carving burr into the work-piece as it will stall the inner cable of the Flexi-shaft and snap. Allow the carving burr to cut the work-piece naturally. 3. Allow the speed of the shaft to level before engaging your work-piece. If the Flexi-shaft is rotating too slowly, it will get stuck in the work-piece and the inner cable will snap. 4. Move the hand-piece in a slow, smooth motion. "Scribbling" in the wood will cause the burr to get stuck and snap the inner cable. Do not bend the Flexi-shaft past a bend radius of 7"(17.78cm). If the Flexi-shaft is bent beyond this radius, the inner cable will not be able to rotate and will snap.

6 Maintenance and cleaning

6.1 Daily • Vacuum or use an airline to blow out any dust or debris left on the saw after use. Dust and debris which gets left on the scroll saw will cease the motor and can rust the table surface. • Lubricate the arm bearings after every 10 hours use of the scroll saw. Complete a re-oil after 50 hours of use or if the bearing begins to make a "squeaking" noise. Read instructions on how to lubricate bearings. 1. Turn the saw on its side. 2. Squirt a generous amount of SAE 20 oil around the shaft and bronze bearing. 3. Let the oil soak in overnight, leaving the saw on its side. 4. The next day, repeat these instructions for the opposite side of the saw.

6.2 Troubleshooting:

Problem	Possible cause	Solution
Blades keep breaking	Wrong Tension	Adjust Blade tension using Blade Tension Knob.
	Overworking Blade	Reduced feed rate
	Wrong Blade application	Use narrow Blades for softwoods, thicker Blades for hardwoods.
	Twisting Blade in wood	Feed the work-piece straight, do not apply sideways pressure.
	Incorrect TPI Blade	Install correct Blade.
Vibration (It is natural for this saw to vibrate slightly. Use this guide if vibration has worsened).	Improper mounting	Install more padding between the saw base and your workbench. See "operation Guide".
	Unsuitable mounting surface	Mount the saw onto a more heavy duty workbench.
	Loose mounting	Tighten mounting bolts.
	Loose motor	Tighten motor mounting screws.
Blade Run out (Blade not in line with arm motion).	Blade holders not aligned	Loosen the cap screws holding the Blade to the upper and lower arms. Adjust the position of the Blade and re-tighten the cap screws.

7 Technical specifications

Item number	SSA16LVR
Voltage/Frequency	230~240V / 50Hz
Motor power	70W (S1)
	90W (S2 30min)
	125W (S2 5 min)
Scroll Saw Variable Speed	550-1600 RPM
Flexible Shaft Variable Speed	1650-4800 RPM
Blade Stroke	20mm
Maximum Cutting Thick-ness	52mm
Maximum Cutting Capacity	405mm
Blade Length	127mm
Weight	14.73 Kg