

## RECHARGEABLE WET/DRY SHAVER/TRIMMER 2HR FAST CHARGE

Thank you for purchasing a Sealey Product. Manufactured to a high standard this product will, if used according to these instructions and properly maintained, give you years of trouble free performance.



**IMPORTANT: PLEASE READ THESE INSTRUCTIONS CAREFULLY. NOTE THE SAFE OPERATIONAL REQUIREMENTS, WARNINGS AND CAUTIONS. USE THIS PRODUCT CORRECTLY AND WITH CARE FOR THE PURPOSE FOR WHICH IT IS INTENDED. FAILURE TO DO SO MAY CAUSE DAMAGE AND/OR PERSONAL INJURY AND WILL INVALIDATE THE WARRANTY. PLEASE KEEP INSTRUCTIONS SAFE FOR FUTURE USE.**

### 1. SAFETY INSTRUCTIONS

- ✓ Familiarise yourself with the applications, limitations and potential hazards peculiar to the shaver.
- ❑ **WARNING!** Disconnect the shaver from the mains charger before changing accessories, servicing or performing any maintenance.
- ✓ Replace or repair damaged parts. *Use authorised parts only. Unauthorised parts may be dangerous and will invalidate the warranty.*
- ✓ Keep the shaver clean for best and safest performance.
- x DO NOT use the shaver for any purpose other than that for which it is designed.
- x DO NOT use the shaver if any parts are missing or damaged as this may cause failure and/or personal injury.
- ✓ When not in use, clean thoroughly and store in a safe childproof location.

### 2. INTRODUCTION & SPECIFICATION

#### 2.1 Description

The Shaver/Trimmer has twin oscillating cutter heads for a close, smooth shave. The shaver is washable, when detached from charger cord and can also be used with shaving cream or foam. The trimmer is for tidying sideburns and removing long hairs. Complete with 2hr charger, cleaning brush, pouch and spare foil.



#### 2.2 Specification

Full Charging Time: ..... 2 hr

Charger: .....230Vac/3Vdc

Spare Parts		Diagram Labels	
Part No.	Description		
SRS07.01	Spare Foil	Cover	Spare Foil
SRS07.02	Razor Blade	Foil	Cleaning Brush
SRS07.C	Charger	Foil Holder	Pouch
		Razor Blade	Charger
		Release Buttons	
		Body	
		On/Off Switch	
		Charging Indicator	

### 3. INSTRUCTIONS

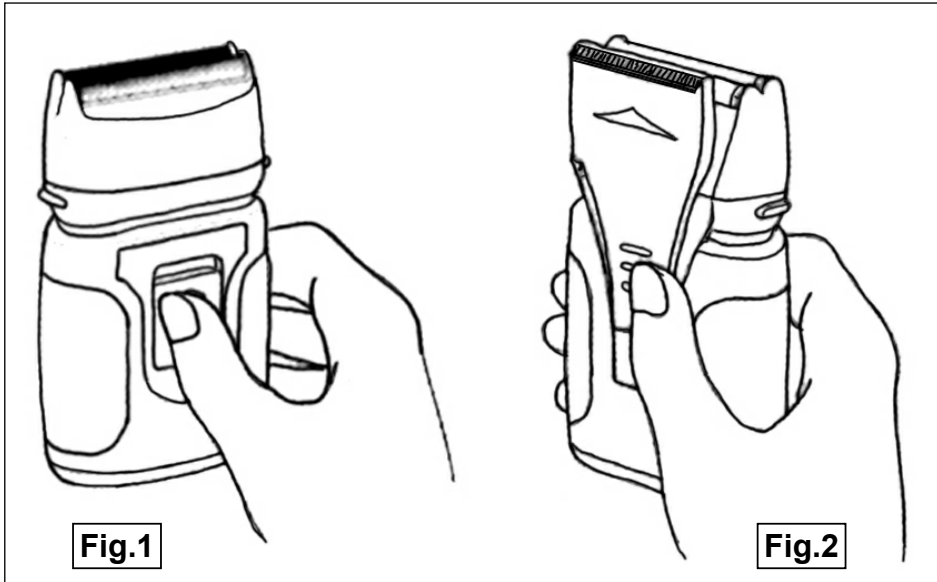
#### 3.1. Charging the shaver

- 3.1.1. If shaver is not charged, plug the charger into a suitable electrical socket and plug the 2 pin socket into the shaver. Turn power on at the mains socket switch and the charging indicator on the shaver will light. Charge for 2 hours (the shaver can be left connected for up to five hours, but do not exceed this as battery life will be shortened). For optimal battery life, the shaver should be left for 2 hours after fully charging, before being used. The battery should be fully discharged before re-charging.

**Note! The charging light indicates connection to mains power only, it does not go out when fully charged. Do not overcharge as this may damage the battery and invalidate your warranty.**

#### 3.2. Using the shaver

- 3.2.1. Remove the cutter cover and turn shaver on by sliding On/Off switch upwards (Fig.1).  
3.2.2. Hold the shaver at 90° to the skin and gently touch the skin with the shaver head.  
3.2.3. Move the shaver in the opposite direction to hair growth for best results.  
3.2.4. To ensure the closest shave, stretch the skin tightly with hand.  
3.2.5. Shaver can also be used in conjunction with shaving foam or cream. Ensure shaver head is constantly rinsed in clean water during shaving to keep cutting head clean.  
3.2.6. To use trimmer, push trimming attachment fully upwards (Fig.2) and hold cutting head at right angles to skin before touching the skin with the cutter head. Trim as necessary.



### 4. CARE OF SHAVER

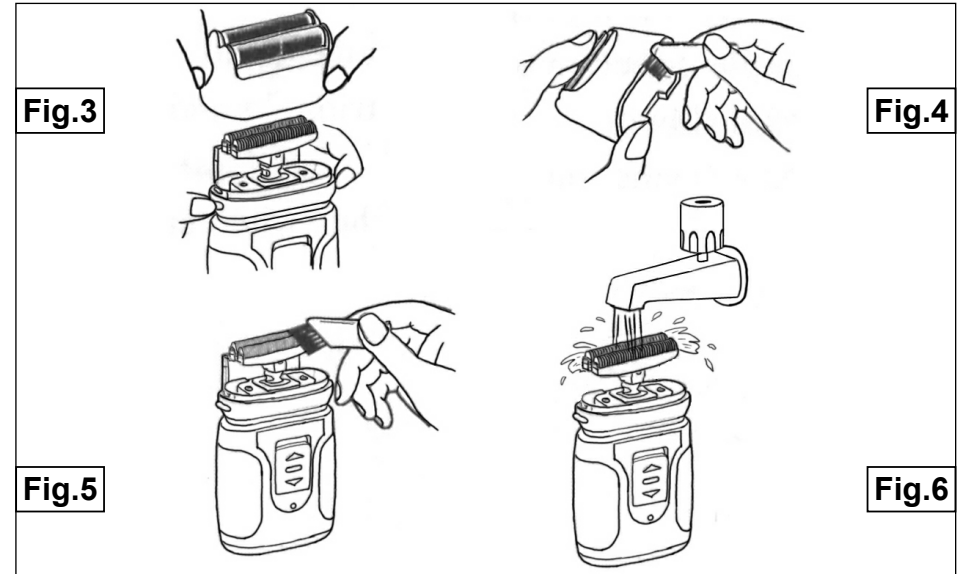
Always disconnect the shaver from the charger before carrying out any cleaning or maintenance.

#### 4.1. Cleaning the shaver

- 4.1.1. Pinch the two head unit release buttons inwards and remove the head unit (Fig.3).  
4.1.2. Carefully brush away any hair, debris etc. from the cutting heads, the foil covers and the body of the shaver (Figs.4 and 5).  
4.1.3. Clean around the cutting blades of the trimmer.  
4.1.4. The shaver can also be cleaned and rinsed with water (Fig.6).

#### 4.2. Maintenance

- 4.2.1. To change the foil, remove the head unit by pinching the two head unit release buttons inwards and then lifting away (Fig.3).  
4.2.2. Using a small screwdriver or similar, carefully prise away the foil from the head unit, starting at one end.  
4.2.3. To insert the new foil, carefully bend it backwards and gently push it into the clip holders in the head unit. Do not use excessive force.  
4.2.4. Replace the head unit on the shaver.



#### Environmental Protection.



Recycle unwanted materials instead of disposing of them as waste. All tools, accessories and packaging should be sorted, taken to a recycle centre and disposed of in a manner which is compatible with the environment.



When the product is no longer required, it must be disposed of in an environmentally protective way.

Rechargeable battery is recyclable. Take to your local recycling centre to be disposed of properly. Do not incinerate battery as it may explode when exposed to fire. Do not attempt to open battery pack.

### 5. DECLARATION OF CONFORMITY

**Declaration of Conformity** We, the sole importer into the UK, declare that the product listed here is in conformity with the following standards and directives.

The construction file for this product is held by the manufacturer and may be inspected, by a national authority, upon request to Jack Sealey Ltd.

**Rechargeable Wet/Dry Shaver/Trimmer**  
**2hr Fast Charge**  
**Model No: SRS07**

79/23/EEC Low Voltage Directive  
89/336/EEC EMC Directive  
2002/95/EC RoHS Directive  
2002/96/EC WEEE Directive  
93/68/EEC CE Marking Directive

Signed by Mark Sweetman



20th March 2007

For Jack Sealey Ltd. Sole importer into the UK of  
Sealey Power Products.

**NOTE:** It is our policy to continually improve products and as such we reserve the right to alter data, specifications and component parts without prior notice.

**IMPORTANT:** No liability is accepted for incorrect use of product.

**WARRANTY:** Guarantee is 12 months from purchase date, proof of which will be required for any claim.

**INFORMATION:** For a copy of our latest catalogue and promotions call us on 01284 757525 and leave your full name and address, including postcode.

**SEALEY POWER PRODUCTS**

Sole UK Distributor  
Sealey Group,  
Bury St. Edmunds, Suffolk.



01284 757500



www.sealey.co.uk



01284 703534



sales@sealey.co.uk