


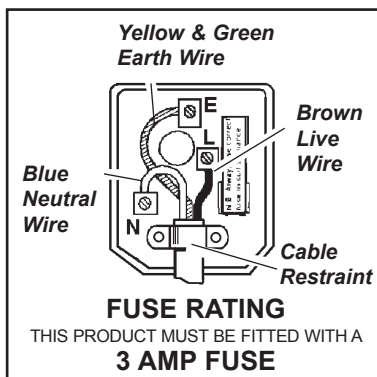
Thank you for purchasing a Sealey product. Manufactured to a high standard this product will, if used according to these instructions and properly maintained, give you years of trouble free performance.



**IMPORTANT: PLEASE READ THESE INSTRUCTIONS CAREFULLY. NOTE THE SAFE OPERATIONAL REQUIREMENTS, WARNINGS AND CAUTIONS. USE THE PRODUCT CORRECTLY AND WITH CARE FOR THE PURPOSE FOR WHICH IT IS INTENDED. FAILURE TO DO SO MAY CAUSE DAMAGE AND/OR PERSONAL INJURY AND WILL INVALIDATE THE WARRANTY. PLEASE KEEP INSTRUCTIONS SAFE FOR FUTURE USE.**

### 1. SAFETY INSTRUCTIONS

- 1.1. ELECTRICAL SAFETY.**  **WARNING! It is the user's responsibility to read, understand and comply with the following:** You must check all electrical equipment and appliances to ensure they are safe before using. You must inspect power supply leads, plugs and all electrical connections for wear and damage. You must ensure the risk of electric shock is minimised by the installation of appropriate safety devices. An RCCB (Residual Current Breaker) should be incorporated in the main distribution board. We also recommend that an RCD (Residual Current Device) is used with all electrical products. It is particularly important to use an RCD with portable products that are plugged into an electrical supply not protected by an RCCB. If in doubt consult a qualified electrician. You may obtain a Residual Current Device by contacting your Sealey dealer. You must also read and understand the following instructions concerning electrical safety.
- 1.1.1. **The Electricity At Work Act 1989** requires all portable electrical appliances, if used on business premises, to be tested by a qualified electrician, using a Portable Appliance Tester (PAT), at least once a year.
- 1.1.2. The **Health & Safety at Work Act 1974** makes owners of electrical appliances responsible for the safe condition of the appliance and the safety of the appliance operator. **If in any doubt about electrical safety, contact a qualified electrician.**
- 1.1.3. Ensure the insulation on all cables and the product itself is safe before connecting to the mains power supply. See 1.1.1. & 1.1.2. above and use a Portable Appliance Tester (PAT).
- 1.1.4. Ensure that cables are always protected against short circuit and overload.
- 1.1.5. Regularly inspect power supply, leads, plugs for wear and damage and all electrical connections to ensure that none is loose.
- 1.1.6. **Important:** Ensure the voltage marked on the product is the same as the electrical power supply to be used, and check that plugs are fitted with the correct capacity fuse. A 13 amp plug may require a fuse smaller than 13 amps for certain products, see fuse rating below.
- 1.1.7. DO NOT pull or carry the appliance by its power supply lead.
- 1.1.8. DO NOT pull power plug from socket by the power cable.
- 1.1.9. DO NOT use worn or damaged leads, plugs or connections. Immediately replace or have repaired by a qualified electrician. A U.K. 3 pin plug with ASTA/BS approval is fitted. In case of damage, cut off and fit a new plug according to the following instructions (discard old plug safely). (UK only - see diagram below). **Ensure the unit is correctly earthed via a three-pin plug.**
- Connect the green/yellow earth wire to the earth terminal 'E'.
  - Connect the brown live wire to live terminal 'L'.
  - Connect the blue neutral wire to the neutral terminal 'N'.
  - After wiring, check that there are no bare wires, that all wires have been correctly connected, that the cable outer insulation extends beyond the cable restraint and that the restraint is tight. Double insulated products are fitted with live (BROWN) and neutral (BLUE) wires only. Double insulated products are always marked with this symbol . **To re-wire, connect the brown and blue wires as indicated below. DO NOT connect the brown or blue to the earth terminal.**
- 1.1.10. Some products require more than a 13 amp electrical supply. In such a case, NO plug will be fitted. **You must** contact a qualified electrician to ensure a 30 amp fused supply is available. We recommend you discuss the installation of an industrial round pin plug and socket with your electrician.
- 1.1.11. **Cable extension reels.** When a cable extension reel is used it should be fully unwound before connection. A cable reel with an RCD fitted is recommended since any product which is plugged into the cable reel will be protected. The section of the cores of the cable is important and should be at least 1.5mm<sup>2</sup>, but to be absolutely sure that the capacity of the cable reel is suitable for this product and for others that may be used in the other output sockets, we recommend the use of 2.5mm<sup>2</sup> section cable.



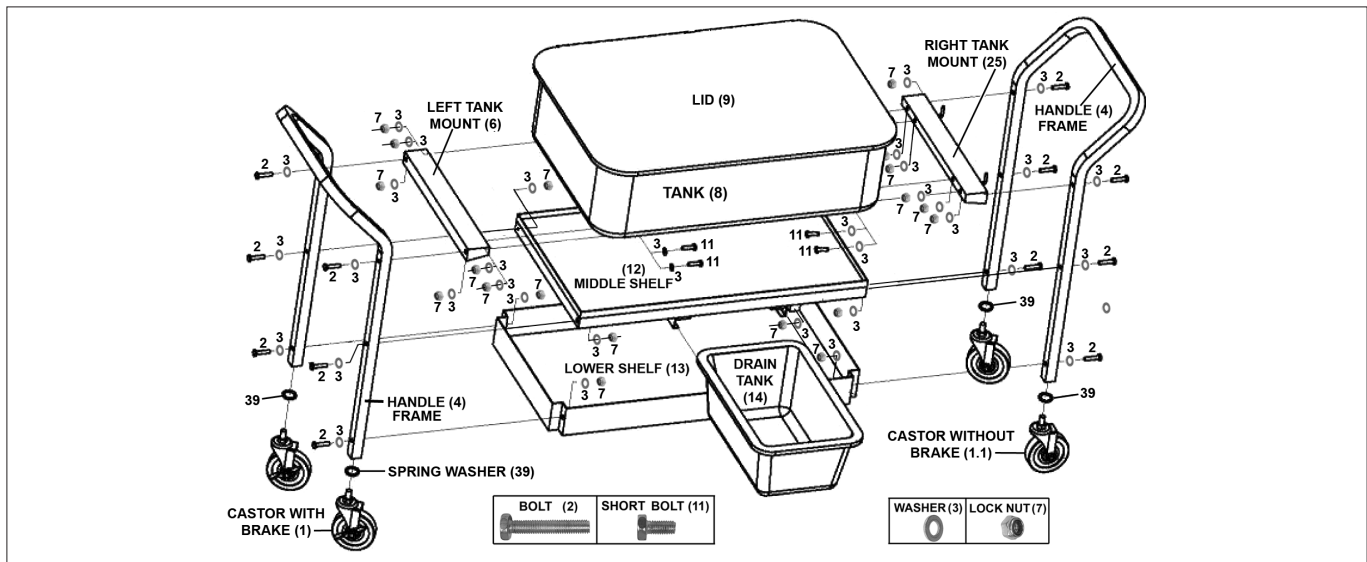
### 1.2 GENERAL SAFETY

- WARNING!** Ensure Health & Safety, local authority, and general work shop practice regulations are adhered to when using this equipment.
- ✓ Familiarise yourself with the applications, limitations and potential hazards of the tank.
- WARNING!** Disconnect the tank from the mains power before changing accessories, servicing or performing any maintenance.
- ✓ Replace or repair damaged parts. Use genuine parts only. Unauthorised parts may be dangerous and will invalidate the warranty.
- WARNING!** DO NOT modify the lid or jam it open. Keep the lid and holding screws in place, tight and in good working order.
- ✓ Locate tank in a suitable work area and keep area clean and tidy and free from unrelated materials. Ensure there is adequate lighting.
- ✓ Ensure there are no flammable or combustible materials near the work area.
- ✓ In case of fire in tank, do not attempt to move unit or remove parts from tank. The lid is fusible and will automatically close extinguishing fire.
- ✓ When cleaning parts ensure that nothing in the tank, including any parts basket, is in a position that would prevent the lid from closing fully if and when the fusible link activates.
- WARNING!** DO NOT SMOKE and keep sources of ignition, such as heaters, lamps, etc., away from the unit, together with flammable or combustible materials, as there is an explosion risk.
- ✓ Use only water soluble solvent. We recommend Sealey AK25 or AK2501.
- WARNING!** When operating the tank always wear approved eye or face protection and appropriate protective clothing, including gloves, to prevent the cleaning agent contacting the skin.
- ✓ Maintain correct balance and footing. Ensure the floor is not slippery and wear non-slip shoes.
- ✓ Remove ill fitting clothing. Remove ties, watches, rings, and other loose jewellery and contain and/or tie back long hair.
- ✓ Keep children and unauthorised persons away from the work area.
- ✓ Avoid unintentional starting.
- ✓ Keep the tank clean for best and safest performance.
- ✓ Dispose of waste liquids in accordance with local authority regulations.
- ✓ When not in use switch off the tank, close the lid and remove the plug from the power supply.
- ✗ DO NOT overfill tank or allow fluid level to fall below pump inlet.
- ✗ DO NOT use the tank for a task it is not designed to perform.
- ✗ DO NOT operate the tank if any parts are damaged or missing as this may cause failure and/or personal injury.
- ✗ DO NOT allow untrained persons to operate the tank.
- ✗ DO NOT operate the tank when you are tired or under the influence of alcohol, drugs or intoxicating medication.
- ✗ DO NOT leave the tank operating unattended.
- WARNING!** Protect the environment - DO NOT allow uncontrolled discharge of pollutants including degreasing solvent.

### 2. INTRODUCTION & SPECIFICATION

Heavy-duty three tier parts washer with one-piece tank, draining board and bucket. Fully sealed electric motor with magnetic drive pump unit. Lid features self-latching fusible link which automatically snaps lid shut in the event of a fire. Includes removable shelf inside tank. Flexible metal nozzle directs solvent over work. Fitted with Ø100mm castor wheels for easy manoeuvrability.

Model No: .....	SM26
Overall Height: .....	1325mm
Overall Length: .....	970mm
Tank Height: .....	200mm
Tank Width: .....	482mm
Tank Length: .....	711mm
Pump Output/hr: .....	160ltr
Motor Power: .....	11W
Supply: .....	230V - 3A
Weight: .....	36kg
Maximum Working Capacity: .....	60ltr
Minimum Working Capacity: .....	22ltr



### 3. ASSEMBLY INSTRUCTIONS

The numbers on the above drawing are cross referenced with the Parts List.

- 3.1. Remove parts from packing and take loose items out of the tank. Before assembly check parts to ensure they are complete and not damaged.
- 3.1. Take the lower shelf (13) and lay it flat and level on a clean nonabrasive surface. Attach a handle frame (4) to one end of the lower shelf at each corner using one bolt (2), two washers (3) and one lock nut (7). One washer should be under the head of the bolt and the other under the lock nut. Ensure that the bent handle portion of the frame is angled away from the unit as shown above. Attach the other end frame to the other end of the lower shelf in a similar manner. Do not fully tighten the bolts at this stage.
- 3.2. Turn the assembly on its side and place the middle shelf (12) in between the end frames and align the threaded holes in the shelf with the bolt holes in the end frames. Ensure that the drainage indent is oriented downwards. Place a washer (3) over a bolt (2). Insert the bolt through the frame and thread it into the threaded hole in the shelf. Repeat the process at all four corners. Do not fully tighten the bolts at this stage.
- 3.3. Turn the assembly back to the vertical position and attach the left tank mount (6) to the frame using one bolt (2), two washers (3) and one lock nut (7) per side. One washer should be under the head of the bolt and the other under the lock nut. Attach the right tank mount (25) to the frame using one bolt (2), two washers (3) and one lock nut (7) per side. The right tank mount has two cable hooks welded to it which should face outwards.
- 3.4. Lower the tank (8) onto the tank mounts (6) & (25) ensuring that the motor side of the tank rests on the right hand tank mount. Align the holes in the brackets on the underside of the tank with the holes in the tank mounts. Fix at each corner using two short bolts (11), two washers (3) and two lock nuts (7). There should be one washer under the head each bolt and the other under the lock nut.
- 3.5. Now fully tighten all fixings.
- 3.6. Open the tank lid and slide the motor housing down onto the shallow brackets on the right hand side of the inside of the tank. Close the lid.
- 3.7. Lay the assembly on its front so that the front edge of the tank lid is facing downwards onto the ground.
- 3.8. Take the two castors without brakes (1.1) and two spring washers (39) and screw them into the end frame at the motor end of the tank.
- 3.9. Take the remaining castors with brakes (1) and two spring washers (39) and screw them into the other end frame.
- 3.10. Lift the assembly onto its wheels and open the tank lid.
- 3.11. Place the internal shelf onto the brackets on the inside of the tank.
- 3.12. Slide the drain tank container (14) into the rails beneath the centre shelf.

### 4. OPERATING INSTRUCTIONS


- WARNING!** Wear safety clothing, eye protection and gloves and ensure you read, understand and apply the safety instructions in Section 1.
- 4.1. Ensure the unit is located on a firm level surface in a well ventilated area and is switched off and unplugged from the mains power supply.
- 4.2. Fill the tank with Sealey solvent. The maximum capacity is 60 litres. The minimum capacity that must cover the pump inlet is 22 litres. Follow the solvent instructions on the packaging.
- 4.3. Place parts to be washed onto the internal shelf. Heavily soiled items should be left to soak before cleaning.
- 4.4. Plug the machine into the power supply and switch the unit on.
- 4.5. The cleaning agent will flow through the flexible tube. Direct solvent flow onto parts.
- 4.6. Do not leave the unit operating unattended. Check the fluid level does not fall below the pump inlet.
- 4.7. When cleaning is done remove all parts and place them onto the centre shelf to drain ensuring the minimum amount of cleaning agent spillage.
- 4.8. Switch off the unit, close the lid and disconnect the unit from the mains power supply. Clean up any spillage and empty the drain tank (14).
- 4.9. Dispose of waste solvent in accordance with local authority regulations. **IMPORTANT!** The SM26 has an anti-fire device built into the unit. In the event of a fire, a fusible link will melt and the lid will automatically close. **DO NOT** prop the lid open as this will prevent the automatic safety feature from operating. Once actuated, the fire detection device cannot be re-used and must be replaced before further use. See item 10 on the parts list.
- When cleaning parts ensure that nothing in the tank is in a position that would prevent the lid from closing fully if and when the fusible link activates.

### 5. MAINTENANCE

- 5.1. Clean the inside of the tank at regular intervals and keep the main body of the unit clean.
- 5.2. Regularly wash the pump filter in clean degreaser and replace if necessary. To access the filter, firstly remove the internal shelf from the tank. Slide the pump housing upwards and off the brackets and lay it on its back. Slide the perforated filter cover off the front of the housing away from the housing lid.
- 5.3. Ensure that all screws and bolts are kept tight.
- 5.4. Change the degreaser when it becomes heavily contaminated. The tank can be drained by removing the drain plug located on the underside of the tank. Ensure that you place a container beneath the drain plug that is big enough to hold the amount of liquid in the tank.

**Mobile Parts Cleaning Tank**  
**Model: SM26**  
 Low Voltage Directive 2006/95/EC  
 EMC Directive 2004/108/EC  
 Machinery Directive 2006/42/EC  
 CE Marking Directive 93/68/EEC

**Declaration of Conformity** We, the sole importer into the UK, declare that the product listed here is in conformity with the following standards and directives.

**CE** Signed by Mark Sweetman  22nd September 2008

The construction file for this product is held by the Manufacturer and may be inspected, by a national authority, upon request to Jack Sealey Ltd.

*For Jack Sealey Ltd. Sole importer into the UK of Sealey Power Products.*

**NOTE:** It is our policy to continually improve products and as such we reserve the right to alter data, specifications and component parts without prior notice.  
**IMPORTANT:** No liability is accepted for incorrect use of this product.  
**WARRANTY:** Guarantee is 12 months from purchase date, proof of which will be required for any claim.  
**INFORMATION:** For a copy of our catalogue and latest promotions call us on 01284 757525 and leave your full name, address and postcode.

<b>SEALEY POWER PRODUCTS</b>	Sole UK Distributor	 01284 757500	 <a href="http://www.sealey.co.uk">www.sealey.co.uk</a>
	Sealey Group, Bury St. Edmunds, Suffolk.	 01284 703534	