

Thank you for purchasing a Sealey product. Manufactured to a high standard this product will, if used according to these instructions and properly maintained, give you years of trouble free performance.

**IMPORTANT: PLEASE READ THESE INSTRUCTIONS CAREFULLY. NOTE THE SAFE OPERATIONAL REQUIREMENTS, WARNINGS AND CAUTIONS. USE THIS PRODUCT CORRECTLY AND WITH CARE FOR THE PURPOSE FOR WHICH IT IS INTENDED. FAILURE TO DO SO MAY CAUSE DAMAGE AND/OR PERSONAL INJURY AND WILL INVALIDATE THE WARRANTY. PLEASE KEEP INSTRUCTIONS SAFE FOR FUTURE USE.**

### 1. SAFETY INSTRUCTIONS

- ❑ **WARNING!** Ensure that Health & Safety, local authority and general workshop practice regulations are adhered to when using the tank.
- ❑ **WARNING!** Installation site must be equipped with suitable fire extinguishers (water must not be used) and escape routes.
- ❑ **WARNING!** Disconnect the air supply from the tank before changing accessories, servicing or performing any maintenance.
- ✓ Maintain the tank in good condition (use an authorised service agent).
- ✓ Replace or repair damaged parts. Use genuine parts only. Unauthorised parts may be dangerous and will invalidate the warranty.
- ✓ Locate the tank in a suitable work area. Ensure that the tank stands on a firm level surface. Keep the area clean and tidy and free from unrelated materials. Ensure that the area is well ventilated and has adequate lighting.
- ❑ **WARNING!** Ensure that the correct air pressure is maintained and not exceeded. Recommended pressure 6.2 bar (90psi).
- ✓ Keep air hose away from heat, oil and sharp edges. Check air hose for wear before each use and ensure that all connections are secure.
- ❑ **WARNING!** This tank is recommended for use only with solvents.
- ✓ Use only recommended solvents as a cleaning agent, do not pour any other type of cleaning fluid into the tank.
- ✓ Keep the tank clean.
- ❑ **WARNING!** DO NOT SMOKE and keep sources of ignition, such as heaters, lamps, etc. away from the unit, together with flammable or combustible materials, as there is an explosion risk.
- ❑ **WARNING!** Wear approved safety eye protection, mask and gloves. If solvent gets on skin or in eyes wash thoroughly with water and take any other action as required by the solvent instructions.
- ✓ Remove ill fitting clothing, ties, watches, rings and other loose jewellery. Contain long hair and wear appropriate protective clothing.
- ✓ Maintain correct balance and footing. Ensure that the floor is not slippery and wear non-slip shoes.
- ✓ Keep non-essential persons away from the work area.
- ✓ In case of fire in the tank, do not attempt to move the unit or remove the spray gun.
- ✗ **DO NOT** use the tank with the lid open and **DO NOT** use it for spray gun testing.
- ✗ **DO NOT** use the tank for any purpose other than that for which it is designed.
- ✗ **DO NOT** operate the tank if any parts are missing or damaged as this may cause failure and/or personal injury.
- ✗ **DO NOT** over-fill the tank.
- ✗ **DO NOT** direct air from the air hose at yourself or others.
- ✗ **DO NOT** operate the tank when you are tired or under the influence of alcohol, drugs or intoxicating medication.
- ✓ When cleaning is complete, ensure that the air supply is turned off.
- ❑ **WARNING!** It is the owner's responsibility to ensure that there is no uncontrolled discharge of any fluids used with this unit and that appropriate arrangements have been made for correct disposal of waste in accordance with government/local authority regulations.

### 2. INTRODUCTION & SPECIFICATION

The SM2402 is ideal for the small garage and serious restorer. The cabinet is constructed of stainless steel and the pneumatic pump delivers sufficient solvent to clean one gun or cup. Cleaning is automatically started/stopped when the lid is closed/opened.

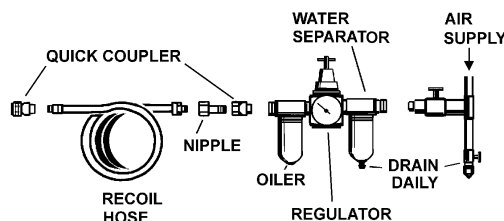
#### SPECIFICATION

|                    |                      |                  |                    |
|--------------------|----------------------|------------------|--------------------|
| Operating Pressure | .....6.2 bar (90psi) | Cleans           | .....1 gun/1 cup   |
| Air Consumption    | .....8-10cfm         | Solvent Capacity | .....1gal (4.5ltr) |
| Air Inlet          | .....1/4"BSP         | Weight           | .....14kg          |

### 3. AIR SUPPLY

A typical air supply system is shown in the diagram below.

- 3.1. Ensure that the air supply valve is closed before connecting the air supply.
- 3.2. An air pressure of 6.2 bar (90psi), and an available air flow of 8-10cfm will be required to operate the unit.
- ❑ **WARNING!** Ensure that the air supply is clean and does not exceed 6.2 bar (90psi). Too high an air pressure and/or unclean air will shorten the product life due to excessive wear, and may be dangerous, causing possible damage and personal injury. Air supply must be equipped with regulator, filter/separator and oiler.
- 3.3. Drain the air supply tank daily. Water in the air line will damage the unit.
- 3.4. Clean the compressor air inlet filter weekly.
- 3.5. Line pressure should be increased to compensate for unusually long air hoses (over 8 metres). The minimum hose internal diameter should be 10mm and fittings must have the same internal dimension.
- 3.6. Keep hose away from heat, oil and sharp edges. Check hoses for wear and make certain that all connections are secure.
- 3.7. The air inlet connection is 1/4"BSP.



## 4. OPERATING INSTRUCTIONS

- ❑ **WARNING! Ensure that you follow the safety instructions. Wear approved safety gloves, goggles, mask and suitable clothing.**
- ❑ **WARNING! Before using the washer always touch a suitable earthing point to dissipate any electrostatic charge you may have.**

**Note:** Numbers in brackets refer to item numbers on the Parts Diagram.

\* **CAUTION! DO NOT run the pump when there is no solvent in the tank.**

### 4.1. PREPARING TANK & ITEMS FOR CLEANING

- 4.1.1. Ensure that the tank drain valve (3) is closed and then pour solvent into tank (2). Ensure that the final level is just under the cup rest plate (21).
- 4.1.2. Confirm that the air supply valve is closed and that the air supply pressure is regulated to not more than 6.2 bar (90psi). Connect the air supply to the tank.
- 4.1.3. For best results clean the spray gun immediately after use, having removed as much residual paint as possible.
- 4.1.4. To open the spray gun for cleaning, squeeze the trigger and fit the trigger lock (24) between trigger and body, as shown in fig. 1.
- 4.1.5. Screw the appropriate stem (20) into the manifold bracket (18) and then attach the gun to the stem, see fig. 2. There are two stems provided, one straight and one elbowed. Use whichever stem suits the configuration of the gun to be cleaned. In general, guns which have top or bottom paint inlets can be put on the elbowed stem and guns which have side paint inlets will go onto the straight stem.
- 4.1.6. Place the cup over nozzle 'C', see fig. 2 - cup rest plate (21) omitted for clarity.

**Note:** The gun and the cup are cleaned separately.

### 4.2. CLEANING

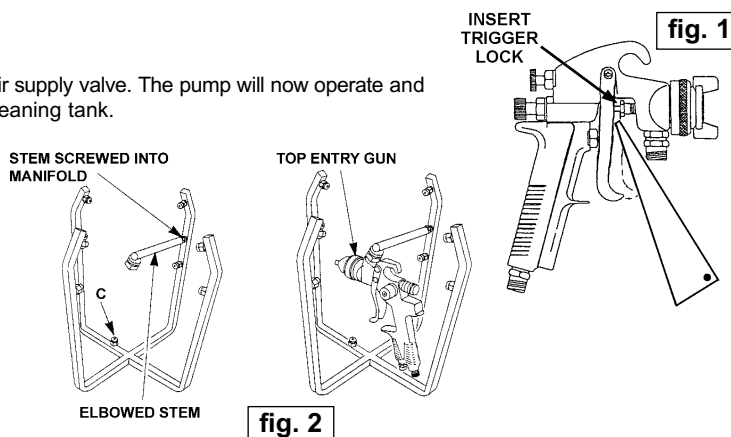
4.2.1. Ensure that washer lid is closed and then open the pump air supply valve. The pump will now operate and produce an atomized spray through the nozzles in the cleaning tank.

4.2.2. Cleaning will be complete after two minutes, at which time pump should be turned off by either by closing the air valve or by opening the tank lid.

*Do not operate pump for longer than 2 minutes at any one time as this will reduce seal life.*

4.2.3. Open lid and remove cleaned equipment.

**NOTE:** If, during cleaning, the lid is opened, the cleaning will automatically stop. Close lid for cleaning to continue. DO NOT store guns in the tank.



## 5. SOLVENT CHANGE & MAINTENANCE

- ❑ **WARNING! It is owner's responsibility to ensure that there is no uncontrolled discharge of any fluids used with this unit and that appropriate arrangements have been made for correct disposal of waste in accordance with government/local authority regulations.**
- ❑ **WARNING! Disconnect the air supply from the unit before changing accessories, servicing or performing any maintenance.**
- ❑ **WARNING! Wear approved safety gloves, goggles, mask and suitable clothing.**

### 5.1. SOLVENT CHANGE

The number of guns the solvent can clean will depend upon the amount of residual paint in or on each gun. We recommend, however, that the solvent is changed on a regular basis to provide optimum cleaning performance and that paint sludge is removed weekly, as detailed below.

- 6.1.1. Sludge removal Drain approximately one litre of solvent/sludge from drain valve (3). Close valve and add clean solvent to bring level up to just below the cup rest plate (21).
- 5.1.2. Solvent change Completely drain dirty solvent as in 6.1.1. Clean inside of tank (2) before refilling with clean solvent. Store and dispose of the used solvent in accordance with local regulations. Wipe up any spillage immediately.

### 5.2. MAINTENANCE

- 5.2.1. Regularly check that opening the washer lid automatically stops the spray.
- 5.2.2. Regularly check and top up the oil in the air supply oiler.
- 5.2.3. Keep the outside of the unit clean.

## 6. DECLARATION OF CONFORMITY

**Declaration of Conformity** We, the sole importer into the UK, declare that the product listed here is in conformity with the following standards and directives.

**SPRAY GUN CLEANING MINI-TANK  
MODEL SM2402**

93/68/EEC CE Marking Directive  
98/37/EC Machinery Directive



The construction file for this product is held by the manufacturer and may be inspected, by a national authority, upon request to Jack Sealey Ltd.

Signed by Mark Sweetman

1st October 2002

For Jack Sealey Ltd. Sole importer into the UK of Sealey Power Products.

**NOTE:** It is our policy to continually improve products and as such we reserve the right to alter data, specifications and component parts without prior notice.

**IMPORTANT:** No liability is accepted for incorrect use of this product.

**WARRANTY:** Guarantee is 12 months from purchase date, proof of which will be required for any claim.

**INFORMATION:** For a copy of our latest catalogue and promotions call us on 01284 757525 and leave your full name, address and postcode.



Sole UK Distributor,  
Sealey Group, Bury St. Edmunds, Suffolk.

01284 757500

01284 703534

E-mail: sales@sealey.co.uk

Web address: www.sealey.co.uk