

Thank you for purchasing a Sealey product. Manufactured to a high standard this product will, if used according to these instructions and properly maintained, give you years of trouble free performance.

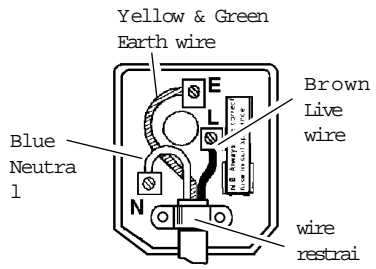
IMPORTANT: PLEASE READ THESE INSTRUCTIONS CAREFULLY. NOTE THE SAFE OPERATIONAL REQUIREMENTS, WARNINGS AND CAUTIONS. USE THIS PRODUCT CORRECTLY AND WITH CARE FOR THE PURPOSE FOR WHICH IT IS INTENDED. FAILURE TO DO SO MAY CAUSE DAMAGE OR PERSONAL INJURY, AND WILL INVALIDATE THE WARRANTY. PLEASE KEEP INSTRUCTIONS SAFE FOR FUTURE USE.

1. SAFETY INSTRUCTIONS

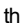
1.1. ELECTRICAL SAFETY. **WARNING!** It is the user's responsibility to read, understand and comply with the following:

You must check all electrical equipment and appliances to ensure they are safe before using. You must inspect power supply leads, plugs and all electrical connections for wear and damage. You must ensure the risk of electric shock is minimised by the installation of appropriate safety devices. An RCCB (Residual Current Circuit Breaker) should be incorporated in the main distribution board. We also recommend that an RCD (Residual Current Device) is used with all electrical products. It is particularly important to use an RCD together with portable products that are plugged into an electrical supply not protected by an RCCB. If in doubt consult a professional electrician. You may obtain a Residual Current Device by contacting your Sealey dealer. **You must** also read and understand the following instructions concerning electrical safety.

- 1.1.1. The **Electricity At Work Act 1989** requires all portable electrical appliances, if used on a business premises, to be tested by a qualified Electrician at least once a year by using a Portable Appliance Tester (PAT).
- 1.1.2. The **Health & Safety at Work Act 1974** makes owners of electrical appliances responsible for the safe condition of the appliance, and the safety of the appliance operator. **If in any doubt about electrical safety, contact a qualified electrician.**
- 1.1.3. Ensure the insulation on all cables and the product itself is safe before connecting to the mains power supply. See 1.1.1. & 1.1.2. above and use a Portable Appliance Tester (PAT).
- 1.1.4. Ensure that cables are always protected against short circuit and overload.
- 1.1.5. Regularly inspect power supply, leads, plugs and all electrical connections for wear and damage, especially power connections, to ensure that none are loose.
- 1.1.6. **Important:** Ensure the voltage marked on the product is the same as the electrical power supply to be used, and check that plugs are fitted with the correct capacity fuse. A 13Amp plug may require a fuse smaller than 13Amps for certain products (*subject to 1.1.10. below*) see fuse rating at right.
- 1.1.7. DO NOT pull or carry the powered appliance by its power supply lead.
- 1.1.8. DO NOT pull power plugs from sockets by the power cable.
- 1.1.9. DO NOT use worn or damage leads, plugs or connections. Immediately replace or have repaired by a qualified Electrician. A U.K. 3 pin plug with ASTA/BS approval is fitted. In case of damage, cut off and fit a new plug according to the following instructions (discard old plug safely). (UK only - see diagram at right). **Ensure the unit is correctly earthed via a three-pin plug.**
 - a) **Connect the GREEN/YELLOW earth wire to the earth terminal 'E'.**
 - b) **Connect the BROWN live wire to live terminal 'L'.**
 - c) **Connect the BLUE neutral wire to the neutral terminal 'N'.**



FUSE RATING
 THIS PRODUCT MUST BE FITTED
 WITH A:
3 Amp FUSE

After wiring, check there are no bare wires, that all wires have been correctly connected and that the wire restraint is tight. Double insulated products are often fitted with live (BROWN) and neutral (BLUE) wires only. Double insulated products are always marked with this symbol . **To re-wire, connect the brown & blue wires as indicated above. DO NOT connect the brown or blue to the earth terminal.**

- 1.1.10. Some products require more than a 13Amp electrical supply. In such a case, NO plug will be fitted. **You must** contact a qualified Electrician to ensure a 30 amp fused supply is available. We recommend you discuss the installation of a industrial round pin plug & socket with your electrician.
- 1.1.11. **Cable extension reels.** When a cable extension reel is used it should be fully unwound before connection. A cable reel with an RCD fitted is recommended since any product which is plugged into the cable reel will be protected. The section of the cable on the cable reel is important. We recommend that at least 1.5mm² section cable but to be absolutely sure that the capacity of the cable reel is suitable for this product and for others that may be used in the other output sockets, we recommend the use of 2.5mm² section cable.

1.2 GENERAL SAFETY

- WARNING!** Ensure health & safety, local authority, and general workshop practice regulations are adhered to when using this equipment.
- Familiarise yourself with this products application and limitations, as well as the specific potential hazards peculiar to the cleaning tank.
- WARNING!** Disconnect the parts washer from the mains power before changing accessories, servicing or performing any maintenance.
- Maintain the parts washer in good condition (use an authorised service agent).
- Replace or repair damaged parts. *Use genuine parts only. Non authorised parts may be dangerous and will invalidate the warranty.*
- Locate the parts washer in an adequate working area for its function. Ensure the washer is stood on a firm level surface. Keep area clean and tidy and free from unrelated materials. Ensure the area is well ventilated and has adequate lighting.
- Keep the parts washer away from heat sources such as heater, sparks, open flames etc.
- Ensure there are no flammable or combustible materials near the work area.
- WARNING!** Always wear approved eye or face protection when operating the cleaning tank.
- Remove ill fitting clothing. Remove ties, watches, rings, and other loose jewellery, and contain long hair.
- Wear appropriate protective clothing.
- Maintain correct balance and footing. Ensure the floor is not slippery and wear non slip shoes.
- Keep children and unauthorised persons away from the working area.
- Avoid accidental starting of the washer by ensuring the unit is unplugged from the mains power switched when not in use.
- Incase of fire in parts unit, do not attempt to remove parts, or the washer. The lid is fusible and will automatically close to extinguish flames.
- Keep the parts washer clean. Remove and clean the filter regularly for best and safest performance.
- DO NOT use the parts washer for any purpose other than for which it is designed.
- DO NOT use parts washer in wet or damp locations or areas where there is condensation.
- DO NOT use the parts washer where there are flammable liquids, solids or gases such as paint solvents, etc.
- DO NOT allow untrained persons to operate the cleaning tank.
- DO NOT operate the parts washer if any parts are missing or damaged as this may cause failure or possible personal injury.

- 7 DO NOT modify or jam the parts washer lid open, as this will make the fusible fire link inoperative which is a dangerous practice and will invalidate the warranty.
- 7 DO NOT use any solvent with a flash point below 140°F. Use only Sealey solvent, contact your local dealer for details.
- 7 DO NOT over fill the parts washer with solvent.
- 7 DO NOT leave the parts washer operating whilst unattended.
- 7 DO NOT operate the parts washer when you are tired, under the influence of alcohol, drugs or intoxicating medication.
- 7 The tank is not suitable for paint thinners, gun wash or air drying.
- 3 When not in use switch the parts washer off, remove plug from the power supply.
- 3 Dispose of waste liquids in accordance with local authority regulations.
- p **WARNING! DO NOT allow uncontrolled discharge of fluids thus polluting the environment.**

1.3. AIR OPERATIONAL SAFETY (Additional safety information if you connect air line to the turbo valve).

- p **WARNING!** Disconnect tank from the air supply as well as the mains electricity before changing accessories, or performing any maintenance.
- p **WARNING!** ensure correct air pressure is maintained and not exceeded.
- 3 Keep air hose away from heat, oil and sharp edges. Check air hose for wear before each use, and ensure that all connections are secure.
- 7 DO NOT direct air from the air hose at yourself or others..
- 3 When not in use ensure the air supply is turned off and disconnected.

2. APPLICATION & SPECIFICATIONS

Industrial cleaning tank with 48 litre cleaning fluid capacity. Fluid re-circulated through replaceable filter element and directed onto workpiece through flexible metal delivery nozzle. The unit may be connect to an air supply to produce turbo agitation bubbles which passes air through fluid producing agitation bubbles which reduces pre-soaking time. The tank lid is fitted with fusible link hinge that will automatically snap the lid shut in the event of a fire. Unit is supplied with a removable shelf and a small parts basket.

Specifications

Power supply230V
 Motor power45W
 Tank Height/width/length (mm)280/525/755
 Overall height910mm
 Minimum working capacity24Ltrs

Overall maximum tank capacity48Ltrs
 Pump output through/Hr205Ltr
 Weight35kg
 OPTIONAL
 Air operating pressure10-25psi
 Air inlet Ø1/4" BSP

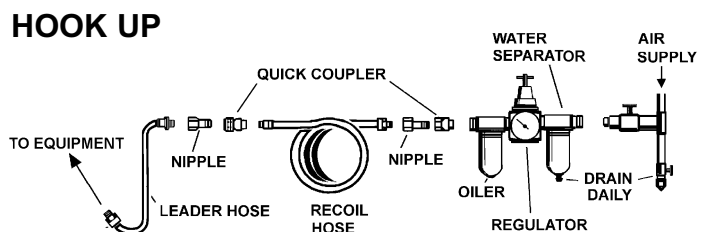
3. ASSEMBLY

As you unpack the product, check contents. Should there be any damaged or missing parts contact your supplier immediately.

- 3.1. Open carton and remove lower shelf. Open lid and remove the pump housing set, form the inner box, parts basket and legs from the tub. Close lid of tub and close carton flaps.
- 3.2. Carefully turn the carton with unit upside down (in order to protect against scratching the unit) and open the bottom of carton.
- 3.3. Assemble legs to the brackets on the bottom of the tub with pan screws, spring washers and hex nuts, (hand tight only).
- 3.4. Set the lower shelf among the four legs and fix with pan screws, spring washer and hex nuts. Level the shelf and tighten screws.
- 3.5. Now tighten the leg screws and turn assembled unit up correct way onto it's legs and remove the outer carton.
- 3.6. Position unit according to safety instructions chapter 1.
- 3.7. Open lid, (not too far). Place the switch box on the pump housing set through the rectangular hole on the side of tub.
- 3.8. Thread the turbo regulator valve (see parts fig 1.17) into the end of the threaded adaptor (16) place washer (15) on end of adaptor and pass through hole in tank secure spigot (13) to adaptor with nut (14) and tighten until control knob is facing up. To prevent air leakage, we recommend using pipe thread seal tape on all threaded connections outside of the tank. We suggest use of a quick connector with a quick coupler to connect your air supply to the regulator.
NOTE: The unit may be operated without connecting to an air supply which is optional.
- 3.9. Place the work shelf onto the two welded supports inside the tub.
- 3.10. Screw a 90° connector into the welded bolt on pump housing, then set the tube to the 90° connector.
- 3.11. Screw flexible spigot into 90° connector of metal tube and place the metal tube on a welded support on the inside of tub.
- 3.12. Check that the tank drain plug is correctly inserted and tightened.
- 3.13. Place the parts basket on work shelf. Check your installation to ensure the unit is ready for use.

4. AIR SUPPLY (OPTIONAL)

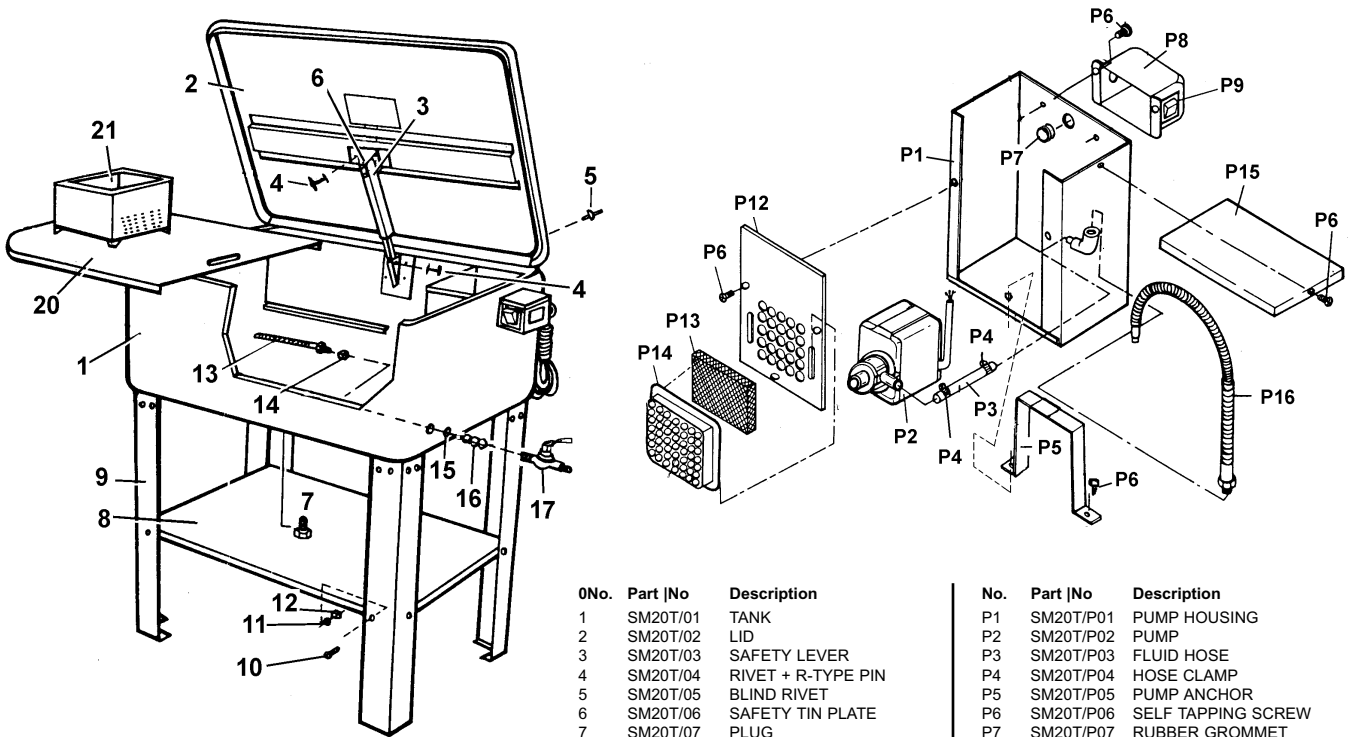
- 4.1. Ensure the air valve is in the "off" position before connecting to the air supply.
- 4.2. p **WARNING! Ensure air supply does not exceed 30PSI. Too high an air pressure and unclean air will shorten the product life due to excessive wear, and may be dangerous causing possible damage and personal injury.**
- 4.3. Drain the air supply tank daily. Water in the air line will damage the item being supplied.
- 4.4. Clean the air inlet filter screen weekly. For recommended hook-up, see diagram to right.
- 4.5. Line pressure should be increased to compensate for unusually long air hoses (over 8 metres). The minimum hose diameter should be 10mm I.D. and air line fittings must have the same inside dimensions.
- 4.6. Keep hose away from heat, oil and sharp edges. Check hoses for wear, and make certain that all connections are secure.



5. OPERATING INSTRUCTIONS

- WARNING! Ensure you have read, understood and apply chapter 1 safety instructions before using the cleaner.**
- 5.1. Check that the washer power switch is in the off position, and that the unit is unplugged from the mains power supply.
 - 5.2. Fill the tank to appropriate capacity (Min 24ltrs, Max 48ltrs) with Sealey solvent, or a general purpose degreaser (contact your local dealer for supply). **DO NOT** use any other type of solvent. **CAUTION! Ensure you follow any instructions provided with the solvent.**
 - 5.3. Ensure the pump is immersed correctly in the solvent.
 - 5.4. Plug the washer into the mains power supply and switch the unit on. Check that solvent flows freely through the flexible spigot.
 - 5.5. Place parts to be cleaned into the cleaning basket, direct spray nozzle onto parts. Ensure any splash back stays inside the tank if not reposition the spray nozzle. For ground in marks, leave the part to soak in the bottom of the tank. Brush parts with cleaning brush if required. Turn off the pump and leave the parts to drain either in the basket, or if too large on the shelf.
 - 5.6. To activate turbo agitation, ensure the air line is connected and turn the regulator valve on to the required output pressure.
 - 5.7. When cleaning is complete turn the washer off and unplug from the mains power supply.
 - 5.8. **WARNING! DO NOT allow uncontrolled discharge of fluids thus polluting the environment.** Dispose of waste liquids in accordance with local authority regulations.
 - 5.9. Keep the parts washer clean. Remove and clean the filter regularly for best and safest performance.

6. PARTS LIST



Original Date: 151099
 Issue Date: 151099
 Version No: 0
 Date Modified: N/A

0No.	Part No	Description
1	SM20T/01	TANK
2	SM20T/02	LID
3	SM20T/03	SAFETY LEVER
4	SM20T/04	RIVET + R-TYPE PIN
5	SM20T/05	BLIND RIVET
6	SM20T/06	SAFETY TIN PLATE
7	SM20T/07	PLUG
8	SM20T/08	LOWER SHELF
9	SM20T/09	LEG
10	SM20T/10	PAN SCREW
11	SM20T/11	SPRING WASHER
12	SM20T/12	HEX. NUT
13	SM20T/13	TURBO SPIGOT
14	SM20T/14	HEX NUT
15	SM20T/15	FIBBER WASHER
16	SM20T/16	THREADED ADAPTOR
17	SM20T/17	TURBO CONTROL VALVE
20	SM20T/20	WORK SHELF
21	SM20T/21	PARTS BASKET

No.	Part No	Description
P1	SM20T/P01	PUMP HOUSING
P2	SM20T/P02	PUMP
P3	SM20T/P03	FLUID HOSE
P4	SM20T/P04	HOSE CLAMP
P5	SM20T/P05	PUMP ANCHOR
P6	SM20T/P06	SELF TAPPING SCREW
P7	SM20T/P07	RUBBER GROMMET
P8	SM20T/P08	SWITCH BOX
P9	SM20T/P09	SWITCH
P12	SM20T/P12	HOUSING FRONT COVER
P13	SM20T/P13	FILTER
P14	SM20T/P14	FILTER COVER
P15	SM20T/P15	HOUSING TOP
P16	SM20T/P16	FLEX HOSE
P17	SM20T/P17	SCREW & WASHER PACK

WORKSHOP CLEANING TANK MODEL SM20T

93/68/EEC CE Marketing Directive
 89/336/EEC Directive (S.I. 1992/2372) & Amendments
 89/392/EEC Machinery Directive (S.I. 1992/3073)

Declaration of Conformity We, the sole importer into the UK, declare that the product listed here is in conformity with the following EEC standards and directives



Signed by Mark Sweetman

Date 15th October 1999

The construction file for this product is held by the Manufacturer and may be inspected on request by contacting Jack Sealey Ltd

For Jack Sealey Ltd. Sole importer into the UK of Sealey Quality Machinery

NOTE: It is our policy to continually improve products and as such we reserve the right to alter data, specifications and component parts without prior notice.
IMPORTANT: No liability is accepted for incorrect use of product. **WARRANTY:** Guarantee is 12 months from purchase date, proof of which will be required for any claim. **INFORMATION:** Call us for a copy of our latest catalogue on 01284 757525 and leave your full name and address including your postcode.



Sole UK Distributor
 Sealey Group.
 Bury St. Edmunds, Suffolk.



01284 757500



01284 703534

E-mail: sales@sealey.co.uk