



# 42" TOW-BEHIND LAWN SWEEPER, 400L HOPPER, ADJUSTABLE BRUSH HEIGHT, HEAVY-DUTY WHEELS, 1066MM

MODEL No: **SLS42T**

Thank you for purchasing a Sealey product. Manufactured to a high standard, this product will, if used according to these instructions, and properly maintained, give you years of trouble free performance.

**IMPORTANT:** PLEASE READ THESE INSTRUCTIONS CAREFULLY. NOTE THE SAFE OPERATIONAL REQUIREMENTS, WARNINGS & CAUTIONS. USE THE PRODUCT CORRECTLY AND WITH CARE FOR THE PURPOSE FOR WHICH IT IS INTENDED. FAILURE TO DO SO MAY CAUSE DAMAGE AND/OR PERSONAL INJURY AND WILL INVALIDATE THE WARRANTY. KEEP THESE INSTRUCTIONS SAFE FOR FUTURE USE.



Refer to  
instruction  
manual



Wear eye  
protection



Wear protective  
gloves



Wear safety  
footwear

## 1. SAFETY

- ✓ Read the entire manual carefully before using the lawn sweeper. Failure to follow instructions may result in serious injury.
- ✓ Before each use, check that there is no damage to the lawn sweeper and that all fixings are tight.
- ✓ Replace or repair damaged parts. Use only recommended parts. Unauthorised parts may be dangerous and will invalidate the warranty.
- ✓ Keep children, pets, and bystanders away from the work area. The lawn sweeper contains moving parts that can cause injury.
- ✓ Avoid large holes and water ditches when using the lawn sweeper.
- ▲ **DANGER!** Keep the lawn sweeper away from fire. Excessive heat can damage the brushes and hopper bag, and the contents may burn.
- **WARNING!** The brushes rotate during operation. Keep hands, feet, and clothing away from moving parts.
- **WARNING!** Be aware of pinch points where the hopper, axle, and brush assembly connect. Keep fingers and hands clear when adjusting or servicing.
- **WARNING!** Use caution when operating on slopes. Avoid steep inclines to prevent tipping or loss of control.
- **WARNING!** Always use caution when unloading the lawn sweeper.
- **WARNING!** Always clear and keep the work area clean when operating.
- **WARNING!** Keep the lawn sweeper away from fire and open flames.
- **WARNING!** Always wear safety gear, eye protection, gloves and work boots when operating the lawn sweeper.
- **WARNING!** Replace or repair damaged or worn parts immediately.
- **WARNING!** Always use caution when unloading the lawn sweeper.
- **WARNING!** Never attach the hopper rope to any part of your body or clothing. **DO NOT** hold the rope while towing the lawn sweeper. Always attach the rope securely to the towing vehicle and ensure it is kept clear of wheels and rotating parts.
- **WARNING!** Operate the lawn sweeper at reduced speed on rough terrain, near ditches, and on hillsides to prevent loss of control.
- **WARNING!** Vehicle braking and stability may be affected when this lawn sweeper is attached. **DO NOT** fill the lawn sweeper to maximum capacity without first ensuring the towing vehicle can safely pull and stop with the lawn sweeper attached. Stay off steep slopes.
- **WARNING!** Stop and inspect the vehicle and lawn sweeper for damage after striking an object. Repair any damage before continuing operation.
- ✗ **DO NOT** at any time carry passengers, sit or stand on the lawn sweeper.
- ✗ **DO NOT** allow children to play on, stand upon or climb in the lawn sweeper.
- ✓ Before storing the lawn sweeper, always empty the hopper bag to prevent spontaneous combustion.
- ✓ Follow the maintenance and lubrication instructions outlined in the Maintenance section of this manual.
- ✓ The warnings, cautions, and instructions in this manual cannot cover every possible condition or situation that may arise during use. The operator must understand that common sense, attention, and good judgment are essential for safe operation. These qualities cannot be built into the product, they must be supplied by the operator.

## 2. INTRODUCTION

42" sweeping brush clears large areas quickly and efficiently, supported by heavy-duty wheels for smooth performance across garden terrain. Adjustable brush height offers precise control over sweeping depth, making it effective on varied surfaces and debris types. With a generous 400L debris container, it provides extended use before emptying, while the tow-behind design is compatible with ride-on mowers, ATVs and compact tractors for effortless operation.



**SLS42T**

See the next page for descriptions of the parts

### 3. SPECIFICATION

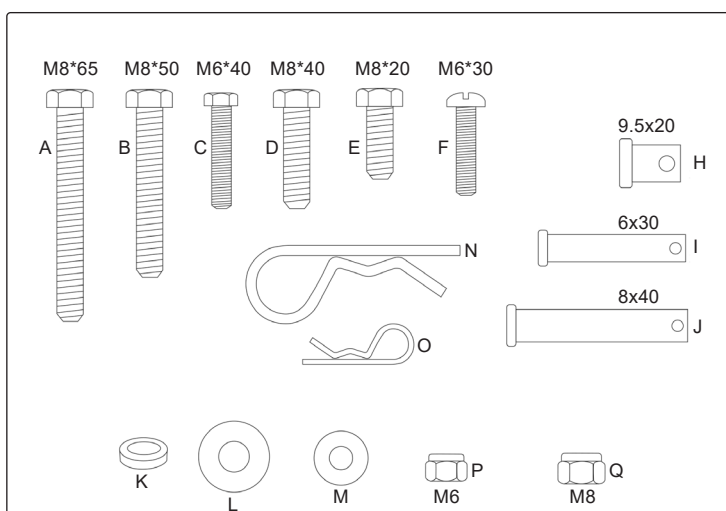
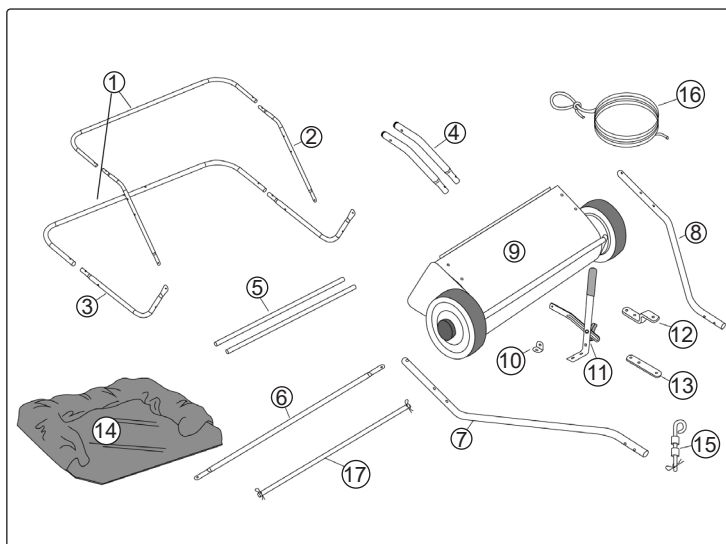
Model No:	<b>SLS42T</b>
Brush to Wheel Ratio:	05:01
Capacity:	400L
Debris Type:	Hay, Leaves and Grass clippings
Height Adjustment:	15mm - 55mm
Nett Weight:	26kg
Product Size:	1680 x 1130 x 600mm
Storage Features:	Adjustable handle and removable
Towing Compatibility:	Yes
Working Width:	42"

1	Hitch Pin/Spacer/R-Pin
2	Wheels
3	Handle Assembly
4	Sweeper Housing Assembly
5	Hopper Bag

**NOTE:** The above content is taken from the illustration on the first page.

### 4. CONTENTS

- 4.1. Open the carton and remove any loose parts, including those found inside bags or tucked into corners. Lay all items out on a flat surface and separate them for easy visibility. Identify each part by comparing it with the attached list or manual, checking labels and quantities to ensure nothing is missing. Before beginning assembly, inspect all components for any signs of damage that may have occurred during shipping, and take a moment to familiarise yourself with the hardware and tools required so the process proceeds smoothly. Keeping parts organised will help prevent confusion and make final assembly faster and more efficient.

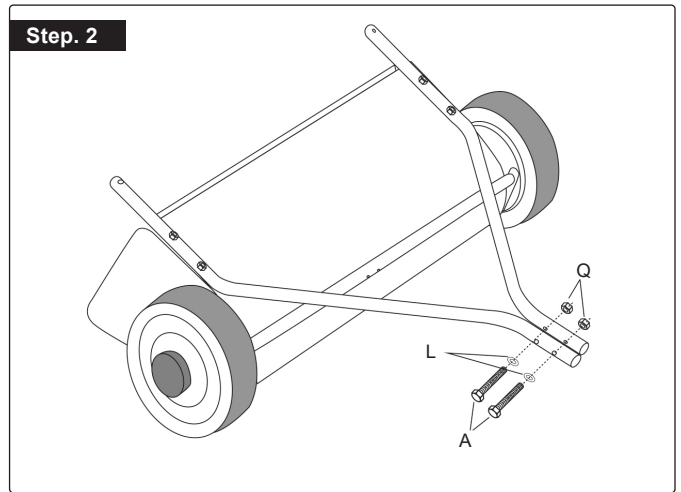
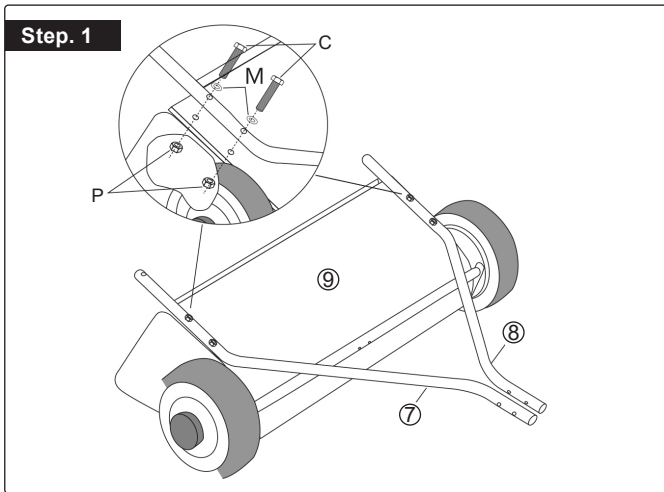


Once everything has been checked and laid out, follow the assembly instructions on the next pages for complete guidance on putting the unit together. The illustrations provided will help you understand the orientation of each component and how they should fit. Study the diagrams before starting to reduce the chance of mistakes, and as you proceed, ensure each part is properly aligned and fully seated before tightening any hardware. Correct assembly is essential for safe operation and long-term durability of the product.

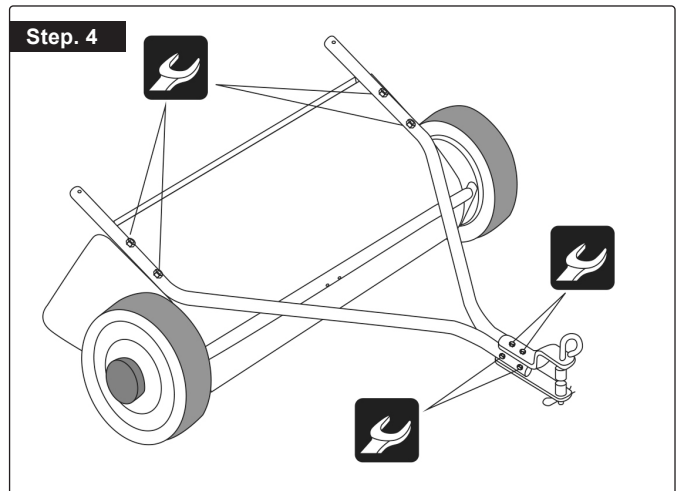
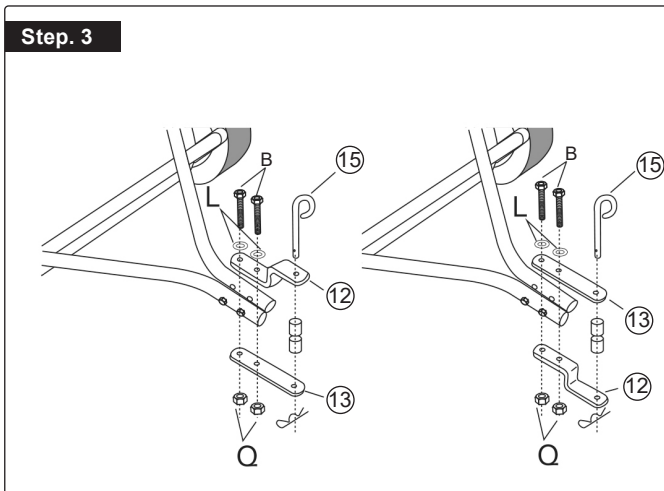
The numbers correspond only to the parts shown in the graphic to the left.		
ITEM	DESCRIPTION	QTY
1	Rear Hopper Tube	2
2	Upper Hopper Side Tube	2
3	Lower Hopper side Tube	2
4	Bag Arm Tube	2
5	Hopper Support Rod	2
6	Bag Frame Strap	1
7	Hitch Tube, Left Side	1
8	Hitch Tube, right Side	1
9	Sweeper Housing Assembly	1
10	Angle Bracket	1
11	Handle Assembly	1
12	Hitch Bracket	1
13	Hitch Bracket (Straight)	1
14	Hopper Bag	1
15	Hitch Pin/Spacer/R-Pin	1
16	Rope	1
17	Front Support Rod	1
A	Hex Head Set Screw M8x65	2
B	Hex Head Set Screw M8x50 Zinc	2
C	Hex Head Set Screw M6x40 Zinc	4
D	Hex Head Set Screw M8x40 Zinc	2
E	Hex Head Set Screw M8x20 Zinc	2
F	Head Screw M6x30	4
H	Clevis Pin	2
I	Clevis Pin	2
J	Clevis Pin	2
K	Adjustable Pole Spacer	1
L	Big Flat Washer	8
M	Flat Washer M6 Zinc	4
N	R-Pin	2
O	R-Pin	4
P	Nyloc Nut M6 Zinc	16
Q	Nyloc Nut M8 Zinc	12

## 5. ASSEMBLY

- 5.1. **STEP 1:** Attach the Hitch Tube, Right Tube (8) to the lawn sweeper Housing Assembly (9) using two Hex Head Set Screws M6 × 40 Zinc (C), two Flat Washer M6 Zinc (M), and two Nyloc Nut M6 Zinc (P). **DO NOT** tighten the fasteners at this stage. Repeat this procedure for the left-hand hitch tube.



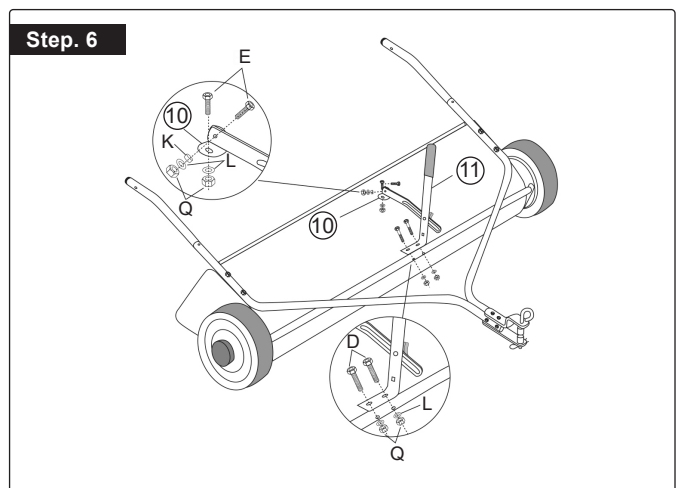
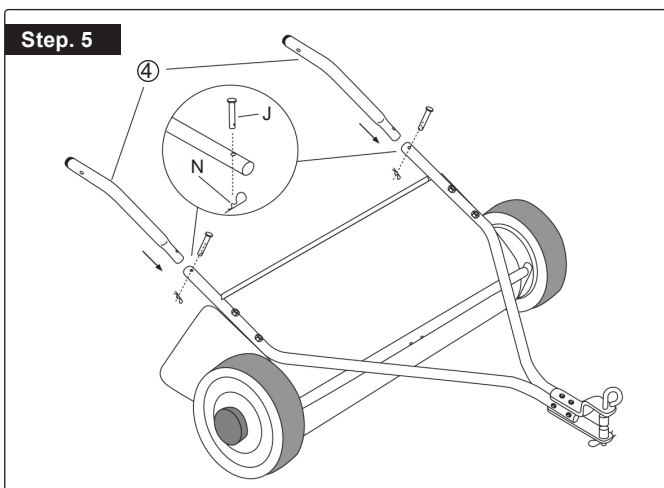
- 5.2. **STEP 2:** Join the left, and right-hand Hitch Tubes (7 & 8) together using one Hex Head Set Screw M8 × 65 (A), one Big Flat Washer (L), and two Nyloc Nuts M8 Zinc (Q). **DO NOT** tighten the fasteners at this stage.



- 5.3. **STEP 3:** Assemble the Hitch Bracket (12) and the Hitch Bracket Straight (13) to the hitch tubes using two Hex head Set Screw M8 × 50 Zinc bolts (B), two Big Flat Washers (L), and two Nylon Lock Nuts M8 Zinc (Q). The bolts should straddle the front hitch tube bolt. **DO NOT** tighten yet.

Disassemble the Hitch Pin (15), including the two spacers and the R-pin, and assemble them to the Hitch Bracket according to the diagram. The up-and-down placement order of the Hitch Bracket (12) and the Straight Hitch Brackets (13) is unrestricted.

- 5.4. **STEP 4:** Tighten the Hitch Bracket and the two Hex Head Set Screws M8 × 50 Zinc.



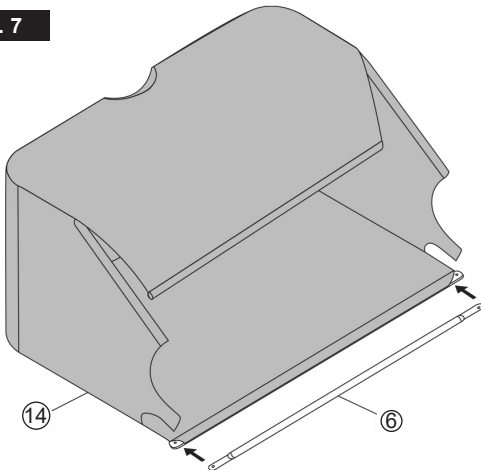
- 5.6. **STEP 5:** Slide the ends of the Bag Arm Tube (4) into the ends of the lawn sweeper. Secure with two Clevis Pins (J) and R Pins (N).

- 5.7. **STEP 6:** Assemble the Handle Assembly (11) to the height adjustment tube.

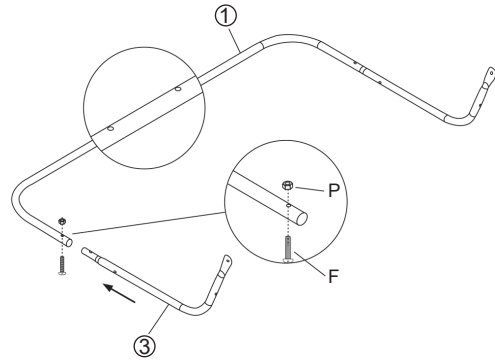
Use two Hex Head Set Screw M8 × 40 Zinc (D), Big Flat Washer (L), and a Nyloc Nut M8 Zinc (Q). **DO NOT** tighten yet. Assemble the Angle Bracket (10) onto the height adjustable handle. Use one Hex Head Set Screw M8 × 20 Zinc (E), Adjust Pole Spacer (K), Big Flat Washer (L), and Nyloc Nut M8 Zinc (Q). Assemble the other side of the angle bracket onto the lawn sweeper housing. Use one Hex Head Set Screw M8 × 20 Zinc (E), Big Flat Washer (L), and Nyloc Nut M8 Zinc (Q). Tighten.

## 5.8. ASSEMBLY OF THE HOPPER BAG

Step. 7



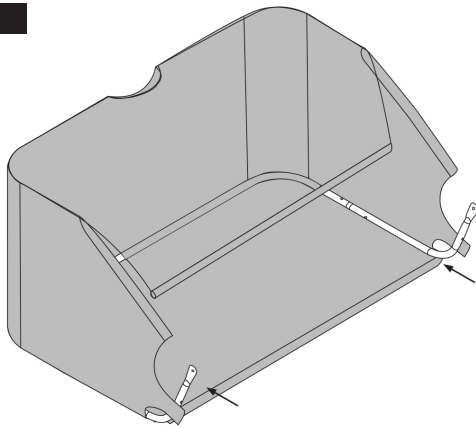
Step. 8



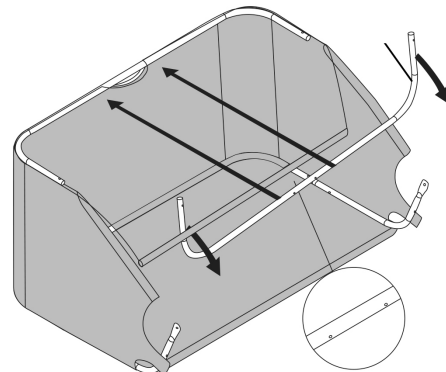
5.9. **STEP 7:** Insert the Bag Frame Strap (6) into the stitched sleeve along the front edge of the Hopper Bag (14).

5.10. **STEP 8:** Turn the Rear Hopper Tube (1) so that the brace holes in the middle of the tube face up. Assemble the ends of the rear hopper tube onto the ends of the Lower Hopper Side Tube (3). Fasten together using Head Screw M6 × 30 (F) and Nyloc Nut M6 Zinc (P).

Step. 9



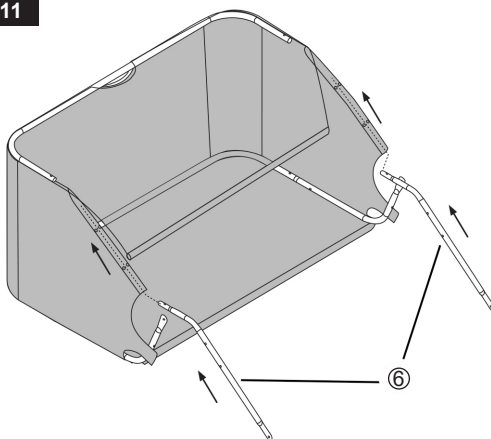
Step. 10



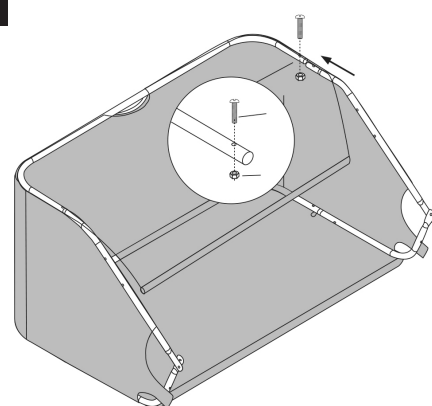
5.11. **STEP 9:** Slide the assembled tube from step 8 into the bottom of the Hopper Bag (14).

5.12. **STEP 10:** Turn the other Rear Hopper Tube (1) so that the brace holes in the middle face down. Slide the Rear Hopper Tube (1) through each collar on the hopper bag.

Step. 11



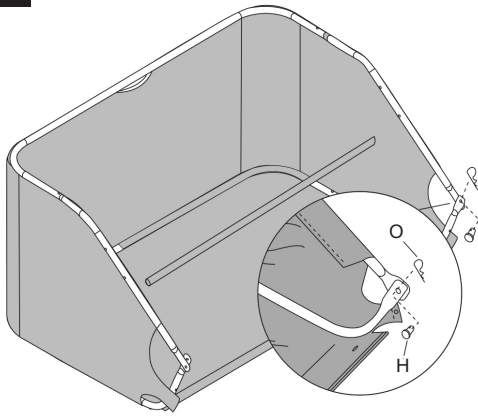
Step. 12



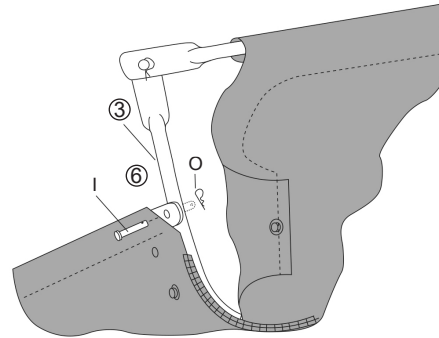
5.13. **STEP 11:** Insert the two Upper Hopper Side Tubes (2) through the stitched flaps on each side of the hopper bag.

5.14. **STEP 12:** Assemble the ends of the Rear Hopper Tube (1) onto the ends of the Upper Hopper Side Tubes (2). Fasten together using Head Screw M6 × 30 (F) and Nyloc Nut M6 Zinc (P).

Step. 13

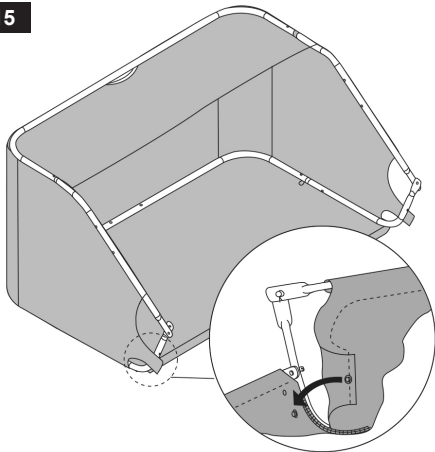


Step. 14

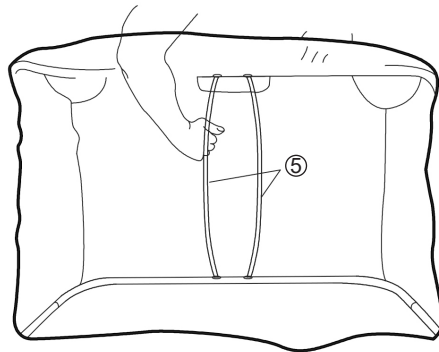


- 5.15. **STEP 13:** Attach the ends of the Lower Hopper Side Tube (3) to the inside of the Upper Hopper Side Tube (2) using two Clevis Pins (H), inserted from the inside, and two R-pins (O).
- 5.16. **STEP 14:** Assemble the bag frame strap to the Lower Hopper Side Tubes (3) using two Clevis Pins (I) and R Pin (O).

Step. 15

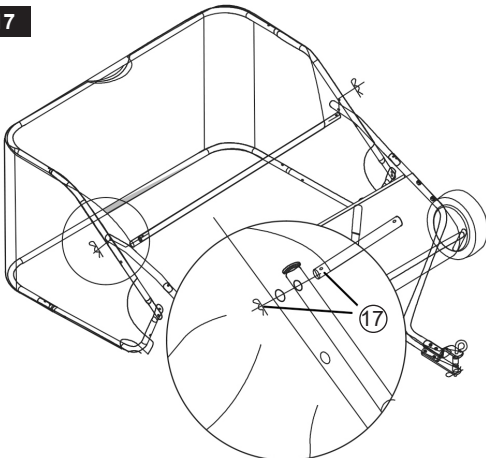


Step. 16

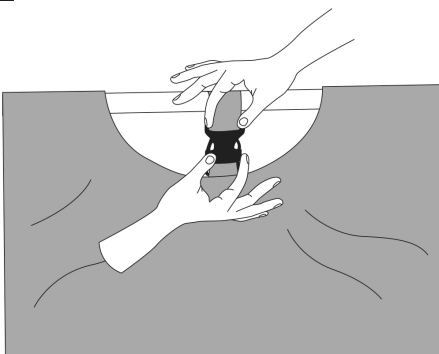


- 5.17. **STEP 15:** Wrap the bag corner sections around the Lower Hopper Side Tubes and secure them by fastening the bag flaps to the bag bottom snaps on both sides.
- 5.18. **STEP 16:** Tip the hopper onto its back to install the two Hopper Support Rods (5). Insert the ends of each rod into the corresponding upper and lower rear hopper tubes, applying only the minimal bend required to align the rod with the tube holes.
- IMPORTANT: DO NOT OVER BEND** the support rods during this step. **OVER BENDING** will compromise the steel rods' structural tension and reduce their supporting capacity.

Step. 17

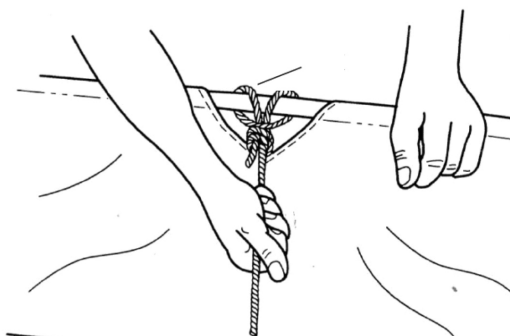
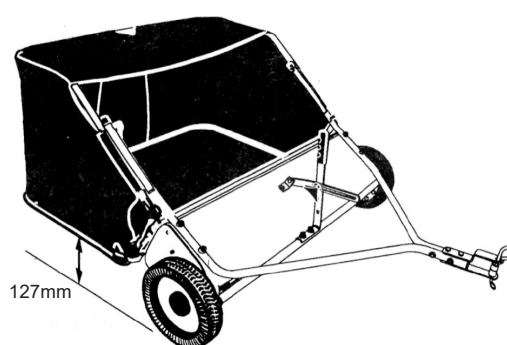


Step. 18



- 5.19. **STEP 17:** Insert the Front Support Rod (17) into the stitched sleeve along the upper edge of the Hopper Bag (14). Insert the Front Support Rod (17) through the upper hole in each upper hopper side tube. Assemble the bag arm tube and secure it with an R-Pin (N). (Remove the Front Support Rod.)
- 5.20. **STEP 18:** Snap the buckles on the Hopper Bag (14).



**Step. 19****Step. 20**

**5.21. STEP 19:** Secure the Rope (16) to the top center of the hopper bag frame.

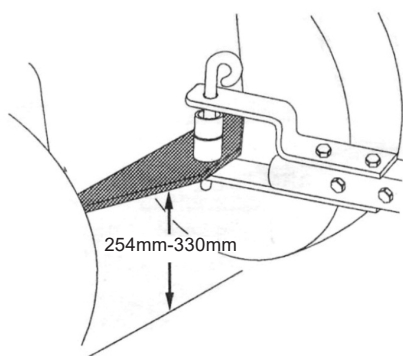
**5.22. ATTACHING LAWN SWEEPER HITCH TO TRACTOR (STEPS 20, 21, 22)**

Place the tractor and lawn sweeper on a flat, level surface. Set the lawn sweeper height adjustment handle to approximately the middle of its adjustment range. Attach the lawn sweeper hitch brackets to the tractor hitch, arranging the 3/4" spacers so that the bottom of the lawn sweeper bag is approximately level and 127–178 mm above the ground.

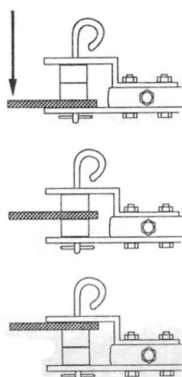
See Step.21 for tractor hitches that are 254–330 mm above the ground.

See Step.22 for tractor hitches that are 203–254 mm above the ground.

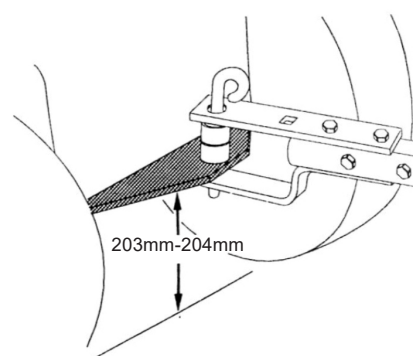
**IMPORTANT:** For best performance, the bottom of the lawn sweeper bag should be approximately level and 127–178 mm above the ground.

**Step. 21**

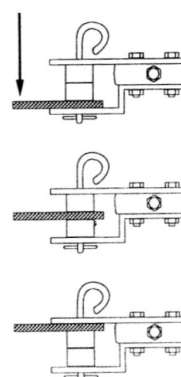
**TRACTOR HITCH**



Tractor hitches with 203–330 mm ground clearance

**Step. 22**

**TRACTOR HITCH**



Tractor hitches with 203–254 mm ground clearance

## 6. OPERATION

### 6.1. BRUSH HEIGHT ADJUSTMENT

To adjust your lawn sweeper brushes to the optimal operating height, loosen the adjustment knob and push down on the height adjustment lever to raise the brush. The best adjustment is when the brush is set approximately 13 mm into the grass, maintaining an even height before sweeping.

### 6.2. SWEEPING SPEED

Start at approximately 3 mph (third gear on most tractors). Depending on conditions, it may be necessary to adjust the sweeping speed to achieve the best results.

### 6.3. DUMPING OF LAWN SWEEPER

Your lawn sweeper can be dumped easily without getting off the tow vehicle. Simply pull the rope forward to dump the hopper.

Always empty the hopper after each use.

▲ **DANGER!** Never attach the hopper rope to any part of your body or clothing.

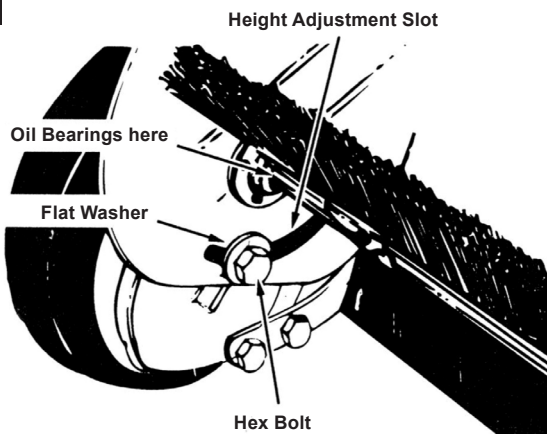
□ **WARNING!** Never hold onto the rope while towing the lawn sweeper. Attach the rope to the towing vehicle to keep it away from wheels and rotating parts.

## 7. MAINTENANCE

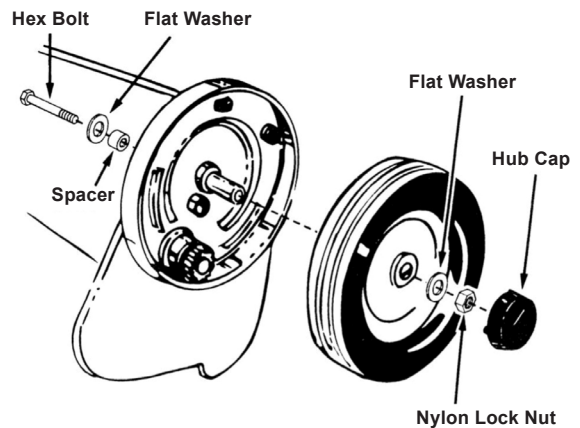
### 7.1. GENERAL

- ✓ Check for loose fasteners before each use.
- ✓ Clean the lawn sweeper after each use as previously described.
- ✓ Clean the lawn sweeper housing with a soft brush or cloth.
- ✓ Remove debris from the hopper bag using a brush or broom.
- ✓ Remove any material that has wrapped around the brushes or ends of the brush shaft.
- ✓ Inspect for worn or damaged parts, such as brushes and wheels, before each use. Replace as necessary.
- ✓ Lubricate the brush shaft bearing twice a year with a few drops of lightweight oil (see Step.23).
- ✓ Lubricate the wheel bearings at the start of each season.
- ✓ Remove hub cap and apply a few drops of light weight oil.

#### Step. 23



#### Step. 24



- ✓ **Every two years**, remove the wheels and clean the gears inside the wheel housing. After cleaning, lubricate the gears with an even coat of light grease. To remove a wheel, pop off the hub cap, then remove the lock nut and flat washer (see Step 24). Also refer to Section 7.4

### 7.2. STORAGE

**CAUTION:** Before storing the lawn sweeper, always empty the hopper bag to avoid spontaneous combustion.

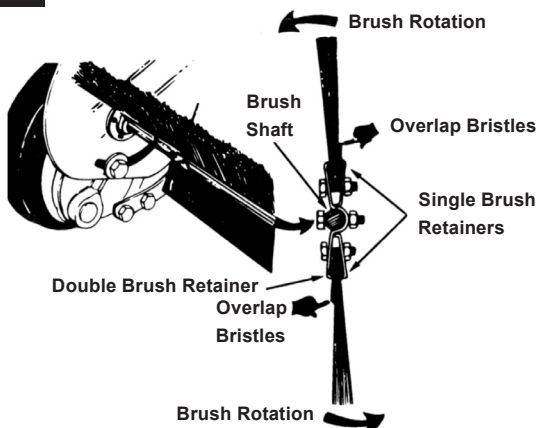
- ✓ Clean the lawn sweeper and hopper bag thoroughly to help prevent rust and mildew.
- ✓ To collapse the hopper bag for storage, remove the two hopper support rods from the rear of the hopper.
- ✓ Store in a dry area.

### 7.3. BRUSH REPLACEMENT

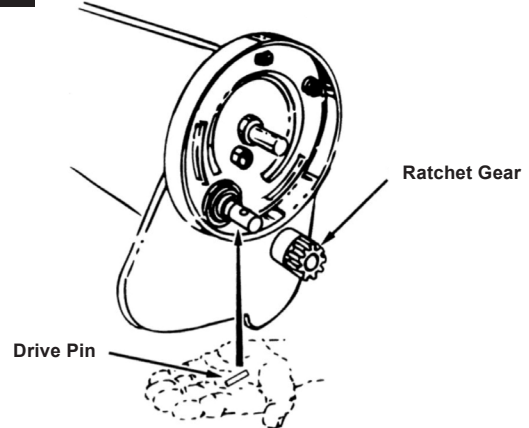
**NOTE:** Brush replacement should be done one brush at a time.

1. Remove the hopper bag from the lawn sweeper.
2. Loosen the hex bolts and lock nuts on the two single brush retainers, which clamp one brush to the double brush retainers. **DO NOT** loosen or remove the bolts that fasten the double brush retainers to the brush shaft.
3. Slide the brush out of the retainers, noting on which side of the brush the bristles overlap.
4. Install the new brush, making sure the bristles overlap on the same side as before. (Step 25).

#### Step. 25



#### Step. 26



### 7.4. WHEEL GEAR AND PAWL SERVICE

**IMPORTANT: DO NOT** remove both wheels at the same time to avoid mixing parts.

(The R.H. and L.H. Ratchet gears are not interchangeable). Make notes on the position of washers and snap rings during disassembly.

1. Remove only one wheel from the lawn sweeper.
2. Remove the retaining rings and washers that hold the ratchet gear on the brush shaft.
3. Slide the gear off the brush shaft. (Check for the drive pin, which may have fallen out when the ratchet gear was removed).

#### 7.5. TO REASSEMBLE

1. Insert the drive pin through the hole near the end of the brush shaft, ensuring it slides freely back and forth.
2. Lightly grease the shaft and slide the ratchet gear back onto it.
3. Lightly grease the axle and the gear teeth on the wheel, then reassemble the wheel.

**Check:** The brushes should rotate only during forward rotation of the wheel. If the brushes rotate in both directions, the drive pin is jamming in the ratchet gear. Disassemble, then clean and lubricate the drive pin and ratchet gear.

4. Remove the second wheel and repeat the procedure.

## 8. TROUBLESHOOTING

Wheels Skid when sweeping	<ol style="list-style-type: none"> <li>1. Brushes set too low.</li> <li>2. Brushes are jammed.</li> <li>3. Wheels are jammed.</li> </ol>	<ol style="list-style-type: none"> <li>1. Adjust the height so the brushes extend approximately 13 mm into the grass.</li> <li>2. Stop the lawn sweeper and remove any obstructions.</li> <li>3. Remove one wheel at a time to check for obstructions or damage. Refer to the Service and Adjustment section.</li> </ol>
Refer to the spare parts section at the end of this manual to order replacement parts.		

#### 8.2. END OF LIFE

When your lawn sweeper reaches the end of its life, it should not be disposed of with household waste. Remove any lubricants, oils, or greases and recycle them according to local regulations. Wheels, metal parts, and plastics should be separated and taken to authorised recycling centres, while electronic components or batteries (if fitted) must be disposed of safely. Do not burn any parts, and always wear protective gloves and eyewear when dismantling the unit. Following these steps helps protect the environment and ensures compliance with UK waste disposal regulations.



#### ENVIRONMENT PROTECTION

Recycle unwanted materials instead of disposing of them as waste. All tools, accessories and packaging should be sorted, taken to a recycling centre and disposed of in a manner which is compatible with the environment. When the product becomes completely unserviceable and requires disposal, drain any fluids (if applicable) into approved containers and dispose of the product and fluids according to local regulations.



REGISTER YOUR  
PURCHASE HERE

**Note:** It is our policy to continually improve products and as such we reserve the right to alter data, specifications and component parts without prior notice.

**Important:** No Liability is accepted for incorrect use of this product.

**Warranty:** Guarantee is 12 months from purchase date, proof of which is required for any claim.

**Jack Sealey Ltd t/a Sealey Group**, Kempson Way, Suffolk Business Park, Bury St Edmunds, Suffolk, IP32 7AR UK

**Jack Sealey (EU) Ltd t/a Sealey Group**, Farney Street, Carrickmacross, Co. Monaghan, A81 PK68 Ireland

**Tel:** 01284 757500 • **Email:** sales@sealey.co.uk • **Web:** www.sealey.co.uk