



# SMOKE ALARM

MODEL NO: SFAL01

Thank you for purchasing a Sealey product. Manufactured to a high standard, this product will, if used according to these instructions, and properly maintained, give you years of trouble free performance.

**IMPORTANT:** PLEASE READ THESE INSTRUCTIONS CAREFULLY. NOTE THE SAFE OPERATIONAL REQUIREMENTS, WARNINGS & CAUTIONS. USE THE PRODUCT CORRECTLY AND WITH CARE FOR THE PURPOSE FOR WHICH IT IS INTENDED. FAILURE TO DO SO MAY CAUSE DAMAGE AND/OR PERSONAL INJURY AND WILL INVALIDATE THE WARRANTY. KEEP THESE INSTRUCTIONS SAFE FOR FUTURE USE.



Refer to  
instruction  
manual

## 1. SAFETY

- ✓ This alarm is a smoke detector of the photo cell principle. This means that the alarm checks the air for smoke resulting from fire. It does not detect heat, gas or fire.
- ✓ If the smoke detector is properly mounted and maintained it will sound an alarm at an early stage. In the event of a fire it can give you those extra seconds needed to vacate your home and call the fire brigade.
- ✓ The alarm is designed to detect smoke, it can not prevent a fire.
- ✓ Placing a smoke alarm is part of your fire protection, just as: fire extinguishers, emergency ladders, ropes, choice of materials used in renovation are.
- ✓ Always ensure that you have an evacuation plan, and discuss this with your children. Ensure that each room can be left without opening the door, e.g. by the window. If there is any question as to the cause of an alarm, it should be assumed that the cause is an actual fire and the dwelling evacuated immediately.
- ✗ **DO NOT** paint the smoke alarm.

## 2. INTRODUCTION

Certified to BS EN14604:2005 + AC1:2008. Detachable composite facia, allowing the user to change the 9V battery (not included) when required. Fire Service advises to replace this type of alarm after 10 years.

## 3. BATTERIES

- 3.1. The smoke detector works on one 9V DC battery. Normally the battery will last at least one year under normal conditions of use.
- 3.2. If the battery is flat or almost flat the smoke detector will indicate this with an audible "beep". This indicator sounds continually with intervals of 30-40 seconds for at least 7 days.
- 3.3. Replace the battery when this indicator sounds. Use a 9V alkaline DC battery of high quality.
- 3.4. **BATTERY REPLACEMENT**
- 3.4.1. Turn the alarm anticlockwise to remove it from the baseplate. Remove battery and replace ensuring connector is fitted securely. Refit to baseplate.

## 4. MOUNTING

### 4.1. WHERE IS THE BEST PLACE TO MOUNT SMOKE DETECTORS? REFER TO FIG.2

- at least one in each room
- in the hallway, in the stairway
- in front of each bedroom door
- in each bedroom (if you sleep with door shut)
- in the living room
- in a storage room or spaces with electric equipment

### 4.2. THE SMOKE ALARM SHOULD NOT BE MOUNTED IN:

- a room in which the temperature can reach below -4°C or above 40°C
- in damp spaces
- just in front of doors or windows and not near a ventilator or radiator

- ✗ **DO NOT** mount the alarm in a place which is difficult to reach because of the need to reach the test button, to replace the battery and carry out maintenance.

### 4.3. MOUNTING

- 4.3.1. Mount the alarm in the centre of the ceiling of the room.
- 4.3.2. Fix the base plate, using the screws provided, onto the area chosen. Refer to fig.1.
- 4.3.3. Gently tighten the alarm onto the base plate.

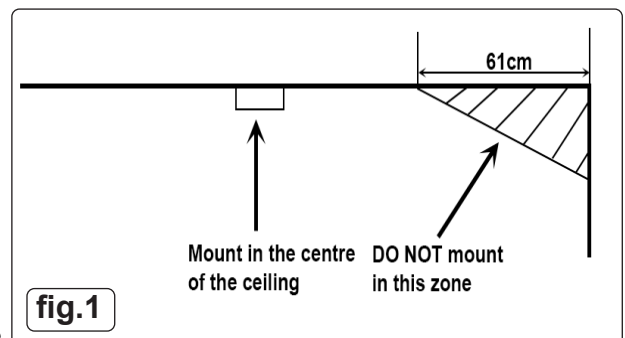
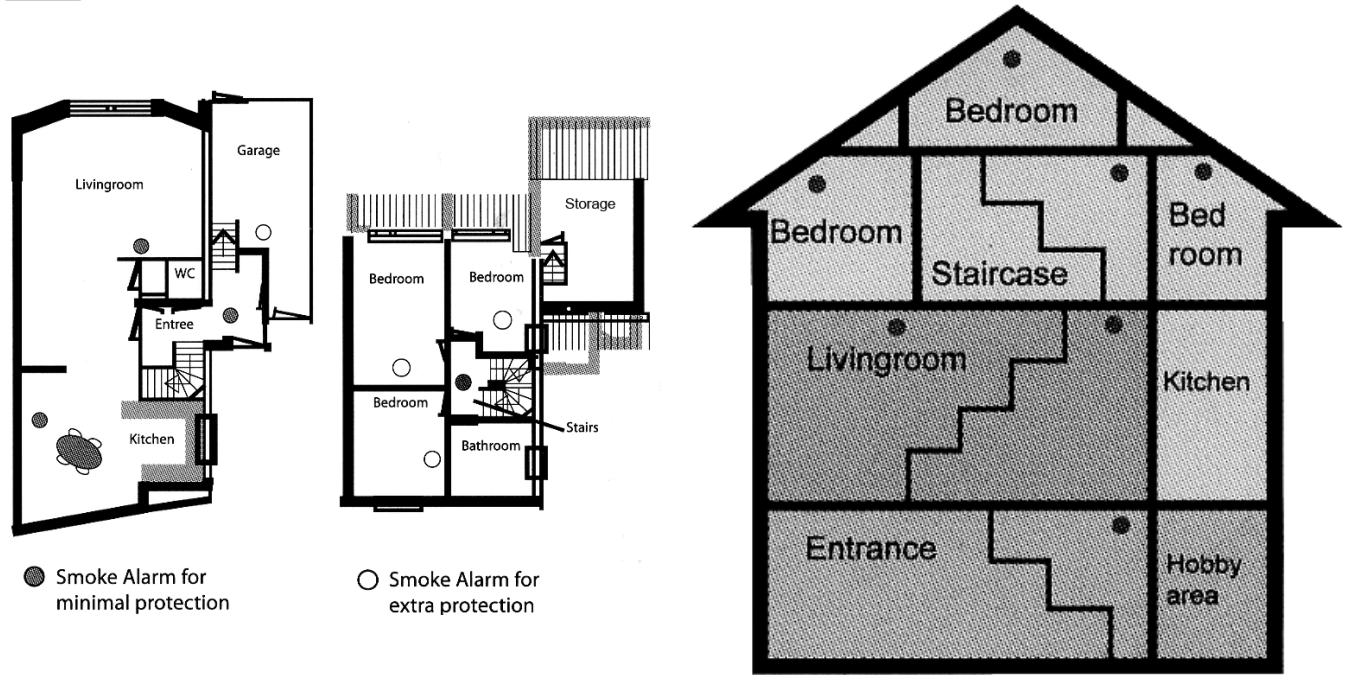


fig.2



**5. OPERATION**

- 5.1. The alarm has a test button, press this until the alarm signal sounds. Test the alarm at least once a week and after replacing the battery or after cleaning.
- 5.2. The alarm must be cleaned with a vacuum cleaner regularly to remove dust particles and to protect the alarm. Keep the casing closed whilst cleaning.
- 5.3. If the alarm fails to operate correctly, contact your Sealey stockist.
- 5.4. Replace this alarm after 10 years.



**BATTERY REMOVAL**

Under the Waste Batteries and Accumulators Regulations 2009, Jack Sealey Ltd are required to inform potential purchasers of products containing batteries (as defined within these regulations), that they are registered with Valpak's registered compliance scheme. Jack Sealey Ltd Batteries Producer Registration Number (BPRN) is BPRN00705.



**WEEE REGULATIONS**

Dispose of this product at the end of its working life in compliance with the EU Directive on Waste Electrical and Electronic Equipment (WEEE). When the product is no longer required, it must be disposed of in an environmentally protective way. Contact your local solid waste authority for recycling information.



**ENVIRONMENT PROTECTION**

Recycle unwanted materials instead of disposing of them as waste. All tools, accessories and packaging should be sorted, taken to a recycling centre and disposed of in a manner which is compatible with the environment. When the product becomes completely unserviceable and requires disposal, drain any fluids (if applicable) into approved containers and dispose of the product and fluids according to local regulations.

**Note:** It is our policy to continually improve products and as such we reserve the right to alter data, specifications and component parts without prior notice.

**Important:** No Liability is accepted for incorrect use of this product.

**Warranty:** Guarantee is 12 months from purchase date, proof of which is required for any claim.

Sealey Group, Kempson Way, Suffolk Business Park, Bury St Edmunds, Suffolk. IP32 7AR

01284 757500

01284 703534

sales@sealey.co.uk

www.sealey.co.uk