

Thank you for purchasing a Sealey product. Manufactured to a high standard this product will, if used according to these instructions and properly maintained, give you years of trouble free performance.

! IMPORTANT: PLEASE READ THESE INSTRUCTIONS CAREFULLY. NOTE THE SAFE OPERATIONAL REQUIREMENTS, WARNINGS, AND CAUTIONS. USE THIS PRODUCT CORRECTLY, AND WITH CARE FOR THE PURPOSE FOR WHICH IT IS INTENDED. FAILURE TO DO SO MAY CAUSE DAMAGE AND/OR PERSONAL INJURY AND WILL INVALIDATE THE WARRANTY.

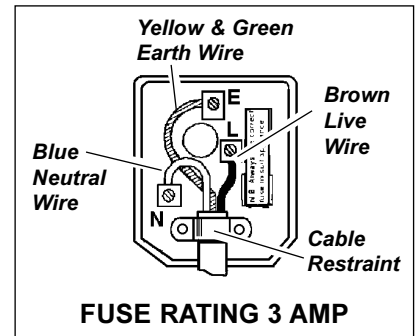
1. SAFETY INSTRUCTIONS

1.1 ELECTRICAL SAFETY

⚠ WARNING! It is the responsibility of the owner and the operator to read, understand and comply with the following: You must check all electrical products, before use, to ensure that they are safe. You must inspect power cables, plugs, sockets and any other connectors for wear or damage. You must ensure that the risk of electric shock is minimised by the installation of appropriate safety devices. A Residual Current Circuit Breaker (RCCB) should be incorporated in the main distribution board. We also recommend that a Residual Current Device (RCD) is used. It is particularly important to use an RCD with portable products that are plugged into a supply which is not protected by an RCCB. If in any doubt consult a qualified electrician. You may obtain a Residual Current Device by contacting your Sealey dealer.

You must also read and understand the following instructions concerning electrical safety.

- 1.1.1 The Electricity at Work Act 1989 requires that all portable electrical appliances, if used on business premises, are tested by a qualified electrician, using a Portable Appliance Tester (PAT), at least once a year.
- 1.1.2 The Health & Safety at Work Act 1974 makes owners of electrical appliances responsible for the safe condition of those appliances and the safety of the appliance operators. If in any doubt about electrical safety, contact a qualified electrician.
- 1.1.3 Ensure that the insulation on all cables and on the appliance is safe before connecting it to the power supply. See 1.1.1 and 1.1.2 and use a Portable Appliance Tester.
- 1.1.4 Ensure that cables are always protected against short circuit and overload.
- 1.1.5 Regularly inspect power supply cables and plugs for wear or damage and check all connections to ensure that none is loose.
- 1.1.6 Important: Ensure that the voltage marked on the appliance matches the power supply to be used and that the plug is fitted with the correct fuse - see fuse rating at right.
- 1.1.7 DO NOT pull or carry the appliance by the power cable.
- 1.1.8 DO NOT pull the plug from the socket by the cable.
- 1.1.9 DO NOT use worn or damaged cables, plugs or connectors. Immediately have any faulty item repaired or replaced by a qualified electrician. When a BS 1363/A UK 3 pin plug is damaged, cut the cable just above the plug and dispose of the plug safely. Fit a new plug according to the following instructions (UK only).
 - a) Connect the GREEN/YELLOW earth wire to the earth terminal 'E'.
 - b) Connect the BROWN live wire to the live terminal 'L'.
 - c) Connect the BLUE neutral wire to the neutral terminal 'N'.
 - d) After wiring, check that there are no bare wires, that all wires have been correctly connected, that the cable outer insulation extends beyond the cable restraint and that the restraint is tight. Double insulated products, which are always marked with this symbol are fitted with live (brown) and neutral (blue) wires only. To rewire, connect the wires as indicated above - DO NOT connect either wire to the earth terminal.
- 1.1.10 Products which require more than 3 amps are supplied without a plug. In this case you must contact a qualified electrician to ensure that a suitably rated supply is available. We recommend that you discuss the installation of an industrial round pin plug and socket with your electrician.
- 1.1.11 If an extension reel is used it should be fully unwound before connection. A reel with an RCD fitted is preferred since any appliance plugged into it will be protected. The cable core section is important and should be at least 1.5mm², but to be absolutely sure that the capacity of the reel is suitable for this product and for others which may be used in the other output sockets, we recommend the use of 2.5mm² section cable.



1.2 GENERAL SAFETY

- ✓ Disconnect the fan from the mains power when not in use, and before servicing or performing any maintenance.
- ✓ Use the fan in dry areas only. Do not use in wet or high condensation locations such as bathrooms, showers, or pools.
- ⚠ **WARNING!** If fan falls into water, immediately switch off and disconnect from the mains power supply. Do not touch the fan until the mains power supply has been disconnected.
- ✓ Always disconnect the fan from the power supply when moving it from one location to another.
- ✓ Keep the fan clean and maintained in good condition (use an authorised service agent).
- ✓ Use recommended parts only (unauthorised parts may be dangerous, and will invalidate your warranty).
- x DO NOT insert any objects through the fan guard.
- x DO NOT cover the fan.
- x DO NOT immerse the fan in water or any other liquid.
- x DO NOT allow children to operate the fan.
- x DO NOT stand the fan where it may be knocked over or off a surface, or where the lead may cause a person to trip.
- x DO NOT use the fan outdoors.
- x DO NOT use an extension cord unless it has been approved by an electrical authority.
- ✓ When not in use store in a safe, dry, childproof location.

2. INTRODUCTION & SPECIFICATION

Features tilt and swivel head for optimum air circulation. Push button controls and fully guarded fan blades to BS5060/IEC879 for ease of use and extra safety. Smooth running motor powers both fan blades and oscillating gearbox for even air distribution.

Fan Diameter:250mm(10")	Maximum Air Flow:30mtr ³ /min	Input:230V
Speeds:2	Power:32W	Overall Height:420mm

3. ASSEMBLY & OPERATION

WARNING! Ensure you read, understand and apply the safety instructions in part 1 before assembling/using the fan.

3.1 ASSEMBLY

Unpack carton and assemble the fan as follows:

- 3.1.1 Remove the locking nut (fig 1.1) from the centre of the fan.
 - 3.1.2 Identify the rear grille by the location holes in the centre plate (fig 1.2) and place the guard over the fan spindle and fit onto the three location pins (fig 1.3).
 - 3.1.3 Secure the rear grille with locking nut (fig 1.1).
 - 3.1.4 Push the fan blade onto the motor shaft as far as it will go.
 - 3.1.5 Identify the three sets of location pins on the rim of the front grille. Clip the middle pins over the rim at the top of the rear grille (fig 2.A).
 - 3.1.6 Push fit the other two pins at each side.
 - 3.1.7 Place the securing screw in bottom hole of front grille and secure with plastic lug fitting snugly against the rim of the rear grille (fig 2.B).
 - 3.1.8 Check that the grilles have been assembled correctly and that the fan will turn freely before plugging into the mains.
- If all is correct the fan is now ready to use.

3.2 FAN OPERATION

- 3.2.1 Use handle (fig 3.1) to carry the fan. Place in a suitable location and plug into the mains power supply.
- 3.2.2 Press button "1" (fig 3. 2) for normal fan speed operation, and buttons "2" for high fan output. To stop the fan press button "0".
- 3.2.3 To make the fan oscillate, push the oscillating knob (fig 3.3) on top of the motor casing. To stop the fan oscillating, pull the knob up.
- 3.2.4 To adjust the fan up or down, loosen the swivel knob (fig 3.4) position the head accordingly and tighten knob.

fig 1

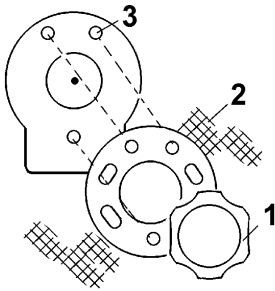


fig 2

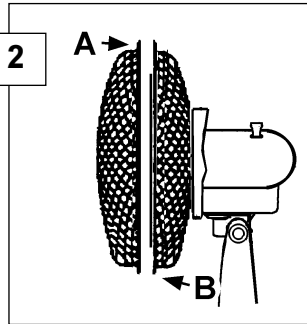
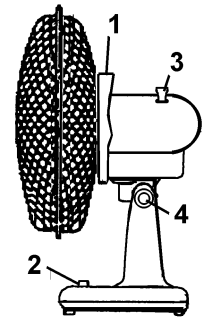
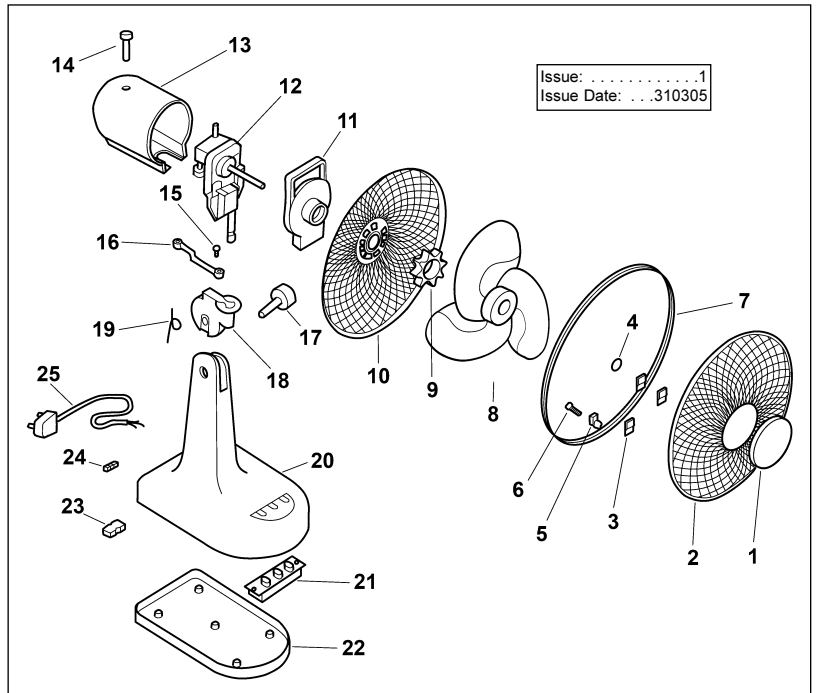


fig 3



4. PARTS LIST

ITEM	PART NO.	DESCRIPTION
01.	SDF10/01	GRILLE COVER
02.	SDF10/02	FRONT GRILLE
03.	SDF10/03	SPACER
04.	SDF10/04	BLADE RETAINING CLIP
05.	SDF10/05	FIXING LOCK
06.	SDF10/06	M4 SCREW
07.	SDF10/07	PLASTIC RING
08.	SDF10/08	BLADE
09.	SDF10/09	GRILLE LOCK NUT
10.	SDF10/10	REAR GRILLE
11.	SDF10/11	MOTOR BRACKET
12.	SDF10/12	MOTOR
13.	SDF10/13	MOTOR COVER
14.	SDF10/14	CLUTCH KNOB
15.	SDF10/15	SCREW
16.	SDF10/16	LINK ROD
17.	SDF10/17	ADJUSTMENT KNOB
18.	SDF10/18	HINGE
19.	SDF10/19	SPRING
20.	SDF10/20	BODY
21.	SDF10/21	PIANO SWITCH
22.	SDF10/22	BASE
23.	SDF10/23	TERMINAL BLOCK
24.	SDF10/24	CORD CLAMP
25.	CS 2.5M3CBLK	POWER CORD



NOTE: It is our policy to continually improve products and as such we reserve the right to alter data, specifications and component parts without prior notice. **IMPORTANT:** No liability is accepted for incorrect use of this equipment. **WARRANTY:** Guarantee is 12 months from purchase date, proof of which will be required for any claim. **INFORMATION:** For a copy of our latest catalogue and promotions call us on 01284 757525 and leave your full name and address, including postcode.

Declaration of Conformity

We, the sole importer into the UK, declare that the product listed here is in conformity with the following standards and directives.

250MM DESK FAN Model: SDF10

73/23/EEC Low Voltage Directive
89/336/EEC EMC Directive
98/37/EC Machinery Directive
93/68/EEC Marking Directive



The construction file for this product is held by the Manufacturer and may be inspected, by a national authority, upon request to Jack Sealey Ltd.

Signed by Mark Sweetman

31st March 2005

For Jack Sealey Ltd.
Sole importer into the UK
of Sealey Power Products.



Sole UK Distributor, Sealey Group, Bury St. Edmunds, Suffolk.

01284 757500

01284 703534



www.sealey.co.uk



sales@sealey.co.uk