

Thank you for purchasing a Sealey Product. Manufactured to a high standard this product will, if used according to these instructions and properly maintained, give you years of trouble-free performance



IMPORTANT: PLEASE READ THESE INSTRUCTIONS CAREFULLY. NOTE THE SAFE OPERATIONAL REQUIREMENTS, WARNINGS AND CAUTIONS. USE THIS PRODUCT CORRECTLY AND WITH CARE FOR THE PURPOSE FOR WHICH IT IS INTENDED. FAILURE TO DO SO MAY CAUSE DAMAGE AND/OR PERSONAL INJURY AND WILL INVALIDATE THE WARRANTY. PLEASE KEEP INSTRUCTIONS SAFE FOR FUTURE USE.

1. SAFETY INSTRUCTIONS

1.1 GENERAL SAFETY

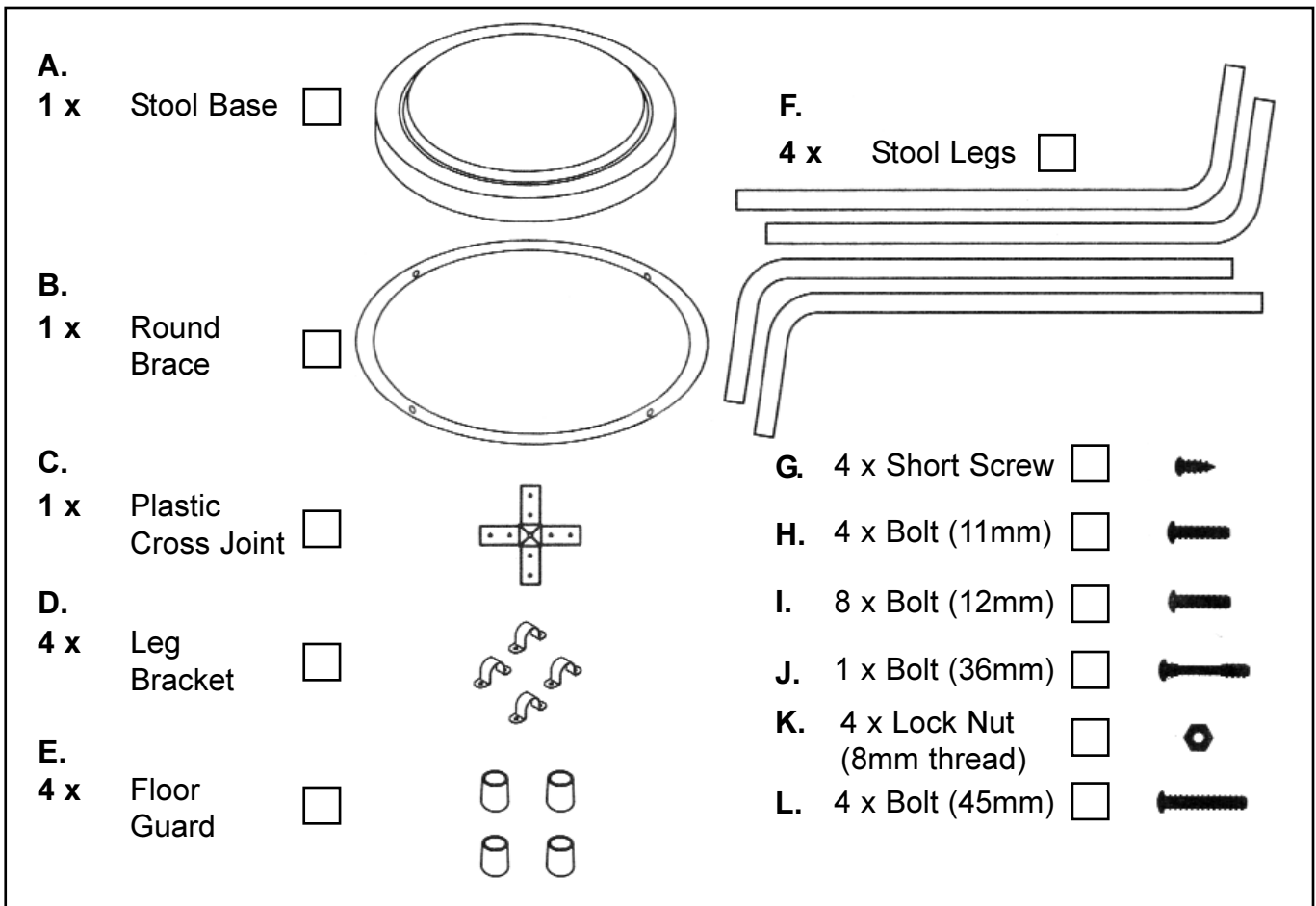
- WARNING!** Ensure Health & Safety, local authority, and general workshop practice regulations are adhered to when using this stool.
- Locate stool in a suitable working area.
- WARNING!** Use stool on level and solid ground, preferably concrete.
- Keep the stool clean and tidy in accordance with good workshop practice.
- DO NOT** use the stool for any purpose other than that for which it is designed.
- DO NOT** stand on the stool.
- DO NOT** use the stool outdoors.
- DO NOT** get the stool wet or use in damp or wet locations or areas where there is condensation.
- DO NOT** clean the stool with any solvents which may damage the paint surface or the protective coating on the padded seat base.

2. INTRODUCTION AND SPECIFICATION

Steel construction four legged stool. 630mm high - Ideal for use with Sealey workbenches. Capacity 300kg, weight 3.3kg.
Specifications:-

| | |
|-----------|-------|
| Height: | 630mm |
| Capacity: | 300kg |
| Weight: | 3.3kg |

3. PARTS CHECKLIST



4. ASSEMBLY

4.1 Tools Required:

For the assembly of the Workshop Stool you will require the following tools:

| | |
|----------------------|-------|
| Rubber Mallet | |
| Slotted Screwdriver | (5) |
| 8mm Spanner | |
| Phillips Screwdriver | (PH2) |

4.2 **Stool Pad:** Although the stool pad arrives attached to the stool base, the diagram below shows how to replace/fit the stool pad, if required.

4.3 **Diagram 1** shows the main construction of the stool support.

4.3.1 Start by knocking the four floor guards (E) onto the straight end of the stool legs (F), you may need to use a rubber mallet for this task.

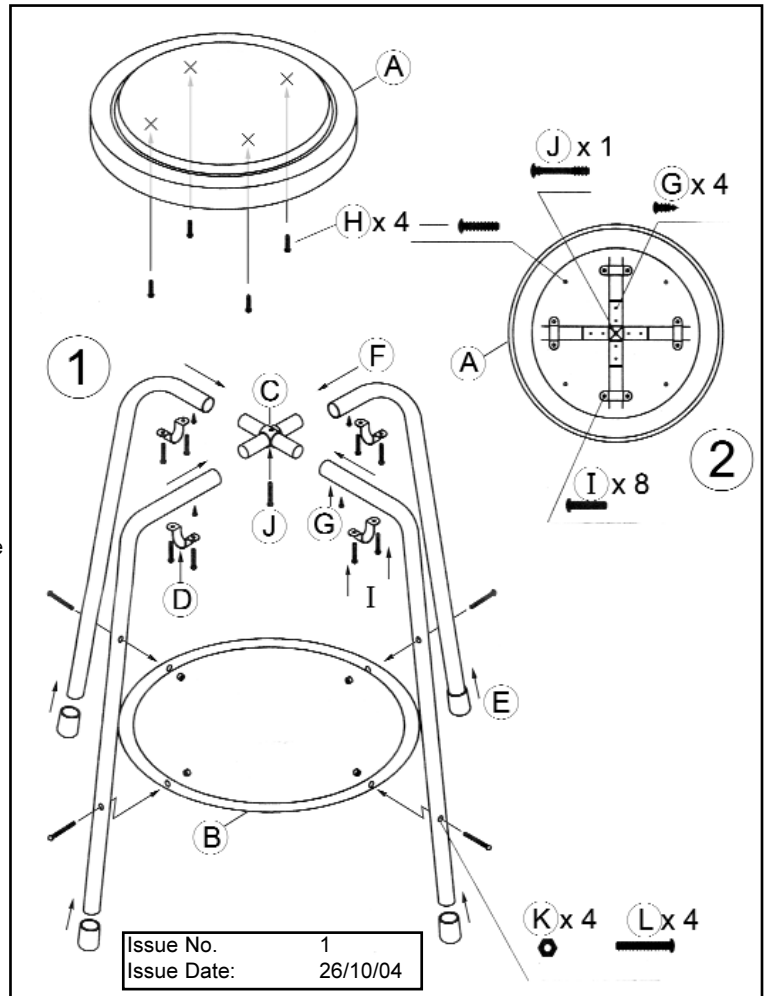
4.3.2 Next, slot the four legs into the plastic cross piece (C), lining up the screw holes. Secure using the short screws (G), through the outer holes. The most effective method is to hand tighten screws into the holes, then lay the construction on a surface with the legs pointing up, then continue to tighten using a phillips screwdriver.

4.3.3 Now, with the stool still upside-down, hold the round brace (B) in place, with the holes lined up, and push the 45mm bolts (L) through from the out side, once in place secure with the 8mm lock nuts (K). You will need to restrain the lock nuts using a spanner, whilst tightening the bolts with a Phillips screwdriver.

4.4.1 With reference to Diagram 2, proceed to place the stool pad face down on a surface and place stool support (upside-down), on top, lining up the legs between the pairs of bracket holes.

Now line the leg brackets (D) up with the pairs of holes and secure with the 12mm bolts (I).

4.4.2 Lastly, insert the 36mm (J) bolt into the central hole of the plastic cross piece and tighten with a slotted screw driver.



5. PARTS LIST

| ITEM | DESCRIPTION | PART No. | ITEM | DESCRIPTION | PART No. |
|------|---------------------|----------|------|-------------|----------|
| A. | STOOL TOP | SCR11/01 | G. | SHORT SCREW | SCR11/07 |
| B. | ROUND BRACE | SCR11/03 | H. | BOLT (11mm) | SCR11/08 |
| C. | PLASTIC CROSS PIECE | SCR11/05 | I. | BOLT (12mm) | SCR11/09 |
| D. | LEG BRACKET | SCR11/04 | J. | BOLT (36mm) | SCR11/10 |
| E. | FLOOR GUARD | SCR11/06 | K. | LOCK NUT | SCR11/12 |
| F. | STOOL LEG | SCR11/02 | L. | BOLT (45mm) | SCR11/11 |



Sole UK Distributor
Sealey Group,
Bury St. Edmunds, Suffolk.

01284 757500
01284 703534

www.sealey.co.uk
sales@sealey.co.uk