



INSTRUCTIONS FOR: ELECTRONIC COMBINATION FIREPROOF SAFES

MODEL Nos: **SCFS01, SCFS03**

Thank you for purchasing a Sealey product. Manufactured to a high standard this product will, if used according to these instructions and properly maintained, give you years of trouble free performance.

IMPORTANT: PLEASE READ THESE INSTRUCTIONS CAREFULLY. NOTE THE SAFE OPERATIONAL REQUIREMENTS, WARNINGS AND CAUTIONS. USE THIS PRODUCT CORRECTLY AND ONLY FOR ITS INTENDED PURPOSE. FAILURE TO DO SO MAY CAUSE DAMAGE AND/OR PERSONAL INJURY AND WILL INVALIDATE THE WARRANTY. RETAIN THESE INSTRUCTIONS FOR FUTURE USE.



Refer to instruction manual

1. SAFETY

- ❑ **WARNING!** These safes are heavy and care should be exercised in transit and handling to ensure that no one is injured.
- ❑ **WARNING!** Due to the fireproof concrete infill material both safes are a 2 man lift both for transit and installation.
- ✗ **DO NOT** install in areas where damp and condensation are present.

2. INTRODUCTION

Heavy-duty multi-walled fire proof safe injected with fire-proof foaming concrete offering up to 1hour fire resistance with UL approval. Finished with an anti-corrosion powder coating. Double safety lock requires both electronic access code and key to open the locking mechanism. Also includes 1 tray.

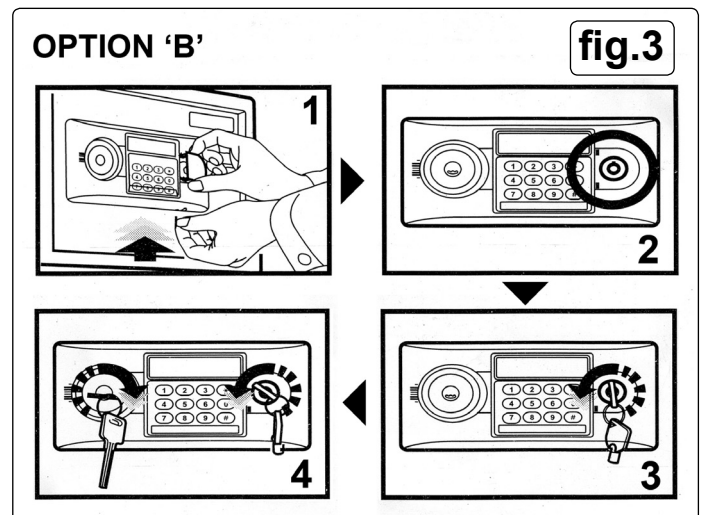
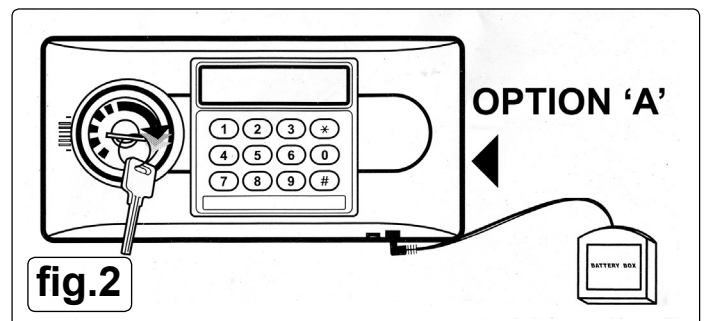
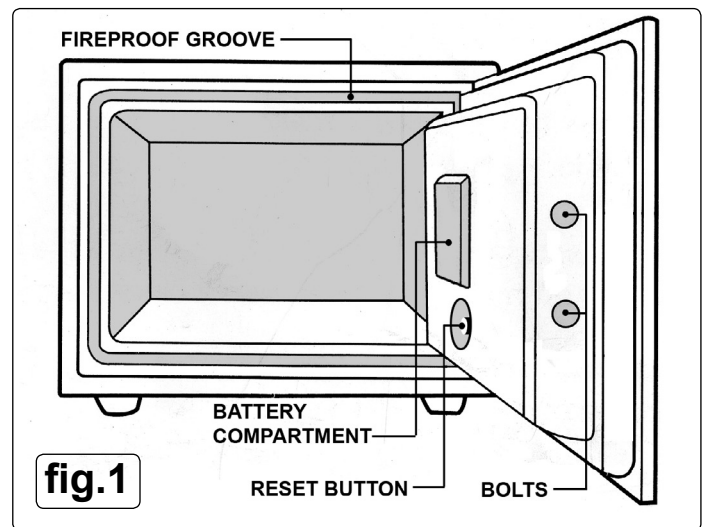
3. INSTALLATION

- 3.1 Careful consideration should be given to the siting of the safe to ensure that it is discreetly placed and not easily found by any intruders.
- 3.2 Appoint key holders for the two keys provided and discuss security arrangements for the safekeeping and availability of the keys.

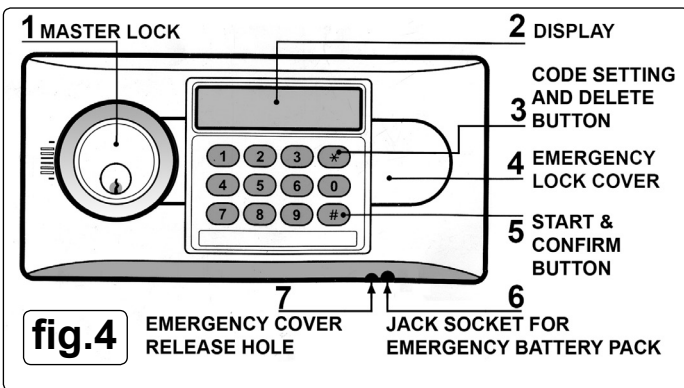
4. OPERATION

- 4.1 **First time opening of safe.** (You have two options available).
 - 4.1.1 **OPTION 'A'.** The safe is provided with an external battery box. Slide back the lid and insert 4 'AA' batteries into the box. Slide the lid closed again.
 - 4.1.2 Insert the jack plug into the jack socket in the lower edge of the keypad housing as shown in fig.2 Option 'A'. Press the hash '#' button to power up the electronic lock.
 - 4.1.3 Enter preset user code '1234' then press the hash '#' button again.
 - 4.1.4 Turn the master key clockwise to open the safe.
- 4.2 **OPTION 'B'.** Take the external battery box and insert the jack plug pin into the hole next to the jack plug socket to release the emergency lock cover. See fig.3, option 'B'(1).
 - 4.2.1 Insert the emergency key and turn it anti-clockwise. See fig.3, option 'B'(3).
 - 4.2.2 Insert the master key and turn it clockwise. See fig.3, option 'B'(4).
- ❑ **WARNING! Remove the emergency key immediately and keep it in a safe place. In the event of electronic circuit malfunction or loss of code you can still open the safe using OPTION 'B'. When the code is known you can open the safe using OPTION 'A' or OPTION 'B'.**
- 4.3 **Inserting the batteries.** Open the safe door to access the battery compartment in the back of the door.
 - 4.3.1 Unclip the compartment lid and insert 4 'AA' batteries into the compartment ensuring they are the right way round according to the plus '+' and minus '-' symbols moulded into the back of the compartment. Refix the lid in place.
 - 4.3.2 The display will flash 'ALL READY' while the system initiates and then goes into standby mode with the display showing the year, month and day, plus the day of the week and the time.

SERIAL NUMBER



- 4.4 Setting the date and time.** Whilst still in standby mode, press the star '*' button to enter set up mode causing the left hand value (year) to flash.
- 4.4.1 You must commence adjusting the display within 3 seconds, otherwise the display will revert to standby.
- 4.4.2 Press '8' to increase the value by one digit each time the button is pressed.
- 4.4.3 Press '0' to decrease the value by one digit each time the button is pressed.
- 4.4.4 To step to the next adjustable value press the hash '#' button.
- 4.5 Opening the door.** Press the hash '#' button causing the display to light up yellow, ready for code entry with a dotted line on the display.
- 4.5.1 Enter your four digit user code (or 8 digit master code) within seven seconds and press the hash '#' button again to confirm. If the code is correct the display colour will turn blue and the word 'OPEN' will be displayed.
- 4.5.2 Turn the master key clockwise (within ten seconds) to open the safe. Leave the key in the opened position, do not turn it back to vertical otherwise you will have to enter the code again to lock the door.
- 4.5.3 If the wrong code is entered the display will not change to blue and the word 'ERROR' is displayed.
- 4.6 Closing the door.** Close the door and turn the key anti-clockwise to lock the door.



- 4.7 Setting the user code.** The factory set user code is 1234. To change this to a new code do the following:-
- 4.7.1 Press the hash '#' button causing the display to light up yellow, ready for code entry with a dotted line on the display.
- 4.7.2 Enter your four digit user code within seven seconds and press the hash '#' button again to confirm. If the code is correct the display colour will turn blue and the word 'OPEN' will be displayed.
- 4.7.3 Now press the star '*' button within 7 seconds to display a dotted code entry line on the blue screen.
- 4.7.4 Enter your new user code and press the hash '#' button to confirm. The display will show the word 'INTO' to indicate that the new code has been stored.
- 4.8 Setting the master code.** The factory set, eight digit master code is 86729888. To change this to a new master code do the following:-
- 4.8.1 Press the hash '#' button causing the display to light up yellow, ready for code entry, with a dotted line on the display.
- 4.8.2 Enter your existing eight digit master code within seven seconds and press the hash '#' button again to confirm. If the code is correct the display colour will turn blue and the word 'OPEN' will be displayed.
- 4.8.3 Now press the star '*' button within 7 seconds to display a dotted code entry line on the blue screen.
- 4.8.4 Enter you new user code and press the hash '#' button to confirm. The display will show the word 'INTO' to indicate that the new code has been stored.

To return the safe to its factory settings, press the reset button on the back of the door. The display will show the word 'CLEAR' meaning that user set codes are lost and the factory codes are recalled.

- 4.9 Tracking door opening records** Open the door using the required code. When the word 'OPEN' disappears from the blue screen, immediately press '0'.
- 4.9.1 The display will show the last door opening record, i.e. year, month, date, hour, minute, week and code to open.

NOTE: When **PASS 1** is displayed this means the door was opened by the master code. When **PASS 2** is displayed this means the door was opened with the user code. Pressing '0' whilst **PASS 2** is displayed will show the last but one record. Each time a previous record is displayed '0' can be pressed again when **PASS 2** is on the screen to see the next stored record. This way, up to 14 records can be recalled.

- 4.10 Hiding the code when opening the safe.** If, when opening the safe you require the code not to be seen, you can add an extra step to the opening sequence. Press the hash '#' button as normal causing the display to light up yellow. Before entering the code, press the star '*' button. Now, when you enter the code it will not be displayed.

- 4.11 Alarm device.** If the wrong code is entered 3 times consecutively, the alarm will sound for 60 seconds. If the '0' button is pressed whilst the alarm is sounding the display will show 'BELL ON'. If the safe is attacked by shaking, striking or moving the alarm will sound for 60 seconds.

- 4.12 Replacement Keys.** Should you lose your keys we can supply replacements. To order these please contact our sales office on 01284 757500 and quote the unique serial number relating to your safe, this can be found on the front of this manual. We will also require a copy of your purchase invoice for the safe to confirm that you are the owner. Please note that replacement keys are special order only (we do not carry these in stock for security reasons) and as such they can take 14 – 28 days to arrive.



SCFS03 355 x 390 x 525

NOTE: It is our policy to continually improve products and as such we reserve the right to alter data, specifications and component parts without prior notice.

IMPORTANT: No liability is accepted for incorrect use of this product.

WARRANTY: Guarantee is 12 months from purchase date, proof of which will be required for any claim.

INFORMATION: For a copy of our latest catalogue and promotions call us on 01284 757525 and leave your full name and address, including postcode.



Sole UK Distributor, Sealey Group,
Kempson Way, Suffolk Business Park,
Bury St. Edmunds, Suffolk,
IP32 7AR

☎ 01284 757500

🌐 www.sealey.co.uk

☎ 01284 703534

✉ sales@sealey.co.uk