



Instructions for:
FOLDING WORKSHOP CRANE
 Model No: **SC10**

Thank you for purchasing a Sealey product. Manufactured to a high standard this product will, if used according to these instructions and properly maintained, give you years of trouble free performance.

⚠ IMPORTANT: PLEASE READ THESE INSTRUCTIONS CAREFULLY. NOTE THE SAFE OPERATIONAL REQUIREMENTS, WARNINGS & CAUTIONS. USE THE PRODUCT CORRECTLY AND WITH CARE FOR THE PURPOSE FOR WHICH IT IS INTENDED. FAILURE TO DO SO MAY CAUSE DAMAGE AND/OR PERSONAL INJURY AND WILL INVALIDATE THE WARRANTY. PLEASE KEEP INSTRUCTIONS SAFE FOR FUTURE USE.

1. SAFETY INSTRUCTIONS

- ✓ Keep crane, lifting slings, support and beams in good working order and condition. Follow the inspection requirements as described in Section 5. *Take immediate action to repair or replace damaged parts by contacting your supplier. Ensure that all accessory lifting devices are suitably certified. If crane is damaged, remove from service immediately.*
- ✓ Ensure the surface on which the crane is used is level, firm and capable of supporting the weight of the crane with maximum load. Never use the crane on tarmac or other soft surfaces.
- ✓ Ensure the crane legs and arms are locked before use.
- ✓ Keep children and unauthorised persons away from the working area.
- ✓ Keep working area clean and tidy, free from unrelated materials and ensure that there is adequate lighting.
- ✓ Ensure that load does not exceed the maximum lifting capacity of the crane. Overloading the crane is dangerous. Where appropriate, use only the lifting points recommended by the manufacturer of the item to be lifted, i.e. vehicle engine.
- ✓ Before lifting the load ensure that the crane jib is in the lowest practical position, that there are no obstacles which may snag the load whilst it is being lifted and that the area above the jib is clear.
- ✓ To avoid injury, be fully aware of your own and other persons locations in relation to the lifting, and lowering, of the load.
- ✓ Keep a sound footing and balance, and ensure the floor is not slippery.
- ✓ Ensure jib extension locking bolt and nut are in position before lifting.
- ✓ Ensure the centre of gravity always remains inside the crane base.
- x **DO NOT** harness the load at an angle.
- x **DO NOT** allow the load to swing during lifting.
- x **DO NOT** allow the load to drop suddenly. Lower load with care, ensuring that you are fully aware of the condition of the surface onto which the load is to be placed.
- x **DO NOT** operate the hydraulic power unit beyond its maximum stroke as indicated on the label.
- x **DO NOT** load crane beyond its rated capacity for each specified jib extension position as indicated in Section 2. The capacity of the crane reduces as the jib is extended.
- x **DO NOT** position any part of your body beneath the load.
- x **DO NOT** use the crane to move, or transport, a load around the workshop. The crane is a lifting device only.
- x **DO NOT** apply any sideways pressure to any part of the crane during lifting or when a load is suspended.
- x **DO NOT** attempt to adjust the safety valve, which has been set and sealed by the manufacturer.
- x **DO NOT** use this product to perform a task for which it is not designed.
- x **DO NOT** use whilst under the influence of drugs, alcohol or intoxicating medication.
- x **DO NOT** climb on the crane.
- ✓ When not in use fold the crane down and store in a safe, dry, childproof area.
- **WARNING! Failure to heed safety and warning instructions may result in damage and/or personal injury and will invalidate the warranty.**

2. SPECIFICATION

JIB POSITION:	1	2	3	4	Product Weight
Lifting Capacity (kg)	1000	750	500	250	80kg
Jib Extension Length (mm)	850	980	1070	1160	

3. ASSEMBLY INSTRUCTIONS

Unpack the product and check contents against the parts list in these instructions. Should there be any damaged or missing parts contact your supplier immediately. Assemble the crane as follows:

- 3.1. Lay out all the parts in the appropriate positions ready for assembly.
- 3.2. When assembling, ensure that you fit a plain washer, then a locking washer before fitting nuts onto bolts.
- 3.3. Assemble the crane main frame first, leaving the hydraulic ram assembly until last.
 Note: At this stage all nuts and bolts should be finger tight only.
- 3.4. Connect the base of the ram assembly to the ram assembly mounting.
- 3.5. Raise the lift arm and carefully move it until the ram fits the arm bracket. Engage the pin and secure with the fasteners provided.
- 3.6. Now tighten all the nuts and bolts on the main frame.
- 3.7. Carefully lay crane on its back on the floor the assembled main frame with the ram side facing up.
- 3.8. Assemble and insert the legs and locate with pins provided.
- 3.9. By using the handle, push the assembled crane into the working position so that all four wheels are in contact with the floor.
- 3.10. Before using crane place the pumping handle on the release valve and turn to the left. With the handle inserted in the pump socket, pump 10-15 times through the full stroke, thus bleeding, from the hydraulic system, any air which may have entered during transit.

4. OPERATING INSTRUCTIONS



NOTE: ENSURE YOU HAVE READ AND UNDERSTOOD THE SAFETY INSTRUCTIONS IN SECTION 1 BEFORE YOU OPERATE THE CRANE.

- 4.1. Using the pumping handle end, turn the release valve firmly to the right.
- 4.2. Put handle into pump socket and pump. The jib will move, continue to pump until the jib reaches the height at which the load can be secured.
- 4.3. Connect the crane hook to the load using a suitable certified sling or support beam. Ensure you are aware of the load weight, and check that it is within the capacity of the crane (at the jib extension you are using) and the sling or support beam. When removing engines ensure you know the weight to be lifted. Use only the lifting points recommended by the vehicle manufacturer.
- 4.4. Lift only from directly above the load. **WARNING! DO NOT LIFT THE LOAD AT AN ANGLE!**
- 4.5. To lower load, position handle on release valve at base of ram and turn *VERY SLOWLY anti-clockwise* avoiding any sudden movement. **WARNING!** Do not allow the load to drop suddenly.
- 4.6. The crane is not a transportation device but may be used to reposition the load being worked on. To do so, lower load and jib with care, to the lowest possible point before attempting to move. Do not try to move crane in a sideways direction. The crane is not designed to support the load indefinitely. When you have repositioned the load, lower the load onto a secure and appropriate working base, being fully aware of your own and other persons locations in relation to the lowering load.
- 4.7. When load has been secured, remove lifting sling, support beam etc. and place crane in a safe location with lifting beam fully lowered.

5. MAINTENANCE

NOTE: The crane **MUST** be kept clean and dry and must be maintained in accordance with these instructions.

5.1. Lubrication

- 5.1.1. Oil all working parts monthly.
- 5.1.2. The ram is filled with oil and should only require occasional topping up. For the occasional top up **DO NOT** use brake fluid, as this will damage the hydraulic seals. Proceed as follows:
 - a) Use only good quality hydraulic jack oil available from your supplier.
 - b) **DO NOT OVERFILL** as this will cause failure.
 - c) After filling with hydraulic oil, pump the crane up to full height and pour off any excess oil.

5.2. Inspection of crane before use

- 5.2.1. Before each use of the crane you must make a visual inspection for leaks, damage, loose or missing parts.
- 5.2.2. The workshop crane must be inspected immediately if it has been subject to an abnormal load or shock. It is recommended that such an inspection is made by an authorised service agent.
- 5.2.3. The owner and/or operator must be aware that repair of this equipment will require specialised knowledge and facilities. It is recommended that an annual inspection of the workshop crane is made by an authorised service agent.

5.3. Storage

Always store the crane fully closed so that the jib is in lowest position and the ram is closed.

6. OWNER'S & OPERATOR'S RESPONSIBILITIES

The owner and/or operator shall study these instructions and retain them for future use.

6.1. Understanding instructions and warnings.

The owner and/or operator shall understand the operating instructions and warnings before operating the crane. Warning information must be emphasised and understood. If the operator is not fluent in English, the product instructions and warnings must be read to, and discussed with, the operator in the operator's native language by the owner, making sure the operator understands the contents.

6.2. Damaged Cranes.

Any crane which appears to be damaged, badly worn, or operates abnormally **MUST BE REMOVED FROM SERVICE!** It is recommended that necessary repairs be made by an authorised service agent.

6.3. End of service

Through years of normal wear, the crane will eventually become unserviceable. When this happens ensure the hydraulic oil is drained off and disposed of in accordance with local authority regulations.

6.4. Test Certificate.

According to requirements of the UK Health and Safety Executive, a test certificate is packed with this crane. The test certificate is valid for one year from the date of first placing the crane into use. Your insurance company will want to have a copy of the test certificate for their file. Additional copies of the test certificate can be purchased within one year of the date of purchase. If you need a copy please ask your supplier. After one year your insurance company has the right to request a re-test of the crane. This is a chargeable service and can be obtained by contacting companies listed under "Lifting Gear" in Yellow Pages.

CRANE GUARANTEE

Your crane is guaranteed for one year from the date of purchase. The Guarantee does not cover faults caused by incorrect use, lack of maintenance, accidental damage or damage caused to third parties through misuse. You are recommended to inform your insurers and check that adequate cover is in place. Warranty claims must be supported by a copy of the dated purchase receipt.

Declaration of Conformity

Folding Workshop Crane. Model No: SC10

98/37/EC Docks Regulations 1934, 18a 22a EN292-2

Model No: **SC10**

Serial No:

Batch No:

We, the sole importer into the UK, declare that the product listed below is in conformity with the following standards and directives.



The construction file for this product is held by the Manufacturer and may be inspected, by a national authority, upon request to Jack Sealey Ltd.

Signed by Mark Sweetman

20th November 2000

For Jack Sealey Ltd. Sole importer into the UK of Sealey Power Products.

NOTE: It is our policy to continually improve products and as such we reserve the right to alter data, specifications and component parts without prior notice.

IMPORTANT: No liability is accepted for incorrect use of product.

WARRANTY: Guarantee is 12 months from purchase date, proof of which will be required for any claim.

INFORMATION: For a copy of our latest catalogue and promotions call us on 01284 757525 and leave your full name and address, including postcode.



Sole UK Distributor,
Sealey Group,
Bury St. Edmunds, Suffolk.

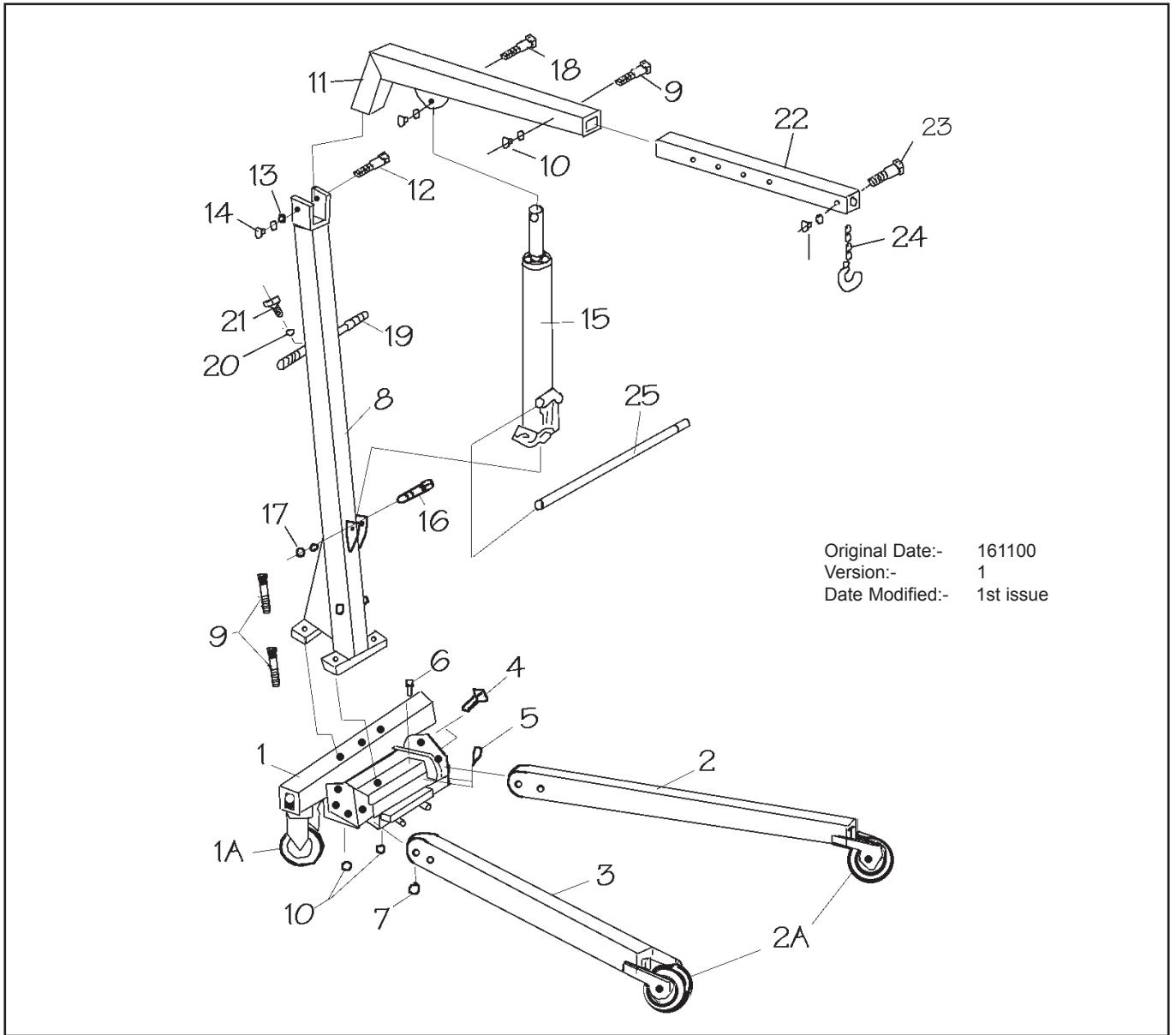


01284 757500



01284 703534

E-mail: sales@sealey.co.uk



Original Date:- 161100
Version:- 1
Date Modified:- 1st issue

Item	Part No.	Description	Qty
1	NC10/01	Frame Base (Red)	1
1A	NC10/01A	Castor Wheel	2
2	NC10/02	Leg, Left (Red)	1
2A	NC10/02A	Front Wheel Asm	2
3	NC10/03	Leg, Right (Red)	1
4	NC10/04	Pin, Lock	4
5	NC10/05	Pin, Hair	4
6	NC10/06	Bolt, M6	1
7	NC10/07	Nut, M6	1
8	NC10/08	Post, Main Support (Red)	1
9	NC10/09	Bolt	6
10	NC10/10	Nut & Washer M14	7
11	NC10/11	Jib, Main (Red)	1
12	NC10/12	Bolt, M15	1

Item	Part No.	Description	Qty
13	NC10/13	Washer	1
14	NC10/14	Nut, M18	1
15	NC10/15	Hydraulic Unit	1
16	NC10/16	Bolt, M16	1
17	NC10/17	Nut & Washer, M16	2
18	NC10/18	Bolt	1
19	NC10/19	Handle	1
20	NC10/20	Washer	1
21	NC10/21	Bolt, M5	4
22	NC10/22	Extension Jib	1
23	NC10/23	Bolt, M14	1
24	NC10/24	Hook & Chain Assy	1
25	NC10/25	Handle, Pumping	1