




INSTRUCTIONS FOR:

2 DOOR FLOOR CABINET

MODEL No: **SC01**

Thank you for purchasing a Sealey product. Manufactured to a high standard this product will, if used according to these instructions and properly maintained, give you years of trouble free performance.

 **IMPORTANT: PLEASE READ THESE INSTRUCTIONS CAREFULLY. NOTE THE SAFE OPERATIONAL REQUIREMENTS, WARNINGS & CAUTIONS. USE THE PRODUCT CORRECTLY AND WITH CARE FOR THE PURPOSE FOR WHICH IT IS INTENDED. FAILURE TO DO SO MAY CAUSE DAMAGE AND/OR PERSONAL INJURY, AND WILL INVALIDATE THE WARRANTY. PLEASE KEEP INSTRUCTIONS SAFE FOR FUTURE USE.**

1. SAFETY INSTRUCTIONS

1.1 GENERAL SAFETY

- WARNING!** Ensure Health & Safety, local authority, and general workshop practice regulations are adhered to when using this cabinet.
- WARNING!** Use caution when handling and assembling the metal components. The metal may have sharp edges or corners, the use of protective gloves is recommended.
- Locate cabinet in a suitable working area and secure to a wall with suitable fasteners.
- Keep the work area clean, uncluttered and ensure there is adequate lighting.
- Keep the cabinet clean and tidy in accordance with good workshop practice.
- Keep children and unauthorised persons away from the working area.
- DO NOT** climb, step or stand on the cabinet shelves.
- DO NOT** use the cabinet for any purpose other than that for which it is designed.
- DO NOT** use in damp work areas.
- WARNING!** The warnings, cautions and instructions referred to in this instruction manual cannot cover all possible conditions and situations that may occur. It must be understood that common sense and caution are factors which cannot be built into this product, but must be applied by the operator.



2. INTRODUCTION

Featuring two large doors, four shelves and base storage. Added security provided by cylinder lock and supplied with two keys. All steel construction, stabilized by an inner cross member.

Overall Size (W x D x H):	915 x 457 x 1981mm
---------------------------	--------------------

3. ASSEMBLY

3.1 CONTENTS INSPECTION

Unpack all the parts and layout on the packing material. Visually inspect all panels to check for transportation damage.

CONTENTS	
A	BACK PANEL (RIGHT)
B	BACK PANEL (LEFT)
C	SIDE PANEL (RIGHT)
D	SIDE PANEL (LEFT)
E	CROSS MEMBER (INNER)
F	CROSS MEMBER (OUTER)
G	BOTTOM PANEL
H	TOP PANEL
I	DOOR PANEL WITH LOCK (RIGHT)
J	DOOR PANEL (LEFT)
K	SHELF
L	PLASTIC INSERT
M	HINGE INSERT
N	RUBBER BUMPER
O	SCREW (M6 X 15)
P	WASHER
Q	SHELF CLIP
R	KEY

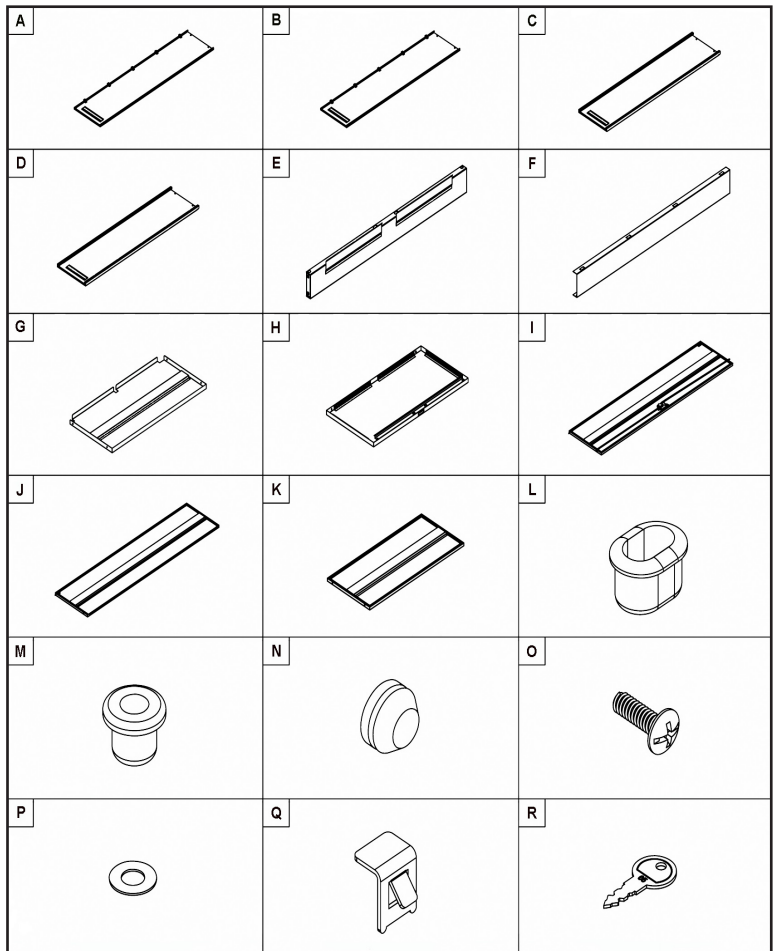
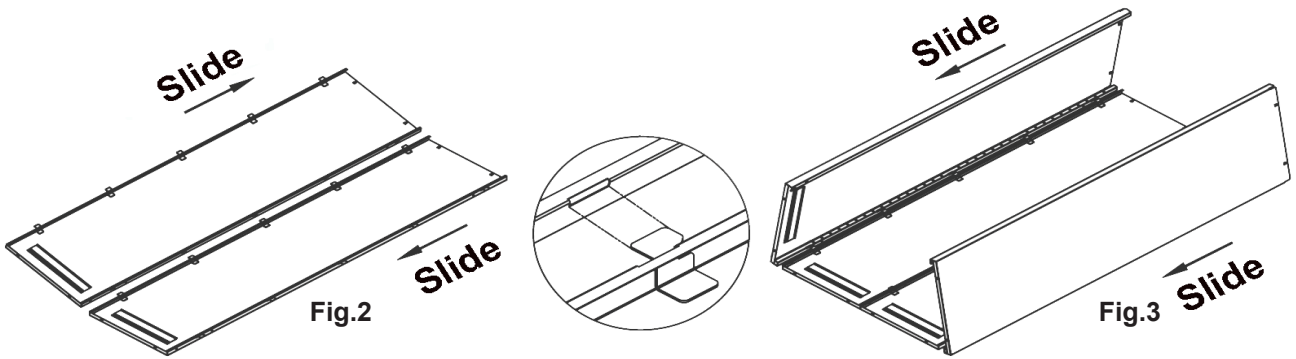


Fig.1

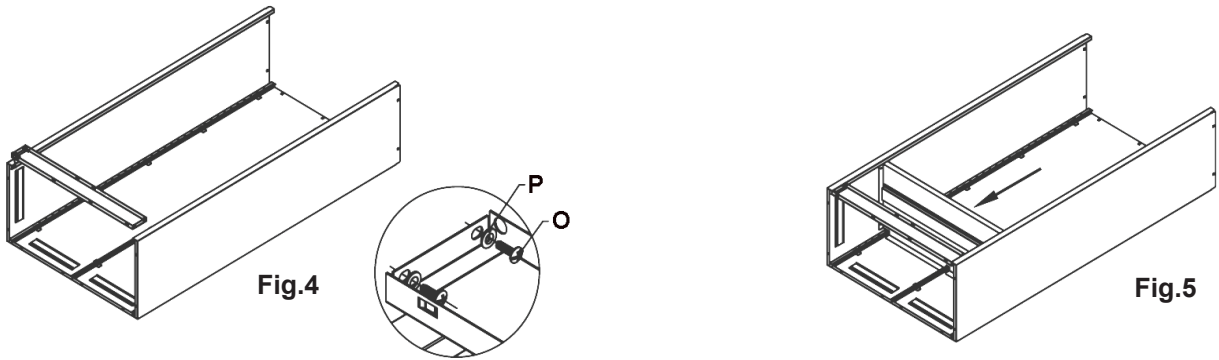


3.2 BACK ASSEMBLY (Fig.2)

- 3.2.1 Place the back panels (A & B) on a suitably protected flat surface to prevent scratching.
- 3.2.2 Interlock the tabs into the slots on the back panels and slide together until the two panels are fully engaged.

3.3 SIDE ASSEMBLY (Fig.3)

- 3.3.1 Hold the side panels (C & D) at a slight angle and fit the tabs on the back panels into the slots of the side panels and slide down to engage.



3.4 INNER CROSS MEMBER ASSEMBLY (Fig.4)

- 3.4.1 Insert the cross member (E) as shown in Fig.4 and secure using screws (O) and washers (P).

3.5 BASE ASSEMBLY (Fig.5)

- 3.5.1 Slide the base (G) into position and locate onto the tabs on the back and side panels. The front edge fits over the inner cross member.



3.6 OUTER CROSS MEMBER ASSEMBLY (Fig.6)

- 3.6.1 Fit the outer cross member (F) and secure with the two plastic oval inserts (L) and two hinge inserts (M).

3.7 TOP ASSEMBLY (Fig.7)

- 3.7.1 Fit the top (H) to the cabinet and push down until the tabs lock into position, fit two plastic oval inserts (L) and two hinge inserts (M) as shown in Fig.7. With the aid of another person carefully lift the cabinet from the top into an upright position.

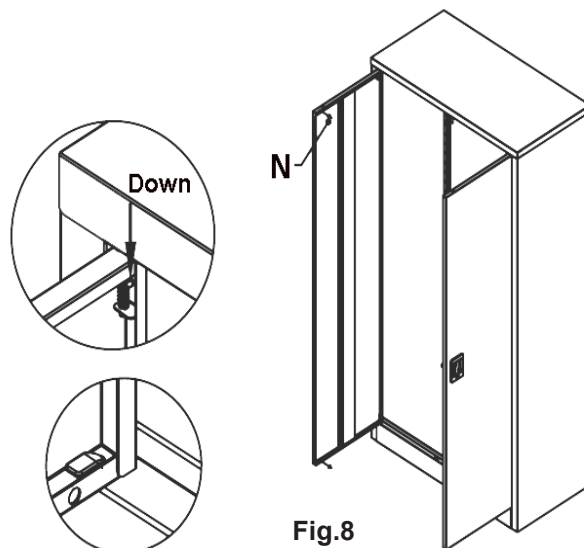


Fig.8

3.8 DOORS ASSEMBLY (Fig.8)

- 3.8.1 Locate the bottom door pin into the lower bush and pull down the spring loaded top pin and align with the bush in the top panel, release the pin to locate. Repeat with the other door.
- 3.8.2 Fit the rubber bumpers (N) as shown in Fig.8 to the left hand door.

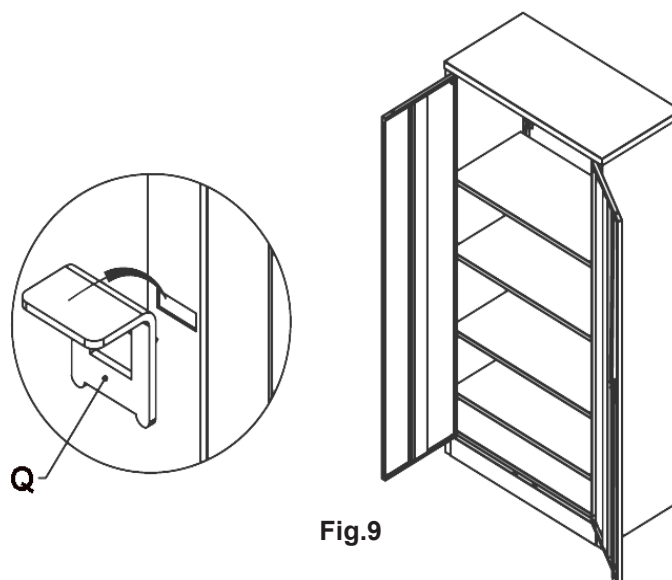


Fig.9

3.9 SHELF ASSEMBLY (Fig.9)

- 3.9.1 Insert shelf clips (Q) at the desired height for each shelf and lay the shelves onto the clips.
- 3.10 Use a mild solution of detergent and water and wipe the unit down with a soft cloth.

Parts support is available for this product.

To obtain a parts list and diagram please log on to www.sealey.co.uk, email sales@sealey.co.uk or phone 01284 757500

NOTE: It is our policy to continually improve products and as such we reserve the right to alter data, specifications and component parts without prior notice.

IMPORTANT: No liability is accepted for incorrect use of this product.

WARRANTY: Guarantee is 12 months from purchase date, proof of which will be required for any claim.

INFORMATION: For a copy of our catalogue and latest promotions call us on 01284 757525 and leave your full name, address and postcode.



Sole UK Distributor
Sealey Group,
Bury St. Edmunds, Suffolk.

