



# SHOT BLAST CABINET WITH GUN

640mm x 490mm x 490mm

MODEL NO: **SB951.V5**

Thank you for purchasing a Sealey product. Manufactured to a high standard, this product will, if used according to these instructions, and properly maintained, give you years of trouble free performance.

**IMPORTANT:** PLEASE READ THESE INSTRUCTIONS CAREFULLY. NOTE THE SAFE OPERATIONAL REQUIREMENTS, WARNINGS & CAUTIONS. USE THE PRODUCT CORRECTLY AND WITH CARE FOR THE PURPOSE FOR WHICH IT IS INTENDED. FAILURE TO DO SO MAY CAUSE DAMAGE AND/OR PERSONAL INJURY AND WILL INVALIDATE THE WARRANTY. KEEP THESE INSTRUCTIONS SAFE FOR FUTURE USE.



Refer to instructions



Wear eye protection



Wear protective clothing



Keep away from rain

## 1. SAFETY

### 1.1. ELECTRICAL SAFETY

- ❑ **WARNING!** It is the user's responsibility to check the following:

Check all electrical equipment and appliances to ensure that they are safe before using. Inspect power supply leads, plugs and all electrical connections for wear and damage. Sealey recommend that an RCD (Residual Current Device) is used with all electrical products. You may obtain an RCD by contacting your local Sealey dealer.

If the product is used in the course of business duties, it must be maintained in a safe condition and routinely PAT (Portable Appliance Test) tested.

Electrical safety information, it is important that the following information is read and understood.

- 1.1.1. Ensure that the insulation on all cables and on the appliance is safe before connecting it to the power supply.
- 1.1.2. Regularly inspect power supply cables and plugs for wear or damage and check all connections to ensure that they are secure.
- 1.1.3. **Important:** Ensure that the voltage rating on the appliance suits the power supply to be used and that the plug is fitted with the correct fuse - see fuse rating in these instructions.

- \* **DO NOT** pull or carry the appliance by the power cable.
- \* **DO NOT** pull the plug from the socket by the cable. Remove the plug from the socket by maintaining a firm grip on the plug.
- \* **DO NOT** use worn or damaged cables, plugs or connectors. Ensure that any faulty item is repaired or replaced immediately by a qualified electrician.

- 1.1.4. This product is fitted with a BS1363/A 13 Amp 3 pin plug.  
If the cable or plug is damaged during use, switch the electricity supply and remove from use.  
Replace a damaged plug with a BS1363/A 13 Amp 3 pin plug. If in doubt contact a qualified electrician.

Class II products are wired with live (brown) and neutral (blue) only are marked with the Class II symbol;

- A) Connect the BROWN live wire to the live terminal 'L'.
- B) Connect the BLUE neutral wire to the neutral terminal 'N'.
- C) After wiring, check that there are no bare wires and ensure that all wires have been correctly connected.



Ensure that the cable outer sheath extends inside the cable restraint and that the restraint is tight.

- \* **DO NOT** connect either wire to the earth terminal.  
Sealey recommend that repairs are carried out by a qualified electrician.

### 1.2. REGARDING DIRECT MAINS POWER USE WITH THE TRANSFORMER PLUG.

**You must** also read and understand the following instructions concerning electrical safety.

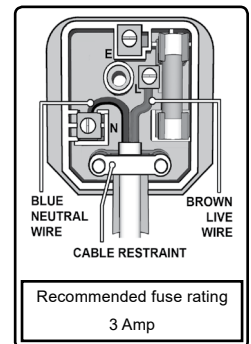
- 1.2.1. **The Electricity At Work Act 1989** requires all portable electrical appliances, if used on business premises, to be tested a qualified electrician, using a Portable Appliance Tester (PAT), at least once a year.
- 1.2.2. **The Health & Safety at Work Act 1974** makes owners of electrical appliances responsible for the safe condition of the appliance and the safety of the appliance operator. **If in any doubt about electrical safety, contact a qualified electrician.**

### 1.2.3. You must ensure that you:

- ✓ Inspect the transformer plug, cable, and plug for wear and damage to ensure items are safe before connecting to the mains power supply. If worn or damaged **DO NOT** use and immediately replace, or contact a qualified electrician.
- ✓ Check cables are always protected against short circuit and overload.
- ❑ **IMPORTANT:** Check that the voltage marked on the transformer plug is the same as the power supply to be used.
- ✓ Uncoil the lead from the transformer before use.
- \* **DO NOT** attempt to pull the transformer plug from the mains socket by the lead.
- \* **DO NOT** use any other type of transformer with the cabinet.
- \* **DO NOT** try to open or dismantle the transformer plug or charging base.
- \* **DO NOT** use the transformer plug to power any other electrical item.
- \* **DO NOT** get the transformer wet, or use in wet, damp conditions (for indoor use only).
- ❑ **WARNING! NEVER** substitute a standard 13 amp 3 pin plug, or any other type of plug, for the transformer plug .

### 1.3. GENERAL SAFETY

- ❑ **WARNING!** Ensure Health & Safety, government and local authority regulations relating to the use of shot blasting are adhered to when using this equipment. Familiarise yourself with the applications, limitations and potential hazards peculiar to the cabinet.
- ❑ **WARNING!** Disconnect the cabinet from the mains power and the air supply before attempting to change accessories or carry out any servicing or maintenance.



- ✓ Maintain the cabinet in good condition Replace or repair damaged parts. Use genuine parts only. Unauthorised parts may be dangerous and will invalidate the warranty.
- ✓ Locate cabinet in a suitable work area and keep area clean, tidy and free from unrelated materials. Ensure there is adequate lighting.
- ✓ Use only dry abrasives such as proprietary brands of glass beads, silicon carbide, aluminium oxide and silica sand. We recommend Sealey item B5KG. Never use fluids or mix fluids with another media in the unit.
- ☐ **WARNING!** Always wear coveralls, approved eye or face and when operating the cabinet.
- ✓ Keep the unit lid closed and secured when in use.
- ☐ **WARNING!** Ensure correct air pressure is maintained and not exceeded. (Max 90psi).
- ✓ Always keep the blast nozzle directed at the workpiece. Never use outside the unit and always use with the lid closed.
- ✓ Regularly check that the exhaust vent at the back of the cabinet is clear and not blocked and that there is space between it and any wall.
- ✓ Ensure the floor is clean and free from blasting media spillage; use a type "H" vacuum cleaner with a hepa filter.
- ✓ Keep children and non-essential persons away from the work area.
- ✓ When not in use disconnect from the electrical mains and the air supply.
- ✗ **DO NOT** clean up media spillage with a brush or compressed air.
- ✗ **DO NOT** use the cabinet for a task it is not designed to perform.
- ✗ **DO NOT** operate the cabinet if any parts are damaged or missing as this may cause failure and/or personal injury.
- ✗ **DO NOT** operate the cabinet with the lid open.
- ✗ **DO NOT** stand on the cabinet.
- ✗ **DO NOT** get the cabinet wet or use in damp or wet locations or areas where there is condensation.
- ✗ **DO NOT** operate the cabinet when you are tired or under the influence of alcohol, drugs or intoxicating medication.
- ✗ **DO NOT** leave the cabinet operating unattended.

## 2. INTRODUCTION

Steel cabinet with replaceable viewing screen and internal illumination. Fitted with shot blasting gun and suitable for proprietary brands of glass beads, silicon carbide, aluminium oxide and silica sand only. Excellent for a wide variety of workshop and bodyshop cleaning applications. Requires a standard, dry workshop air supply. Supplied assembled and ready for use.

## 3. SPECIFICATION

Model No: ..... SB951  
 Air Consumption: ..... 12cfm  
 Door Size: ..... 530 x 440mm  
 Doors: ..... 1  
 Inlet Size: ..... 1/4" BSP  
 Nett Weight: ..... 15.99Kg  
 Operating Pressure: ..... 90psi  
 Overall Dimensions (W x D x H): ..... 640 x 490 x 490mm  
 Viewing Area: ..... 490 x 395mm

## 4. ASSEMBLY

### 4.1. AIR SUPPLY FIG.1

4.1.1. You will require an air pressure of 60-90psi, and an air volume of 12cfm to operate the unit efficiently.

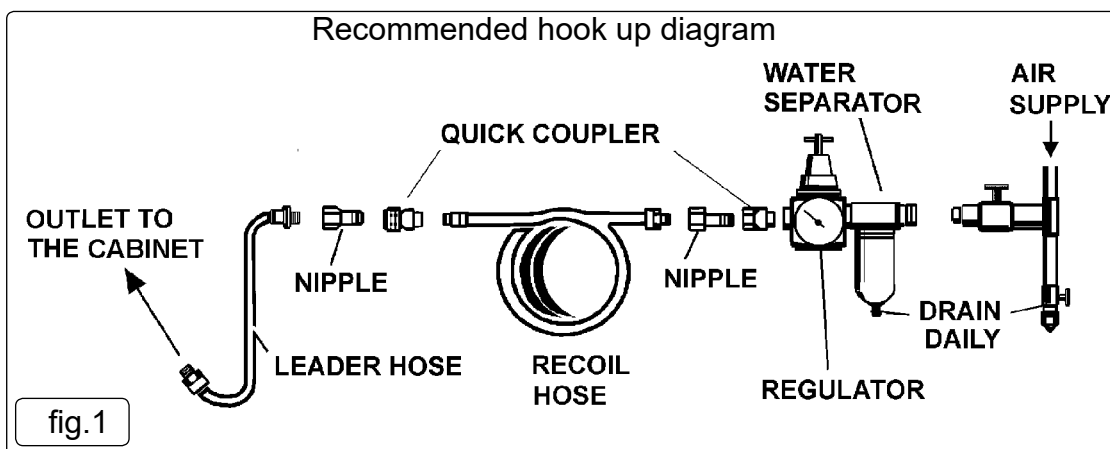
- ☐ **WARNING! Ensure air supply is clean, dry and does not exceed 90psi. Too high an air pressure and/or unclean or damp air will shorten the product life due to excessive wear and may be dangerous, causing possible damage and/or personal injury.**

4.1.2. Drain the air supply tank daily. Clean compressor air inlet filter weekly. For recommended hook-up see diagram below.

4.1.3. Line pressure should be increased to compensate for unusually long air hoses (over 8 metres). The **minimum** hose and fittings bore should be 10mm.

4.1.4. Keep hoses away from heat, oil and sharp edges. Check hoses for wear and poor connections.

4.1.5. Cabinet input connection is 1/4" BSP.



**Note:** Numbers in brackets refer to item numbers shown in the associated Parts List.

### 4.2. ASSEMBLY

4.2.1. Unpack the product and check contents. Should there be any damaged or missing parts contact your supplier immediately.

4.2.2. Push plastic suction hose (14) onto small diameter end of steel suction tube (15). Fit suction tube (15) under clips in base of cabinet.

4.2.3. Remove fitting (18) and one steel washer (17) from air hose connector (16), leaving on one steel washer (17) and rubber washer.

Put connector (16) through hole in side of cabinet and secure with washer (17) and fitting (18).

- 4.2.4. Remove blanking plug from rear panel arrow "A" Fig.2.
- 4.2.5. Fit screen (23) into cabinet with angled corner to rear right hand side, to allow suction hose (14) through.

## 5. OPERATION

- ☐ **WARNING! Ensure you read, understand and apply safety instructions in Section 1 before using the unit.**
- NOTE!** We strongly recommend that a suitable dust extraction system is used with this unit. If dust extraction is not used, media may be forced out of the joints as pressure builds up. You can alleviate this to some extent by removing the white blanking plug (Fig.2) situated on the upper left corner at the rear of the tank when viewed from the front. This however, will not substitute for a suitable dust extraction system.
- 5.1. Connect the air supply to the inlet on the side of the cabinet. Ensure the gun valve is in the "off" position before connecting the air supply.
  - 5.2. Check all fittings to ensure there are no air leaks.
  - 5.3. Pour the abrasive media into the centre of the cabinet. **DO NOT** use more than 10lbs (4.5kg). Excessive amounts of abrasive will impair visibility, create poor blasting performance and could block the air exhaust.
  - 5.4. The unit is supplied with four ceramic nozzles being 4, 5, 6, & 7mm hole diameter respectively. The choice of nozzle depends on the size of the blasting media. Coarse media should be used with the larger nozzles, fine media should be used with the smaller nozzles. To fit a new nozzle, unscrew the nozzle retaining ring, remove the existing nozzle and replace with the new one.
  - 5.5. Plug the transformer into mains socket and transformer lead plug into light switch box and the unit is ready for use.
  - 5.6. Place the workpiece in the cabinet and close and latch the lid securely.
  - ☐ **WARNING! Failure to securely close the lid could result in damage and/or personal injury.**
  - 5.7. Turn on light and air supply and insert hands into cabinet gloves. Grasp gun and depress the trigger to start the blasting process.
  - 5.8. Move the blast media (which looks like steam) continuously over the workpiece in an even and circular motion. To avoid undesirable peening the flow should not be too hard or concentrated. The surface finish may vary from coarse to fine depending on the size of the abrasive media. On delicate workpieces, to avoid unnecessary peening or excessive abrasion, begin the blasting with a low airflow.

Part view on arrow "A"  
showing white blanking plug.  
(See note in Operating Instructions)



## 6. MAINTENANCE

- ☐ **WARNING! Ensure the cabinet is disconnected from the electrical mains and the air supply before attempting any maintenance.**
- 6.1. Ensure the blasting media does not become damp. Keep the air supply dry at all times. Dispose of any damp media.
  - 6.2. Replace media when it has become excessively dusty, loses its granular or spherical appearance, or is significantly contaminated with debris from workpieces. This is usually noticed when media from the nozzle looks like a smoke cloud rather than steam.
  - 6.3. Regularly check that the exhaust vents at the side and rear of the cabinet are clear.
  - 6.4. Regularly check gun blast nozzle to ensure it does not become blocked with media. Immediately replace worn or damaged nozzle.
  - 6.5. If abrasive pick-up hose becomes blocked, cover the gun tip to force air back through the hose. Ensure the lid is correctly closed.
  - 6.6. Replace the transparent protective sheet on the underside of the Perspex window when visibility becomes reduced.

## 7. TROUBLESHOOTING

PROBLEM	POSSIBLE CAUSE	REMEDY
Excessive dust cloud in the cabinet.	<ol style="list-style-type: none"> <li>1. Exhaust vent or air flow is blocked.</li> <li>2. Abrasive is worn.</li> <li>3. Too much abrasive in the cabinet</li> <li>4. Loose air line or fittings.</li> </ol>	<ol style="list-style-type: none"> <li>1. Clean vent and keep vent away from any wall. Connect to a suitable dust extraction system.</li> <li>2. Replace.</li> <li>3. Remove excess with a type "H" vacuum cleaner.</li> <li>4. Check and tighten all air fittings.</li> </ol>
Uneven blasting.	<ol style="list-style-type: none"> <li>1. Too much abrasive in cabinet.</li> <li>2. Moisture inside cabinet.</li> </ol>	<ol style="list-style-type: none"> <li>1. Remove excess with a type "H" vacuum cleaner.</li> <li>2. Check air line for moisture.</li> </ol>
Inadequate speed or efficiency of blast.	<ol style="list-style-type: none"> <li>1. Abrasive is worn.</li> <li>2. Pressure is too low.</li> </ol>	<ol style="list-style-type: none"> <li>1. Replace.</li> <li>2. Check that there are no supply blockages or leaks. Increase pressure. Max:90psi</li> </ol>
Static electricity.	<ol style="list-style-type: none"> <li>1. Dry weather conditions.</li> </ol>	<ol style="list-style-type: none"> <li>1. Leave the workpiece to stand for a while.</li> </ol>
Blast pattern too wide or ineffective.	<ol style="list-style-type: none"> <li>1. Nozzle blocked or worn.</li> </ol>	<ol style="list-style-type: none"> <li>1. Unblock or replace nozzle</li> </ol>



### ENVIRONMENT PROTECTION

Recycle unwanted materials instead of disposing of them as waste. All tools, accessories and packaging should be sorted, taken to a recycling centre and disposed of in a manner which is compatible with the environment. When the product becomes completely unserviceable and requires disposal, drain any fluids (if applicable) into approved containers and dispose of the product and fluids according to local regulations.



### WEEE REGULATIONS

Dispose of this product at the end of its working life in compliance with the EU Directive on Waste Electrical and Electronic Equipment (WEEE). When the product is no longer required, it must be disposed of in an environmentally protective way. Contact your local solid waste authority for recycling information.

**Note:** It is our policy to continually improve products and as such we reserve the right to alter data, specifications and component parts without prior notice.

**Important:** No Liability is accepted for incorrect use of this product.

**Warranty:** Guarantee is 12 months from purchase date, proof of which is required for any claim.

Sealey Group, Kempson Way, Suffolk Business Park, Bury St Edmunds, Suffolk. IP32 7AR



01284 757500



01284 703534



sales@sealey.co.uk



www.sealey.co.uk



# EC DECLARATION OF CONFORMITY

Description and Function: **Shot Blast Cabinet with Gun 640 x 490 x 490mm**

Model/Type: **SB951 v5**

Manufacturing Date/Serial Number where applicable: .....

2014/30/EU EMC Directive

2014/35/EU Low Voltage Directive

2011/65/EU RoHS Directive

This declaration of conformity is issued under the sole responsibility of the manufacturer:

**Jack Sealey Ltd, Kempson Way, Suffolk Business Park, Bury St Edmunds, Suffolk. IP32 7AR**

Declaration of Conformity in accordance with the above Directive(s).

References to harmonised standard(s)

EN 61000-3-2:2014 .....

EN 61000-3-3:2013 .....

EN 60204-1:2006+A1:2009+AC:2010 .....

.....

.....

.....

Technical file compiled by: **Jack Sealey Ltd**

**Being the responsible person appointed by the manufacturer.**

Signed *Steve Buckle* .....

Date **4 July 2018** .....

Name **Steve Buckle.** .....

Position **Marketing Director.** .....

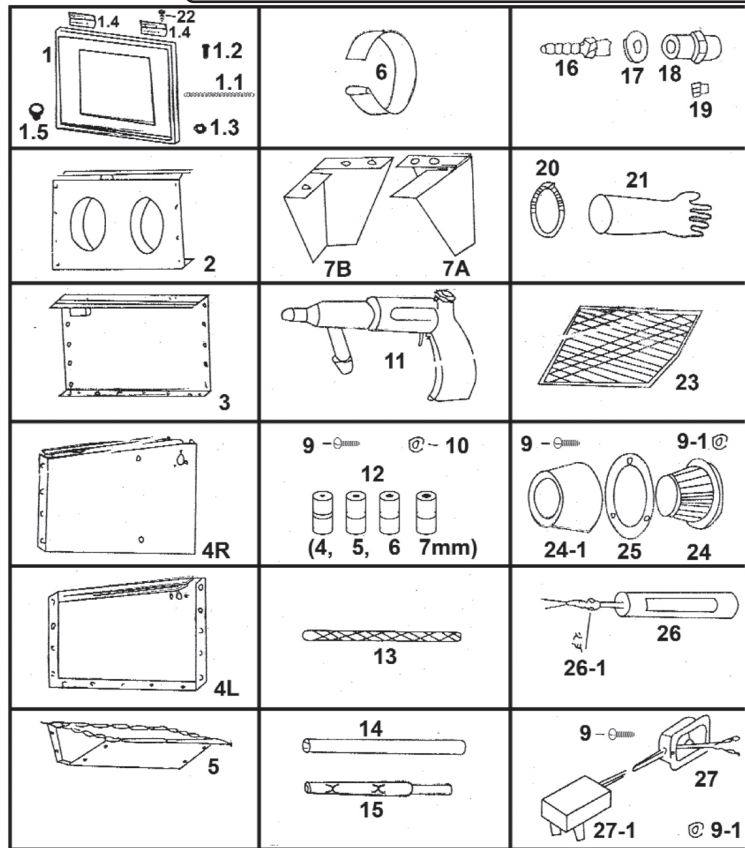
Place: **Bury St Edmunds**

**Sealey Group, Kempson Way, Suffolk Business Park, Bury St Edmunds, Suffolk. IP32 7AR**

**01284 757500**
**01284 703534**
**sales@sealey.co.uk**
**www.sealey.co.uk**



Parts Information:  
**Shot Blast Cabinet with Gun 640 x 490 x 490mm**  
**Model No: SB951.V5**



Item	Part No.	Description
1	SB951.V4-01	LID, TOP, TRANSPARENT
1.1	SB951.V4-1.1	CHAIN, TOP LID
1.2	SB951.V4-1.2	SCREW
1.3	SB951.V4-1.3	NUT
1.4	SB951.V4-1.4	HINGE
1.5	SB951.V4-1.5	KNOB
2	SB951.V4-02	FRONT PANEL
3	SB951.V4-03	REAR PANEL
4L	SB951.V4-04L	LEFT PANEL
4R	SB951.V4-04R	RIGHT PANEL
5	SB951.V5-05	BASE
6	SB951.V4-06	LAMP CLAMP
7A	SB951.V4-07A	FRONT LEG (LEFT)
7B	SB951.V4-07B	FRONT LEG (RIGHT)
--	MSP416.S	MACHINE SCREW PAN HEAD PHILLIPS M4x16mm
9	MSP612.S	MACHINE SCREW PAN HEAD PHILLIPS M6x12mm
9.1	SN4.S	STEEL NUT M4 ZINC DIN934 (SINGLE)
10	SB951.V4-10	NUT
11	SB974.V3-23	SANDING GUN
12	SB974.V3-23-1	SANDING GUN NOZZLE (PK OF 4)

Item	Part No.	Description
13	SB951.V4-13	AIR HOSE
14	SB951.V4-14	SUCTION HOSE, PLASTIC
15	SB951.V4-15	SUCTION HOSE, STEEL
16	SB972.V4-33	CONNECTOR
17	SB951.V4-17	WASHER
18	SB951.V4-18	AIR SUPPLY FITTING
19	SB951.V4-19	HOSE CLAMP 1/4"
20	SB951.V4-20	GLOVE CLAMP
21	SB951.V4-21	GLOVES
22	SB951.V4-22	SCREW
23	SB951.V4-23	SCREEN
24	SB970.V3-14	FILTER
24.1	SB951.V4-24.1	FILTER
25	SB972.V4-15	PRESSING RING
26	SB951.V4-26	WORKLIGHT
26.1	SB951.V4-26.1	CABLE GRIP
27	SB951.V4-27	SWITCH BOX
27.1	SB951.V4-27.1	MAINS TRANSFORMER
--	SB951.V4-28	PVC MAIN SCREEN
--	SB951.V4-29	PVC WINDOW FRAME
--	SB951.V4-30	PROTECTIVE SHEET

**NOTE:** It is our policy to continually improve products and as such we reserve the right to alter data, specifications and component parts without prior notice.

**IMPORTANT:** No liability is accepted for incorrect use of product.

**WARRANTY:** Guarantee is 12 months from purchase date, proof of which will be required for any claim.

**Sealey Group**, Kempson Way, Suffolk Business Park, Bury St Edmunds, Suffolk. IP32 7AR



01284 757500



01284 703534



sales@sealey.co.uk



www.sealey.co.uk