

Thank you for purchasing a Sealey Product. Manufactured to a high standard this product will, if used according to these instructions and properly maintained, give you years of trouble free performance.



IMPORTANT: PLEASE READ THESE INSTRUCTIONS CAREFULLY. NOTE THE SAFE OPERATIONAL REQUIREMENTS, WARNINGS AND CAUTIONS. USE THIS PRODUCT CORRECTLY AND WITH CARE FOR THE PURPOSE FOR WHICH IT IS INTENDED. FAILURE TO DO SO MAY CAUSE DAMAGE AND/OR PERSONAL INJURY AND WILL INVALIDATE THE WARRANTY. PLEASE KEEP INSTRUCTIONS SAFE FOR FUTURE USE.

1. SAFETY INSTRUCTIONS

1.1. ELECTRICAL SAFETY

WARNING! It is the responsibility of the owner and the operator to read, understand and comply with the following: You must check all electrical products, before use, to ensure that they are safe. You must inspect power cables, plugs, sockets and any other connectors for wear or damage. You must ensure that the risk of electric shock is minimised by the installation of appropriate safety devices. A Residual Current Circuit Breaker (RCCB) should be incorporated in the main distribution board. We also recommend that a Residual Current Device (RCD) is used. It is particularly important to use an RCD with portable products that are plugged into a supply which is not protected by an RCCB. If in any doubt consult a qualified electrician. You may obtain a Residual Current Device by contacting your Sealey dealer.


You must also read and understand the following instructions concerning electrical safety.

- 1.1.1. The **Electricity at Work Act 1989** requires that all portable electrical appliances, if used on business premises, are tested by a qualified electrician, using a Portable Appliance Tester (PAT), at least once a year.
- 1.1.2. The **Health & Safety at Work Act 1974** makes owners of electrical appliances responsible for the safe condition of those appliances and the safety of the appliance operators. **If in any doubt about electrical safety, contact a qualified electrician.**
- 1.1.3. Ensure that the insulation on all cables and on the appliance is safe before connecting it to the power supply. See 1.1.1. and 1.1.2. and use a Portable Appliance Tester.
- 1.1.4. Ensure that cables are always protected against short circuit and overload.
- 1.1.5. Regularly inspect power supply cables and plugs for wear or damage and check all connections to ensure that none is loose
- 1.1.6. **Important:** Ensure that the voltage marked on the appliance matches the power supply to be used and that the plug is fitted with the correct fuse - see fuse rating at right.
- 1.1.7. **DO NOT** pull or carry the appliance by the power cable.
- 1.1.8. **DO NOT** pull the plug from the socket by the cable.
- 1.1.9. **DO NOT** use worn or damaged cables, plugs or connectors. Immediately have any faulty item repaired or replaced by a qualified electrician. When a BS 1363/A UK 3 pin plug is damaged, cut the cable just above the plug and **dispose of the plug safely.**

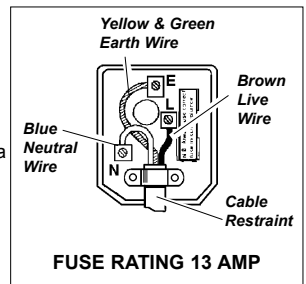
Fit a new plug according to the following instructions (UK only).

- a) **Connect the GREEN/YELLOW earth wire to the earth terminal 'E'.**
- b) **Connect the BROWN live wire to the live terminal 'L'.**
- c) **Connect the BLUE neutral wire to the neutral terminal 'N'.**

d) After wiring, check that there are no bare wires, that all wires have been correctly connected, that the cable outer insulation extends beyond the cable restraint and that the restraint is tight.

Double insulated products, which are always marked with this symbol , are fitted with live (brown) and neutral (blue) wires only. To rewire, connect the wires as indicated above - **DO NOT** connect either wire to the earth terminal.

- 1.1.10. Products which require more than 13 amps are supplied without a plug. In this case you must contact a qualified electrician to ensure that a suitably rated supply is available. We recommend that you discuss the installation of an industrial round pin plug and socket with your electrician.
- 1.1.11. If an extension reel is used it should be fully unwound before connection. A reel with an RCD fitted is preferred since any appliance plugged into it will be protected. The cable core section is important and should be at least 1.5mm², but to be absolutely sure that the capacity of the reel is suitable for this product and for others which may be used in the other output sockets, we recommend the use of 2.5mm² section cable.



1.2 GENERAL SAFETY

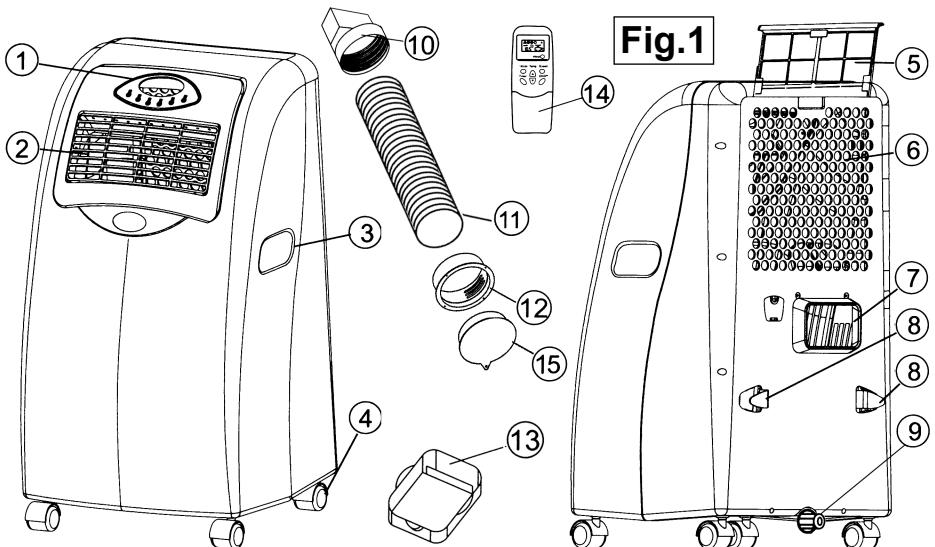
- ✓ Disconnect the unit from the mains power before servicing or cleaning.
- ✓ Maintain the unit in good order and clean condition for best and safest performance.
- ✓ Replace or repair damaged parts. *Use recommended parts and an authorised service agent. Unauthorised parts may be dangerous and will invalidate the warranty.*
- ✓ Locate the unit in a suitably sized room for its capacity, keep the immediate area in front of the outlet grille clean and tidy and free from unrelated materials.
- ✗ DO NOT use the unit near gas appliances, fires or in the vicinity of flammable liquids, solids or gases such as petrol, solvents, aerosols etc, or where heat sensitive materials may be stored.
- ✗ DO NOT block the air intake or outlet by placing the unit too close to walls or furniture.
- ✗ DO NOT cover the unit when in use, and do not obstruct the air inlet and outlet grilles with items such as clothing, soft furnishings, furniture, bedding etc.
- ✗ DO NOT use the heater for any purpose other than that for which it is designed.
- ✗ DO NOT allow the unit to get wet as this may cause an electric shock, and will damage the unit.
- ✗ DO NOT let the power lead touch a hot surface, lie in a hot airflow, or run under a carpet.
- ✗ DO NOT insert or allow objects to enter any openings of unit as this may cause an electric shock, fire or damage to unit.
- ✗ DO NOT use in bathroom, shower room, or in any environment of excessive condensation.
- ✗ DO NOT use the unit out of doors. This unit is designed for indoor use only.
- ✗ DO NOT use the unit if incorrectly working, or has become wet or has sustained any other type of damage.
- ✗ DO NOT allow children to operate the unit.
- ✓ When not in use, disconnect from the mains and store in a safe, cool, dry, childproof area.
- ✓ Keep the unit one metre away from TV sets or radios to avoid electromagnetic interference.
- ✓ Keep the unit level when moving it from one place to another.
- ✗ DO NOT subject the unit to vibration, shocks or impact.
- ✗ DO NOT use the unit in a very crowded room.

2. SPECIFICATION

Model No: **SAC9000**
Cooling Capacity: 9000Btu/hr
Heater: 1600W
Maximum Air Flow: 360mtr³/hr
Maximum Water Extraction Rate: 1.8ltr/hr

Thermostat Range: 16-35°C
Refrigerant: R407C
Condensate Tank: 2ltr (with alarm)
Exhaust Hose Length: 1.8mtr
Energy Class: C

3. CONTENTS/MAIN FEATURES



CONTENTS / MAIN FEATURES (See fig.1)

- | | | | |
|-------------|--------------------|--------------|----------------------------|
| 1 | Control Panel | 9 | Water Stopper |
| 2 | Air Outlet | 10 | Inner Exhaust Duct Adaptor |
| 3 | Handle | 11 | Exhaust Duct |
| 4 | Castor | 12 | Outer Exhaust Duct Adaptor |
| 5 | Air Filter | 13 | Water Collection Tray |
| 6 | Air Inlet | 14 | Remote Control |
| 7 | Exhaust Air Outlet | 15 | Outer Exhaust Duct Cap |
| 8 | Cable Stowage | | |

4. INSTALLATION

4.1 Assembling the exhaust duct. See fig.2. First extend each end of the duct (11) and attach the inner adaptor (10) and the outer adaptor (12) using a clockwise threading action. Push the inner adaptor into the exhaust air outlet on the back of the unit. See fig.1-7. The exhaust can be extended from 0.55m to 1.55m. The unit is at its most efficient when the air duct is shorter. Use only the duct supplied. Do not further extend the length of the duct with other ducting as this will reduce the efficiency of the unit.

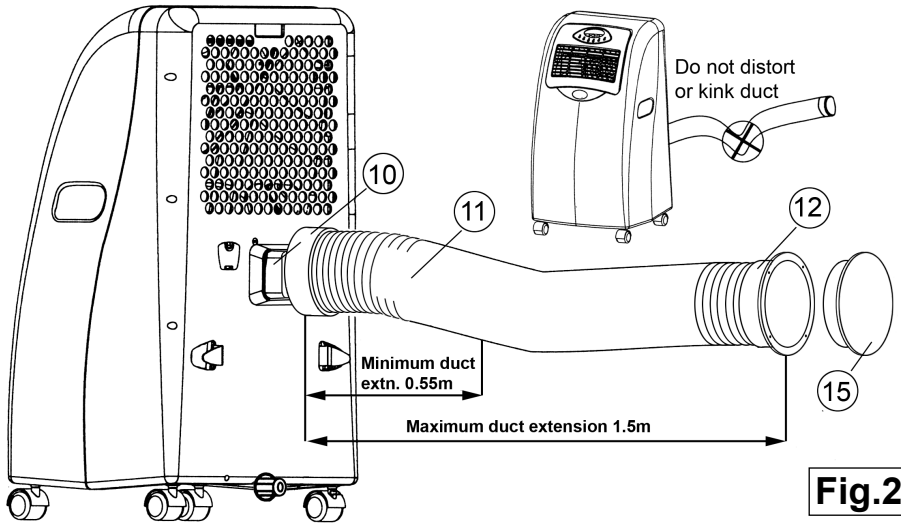


Fig.2

4.2 Exhaust duct placement. See fig.3. Site the unit close to a door or window that can be left ajar, as indicated below. Place the end of the duct in the opening and if necessary tie it in place. Do not allow the duct to be overstretched. Do not allow the duct to be kinked or distorted or blocked as this will overheat the unit. If the unit becomes overheated it will automatically shut down.

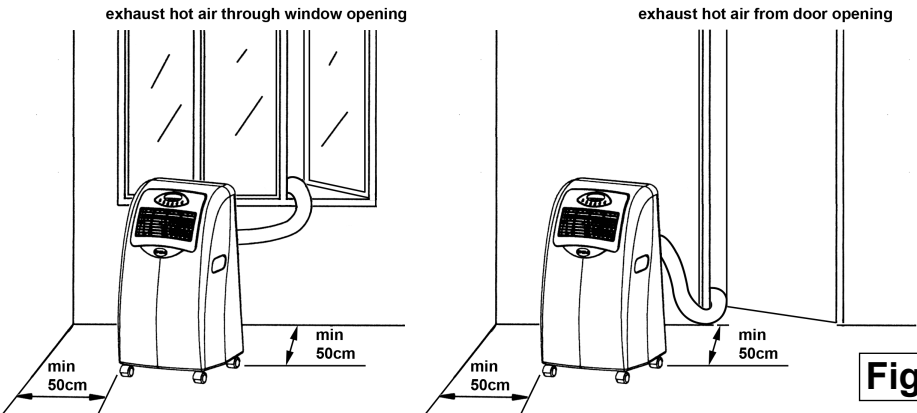
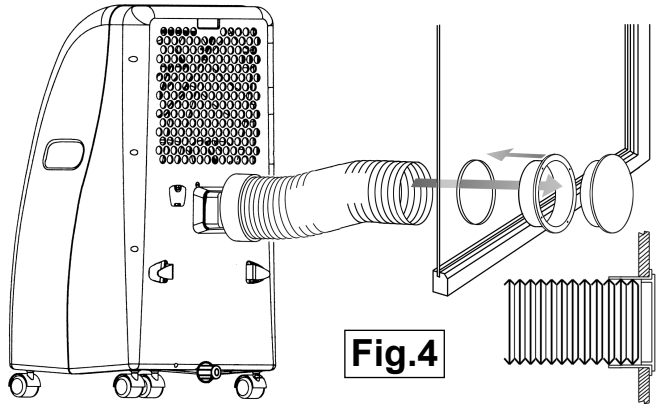


Fig.3

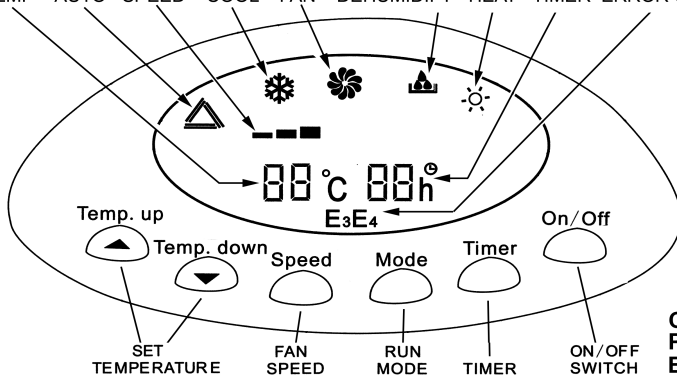
4.3 Window installation. The duct can also be more permanently installed through a window or similar thin panel using components 12 and 15. Some windows with double glazing or specialist glass will not be suitable. Seek professional help from a Glazier as to whether the window is suitable and to cut the hole. Item 15 is a cap to seal the hole when the unit is not in use. Remember to remove the cap before the unit is used again.



5. OPERATION

CONTROL PANEL DISPLAY SYMBOLS

TEMP AUTO SPEED COOL FAN DEHUMIDIFY HEAT TIMER ERROR CODE



CONTROL PANEL BUTTONS

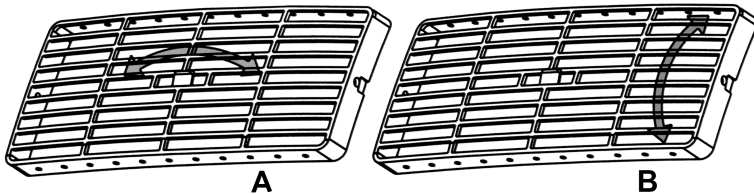
- 5.1 **Operation.** Once the unit has been correctly positioned and installed connect it to the power socket.
- 5.1.1 **On/Off Button.** To turn the unit on press the ON/OFF button once. The unit will start up in 'AUTO' mode and the LCD window will display the triangular auto symbol. (See above).
- 5.1.2 To turn the unit off press the ON/OFF button once. Any timer settings made whilst the unit was on will be cancelled.
- 5.1.3 In the off condition the following settings will be retained: mode, temperature and fan speed. When the unit is turned on again it will run with the previous settings.

5.2 Mode Descriptions.

AUTO.		The internal microprocessor will switch the compressor and fan on or off to automatically maintain the temperature set on the control panel.
COOL.		When the room temperature is higher than the temperature set on the control panel the compressor will start to provide a cooling action. When the room temperature is lower than the set temperature the compressor stops and only the fan runs.
FAN.		Only the upper fan operates to circulate the air. The fan speed can be set but temperature is not controlled. The compressor and associated fan do not operate.
DEHUMIDIFY.		The compressor and lower fan are running with the upper fan running at low speed. The unit will draw moisture from the air in the room.
HEAT.		When the room temperature is lower than the set temperature the heater starts to operate. The unit has a 1600W heat output. When the room temperature is higher than the temperature set on the control panel the heater switches off but the fan continues to run.

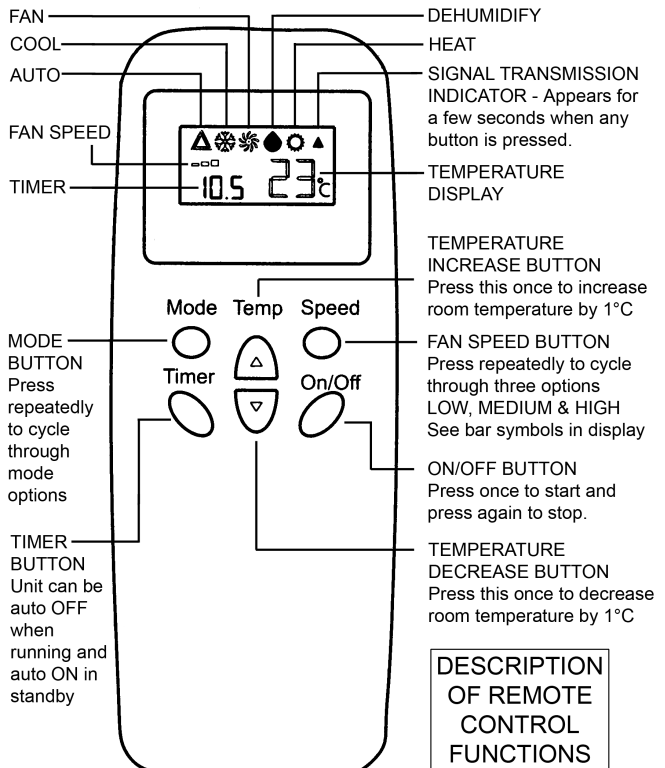
- 5.2.1 **Mode Button.** Press the mode button repeatedly to cycle through to the mode of your choice. The appropriate symbol will appear on the display. (See above).

- 5.3 **Speed Button.** The fan has 3 speeds: LOW, MEDIUM & HIGH. Press the button repeatedly to cycle through the three options. Low speed is represented on the display as a single small bar. Medium speed adds a second larger bar. High speed adds a third larger bar.
- 5.4 **Temp. up & Temp. down Buttons.** The display generally shows the ambient temperature of the room. To adjust the temp. press the up or down buttons as required. The display will show the new temp. which will flash a few times then return to show the actual room temp. again. The display will change as the room temp. changes. The adjustment range is 16°C to 35°C. When the unit is in auto mode the default temperature is 25°C.
- 5.5 **Timer Button.** (AUTO OFF) When the unit is running the timer can be set to turn the unit OFF after a period of time of 0.5 to 12 hours and can be set in increments of 0.5 hour by repeatedly pressing the button until the desired period of time appears on the display.
- 5.5.1 (AUTO ON) When the unit is in standby the timer can be set to turn the unit ON after a period of time of 0.5 to 12 hours and can be set in increments of 0.5 hour by repeatedly pressing the button until the desired period of time appears on the display.
- 5.6 **Airflow Direction Adjustment.** The direction of the air output can be changed manually by tilting the louvre assembly at the front of the unit. To move the airflow up and down tilt the whole louvre assembly as show in 'B' below. To move the air flow from side to side use the tilt control to be found in the centre of the louvre as shown in 'A' below.

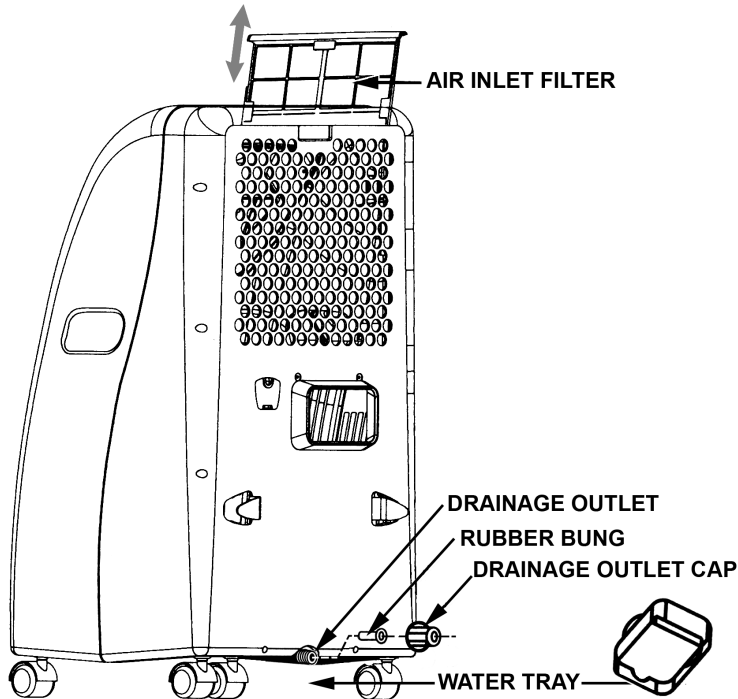


- 5.7 **Remote Control Operation.** The remote control provides the same functionality as the main control panel and uses the same symbols in its display.

- 5.7.1 Insert the two AAA batteries supplied into the compartment in the back of the remote control ensuring that they are the right way round.
- 5.7.2 In use, point the remote control at the main control panel on the unit. Whenever a button is pressed a signal transmission indicator appears briefly in the top right hand corner of the display.
- 5.7.4 Ensure that the main unit is plugged into the mains socket.
- 5.7.5 Turn the unit on by pressing the ON/OFF button once.
- 5.7.6 Select the mode of operation by repeatedly pressing the mode button until the required symbol appears.
- 5.7.7 Make any adjustments required to the temperature or fan speed.
- 5.7.8 The timer functions in the same way as described in section 5.5. To set auto on, the main unit must be plugged in to the mains socket. To cancel timer settings advance the time to 12 hours and press the timer button once more to set the display to zero.



6. MAINTENANCE



- 6.1 General Maintenance.** Turn the unit OFF and disconnect it from the mains power supply before cleaning or performing any maintenance.
- 6.1.2 Inspect the unit on a regular basis and replace or repair any damaged parts. *Use recommended parts and an authorised service agent. Unauthorised parts may be dangerous and will invalidate the warranty.*
- 6.1.3 Do not use any solvents or abrasive material to clean the plastic exterior of the unit. Use only a damp soft cloth for cleaning and dry the unit afterwards with a clean, dry, soft cloth.
- 6.2 Air Filter.** If the air filter becomes blocked with dust this will effect the efficiency of the unit. The air filter should be checked after every two or three uses. Remove the air filter (see above) from behind the back air inlet vent and clean it as follows. Remove any excess of dust using a small soft brush such as a clean paint brush. Prepare a container of warm water (40°C) containing a neutral detergent and immerse the filter in it. Gently agitate the filter in the water then rinse it in clean water. Shake off any excess water and leave it in a safe place to air dry. Reinsert the filter into the unit. Do not run the unit without the filter.
- 6.3 Drainage.** When the unit is cooling/dehumidifying, condensed water will drain into the internal water tank which has a capacity of two litres. When the tank is full a buzzer will sound 20 times and an error code 'E4' will appear at the bottom of the main display. The cooling system will switch off automatically and the fan will cut out after 3 minutes. The system cannot be restarted until the tank has been drained.
- 6.3.1 Turn off the unit and unplug it from the mains supply.
- 6.3.2 Place the drainage tray under the drainage outlet.
- 6.3.3 Unscrew the drainage cap and prepare to remove the bung.
- NOTE: The inner tank may contain more water than the capacity of the drain tray. Be prepared to replace the bung before the tray is full.**
- 6.3.4 Remove the rubber bung and allow the water to drain. Replace bung before tray is full.
- 6.3.5 Repeat the above steps until all the water has been drained.
- 6.3.6 Replace the rubber bung.
- 6.3.7 Screw the drainage cap back onto the drainage outlet and tighten it to fully push the bung home.
- 6.4 Continuous Drainage.** To provide continuous drainage for the unit remove the drainage cap and rubber bung and push the black plastic hose supplied onto the drainage outlet. For effective drainage keep the open end of the hose at a lower level than the drainage outlet. The hose can be extended if required with 18mm plastic pipe.
- 6.5 If the unit is to be unused for sometime be sure to drain all condensed water from the tank.

7. TROUBLESHOOTING

PROBLEM	POSSIBLE CAUSES	SOLUTIONS
Unit does not work.	Power supply fault: 1. Not plugged in. 2. Damaged plug or socket. 3. Internal fuse blown.	1. Plug unit into mains socket. 2. Replace plug as directed in Section 1.1.9. 3. Return unit to dealer to find cause and replace fuse.
Unit cuts out.	1. Timer is set or room temperature is lower than the temperature set on the unit.	1. Set timer to 0.00 or wait for unit to start automatically when room temperature has risen.
In cooling mode no cool air is coming out of unit.	1. Room temperature is lower than the set temperature. 2. There is frost on the evaporator.	1. Set temp. lower or wait for unit to start automatically when room temperature has risen. 2. The unit is defrosting and will run again automatically when the process is finished.
No cool air coming out in dehumidifying mode.	1. Remove filter. If you can see frost on the on the surface of the evaporator then the unit is defrosting.	1. The unit will run again automatically when the defrosting process is finished.
No hot air coming out in heating mode.	1. Room temperature is higher than the set temperature.	1. Set temp. higher or wait for unit to start automatically when room temperature has fallen.
Error code 'E2' appears at bottom of display panel on unit.	1. Failure of room temperature sensor.	1. Return unit to dealer for temp. sensor replacement.
Error code 'E3' appears at bottom of display panel on unit.	2. Evaporator low temperature protector is damaged	2. Return unit to dealer for temp. protector replacement.
Error code 'E4' appears at bottom of display panel on unit.	3. Water storage tank is full.	3. Drain water tank and/or set up continuous drainage.

Declaration of Conformity We, the sole importer into the UK, declare that the product listed here is in conformity with the following standards and directives. The construction file for this product is held by the Manufacturer and may be inspected, by a national authority, upon request to Jack Sealey Ltd.

Air Conditioner, Humidifier, Heater Unit.

Model No: SAC9000

72/23/EEC Low Voltage Directive
89/336/EEC EMC Directive
93/68/EEC Marking Directive
2002/95/EC RoHS Directive
2002/96/EC WEEE Directive



Signed by Steve Buckle

24th November 2006

For Jack Sealey Ltd. Sole importer into the UK of Sealey Power Products.

NOTE: It is our policy to continually improve products and as such we reserve the right to alter data, specifications and component parts without prior notice. **IMPORTANT:** No liability is accepted for incorrect use of this product.

WARRANTY: Guarantee is 12 months from purchase date, proof of which will be required for any claim. **INFORMATION:** For a copy of our catalogue and latest promotions call us on 01284 757525 and leave your full name, address and postcode.



POWER PRODUCTS

Sole UK Distributor
Sealey Group,
Bury St. Edmunds, Suffolk.



01284 757500

Web address: www.sealey.co.uk



01284 703534

E-mail: sales@sealey.co.uk