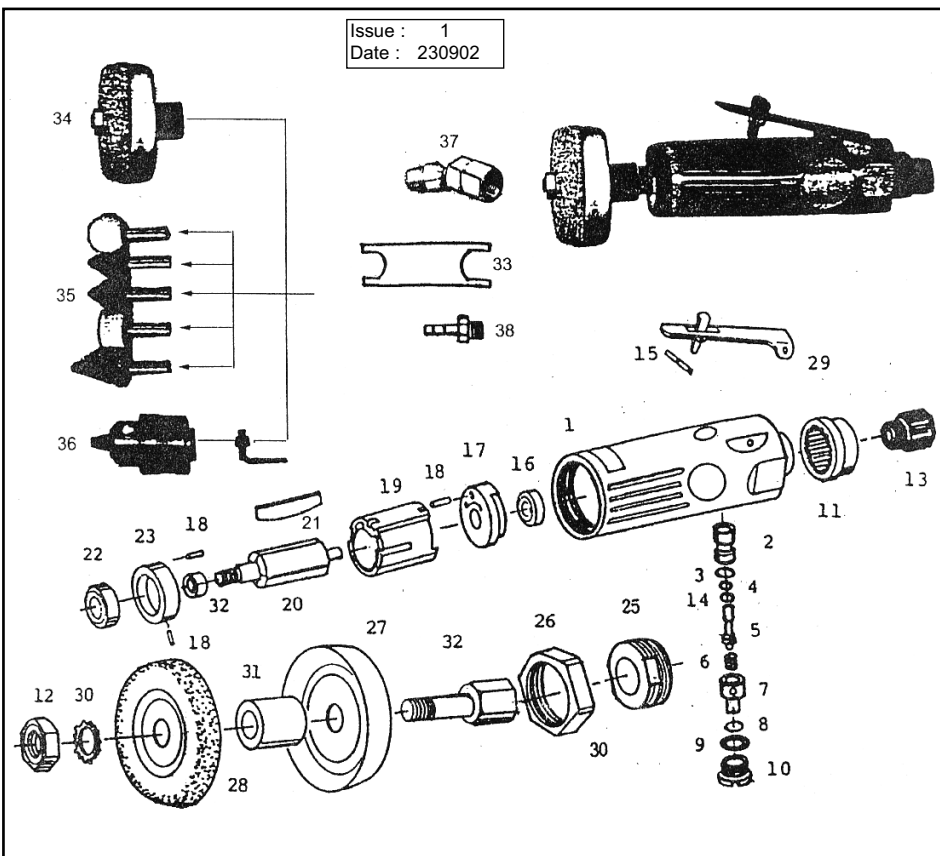


Issue : 1
Date : 230902



ITEM	PART NO	DESCRIPTION	ITEM	PART NO	DESCRIPTION	ITEM	PART NO	DESCRIPTION
1	SA92-01	Motor housing	14	SA92-14	O-Ring	27	SA92-27	2 1/2" Wheel
2	SA92-02	Valve bushing	15	SA92-15	Lever pin	28	SA92-28	Tyre buffing wheel
3	SA92-03	O-Ring	16	SA92-16	Bearing	29	SA92-29	Safety lever
4	SA92-04	O-Ring	17	SA92-17	Rear plate	30	SA92-30	Spring washer
5	SA92-05	Valve stem	18	SA92-18	Pin	31	SA92-31	Spacer
6	SA92-06	Spring	19	SA92-19	Cylinder	32	SA92-32	Arbor
7	SA92-07	Air regulator	20	SA92-20	Rotor	33	SA92-33	Wrench
8	SA92-08	O-Ring	21	SA92-21	Rotor blade	34	SA92-34	Wheel assembly
9	SA92-09	O-Ring	22	SA92-22	Bearing	(includes item nos 12, 27, 28, 30, 31 & 32)		
10	SA92-10	Valve screw	23	SA92-23	Front plate	35	SA92-35	Grinding stone set
11	SA92-11	Exhaust sleeve	24	SA92-24	Pin	36	SA92-36	3/8" Drill chuck
12	SA92-12	Nut	25	SA92-25	Retainer	37	SA92-37	Universal joint
13	SA92-13	Adaptor	26	SA92-26	Nut	38	SA92-38	Nipple

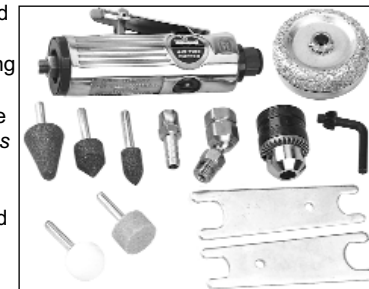
NOTE: It is our policy to continually improve products and as such we reserve the right to alter data, specifications and component parts without prior notice. **IMPORTANT:** No liability is accepted for incorrect use of this equipment. **WARRANTY:** Guarantee is 12 months from purchase date, proof of which will be required for any claim. **INFORMATION:** Call us for a copy of our latest catalogue and promotions on 01284 757525 and leave your full name and address including your postcode.

Thank you for purchasing a Sealey Product. Manufactured to a high standard this product will, if used according to these instructions and properly maintained, give you years of trouble free performance.



IMPORTANT: PLEASE READ THESE INSTRUCTIONS CAREFULLY. NOTE THE SAFE OPERATIONAL REQUIREMENTS, WARNINGS AND CAUTIONS. USE THIS PRODUCT CORRECTLY AND WITH CARE FOR THE PURPOSE FOR WHICH IT IS INTENDED. FAILURE TO DO SO MAY CAUSE DAMAGE AND/OR PERSONAL INJURY AND WILL INVALIDATE THE WARRANTY. PLEASE KEEP INSTRUCTIONS SAFE FOR FUTURE USE.

- ✓ Follow all workshop safety rules, regulations, and conditions when using the buffing kit.
- ❑ **WARNING!** Disconnect from air supply before changing accessories or servicing.
- ✓ Maintain the buffing kit in good condition and replace any damaged or worn parts. *Use genuine parts only. Unauthorised parts may be dangerous and will invalidate the warranty.*
- ❑ **WARNING!** Check correct air pressure is maintained and not exceeded. We recommend 90psi.
- ✓ Keep air hose away from heat, oil and sharp edges. Check air hose for wear before each use and ensure that all connections are secure.
- ✓ Wear approved safety eye/face shield, ear defenders, and hand protection.
- ❑ **WARNING!** Due to the possible presence of asbestos dust from brake linings, when working around vehicle brake systems we recommend you wear suitable respiratory protection.
- ✓ Maintain correct balance and footing. Ensure the floor is not slippery and wear non-slip shoes.
- ✓ Keep children and non essential persons away from the working area.
- ✗ DO NOT use the buffing kit for a task it is not designed to perform.
- ❑ **WARNING! DO NOT** use buffing kit if damaged or thought to be faulty. (Contact Service Agent).
- ✗ DO NOT use buffing kit unless you have been instructed in its use by a qualified person.
- ✗ DO NOT carry the buffing kit by the air hose, or yank the hose from the air supply.
- ✗ DO NOT operate buffing kit if you are tired or under the influence of alcohol, drugs or intoxicating medication.
- ✗ DO NOT carry buffing kit with your hand on the power trigger in order to avoid unintentional starting.
- ✗ DO NOT direct air from the air hose at yourself or others.
- ✓ When not in use disconnect from air supply and store in a safe, dry, childproof location.



2. INTRODUCTION & SPECIFICATIONS

Composite cased air motor with selection of 6mm shanked grinding points, 8mm drill chuck and tyre buffing cone. Kit also includes spanners, chuck key and air hose adaptors.

Collet size6mm
Operating pressure90psi
Weight0.4kg

Air inlet size 1/4" BSP
Air consumption 5cfm
Free speed 22000rpm

3. PREPARING BUFFING KIT FOR USE

3.1. Air Supply

- 3.1.1. Ensure buffer air valve (or trigger) is in the "off" position before connecting to the air supply.
- 3.1.2. You will require an air pressure of 90psi, and an air flow according to specification.
- 3.1.3. **WARNING!** Ensure the air supply is clean and does not exceed 90 psi while operating the buffer. Too high an air pressure and unclean air will shorten the product life due to excessive wear, and may be dangerous causing damage and/or personal injury.
- 3.1.4. Drain the air tank daily. Water in the air line will damage the buffing kit.
- 3.1.5. Clean air inlet filter weekly. Recommended hook-up procedure is shown in fig 1.
- 3.1.6. Line pressure should be increased to compensate for unusually long air hoses (over 8 metres). The minimum hose diameter should be 1/4" I.D. and fittings must have the same inside dimensions.
- 3.1.7. Keep hose away from heat, oil and sharp edges. Check hose for wear, and make certain that all connections are secure.

3.2. Couplings.

Vibration may cause failure if a quick change coupling is connected directly to the buffing kit. To overcome this, connect a leader hose to the buffing kit. A quick change coupling may then be used to connect the leader hose to the air line recoil hose. See fig 1 & 2.

fig 1

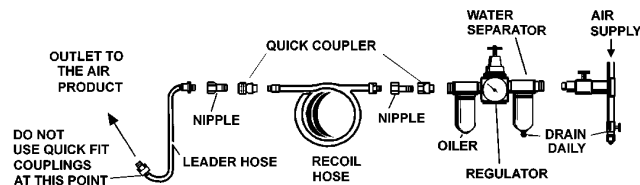
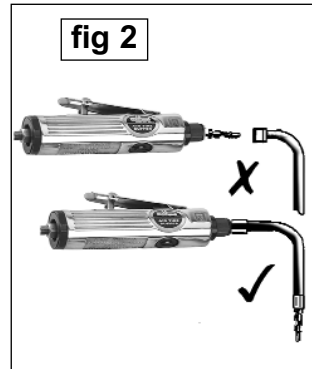


fig 2



4. OPERATING INSTRUCTIONS

- WARNING!** Ensure you read, understand and apply safety instructions before use.

Note: Numbers shown in brackets refer to item numbers in the parts list.

- WARNING!** Disconnect from air supply before changing accessories or servicing.

- 4.1. The buffing wheel (34) attaches directly to the arbor (32) and should be tightened using the wrench (33).
- 4.2. To use the grinding stones (35) screw the 3/8" drill chuck (36) onto the arbor (32). Insert the required grinding stone into the chuck and secure using the chuck key provided. Remember to remove the chuck key.
- 4.3. Depress the trigger to operate the buffing kit.

5. MAINTENANCE

- WARNING!** Disconnect buffer from air supply before changing accessories, servicing or performing maintenance. Replace or repair damaged parts. *Use genuine parts only. Unauthorised parts may be dangerous and will invalidate the warranty.*
- 5.1. Lubricate the buffer daily with a few drops of Sealey air tool oil dripped into the air inlet to prolong its life.
- 5.2. Clean the buffing kit after use. DO NOT use damaged stone wheels.
- 5.3. Loss of power or erratic action may be due to the following:
 - a) Excessive drain on the air line. Moisture or restriction in the air pipe. Incorrect size or type of hose connectors. To remedy check the air supply and follow instructions in chapter 3.
 - b) Grit or gum deposits in the buffing kit may also reduce performance. If your model has an air strainer (located in the area of the air inlet), remove the strainer and clean it. Flush the buffer out with gum solvent oil or an equal mixture of SAE No 10 oil and paraffin. Allow to dry before use.
- 5.4. For a full service contact your local Sealey service agent.
- 5.5. When not in use, disconnect from air supply, clean buffer and store in a safe, dry, childproof location.

Declaration of Conformity



We, the sole importer into the UK, declare that the products listed here are in conformity with the following EEC standards and directives. The construction files for these products are held by the Manufacturer and may be inspected, by a national authority, upon request to Jack Sealey Ltd.

Air Tyre Buffing Set

Model: SA92

98/37/EC Machinery Directive
93/68/EEC Marking Directive

Signed by Mark Sweetman

23rd September 2002

For Jack Sealey Ltd. Sole importer into the UK
of Sealey Power Tools.