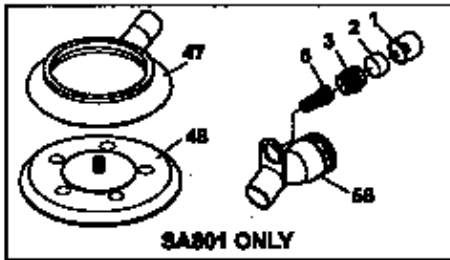




PARTS LIST  
AIR OPERATED SANDERS  
Models SA800 & SA801



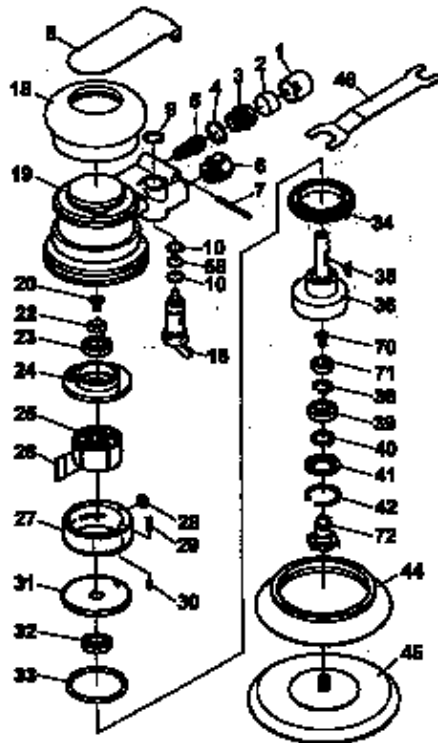
Issue No: 1  
Date Issued: 070302

Item Part No. Description

1	SA800.01	Cover
2	SA800.02	Felt
3	SA800.03	Muffler Body
4	SA800.04	O-ring - SA800 only
5	SA800.05	Cone Muffler
6	SA800.06	Inlet Bushing
7	SA800.07	Spring Pin
8	SA800.08	Lever
9	SA800.09	Snap Ring
10	SA800.10	O-ring
16	SA800.16	Regulator Asm.
18	SA800.18	Rubber Cover
19	SA800.19	Housing
20	SA800.20	Flat Screw
22	SA800.22	Washer
23	SA800.23	Bearing
24	SA800.24	Rear Plate
25	SA800.25	Rotor, 6" Pad
26	SA800.26	Rotor Blade
27	SA800.27	Cylinder
28	SA800.28	O-ring
29	SA800.29	Spring Pin
30	SA800.30	Spring Pin
31	SA800.31	Front Plate
32	SA800.32	Bearing
33	SA800.33	O-ring
34	SA800.34	Guard Bushing
35	SA800.35	Rotor Key
36	SA800.36	Shaft Balancer, 6" Pad
38	SA800.38	Snap Ring
39	SA800.39	Bearing
40	SA800.40	Felt Ring

Item Part No.	Description
41 SA800.41	Bearing Shield
42 SA800.42	Snap Ring
44 SA800.44	Shroud - SA800
45 PTC/150VA	6" Velcro Pad - SA800
46 SA800.46	Spanner
47 SA800.47	Shroud - SA801
48 AK290	6" Velcro Pad - SA801
56 SA801.56	Vacuum Adaptor
58 SA800.58	O-ring

Item Part No.	Description
70 SA800.70	Screw
71 SA800.71	Bearing
72 SA800.72	Shaft
<b>Optional Sanding Pads</b>	
- PTC/150A	Stick-on - SA800
- PTC/150SA	Stick-on - SA800
- AK289	Stick-on - SA801



**NOTE:** It is our policy to continually improve products and as such we reserve the right to alter data, specifications and component parts without prior notice.

**IMPORTANT:** No liability is accepted for incorrect use of this equipment.

**WARRANTY:** Guarantee is 12 months from purchase date, proof of which will be required for any claim.

**INFORMATION:** For a copy of our latest catalogue and promotions call us on 01284 757525 and leave your full name and address, including postcode.



Sole UK Distributor, Sealey Group,  
Bury St. Edmunds, Suffolk.



INSTRUCTIONS FOR  
AIR OPERATED SANDERS

Models: SA800 & SA801

Thank you for purchasing a Sealey product. Manufactured to a high standard this product will, if used according to these instructions and properly maintained, give you years of trouble free performance.



**IMPORTANT:** PLEASE READ THESE INSTRUCTIONS CAREFULLY. NOTE THE SAFE OPERATIONAL REQUIREMENTS, WARNINGS AND CAUTIONS. USE THIS PRODUCT CORRECTLY AND WITH CARE FOR THE PURPOSE FOR WHICH IT IS INTENDED. FAILURE TO DO SO MAY CAUSE DAMAGE AND/OR PERSONAL INJURY AND WILL INVALIDATE THE WARRANTY. PLEASE KEEP THESE INSTRUCTIONS SAFE FOR FUTURE USE.

1. SAFETY INSTRUCTIONS

- WARNING!** Ensure Health & Safety, local authority, and general workshop practice regulations are adhered to when using this equipment.
- WARNING!** Disconnect from air supply (and dust-free system if connected) before changing accessories, servicing or carrying out maintenance.
- ✓ Maintain the sander in good condition (use an authorised service agent).
- ✓ Replace or repair damaged parts. Use recommended parts only. Unauthorised parts may be dangerous and will invalidate the warranty.
- ✓ Use the sander in a suitable work area and keep area clean, tidy and free from unrelated materials. Ensure that there is adequate lighting.
- ✓ Before each use check abrasive disc for condition. If worn or damaged replace immediately.
- WARNING!** Always wear approved eye or face protection when operating the sander.
- ✓ If dust is generated, use face, dust or respiratory protection in accordance with COSHH regulations.
- ✓ Depending on the task, sander noise level may exceed 85dB, in which case wear safety ear defenders.
- ✓ Remove ill fitting clothing. Remove ties, watches, rings and other loose jewellery and contain and/or tie back long hair.
- ✓ Maintain correct balance and footing. Ensure the floor is not slippery and wear non-slip shoes.
- ✓ Keep children and unauthorised persons away from the working area.
- ✓ Ensure the workpiece is correctly secured before operating the sander. Never hold workpiece by hand.
- ✓ Check the workpiece to ensure there are no protruding nails, screws, stones, etc.
- ✓ Avoid unintentional starting.
- WARNING!** Ensure that the correct air pressure is maintained and not exceeded.
- ✓ Keep air hose away from heat, oil and sharp edges. Check air hose for wear before each use and ensure that all connections are secure.
- ✓ Prolonged exposure to vibration from these tools poses a health risk. It is the owner's responsibility to correctly assess the potential hazard, issue guidelines for safe periods of use and offer suitable protective equipment.
- x DO NOT use the sander for a task it is not designed to perform.
- x DO NOT operate sander if any parts are damaged or missing as this may cause failure and/or personal injury.
- WARNING!** DO NOT cut, grind, saw or sand any materials containing asbestos.
- x DO NOT carry the sander by the hose, or yank the hose from the air supply.
- x DO NOT get the sander wet or use in damp or wet locations.
- x DO NOT use the sander with water. These models are dry sanders only.
- x DO NOT operate sander when you are tired or under the influence of alcohol, drugs or intoxicating medication.
- x DO NOT leave the sander operating unattended.
- x DO NOT carry the sander with your finger on the power lever.
- x DO NOT direct air from the air hose at yourself or others.
- ✓ When not in use disconnect from air supply (and dust-free system if connected) and store in a safe, dry, childproof location.



Sole UK Distributor, Sealey Group,  
Bury St. Edmunds, Suffolk.

01284 757500 01284 703534 E-mail: sales@sealey.co.uk

01284 757500 01284 703534 E-mail: sales@sealey.co.uk

## ⚠ LEAD PAINT WARNING!

Paint once contained lead as a traditional ingredient. Contact with the toxic dust from the removal of such paint must therefore be avoided. The following action must be taken before using the sander on a surface that you suspect may contain lead paint.

1. User must determine potential hazard relating to age of paint to be removed (modern paints do not have lead content).
2. **DANGER!** Keep all persons and pets away from the work area. The following are particularly vulnerable to the effects of lead paint dust: *Pregnant women, babies and children.*
3. We recommend personal protection by using the following safety items:
  - a) Paint Spray Respirator (Our ref SSP16EN)
  - b) PE Coated Hooded Coverall (Our ref SSP266).
  - c) Latex Gloves (Our ref SSP24).
4. Take adequate measures to contain the paint dust, flakes and scrapings.
5. Continue to wear safety equipment (3) and thoroughly clean all areas when task is complete.
6. **Seal** paint waste in bags or containers for disposal according to local regulations.

## 2. TECHNICAL SPECIFICATIONS

The MA sanders are suitable for use on car bodies, woodwork and general flat surfaces. The sanders are intended for dry sanding only. DO NOT use with water.

Model:	SA800	SA801	Model:	SA800	SA801
Capacity Ø (mm)	150	150	Vac. Connector Bore/OD (mm)	NA	.28/32
Thread (UNF)	.5/16"	.5/16"	Complete with Velcro Pad	Yes	Yes
Free Speed (rpm)	10000	10000	Sound (dBA)	.80	.80
Operating Pressure (psi)	.90	.90	Vibration (m/s <sup>2</sup> )	1.9	1.9
Air Consumption (cfm)	.16	.16			
Air Inlet (BSP)	1/4"	1/4"			

## 3. PREPARING SANDER FOR USE

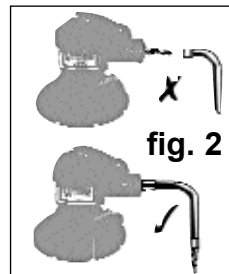
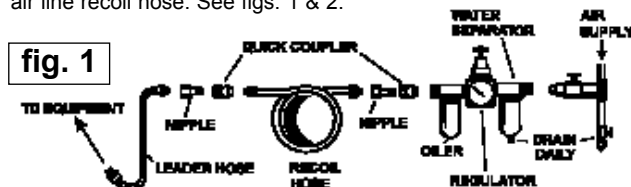
### 3.1. Air Supply

Recommended hook-up is shown in fig. 1.

- 3.1.1. Ensure the air valve (or throttle) is in the "off" position before connecting to the air supply.
- 3.1.2. You will require an air pressure and an air flow (cfm) according to the specification listed above.
- 3.1.3.  **WARNING!** Ensure the air supply is clean and does not exceed the pressure quoted while operating the sander. Too high an air pressure and/or unclean air will shorten the sander life due to excessive wear and may be dangerous causing damage and/or personal injury.
- 3.1.4. Drain the compressor air tank daily. Water in the air line will damage the sander.
- 3.1.5. Clean air inlet filter weekly.
- 3.1.6. Line pressure should be increased to compensate for unusually long air hoses (over 8 metres). The minimum hose diameter should be 1/4" I.D. and fittings must have the same bore.
- 3.1.7. Keep hoses away from heat, oil and sharp edges. Check hoses for wear and make certain that all connections are secure.

### 3.2. Couplings

Vibration may cause failure if a quick fit coupling is connected directly to the air tool. To overcome this, connect a leader hose to the tool. A quick fit coupling may then be used to connect the leader hose to the air line recoil hose. See figs. 1 & 2.



## 3.3. Dust Collection

### 3.3.1. SA801 only

The dust outlet tube of the sander must be connected to a dust-free system in accordance with COSHH and any other regulations that may apply to the work area. For information on dust-free systems, contact your local Sealey dealer.

## 4. OPERATING INSTRUCTIONS

- 4.1. Attach the appropriate sanding disc to the sanding pad.
- 4.2. Connect the sander to the air supply and the dust free system (SA801). Press the control valve (On/Off) lever and check that the unit is working correctly.

**Note:** The sander is designed for dry use only. DO NOT use with water or any other liquids.

## 5. MAINTENANCE

- WARNING!** Disconnect sander from the air supply before changing accessories, servicing or performing maintenance. Replace or repair damaged parts. *Use recommended parts only. Unauthorised parts may be dangerous and will invalidate the warranty.*
- 5.1. If the air supply does not have an oiler then every 3-4 hours of operation place a few drops of air tool oil (Sealey No. ATO/500 or ATO/1000) into the air inlet to prolong tool life.
  - 5.2. Clean the sander after use and change pads when required.
  - 5.3. Loss of power or erratic action may be due to the following:
    - a) Excessive drain on the air line. Moisture or restriction in the air pipe. Incorrect size or type of hose connectors. To remedy, check the air supply and follow the instructions in Section 3.
    - b) Grit or gum deposits in the tool may also reduce performance. If your model has an air strainer (located in the area of the air inlet), remove the strainer and clean it. Flush the tool out with gum solvent oil or an equal mixture of SAE 10 oil and kerosene. Allow to dry before use.
    - c) If you continue to experience problems, contact your local Sealey service agent.

## 6. DECLARATION OF CONFORMITY

### Declaration of Conformity

**CE** We, the sole importer into the UK, declare that the products listed here are in conformity with the following standards and directives. The construction files for these products are held by the manufacturer and may be inspected, by a national authority, upon request to Jack Sealey Ltd.

#### Air Operated Sanders

Models:  
SA800 & SA801

98/37/EC Machinery Directive  
93/68/EEC Marking Directive

Signed by Mark Sweetman

11th March 2002

For Jack Sealey Ltd. Sole importer into the UK of Sealey Power Tools.

☎ 01284 757500

📠 01284 703534

✉ E-mail: sales@sealey.co.uk