

Original Date: 010700
 Issue Date: 010700
 Version No: 0
 Date Modified: N/A

Item	Part No	Description	Item	Part No	Description
1	SA602/01	MOTOR HOUSING	24	SA602/24	STEEL BALL
2	SA602/02	HAMMER CASE BUSHING	25	SA602/25	SPRING
3	SA602/03	HAMMER CASE PILOT	26	SA602/26	REVERSE VALVE KNOB
4	SA602/04	HAMMER CASE	27	SA602/27	REVERSE VALVE SCREW
5	SA602/05	HAMMER CASE GASKET	28	SA602/28	BALL BEARING
6	SA602/06	HAMMER HOUSING SCREW	29	SA602/29	FRONT END PLATE
7	SA602/07	INSERT	30	SA602/30	CYLINDER PIN
8	SA602/08	MOTOR CLAMP WASHER	31	SA602/31	CYLINDER
9	SA602/09	GREASE FITTING	32	SA602/32	ROTOR
10	SA602/10	TRIGGER PIN	33	SA602/33	ROTOR BLADE
11	SA602/11	TRIGGER	34	SA602/34	REAR END PLATE
12	SA602/12	THROTTLE VALVE RING	35	SA602/35	PLUG
13	SA602/13	THROTTLE VALVE STEM	36	SA602/36	BALL BEARING
14	SA602/14	O-RING	37	SA602/37	MOTOR BEARING RETAINER
15	SA602/15	THROTTLE VALVE	38	SA602/38	REAR END PLATE PACKING
16	SA602/16	THROTTLE VALVE SPRING	39	SA602/39	HAMMER FRAME
17	SA602/17	AIR STRAINER	40	SA602/40	HAMMER FRAME REAR WASHER
18	SA602/18	FILTER NET	41	SA602/41	HAMMER PIN
19	SA602/19	WASHER	42	SA602/42	HAMMER
20	SA602/20	BOOT	43	SA602/43	ANVIL
21	SA602/21	REVERSE VALVE BUSHING	44	SA602/44	O-RING
22	SA602/22	O-RING	45	SA602/45	SOCKET RETAINER
23	SA602/23	REVERSE VALVE	46	SA602/46	TAPERED SCREW

INSTRUCTIONS FOR TWIN HAMMER 1/2" AIR IMPACT WRENCH Models: SA602

Thank you for purchasing a Sealey Product. Manufactured to a high standard this product will, if used according to these instructions and properly maintained, give you years of trouble free performance.

IMPORTANT: PLEASE READ THESE INSTRUCTIONS CAREFULLY. NOTE THE SAFE OPERATIONAL REQUIREMENTS, WARNINGS AND CAUTIONS. USE THIS PRODUCT CORRECTLY AND WITH CARE FOR THE PURPOSE FOR WHICH IT IS INTENDED. FAILURE TO DO SO MAY CAUSE DAMAGE AND/OR PERSONAL INJURY AND WILL INVALIDATE THE WARRANTY. PLEASE KEEP INSTRUCTIONS SAFE FOR FUTURE USE.

1. SAFETY INSTRUCTIONS

- WARNING!** Ensure health & safety, local authority, and general workshop practice regulations are adhered to when using this equipment.
- WARNING!** Disconnect from air supply before changing accessories or servicing.
- ✓ Maintain the wrench in good condition and replace any damaged or worn parts. Use genuine parts only. Unauthorised parts may be dangerous and will invalidate the warranty.
- WARNING!** Check correct air pressure is maintained and not exceeded. We recommend 90psi.
- ✓ Keep air hose away from heat, oil and sharp edges. Check air hose for wear before each use and ensure that all connections are secure.
- ✓ Only use impact sockets which are specifically designed for use with an impact wrench.
- ✓ Wear approved safety eye/face shield, ear defenders, and hand protection.
- WARNING!** Due to the possible presence of asbestos dust from brake linings, when working around vehicle brake systems we recommend you wear suitable respiratory protection
- ✓ Maintain correct balance and footing. Ensure the floor is not slippery and wear non-slip shoes.
- ✓ Keep children and non essential persons away from the working area.
- ✗ DO NOT use the wrench for a task it is not designed to perform.
- WARNING! DO NOT** use wrench if damaged or thought to be faulty. (Contact Service Agent).
- ✗ DO NOT use wrench unless you have been instructed in its use by a qualified person.
- ✗ DO NOT carry the wrench by the air hose, or yank the hose from the air supply.
- ✗ DO NOT operate wrench if you are tired, under the influence of alcohol, drugs or intoxicating medication.
- ✗ DO NOT carry wrench with your hand on the power trigger in order to avoid unintentional starting.
- ✗ DO NOT direct air from the air hose at yourself or others.
- ✓ When not in use disconnect from air supply and store in a safe, dry, childproof location.

2. INTRODUCTION & SPECIFICATIONS

Powerful 1/2" impact wrench with twin hammer mechanism and pressure feed lubrication system. Air motor features quality bearings, ductile steel end plates and carefully finished components to ensure smooth running and maximum power. Combination forward/reverse & speed selector. Suitable for heavy tyre shop use.

Drive size 1/2"
 Working/Max torque 400/480ft.lb
 Ultimate torque 500ft.lb
 Air consumption 4.2cfm
 Sound pressure 103db(A)

Operating pressure 90psi
 Air inlet size 1/4" BSP
 Weight 2.5kg
 Vibration 1m/s²
 Sound power 115db(A)

NOTE: It is our policy to continually improve products and as such we reserve the right to alter data, specifications and component parts without prior notice. **IMPORTANT:** No liability is accepted for incorrect use of this equipment. **WARRANTY:** Guarantee is 12 months from purchase date, proof of which will be required for any claim. **INFORMATION:** For a copy of our latest catalogue and promotions, call us on 01284 757525 and leave your full name and address including your postcode.

SEALEY POWER TOOLS Sole UK Distributor, Sealey Group, Bury St. Edmunds, Suffolk.
 01284 757500 01284 703534 E-mail: sales@sealey.co.uk
 Web: www.sealey.co.uk

3. PREPARING WRENCH FOR USE

3.1. Air Supply

- 3.1.1. Ensure wrench air valve (or trigger) is in the "off" position before connecting to the air supply.
- 3.1.2. You will require an air pressure of 90psi, and an air flow according to specification.
- 3.1.3. **WARNING!** Ensure the air supply is clean and does not exceed 90 psi while operating the wrench. Too high an air pressure and unclean air will shorten the product life due to excessive wear, and may be dangerous causing damage and/or personal injury.
- 3.1.4. Drain the air tank daily. Water in the air line will damage the wrench.
- 3.1.5. Clean air inlet filter weekly. Recommended hook-up procedure is shown in fig 1.
- 3.1.6. Line pressure should be increased to compensate for unusually long air hoses (over 8 metres). The minimum hose diameter should be 1/4" I.D. and fittings must have the same inside dimensions.
- 3.1.7. Keep hose away from heat, oil and sharp edges. Check hose for wear, and make certain that all connections are secure.

3.2. Couplings.

Vibration may cause failure if a quick change coupling is connected directly to the wrench. To overcome this, connect a leader hose to the wrench. A quick change coupling may then be used to connect the leader hose to the air line recoil hose. See fig 1 & 2.

fig 1

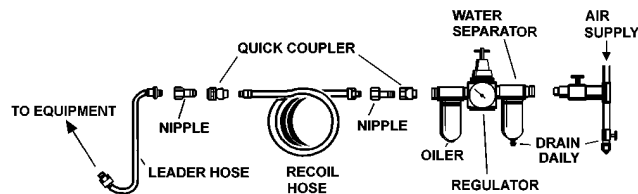
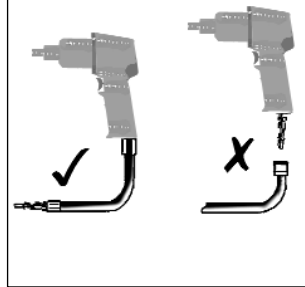


fig 2



4. OPERATING INSTRUCTIONS

- WARNING!** Ensure you read, understand and apply safety instructions before use.

- 4.1. Only use impact sockets which are specifically designed for use with an impact wrench.
- 4.2. Connect the wrench to the air hose as in chapter 3.
- 4.3. Place the socket over the subject nut and depress the trigger to operate the wrench.
- 4.4. To change direction push the button at the rear of the head assembly.
- 4.5. The flow of air may be regulated by turning the same button.

DO NOT use any additional force upon the wrench in order to remove a nut.

DO NOT allow wrench to free run for an extended period of time as this will shorten its life.

5. MAINTENANCE

- WARNING!** Disconnect wrench from air supply before changing accessories, servicing or performing maintenance. Replace or repair damaged parts. *Use genuine parts only. Unauthorised parts may be dangerous and will invalidate the warranty.*
- 5.1. Lubricate the air wrench daily with a few drops of Sealey air tool oil dripped into the air inlet.
- 5.2. Gearbox can be lubricated by passing grease through the nipple on the rear of wrench head.
- 5.3. Clean the wrench after use. DO NOT use worn, or damaged sockets.
- 5.4. Loss of power or erratic action may be due to the following:
 - a) Excessive drain on the air line. Moisture or restriction in the air pipe. Incorrect size or type of hose connectors. To remedy check the air supply and follow instructions in chapter 3.
 - b) Grit or gum deposits in the wrench may also reduce performance. If your model has an air strainer (located in the area of the air inlet), remove the strainer and clean it. Flush the wrench out with gum solvent oil or an equal mixture of SAE No 10 oil and paraffin. Allow to dry before use.
- 5.5. For a full service contact your local Sealey service agent.
- 5.6. When not in use, disconnect from air supply, clean wrench and store in a safe, dry, childproof location.

Declaration of Conformity



We, the sole importer into the UK, declare that the product listed here is in conformity with the following EEC standards and directives. The construction file for this product is held by the Manufacturer and may be inspected, by a national authority, upon request to Jack Sealey Ltd.

Air Impact Wrench Model: SA602

98/37/EC Machinery Directive
93/68/EEC Marking Directive

Signed by Mark Sweetman

1st July 2000

For Jack Sealey Ltd. Sole importer into the UK of Sealey Power Tools.