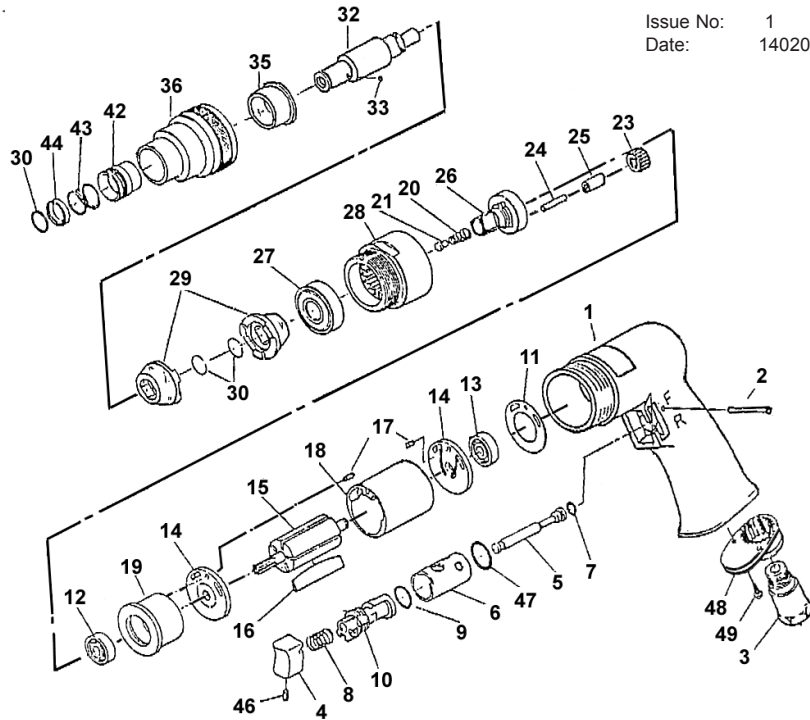


Issue No: 1
Date: 140202



Item	Part No	Description	Item	Part No	Description
1	SM-81401	Motor Housing	21	SM-81421	Spring Housing
2	SM-81402	Pin	23	SM-81423	Planet Gear
3	SM-81403	Air Inlet	24	SM-81424	Pin
4	SM-81404	Trigger	25	SM-81425	Spacer
5	SM-81405	Valve Stem	26	SM-81426	Work Spindle
6	SM-81406	Reverse Bushing	27	SM-81427	Ball Bearing
7	SM-81407	O-Ring	28	SM-81428	Clamp Nut
8	SM-81408	Valve Spring	29	SM-81429	Drive Dog
9	SM-81409	O-Ring	30	SM-81430	Retaining Ring
10	SM-81410	Reverse Lever	32	SM-81432	Cam Spindle
11	SM-81411	Motor Gasket	33	SM-81433	Steel Ball
12	SM-81412	Ball Bearing	35	SM-81435	Clutch Bushing
13	SM-81413	Ball Bearing	36	SM-81436	Clutch Housing
14	SM-81414	End Plate	42	SM-81442	Ball Retainer
15	SM-81415	Rotor	43	SM-81443	Spring
16	SM-81416	Rotor Blades	44	SM-81444	Washer
17	SM-81417	Pin	46	SM-81446	Set Screw
18	SM-81418	Cylinder	47	SM-81447	O-Ring
19	SM-81419	Front End Plate	48	SM-81448	Exhaust Diffuser
20	SM-81420	Spring	49	SM-81449	Screw

NOTE: It is our policy to continually improve products and as such we reserve the right to alter data, specifications and component parts without prior notice. **IMPORTANT:** No liability is accepted for incorrect use of this equipment. **WARRANTY:** Guarantee is 12 months from purchase date. proof of which will be required for any claim. **INFORMATION:** For a copy of our latest catalogue and promotions call us on 01284 757525 and leave your full name and address including your postcode.



Sole UK Distributor, Sealey Group, Bury St. Edmunds, Suffolk.



01284 757500



01284 703534

E-mail: sales@sealey.co.uk



INSTRUCTIONS FOR
AIR PISTOL SCREWDRIVER
Model: SA58

Thank you for purchasing a Sealey Product. Manufactured to a high standard this product will, if used according to these instructions and properly maintained, give you years of trouble free performance.

IMPORTANT: PLEASE READ THESE INSTRUCTIONS CAREFULLY. NOTE THE SAFE OPERATIONAL REQUIREMENTS, WARNINGS AND CAUTIONS. USE THIS PRODUCT CORRECTLY AND WITH CARE FOR THE PURPOSE FOR WHICH IT IS INTENDED. FAILURE TO DO SO MAY CAUSE DAMAGE AND/OR PERSONAL INJURY AND WILL INVALIDATE THE WARRANTY. PLEASE KEEP INSTRUCTIONS SAFE FOR FUTURE USE.

1. SAFETY INSTRUCTIONS

- WARNING!** Disconnect from air supply before changing accessories or servicing.
- WARNING!** Check correct air pressure is maintained and not exceeded. We recommend 90psi.
- WARNING! DO NOT** use screwdriver if damaged or faulty. Contact your local service agent.
- DO NOT** use the screwdriver for a task it is not designed to perform.
- DO NOT** hold the workpiece by hand. Use clamps or a vice to secure the workpiece.
- DO NOT** use screwdriver unless you have been instructed in its use by a qualified person.
- DO NOT** drop, throw or abuse the screwdriver.
- DO NOT** carry the screwdriver by the air hose, or yank the hose from the air supply.
- DO NOT** operate screwdriver if you are tired or under the influence of alcohol, drugs or intoxicating medication.
- DO NOT** carry screwdriver with your hand on the power trigger in order to avoid unintentional starting.
- DO NOT** direct air from the air hose at yourself or others.
- Follow all workshop health & safety rules, regulations, and conditions when using screwdriver.
- Maintain screwdriver in good condition and replace any damaged or worn parts. *Use genuine parts only. Unauthorised parts may be dangerous and will invalidate the warranty.*
- Keep air hose away from heat, oil and sharp edges. Check air hose for wear before each use and ensure that all connections are secure.
- Keep screwdriver bits clean and in good condition for best and safest performance.
- Maintain correct balance and footing. Ensure the floor is not slippery and wear non-slip shoes.
- Secure unstable work-piece with a clamp, vice or other adequate holding device.
- Keep children and unauthorised persons away from the working area.
- Ensure the screwdriver bit is secure in the chuck.
- Wear approved safety eye and ear protection.
- Avoid unintentional starting.
- When not in use disconnect from air supply and store in a safe, dry, childproof location.



2. INTRODUCTION & SPECIFICATIONS

Pistol-grip style, air operated screwdriver with positive clutch operation. Smooth air motor runs on high quality ball bearings for long life and reliability. Fully reversible drive with finger-tip control set behind trigger. Quick release chuck which accepts 6mm hex drive bits.

Chuck size 1/4" - 6mm Hex
Free speed 1800rpm
Air consumption 4cfm

Operating pressure. 90psi
Air inlet size 1/4" BSP
Weight 2.7kg

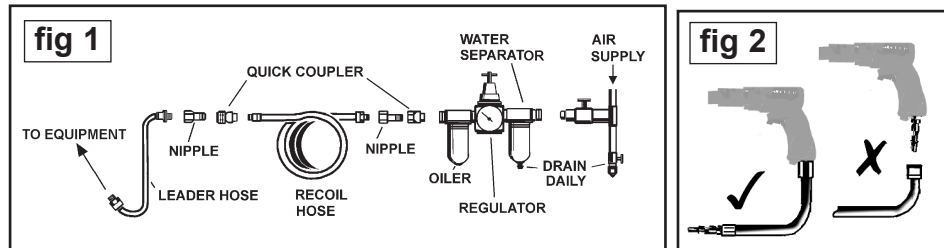
3. PREPARING SCREWDRIVER FOR USE

3.1. Air Supply

- 3.1.1. Ensure screwdriver air valve (or trigger) is in "off" position before connecting to air supply.
- 3.1.2. You will require an air pressure of 90psi, and an air flow according to specification.
- 3.1.3. **WARNING!** Ensure the air supply is clean and does not exceed 90 psi while operating the screwdriver. Too high an air pressure and unclean air will shorten the product life due to excessive wear, and may be dangerous causing damage and/or personal injury.
- 3.1.4. Drain the air tank daily. Water in the air line will damage the screwdriver.
- 3.1.5. Clean air inlet filter weekly. Recommended hook-up is shown in fig 1.
- 3.1.6. Line pressure should be increased to compensate for unusually long air hoses (over 8 metres). The minimum hose diameter should be 1/4" I.D. and fittings must have the same inside dimensions.
- 3.1.7. Keep hose away from heat, oil and sharp edges. Check hose for wear, and make certain that all connections are secure.

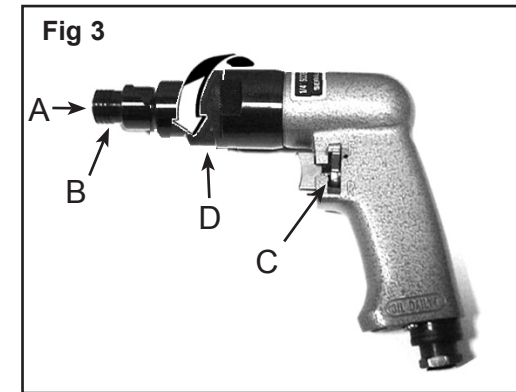
3.2. Couplings

- 3.2.1. Vibration may cause failure if a quick change coupling is connected directly to screwdriver. To overcome this, connect a leader hose to the screwdriver. A quick change coupling may then be used to connect the leader hose to the air line recoil hose. See fig 1 & 2.



4. OPERATING INSTRUCTIONS

- WARNING!** Ensure you read, understand and apply safety instructions before use.
 - WARNING!** Disconnect screwdriver from air supply before changing accessories, servicing or performing maintenance.
 - X** DO NOT allow screwdriver to free run for an extended period of time as this will shorten its life.
- 4.1. Push driver bit into self locking chuck (fig.3.A.) and ensure secure. To release bit, push chuck collar (fig. 3.B.) forward and pull bit out.
 - 4.2. Connect the screwdriver to the air hose as in Section 3.
 - 4.3. Check that the screwdriver is set to operate in the required direction. The screwdriver direction is changed by switching the reverse lever (fig. 3.C.) behind the trigger.
 - 4.4. Locate the bit in the workpiece, apply a positive force to the screwdriver in order to engage the drive dogs.
 - 4.5. Depress the trigger to operate the screwdriver.



5. MAINTENANCE

- WARNING!** Disconnect screwdriver from air supply before changing accessories, servicing or performing maintenance. Replace or repair damaged parts. *Use genuine parts only. Unauthorised parts may be dangerous and will invalidate the warranty.*
- 5.1. If the air system does not include an oiler, lubricate the air screwdriver daily with a few drops of Sealey air tool oil dripped into the air inlet to prolong its life.
 - 5.2. Clean the screwdriver after use.
 - 5.3. At regular intervals, remove the clutch housing (fig. 3.D.) by unscrewing in the direction shown, and apply a small quantity of suitable grease to the dog clutch.
 - 5.4. Loss of power or erratic action may be due to the following:
 - a) Excessive drain on the air line. Moisture or restriction in the air pipe. Incorrect size or type of hose connectors. To remedy check the air supply and follow instructions in section 3.
 - b) Grit or gum deposits in the screwdriver may also reduce performance. If your model has an air strainer (located in the area of the air inlet), remove the strainer and clean it. Flush the screwdriver out with gum solvent oil or an equal mixture of SAE No 10 oil and paraffin. Allow to dry before use.
 - 5.5. When not in use, disconnect from air supply, clean screwdriver and store in a safe, dry, childproof location.

Declaration of Conformity

CE We, the sole importer into the UK, declare that the product listed here is in conformity with the following EEC standards and directives. The construction file for this product is held by the Manufacturer and may be inspected, by a national authority, upon request to Jack Sealey Ltd.

**Air Pistol Screwdriver
Model: SA58**

98/37/EC Machinery Directive
93/68/EEC Marking Directive

Signed by Mark Sweetman

28th May 2008

For Jack Sealey Ltd. Sole importer into the UK of Sealey Power Tools.