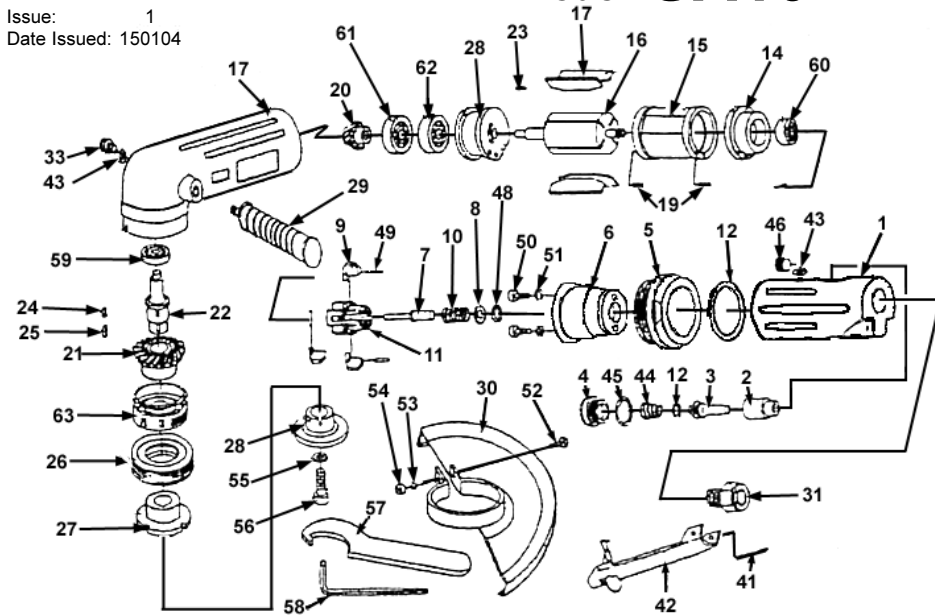


PARTS LIST FOR: 180mm ANGLE GRINDER Model: SA16

Issue: 1
Date Issued: 150104



ITEM	PART NO.	DESCRIPTION	ITEM	PART NO.	DESCRIPTION	ITEM	PART NO.	DESCRIPTION
01.	SA16/01	HANDLE	19.	SA16/19	SPRING PIN	45.	SA16/45	GASKET RING
02.	SA16/02	BUSH	20.	SA16/20	BEVEL PINION	46.	SA16/46	PLUG
03.	SA16/03	THROTTLE	21.	SA16/21	BEVEL GEAR	48.	SA16/48	STOP RING
04.	SA16/04	CAP SCREW	22.	SA16/22	SHAFT	49.	SA16/49	SPRING PIN
05.	SA16/05	CLAMP NUT	23.	SA16/23	KEY (3X3X10)	50.	SA16/50	HEX CAP BOLT
06.	SA16/06	GOVERNOR CASE	24.	SA16/24	KEY (5X5X10)	51.	SA16/51	SPRING WASHER
07.	SA16/07	VALVE	25.	SA16/25	KEY (4X4X15)	52.	SA16/52	HEX HEAD BOLT
08.	SA16/08	WASHER	26.	SA16/26	SCREW	53.	SA16/53	SPRING WASHER
09.	SA16/09	PENDULUM	27.	SA16/27	DISC	54.	SA16/54	HEX NUT
10.	SA16/10	GOVERNOR SPRING	28.	SA16/28	DISC	55.	SA16/55	WASHER
11.	SA16/11	GOVERNOR BODY	29.	SA16/29	GRIP HANDLE	56.	SA16/56	SCREW
12.	SA16/12	GASKET RING	30.	SA16/30	DISC COVER	57.	SA16/57	SPANNER
13.	SA16/13	CASING	31.	SA16/31	INLET BUSHING	58.	SA16/58	HEX KEY
14.	SA16/14	PLATE	33.	SA16/33	OIL PLUG SCREW	59.	BEARING	B/608Z
15.	SA16/15	CYLINDER	41.	SA16/41	USE SA15/51 PIN	60.	BEARING	B/6200Z
16.	SA16/16	ROTOR	42.	SA16/42	THROTTLE LEVER	61.	BEARING	B/6201Z
17.	SA16/17	ROTOR VANE	43.	SA16/43	O-RING	62.	BEARING	B/6201Z
18.	SA16/18	FRONT END PLATE	44.	SA16/44	CONICAL SPRING	63.	BEARING	B/6303


NOTE: It is our policy to continually improve products and as such we reserve the right to alter data, specifications and component parts without prior notice. **IMPORTANT:** No liability is accepted for incorrect use of this equipment. **WARRANTY:** Guarantee is 12 months from purchase date, proof of which will be required for any claim. **INFORMATION:** For a copy of our latest catalogue and promotions call us on 01284 757525 and leave your full name and address, including postcode.

Declaration of Conformity We, the sole importer into the UK, declare that the product listed here is in conformity with the following standards and directives. The construction file for this product is held by the Manufacturer and may be inspected, by a national authority, upon request to Jack Sealey Ltd.

180mm Angle Grinder
Model: SA16

98/37/EC Machinery Directive
93/68/EEC Marking Directive

Signed by Mark Sweetman



25th February 2005

For Jack Sealey Ltd. Sole importer into the UK of Sealey Power Tools.

SEALEY POWER TOOLS Sole UK Distributor, Sealey Group, Bury St. Edmunds, Suffolk.
E-mail: sales@sealey.co.uk Web address: www.sealey.co.uk 01284 757500 01284 703534

INSTRUCTIONS FOR: 180mm ANGLE GRINDER Model: SA16

Thank you for purchasing a Sealey Product. Manufactured to a high standard this product will, if used according to these instructions and properly maintained, give you years of trouble free performance.

IMPORTANT: PLEASE READ THESE INSTRUCTIONS CAREFULLY. NOTE THE SAFE OPERATIONAL REQUIREMENTS, WARNINGS AND CAUTIONS. USE THIS PRODUCT CORRECTLY AND WITH CARE FOR THE PURPOSE FOR WHICH IT IS INTENDED. FAILURE TO DO SO MAY CAUSE DAMAGE AND/OR PERSONAL INJURY AND WILL INVALIDATE THE WARRANTY. PLEASE KEEP INSTRUCTIONS SAFE FOR FUTURE USE.

1. SAFETY INSTRUCTIONS

- WARNING!** Ensure that Health & Safety, local authority, and general workshop practice regulations are adhered to when using this equipment.
- WARNING!** Only persons holding a grinding wheel certificate are authorised to change grinding discs.
- WARNING!** Disconnect from air supply before changing accessories or servicing.
- ✓ Maintain the grinder in good condition (use an authorised service agent).
- ✓ Replace or repair damaged parts. Use genuine parts only. Unauthorised parts may be dangerous and will invalidate the warranty.
- ✓ Use in a suitable work area. Keep area free from unrelated materials and ensure that there is adequate lighting.
- ✓ Before each use check abrasive disc for condition. If worn or damaged replace immediately.
- ✓ Ensure that the speed rating (rpm) of the disc is the same as, or greater than, the speed rating of the grinder.
- ✓ Ensure that there are no flammable or combustible materials near the work area.
- WARNING!** Always wear approved eye (or face) and hand protection when operating the grinder.
- ✓ Use face, dust, or respiratory protection in accordance with COSHH regulations.
- ✓ Depending on the task, grinder noise level may exceed 86dB in which case wear safety ear defenders.
- ✓ Remove ill fitting clothing. Remove ties, watches, rings and other loose jewellery and contain and/or tie back long hair.
- ✓ Wear appropriate protective clothing and keep hands and body clear of working parts.
- ✓ Maintain correct balance and footing. Ensure that the floor is not slippery and wear non-slip shoes.
- ✓ Keep children and unauthorised persons away from the work area.
- ✓ Check moving parts alignment on a regular basis.
- ✓ Ensure that the workpiece is secure before operating the grinder. Never hold a workpiece by hand.
- ✓ Check the workpiece to ensure there are no protruding screws, bolts, nuts etc.
- ✓ Avoid unintentional starting.
- WARNING!** Ensure correct air pressure is maintained and not exceeded. Recommended pressure 70-90psi
- ✓ Keep air hose away from heat, oil and sharp edges. Check air hose for wear before each use and ensure that all connections are secure.
- ✓ Prolonged exposure to vibration from this grinder poses a health risk. It is the owner's responsibility to correctly assess the potential hazard and issue guidelines for safe periods of use and offer suitable protective equipment.
- x **DO NOT** use the grinder for a task it is not designed to perform.
- x **DO NOT** operate grinder if any parts are damaged or missing as this may cause failure and/or personal injury.
- ▲ **DANGER!** Use of damaged discs may cause damage and/or personal injury.
- Grinding discs used in association with this machine shall be of an adequate speed rating and suitable for the job in hand. The discs shall be made in accordance with British Standard BS ISO 525. Only persons holding a grinding wheel certificate are authorised to change grinding discs.
- WARNING!** DO NOT grind any materials containing asbestos.
- x **DO NOT** carry the grinder by the hose, or yank the hose from the air supply.
- x **DO NOT** force, or apply heavy pressure to, the grinder, let the tool do the work.
- x **DO NOT** place air line attachments close to your face and do not point them at other people or animals.
- x **DO NOT** operate grinder when you are tired or under the influence of alcohol, drugs or intoxicating medication.
- x **DO NOT** use the grinder where there are flammable liquids, solids or gases, such as paint solvents and including waste wiping or cleaning rags etc.
- x **DO NOT** carry the grinder with your finger on the power lever.
- x **DO NOT** direct air from the air line at yourself or others.
- ✓ When not in use disconnect from air supply and store in a safe, dry, childproof location.

DANGER OF FIRE/EXPLOSION HAZARD

- WARNING!** The grinding process can produce streams of sparks (especially when grinding metal) which are a potential source of ignition.
- x **DO NOT** use the grinder where there are flammable liquids, solids or gases.
- x **DO NOT** allow grinder sparks to make contact with the operators clothing or any other fabric such as cleaning rags. Fabrics contaminated with inflammable materials such as petrol, oil, grease, paint and solvents are a particular fire hazard.
- ✓ To reduce the risk of clothing catching fire the operator should wear wool or cotton outer garments treated with a fire retardant, in preference to man-made fibres.

1.2. LEAD PAINT WARNING!

Paint once contained lead as a traditional ingredient. Contact with the dust from the removal of such paint is toxic and must therefore be avoided. The following action must be taken before using the grinder on a surface that you suspect may contain lead paint.

1. User must determine potential hazard relating to age of paint to be removed (modern paints do not have lead content).
2. **DANGER!** Keep all people and pets away from the working area. The following are particularly vulnerable to the effects of lead paint dust: *Pregnant women, babies and children.*
3. We recommend personal protection by using the following safety items:
 - a) Paint Spray Respirator (Our ref SSP16EN)
 - b) PE Coated Hooded Coverall (Our ref SSP266).
 - c) Latex Gloves (Our ref SSP24).
4. Take adequate measures to contain the paint dust, flakes and scrapings.
5. Continue to wear safety equipment as in (3) above and thoroughly clean all areas when work is complete. Ensure that paint waste is disposed of in sealed bags or containers according to local regulations.

Risk of Hand Arm Vibration Injury

180mm Angle Grinder Model No. SA16 when operated in accordance with these instructions and tested in accordance with EN 28662-2: 1994 results in the following vibration emission declared in accordance with BS EN12096: 1996.

Measured vibration emission value:4m/s²

Uncertainty:1.6m/s²

These values are suitable for comparison with emission levels of other tools that have been subject to the same test.

This tool may cause hand-arm vibration syndrome if its use is inadequately managed.

Recommended Measures to reduce risk of hand-arm vibration syndrome:

This tool should not be used by an individual regularly for more than 6.4 hours in any 8 hour period.

This duration of use should be reduced if the individual is exposed to hand-arm vibration from other sources.

2. INTRODUCTION & SPECIFICATION

The SA16 has a stove-enamel finish on aluminium bevel gear/motor housing and throttle body. Fitted with side handle. Includes throttle safety device to prevent accidental operation and steel disc guard for added safety. Supplied with spanners. Suitable for heavy workshop use. Not suitable for use with cutting discs.

Disc Diameter180mm
Free Speed7600rpm
Operating Pressure90psi
Air Consumption21cfm
Air Inlet1/2" BSP
Sound Pressure86dB(A)
Vibration4m/s ²
Weight1.9kg
Grinding Disc Part No.PTC/180G



3. PREPARING GRINDER FOR USE

3.1. Air Supply

Recommended hook-up is shown in fig 1.

- 3.1.1. Ensure that the grinder air valve (or throttle) is in the "off" position before connecting to the air supply.
- 3.1.2. You will require an air pressure between 70-90psi, and an air flow according to the specification above.
- 3.1.3. **WARNING!** Ensure the air supply is clean and does not exceed 90 psi while operating the grinder. Too high an air pressure and/or unclean air will cause excessive wear, and may be dangerous, causing damage and/or personal injury.
- 3.1.4. Drain the air tank daily. Water in the air line will damage the grinder and invalidate your warranty.
- 3.1.5. Clean air inlet filter weekly.
- 3.1.6. Line pressure should be increased to compensate for unusually long air hoses (over 8 metres). The minimum hose diameter should be 1/4" I.D. and fittings must have the same inside dimensions.
- 3.1.7. Keep hose away from heat, oil and sharp edges. Check hoses for wear, and make certain that all connections are secure.

3.2. Couplings

Vibration may cause failure if a quick change coupling is connected directly to the grinder. To prevent this, connect a leader hose to the grinder. A quick change coupling may then be used to connect the leader hose to the air line recoil hose. See figs. 1 & 2.

fig. 1

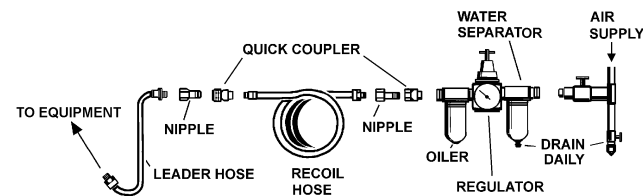
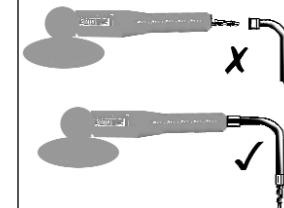


fig. 2



4. OPERATING INSTRUCTIONS

- WARNING! Ensure that you read, understand and apply the safety instructions before use.**

4.1. Assembly

- 4.1.1. The SA16 comes with a handle, one spanner and a hex key.
- 4.1.2. The handle screws into the left side of the head.
- 4.1.3. Remove the disc locking flange clamp screw from the spindle. Use the spanner and hex key supplied to hold the spindle and loosen/tighten the lock nut.
- 4.1.4. Fit the grinding disc to the spindle and retain with the flange nut. Use only discs with speed ratings equal to, or higher than, the speed rating of the grinder.
- 4.1.5. Connect air supply to grinder. Push safety lever with thumb and squeeze the throttle lever to check that the grinder is working correctly.

- WARNING! DO NOT USE DISCS THAT ARE DAMAGED, OR SUSPECTED OF DAMAGE.**

Before using a grinding disc ensure there are no fissures or cracks. Once mounted on the grinder test the disc before use by facing the grinder in a safe direction (pointing away from yourself, others and vulnerable items) and operate for a short time.

- DANGER! Use of damaged discs may cause damage and/or personal injury.**

Grinding discs used in association with this machine shall be of an adequate speed rating and suitable for the job in hand. The discs shall be made in accordance with BS ISO 525. Only persons holding a grinding wheel certificate are authorised to change grinding discs.

4.2. Operating

DO NOT apply excessive pressure, let the grinder do the work for you. Start the grinder and bring the disc to the work surface evenly and slowly. Move the grinder back and forth in overlapping areas. Remove the grinding disc from the work surface before stopping the grinder. Regularly check the condition of the disc and always change if worn, cracked or otherwise damaged. **DO NOT** run the grinder off the workpiece for extended periods as this will shorten the life of the bearings.

5. MAINTENANCE

- WARNING! Disconnect the grinder from air supply before changing the disc, servicing or performing maintenance. Replace or repair damaged parts. Use genuine parts only. Unauthorised parts may be dangerous and will invalidate the warranty.**

- 5.1. Lubricate the grinder daily with a few drops of good grade air tool oil, such as Sealey ATO/500 or ATO1000, dripped into the air inlet before use or dispensed automatically through an air system oiler, such as Sealey model SA100L.
- 5.2. Clean the grinder after use and change the disc when worn or damaged.
- 5.3. Loss of power or erratic action may be due to the following:
 - a) Excessive drain on the air supply. Moisture or restriction in the air line. Incorrect size or type of hose connectors. To remedy check the air supply and follow instructions in Section 3.
 - b) Grit or gum deposits in the grinder may also reduce performance. Flush the grinder with gum solvent oil or an equal mixture of SAE No 10 oil and kerosene. Allow to dry before use.

If you continue to experience problems, contact your local Sealey service agent.

- 5.4. When not in use, disconnect from air supply, clean grinder and store in a safe, dry, childproof location.