

Thank you for purchasing a Sealey product. Manufactured to a high standard this product will, if used according to these instructions and properly maintained, give you years of trouble free performance.

IMPORTANT: PLEASE READ THESE INSTRUCTIONS CAREFULLY. NOTE THE SAFE OPERATIONAL REQUIREMENTS, WARNINGS & CAUTIONS. USE THE PRODUCT CORRECTLY AND WITH CARE FOR THE PURPOSE FOR WHICH IT IS INTENDED. FAILURE TO DO SO MAY CAUSE DAMAGE AND/OR PERSONAL INJURY, AND WILL INVALIDATE THE WARRANTY. PLEASE KEEP INSTRUCTIONS SAFE FOR FUTURE USE.

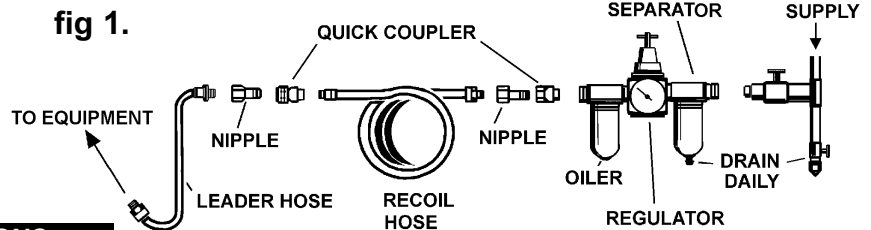
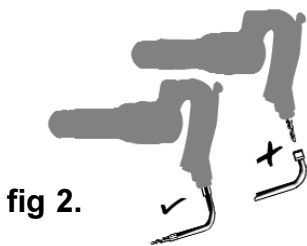
1. SAFETY INSTRUCTIONS

- ❑ **WARNING!** Ensure Health & Safety, local authority, and general workshop practice regulations are adhered to when using this equipment.
- ❑ **WARNING!** Disconnect the hammer from the air supply before changing accessories, servicing or performing any maintenance.
- ✓ Keep the hammer clean and maintain it in good condition (use an authorised service agent).
- ✓ Replace or repair damaged parts. Use genuine parts only. Unauthorised parts may be dangerous and will invalidate the warranty.
- ✓ Keep the work area clean, uncluttered and ensure there is adequate lighting.
- ✓ Ensure chisels are correctly rated for the job, and DO NOT use damaged or suspect chisels.
- ❑ **WARNING!** Wear approved safety eye or face protection, ear defenders, and if dust is generated, respiratory protection.
- ✓ Keep hands and body clear of the work when operating the hammer.
- ✓ Maintain correct balance and footing. Ensure the floor is not slippery and wear non slip-shoes.
- ✓ Remove ill fitting clothing. Remove ties, watches, rings, and other loose jewellery, and contain and/ or tie back long hair.
- ✓ Keep children and unauthorised persons away from the working area.
- ✓ Secure non stable work piece with a clamp, vice or other adequate holding device.
- ✓ Avoid unintentional starting.
- ❑ **WARNING!** ensure correct air pressure is maintained and not exceeded.
- ✓ Keep air hose away from heat, oil and sharp edges. Check air hose for wear before each use, and ensure that all connections are secure.
- ✗ DO NOT force the hammer to achieve a task it was not designed to perform.
- ✗ DO NOT operate the hammer if any parts are damaged or missing as this may cause failure or possible personal injury.
- ❑ **WARNING!** DO NOT cut, grind, saw, sand any materials containing asbestos.
- ✗ DO NOT switch the hammer on whilst the chisel is in contact with the workpiece.
- ✗ DO NOT carry the by the hose, or yank the hose from the air supply.
- ✗ DO NOT hold the workpiece by hand. Use clamps or a vice (not included) to secure the workpiece. Available from your Sealey dealer.
- ✗ DO NOT allow untrained persons to operate the hammer.
- ✗ DO NOT operate the hammer when you are tired, under the influence of alcohol, drugs or intoxicating medication.
- ✗ DO NOT use hammer where there is flammable liquids, solids or gases such as paint solvents, including waste wiping or cleaning rags etc.
- ✗ DO NOT leave the hammer operating unattended.
- ✗ DO NOT carry the hammer with your finger on the power switch.
- ✗ DO NOT direct air from the air hose at yourself or others.
- ✓ When work is complete ensure the air supply is turned off.
- ✓ When not in use disconnect from the air supply and store in a safe, dry, child proof area.

2. AIR SUPPLY

The recommended hook-up is shown in fig 1.

- 2.1. Ensure the air valve is in the "off" position before connecting to the air supply.
- 2.2. You will require an air pressure of more than 6bar (90psi) , and an air volume of more than 4cfm for operating the unit.
- 2.3. ❑ **WARNING!** Ensure the air supply does not exceed 140PSI while operating the hammer. Too high an air pressure and unclean air will shorten the product life due to excessive wear, and may be dangerous causing possible damage and/or personal injury.
- 2.4. Drain the air tank daily. Water in the air line will damage the tool.
- 2.5. Clean the air inlet filter screen weekly.
- 2.6. Line pressure should be increased to compensate for unusually long air hoses (over 8 metres). The minimum hose diameter should be 10mm I.D. and fittings must have the same inside dimensions.
- 2.7. Keep hose away from heat, oil and sharp edges. Check hoses for wear, and make certain that all connections are secure.
- 2.8. **Couplings.** Vibration may cause failure if a quick change coupling is connected directly to the wrench. To overcome this, connect a leader hose to the wrench. A quick change coupling may then be used to connect the leader hose to the air line recoil hose. See fig 1 & 2.



3. INTRODUCTION & SPECIFICATIONS

The air hammer is designed primarily for use on vehicle bodywork. We do not recommend any other use. Contact your supplier immediately should there be any missing, or damaged parts. Chisels not included.

Chisel Shank Size12.7 x 47mm
 Speed3000bpm
 Air Consumption4cfm

Operating Pressure90psi
 Air Inlet Size1/4" BSP
 Piston Stroke20mm

Vibration Level6.6m/s²
 Sound Pressure Level96.5dB
 Sound Power Level107.7dB

Risk of Hand Arm Vibration Injury.

The SA120 Air Hammer, when operated in accordance with these instructions and tested in accordance with EN 28662-2: 1994, results in the following vibration emission declared in accordance with BS EN12096: 1996.

Measured vibration emission value:6.6m/s² Uncertainty: 2.64m/s²

These values are suitable for comparison with emission levels of other tools that have been subject to the same test. This tool may cause hand-arm vibration syndrome if its use is inadequately managed.

Recommended Measures to reduce risk of hand-arm vibration syndrome:

This item represents a low Hand Arm Vibration risk to users. The calculated minimum usage period exceeds 8 hours. We recommend appropriate safety equipment is utilised and regular breaks for the operator are employed to reduce any residual risk of fatigue or repetitive strain injury.

4. OPERATING INSTRUCTIONS

Ensure you have read understood and follow the safety instructions in Section 1.

- 4.1. Attach the retaining spring by holding the front end of the spring and screwing it onto the gun retainer.
- 4.2. Insert the chisel using the spring's hooked end to hold the chisel in place.
- 4.3. Attached the tool to the air supply as mentioned in Section 2.
- 4.4. To operate the hammer, squeeze the trigger.

NOTE: The air regulator may be used as a means of throttle control.

Chisel: Available from your authorised Sealey Dealer. Part No: SA120/P - Pointed SA120/F - Flat.

5. MAINTENANCE

WARNING! Disconnect the hammer from the air supply before changing accessories, servicing or performing any maintenance.

- 5.1 Keep the hammer oiled for optimum performance
Lubricate daily with a good grade of air oil such as Sealey ATO/500 or ATO/1000. If no air tool oiler is used, a teaspoon of oil can be poured into the tool's air inlet, or into the hose at the nearest connection to the air supply. Then run the hammer for a short time.
- 5.2. When not in use, always turn off air supply.

Note: The following external factors may cause loss of power and effect hammer performance:

The air system.

Reduced compressor output, excessive drain on the air line, moisture or restrictions in air pipes or in the use of hose connection having the improper size. Correct the condition accordingly.

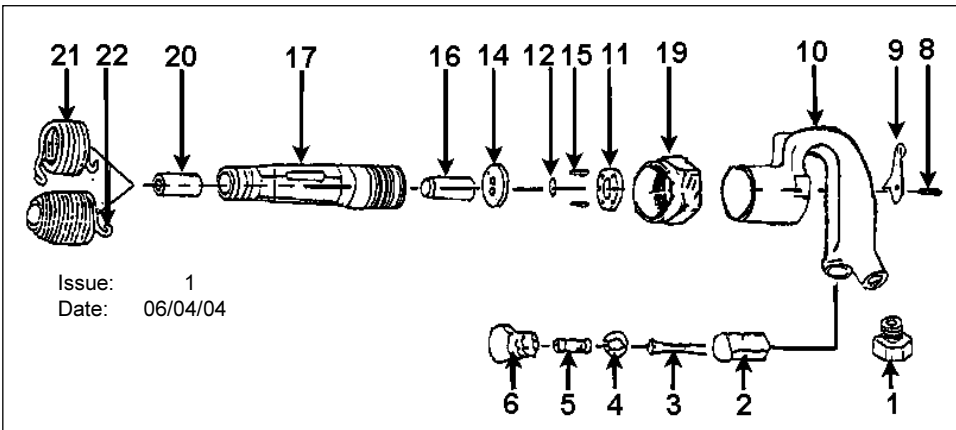
The Tool

Grit or gum deposits in the tool. Correct by cleaning the air stainer,if present, and flushing out the tool with gum solvent oil or an equal mixture of

SAE No.10 oil and kerosene.

If despite taking action as for above situations the tool function is impaired, contact your local Sealey service dealer for advice.

6. PARTS LIST



Issue: 1
Date: 06/04/04

No	PART No	DESCRIPTION
01	SA120/1	HOSE ADAPTOR
02	SA120/2	THROTTLE BUSHING
03.	SA120/3	THROTTLE ROD
04.	SA120/4	O-RING
05.	SA120/5	SPRING
06.	SA120/6	THROTTLE CAP
08	SA120/8	PIN-THROTTLE LEVER
09.	SA120/9	LEVER THROTTLE
10.	SA120/10N	HANDLE
11.	SA120/11	LID-UPPER VALVE CASE
12.	SA120/12	VALVE
14.	SA120/14	LID-LOWER VALVE CASE
15.	SA120/15	PIN-DOWEL
16.	SA120/16	PISTON
17.	SA120/17	CYLINDER
19.	SA120/19N	SHIELD-LOCK
20.	SA120/20	CYLINDER BUSHING
21.	SA120/21	RETAINER-QUICK CHANGE
22.	SA120/22	RETAINER-BEE HIVE TYPE

<p>AIR HAMMER Model SA120</p> <p>98/37/EC Machinery Directive 93/68/EEC CE Marking Directive</p>	<p>Declaration of Conformity We, the sole importer into the UK, declare that the product listed here is in conformity with the following standards and directives</p> <p>CE The construction file for this product is held by the Manufacturer and may be inspected, by a National Authority, on request to Jack Sealey Ltd</p> <p>Signed by Mark Sweetman 5th April 2004</p> <p style="text-align: right;"><i>For Jack Sealey Ltd. Sole importer into the UK of Sealey Power Tools</i></p>
--	--

NOTE: It is our policy to continually improve products and as such we reserve the right to alter data, specifications and component parts without prior notice. **IMPORTANT:** No liability is accepted for incorrect use of this equipment. **WARRANTY:** Guarantee is 12 months from purchase date. proof of which will be required for any claim. **INFORMATION:** Call us for a copy of our latest catalogue and promotions on 01284 757525 and leave your full name and address including your postcode.

	<p>Sole UK Distributor Sealey Group, Bury St. Edmunds, Suffolk.</p>	<p> 01284 757500 01284 703534</p>	<p> www.sealey.co.uk sales@sealey.co.uk</p>
--	---	--	--