

Thank you for purchasing a Sealey product. Manufactured to a high standard this product will, if used according to these instructions and properly maintained, give you years of trouble free performance.



**IMPORTANT: PLEASE READ THESE INSTRUCTIONS CAREFULLY. NOTE THE SAFE OPERATIONAL REQUIREMENTS, WARNINGS & CAUTIONS. USE THE PRODUCT CORRECTLY AND WITH CARE FOR THE PURPOSE FOR WHICH IT IS INTENDED. FAILURE TO DO SO MAY CAUSE DAMAGE AND/OR PERSONAL INJURY AND WILL INVALIDATE THE WARRANTY. PLEASE KEEP INSTRUCTIONS SAFE FOR FUTURE USE.**

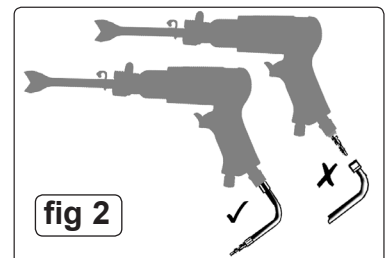
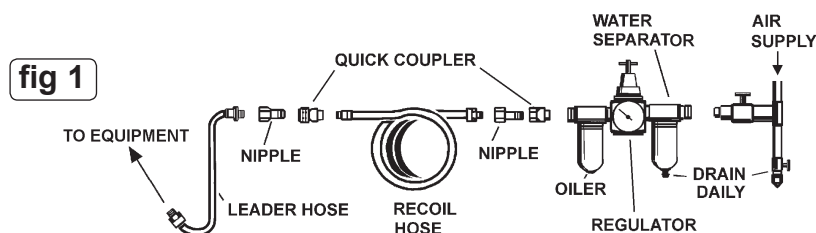
### 1. SAFETY INSTRUCTIONS

- WARNING!** Ensure Health & Safety, local authority and general workshop practice regulations are adhered to when using this equipment.
- WARNING!** Disconnect the hammer from the air supply before changing accessories, servicing or performing any maintenance.
- ✓ Keep the hammer clean and maintain it in good condition (use an authorised service agent).
- ✓ Replace or repair damaged parts. Use genuine parts only. Unauthorised parts may be dangerous and will invalidate the warranty.
- ✓ Keep the work area clean and uncluttered. Ensure that there is adequate lighting.
- ✓ Ensure chisels are correctly rated for the job. DO NOT use damaged or suspect chisels.
- WARNING!** Wear approved safety eye or face protection, ear defenders and, if dust is generated, respiratory protection.
- ✓ Keep hands and body clear of the work when operating the hammer.
- ✓ Maintain correct balance and footing. Ensure that the floor is not slippery and wear non-slip shoes.
- ✓ Remove ill fitting clothing. Remove ties, watches, rings and other loose jewellery and contain and/or tie back long hair.
- ✓ Keep children and unauthorised persons away from the work area.
- ✓ Secure unstable workpiece with a clamp, vice or other adequate holding device.
- ✓ Avoid unintentional starting.
- WARNING!** Ensure that the correct air pressure is maintained and not exceeded.
- ✓ Keep air hose away from heat, oil and sharp edges. Check air hose for wear before each use and ensure that all connections are secure.
- ✗ DO NOT use the hammer for a task it is not designed to perform.
- ✗ DO NOT operate the hammer if any parts are damaged or missing as this may cause failure and/or personal injury.
- WARNING!** DO NOT chisel into any materials containing asbestos.
- ✗ DO NOT switch the hammer on whilst the chisel is in contact with the workpiece.
- ✗ DO NOT carry the by the hose, or yank the hose from the air supply.
- ✗ DO NOT hold the workpiece by hand. Use clamps or a vice (not included) to secure the workpiece. Available from your Sealey dealer.
- ✗ DO NOT allow untrained persons to operate the hammer.
- ✗ DO NOT operate the hammer when you are tired or under the influence of alcohol, drugs or intoxicating medication.
- ✗ DO NOT use hammer where there is flammable liquid, solid or gas such as paint solvent, including waste wiping or cleaning rags etc.
- ✗ DO NOT leave the hammer operating unattended.
- ✗ DO NOT carry the hammer with your finger on the trigger.
- ✗ DO NOT direct air from the air hose at yourself or others.
- ✓ When work is complete ensure that the air supply is turned off.
- ✓ When not in use disconnect from the air supply and store in a safe, dry, childproof area.

### 2. AIR SUPPLY

The recommended set-up is shown in fig. 1.

- 2.1. Ensure the trigger is in the "off" position before connecting to the air supply.
- 2.2. You will require an air pressure of 90psi and an available air flow of 4cfm to operate the unit.
- 2.3.  **WARNING!** Ensure the air supply does not exceed 90 psi while operating the hammer. Too high an air pressure and/or unclean air will shorten the product life due to excessive wear and may be dangerous, causing damage and/or personal injury.
- 2.4. Drain the air tank daily. Water in the air line will damage the hammer.
- 2.5. Clean the air inlet filter screen weekly.
- 2.6. Line pressure should be increased to compensate for unusually long air hoses (over 8 metres). The minimum hose diameter should be 10mm I.D. and fittings must have the same inside dimensions.
- 2.7. Keep hose away from heat, oil and sharp edges. Check hoses for wear, and make certain that all connections are secure.
- 2.8. **Couplings.** Vibration may cause failure if a quick change coupling is connected directly to the hammer. To overcome this, connect a leader hose to the hammer. A quick change coupling may then be used to connect the leader hose to the air line recoil hose. See fig 1 & 2.



### 3. INTRODUCTION & SPECIFICATION

GS/TUV approved quality long stroke air hammer supplied in carry case. Kit also includes spare retainer spring, long blade panel cutter, special panel cutter, panel cutter, muffler tail pipe remover, cold chisel, air hose connector and air tool lubricating oil.

#### SPECIFICATION

Chisel Shank . . . . . 0.401" Parker Taper  
Speed . . . . . 4500bpm  
Stroke . . . . . 32mm

Operating Pressure . . . . . 90psi  
Air Consumption . . . . . 4cfm  
Air Inlet . . . . . 1/4" BSP

Weight . . . . . 1.2kg  
Noise Level . . . . . 98.7dB  
Vibration . . . . . 25.3m/s2

### Risk of Hand Arm Vibration Injury.

The SA12/S.V2 Medium Stroke Air Hammer, when operated in accordance with these instructions and tested in accordance with EN 28662-2: 1994 results in the following vibration emission declared in accordance with BS EN12096: 1996.  
 Measured vibration emission value: . . . . . 25.3m/s<sup>2</sup>                      Uncertainty: . . . . . 10.12m/s<sup>2</sup>

**These values are suitable for comparison with emission levels of other tools that have been subject to the same test.**

**This tool may cause hand-arm vibration syndrome if its use is inadequately managed.**

**Recommended Measures to reduce risk of hand-arm vibration syndrome:**

This tool should not be used by an individual regularly for more than 117 minutes in any 8 hour period.

This duration of use should be reduced if the individual is exposed to hand-arm vibration from other sources.

## 4. OPERATING INSTRUCTIONS

**Note: Numbers in brackets refer to item numbers in the parts list.**

The air hammer is designed primarily for use on vehicle bodywork. We do not recommend any other use. Ensure you read, understand and follow the safety instructions in Section 1.

- 4.1. Attach the retaining spring (17) by screwing it onto the cylinder (16).
- 4.2. Insert the chisel using the hooked end of the spring to hold the chisel in place.
- 4.3. Attached the tool to the air supply (see Section 2).
- 4.4. To operate the hammer, squeeze the trigger (6). The air regulator (5) may be used as a means of throttle control.

## 5. MAINTENANCE

**WARNING!** Disconnect the hammer from the air supply before changing chisels, servicing or performing any maintenance.

- 5.1. **Keep the hammer oiled for optimum performance.** Lubricate with a good grade of air tool oil such as Sealey ATO/500 or ATO/1000. If there is no oiler in the air system then a teaspoon of oil can be poured into the air inlet of the hammer, or into the hose at the nearest connection to the air supply. Then run the hammer for a short time.

**Note:** The following external factors may cause loss of power and effect hammer performance:

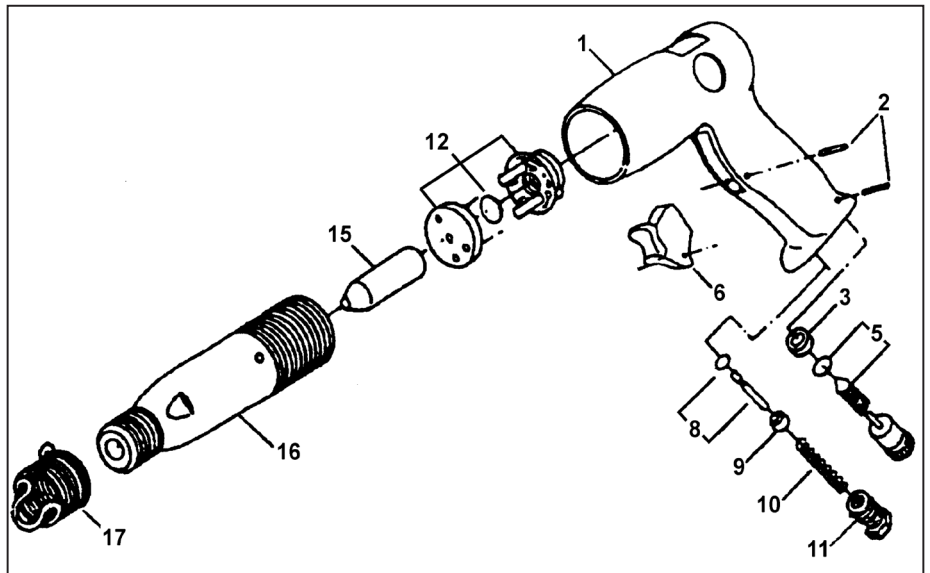
**The air supply.** Reduced compressor output, excessive drain on the air line, moisture or restrictions in air pipes or the use of hose connectors having too small a bore. Correct as necessary.

**The hammer.** Grit or gum deposits in the tool. Correct by cleaning the air strainer and flushing out the tool with gum solvent oil or an equal mixture of SAE No.10 oil and kerosene. If, despite taking action as above, the tool function is still impaired, contact your local Sealey service agent.

## 6. SPARE PARTS

Item	Part No.	Description
1	SA12R/01	Handle
2	SA12R/02	Pin
3	SA12R/03	Ball Seat
5	SA12R/05	Air Regulator & O-ring
6	SA12R/06	Trigger
8	SA12R/08	Pin & O-ring
9	SA12R/09	Pin Seat
10	SA12R/10	Throttle Spring
11	SA12R/11	Hose Adaptor
12	SA12R/VA	Valve Assembly
15	SA12R/15	Piston
16	SA12R/16	Cylinder
17	SA11R/17	Spring Retainer
18	SA12S.C	5pc Chisel Kit (Not Shown)

Issue No: 1  
 Date Issued: 260804



**NOTE:** It is our policy to continually improve products and as such we reserve the right to alter data, specifications and component parts without prior notice.

**IMPORTANT:** No liability is accepted for incorrect use of this product.

**WARRANTY:** Guarantee is 12 months from purchase date, proof of which will be required for any claim.

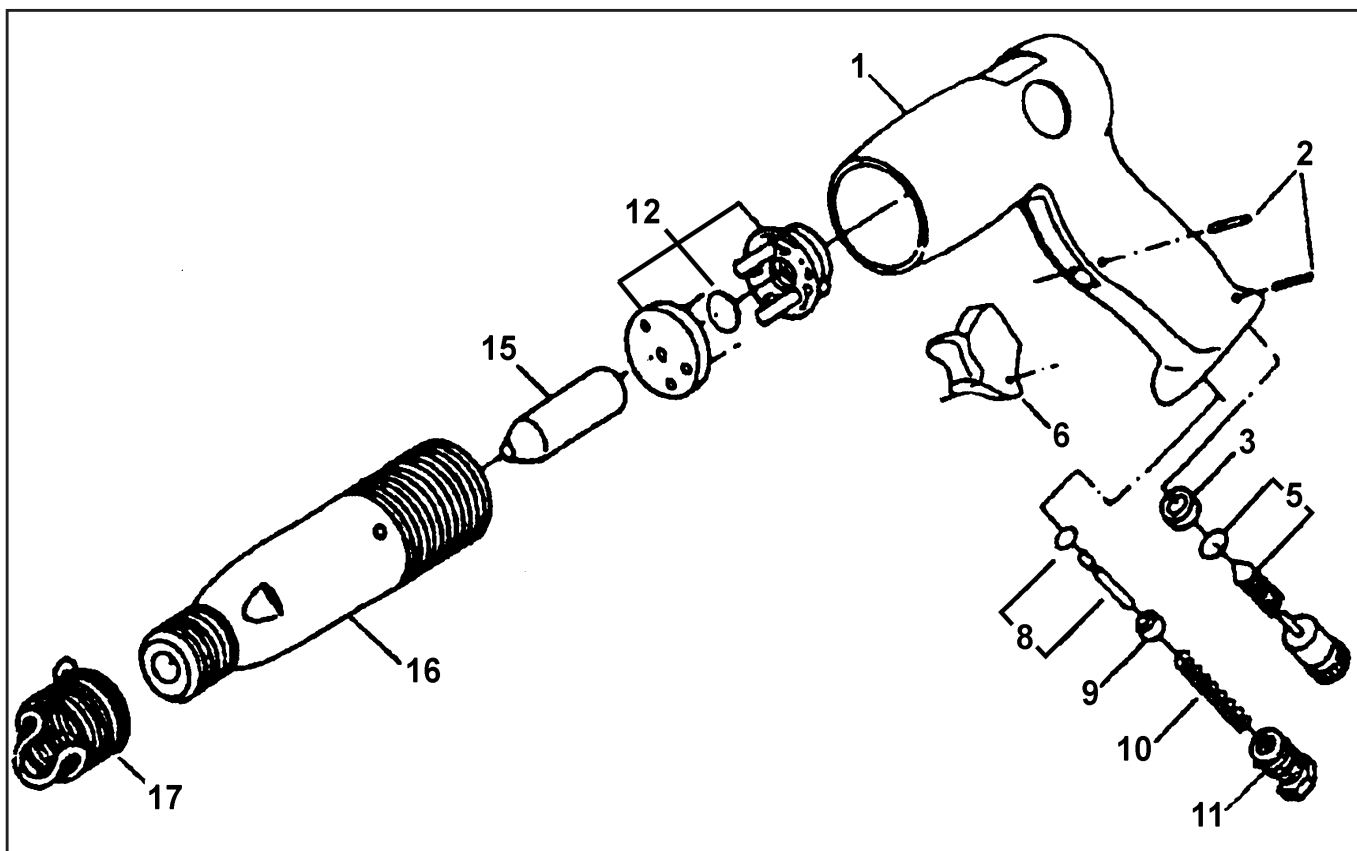
**INFORMATION:** For a copy of our latest catalogue and promotions call us on 01284 757525 and leave your full name and address, including postcode.



Sole UK Distributor, Sealey Group,  
 Kempson Way, Suffolk Business Park,  
 Bury St. Edmunds, Suffolk,  
 IP32 7AR

01284 757500  
 01284 703534

www.sealey.co.uk  
 sales@sealey.co.uk



Item	Part No.	Description
1	SA12R/01	Handle
2	SA12R/02	Pin
3	SA12R/03	Ball Seat
5	SA12R/05	Air Regulator & O-ring
6	SA12R/06	Trigger
8	SA12R/08	Pin & O-ring
9	SA12R/09	Pin Seat
10	SA12R/10	Throttle Spring
11	SA12R/11	Hose Adaptor
12	SA12R/VA	Valve Assembly
15	SA12R/15	Piston
16	SA12R/16	Cylinder
17	SA11R/17	Spring Retainer
18	SA12S.C	5pc Chisel Kit (Not Shown)

Issue No: 1  
 Date Issued: 260804