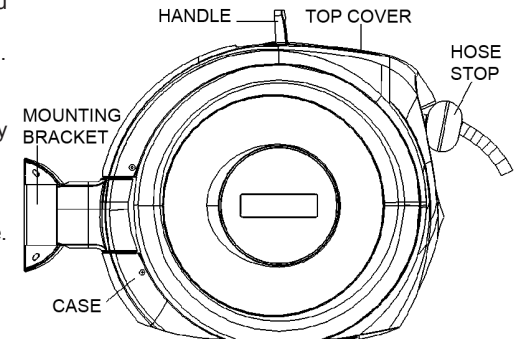


Thank you for purchasing a Sealey Product. Manufactured to a high standard this product will, if used according to these instructions and properly maintained, give you years of trouble free performance.

IMPORTANT: PLEASE READ THESE INSTRUCTIONS CAREFULLY. NOTE THE SAFE OPERATIONAL REQUIREMENTS, WARNINGS AND CAUTIONS. USE THIS PRODUCT CORRECTLY AND WITH CARE FOR THE PURPOSE FOR WHICH IT IS INTENDED. FAILURE TO DO SO MAY CAUSE DAMAGE AND/OR PERSONAL INJURY AND WILL INVALIDATE THE WARRANTY. PLEASE KEEP INSTRUCTIONS SAFE FOR FUTURE USE.

1. SAFETY INSTRUCTIONS

- WARNING!** Disconnect the hose reel from the water supply before changing accessories, servicing or performing any maintenance.
- ✓ Maintain the hose reel in good condition.
- ✗ **DO NOT** operate the hose reel if any parts are damaged or missing as this may cause failure and/or personal injury.
- ✓ Have damaged parts replaced or repaired by an authorised service agent. Use recommended parts only. Unauthorised parts may be dangerous and will invalidate the warranty.
- ✓ Locate and fix the hose reel in a suitable working area. Do not position the hose in direct sunlight, or in areas of extreme heat or cold.
- WARNING!** Ensure maximum pressure is not exceeded.
- ✓ Keep extended hose away from heat and sharp edges. Check hose for wear before each use, and ensure all connections are secure.
- ✓ Keep children and unauthorised persons away from the hose reel especially when the hose is retracting.
- ✗ **DO NOT** use the hose reel for any purpose other than that for which it is designed.
- ✗ **DO NOT** operate the hose reel when you are tired or under the influence of alcohol, drugs or intoxicating medication.
- ✗ **DO NOT** direct water from the water hose at yourself or others.
- ✓ When not in use ensure the water supply is turned off and tools disconnected. Disconnect from the water supply and retract the hose into case.
- ✗ **DO NOT** allow water to freeze in the hose.
- ✗ **DO NOT** let go of the hose whilst it is retracting.
- ✗ **DO NOT** retract the hose if the water supply is still on.

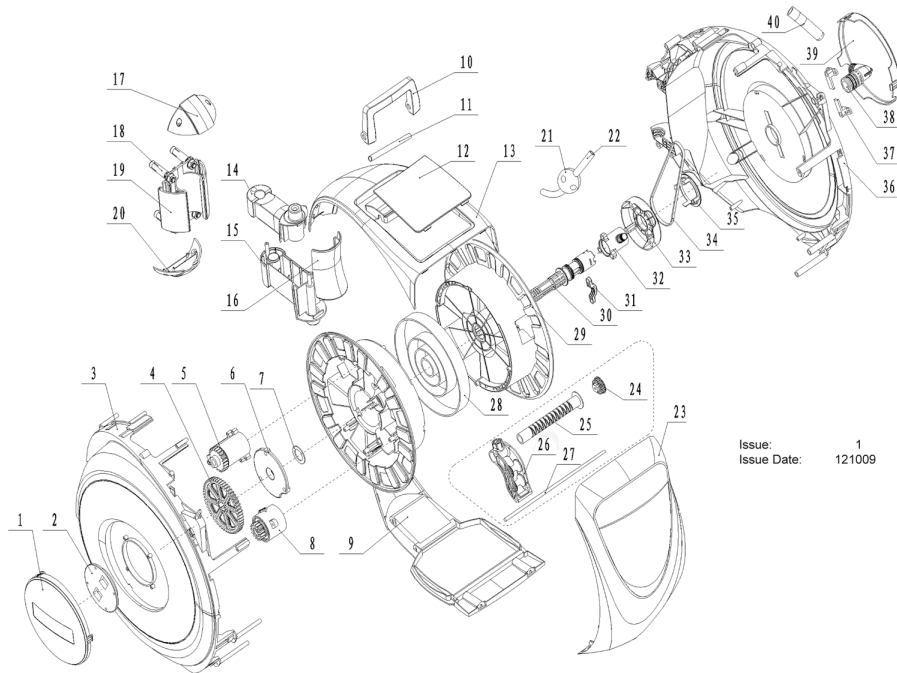


2. INTRODUCTION & SPECIFICATION

Heavy-duty composite housing with wall mounting aluminium alloy swivel bracket. Fitted with 30mtr Ø13mm PVC garden hose with spray/jet nozzle. Innovative design features three key points. Hose can be extended and stopped at any length. Controlled, slow rewind which, unlike traditional retractable reels, returns the water hose at a safe speed. Auto layering mechanism distributes water hose evenly back into reel housing preventing it from jamming. Supplied with 2mtr leader hose with quick coupler and tap connector.

Hose Length30mtr

Size:Ø13mm



Issue: 1
 Issue Date: 121009

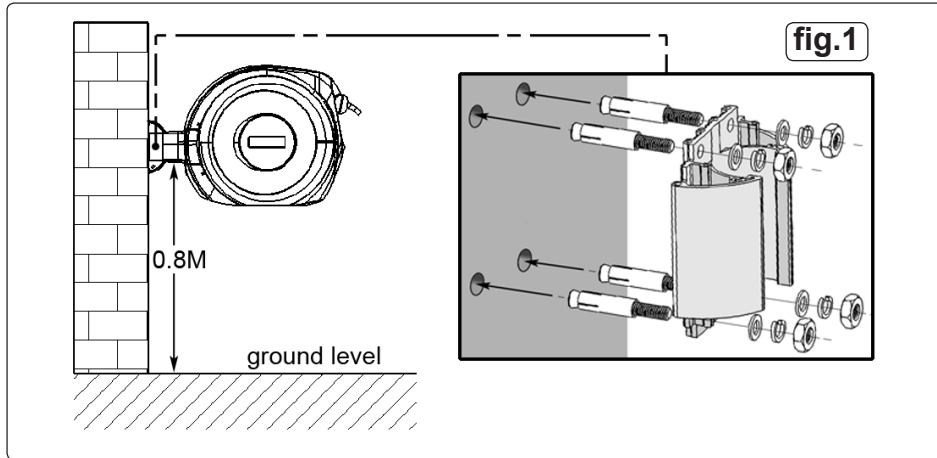
ITEM	PART NO	DESCRIPTION	ITEM	PART NO	DESCRIPTION
1	RWH15.V3-01	SIDE COVER (LEFT)	21	RWH15.V3-21	STOP BALL
2	RWH15.V3-02	TENSION COVER	22	RWH15.V3-22	WATER HOSE
3	RWH15.V3-03	LEFT SIDE CASING	23	RWH15.V3-23	FRONT COVER
4	RWH15.V3-04	GEAR	24	RWH15.V3-24	GEAR WHEEL
5	RWH15.V3-05	RETRACTING ASS'Y	25	RWH15.V3-25	SCREW
6	RWH15.V3-06	SUPPORT COVER	26	RWH15.V3-26	MOUNTING RACK ASS'Y
7	RWH15.V3-07	GASKET	27	RWH15.V3-27	SHAFT FOR RACKING ASS'Y
8	RWH15.V3-08	LOCKABLE DEVICE	28	RWH15.V3-28	MAIN SPRING
9	RWH15.V3-09	BOTTOM CASING	29	RWH15.V3-29	DRUM
10	RWH15.V3-10	HANDLE	30	RWH15.V3-30	MAIN SHAFT
11	RWH15.V3-11	HANDLE SHAFT	31	RWH15.V3-31	CLAMP
12	RWH15.V3-12	TOP COVER	32	RWH15.V3-32	OUTLET CONNECTOR
13	RWH15.V3-13	TOP CASING	33	RWH15.V3-33	WHEEL CAP
14	RWH15.V3-14	UPPER SWIVEL COVER	34	RWH15.V3-34	BELT
15	RWH15.V3-15	LOWER SWIVEL COVER	35	RWH15.V3-35	FIXED GUARD
16	RWH15.V3-16	COVER FOR SWIVEL	36	RWH15.V3-36	RIGHT SIDE CASING
17	RWH15.V3-17	WALL BRACKET COVER (TOP)	37	RWH15.V3-37	SHAFT STATOR
18	RWH15.V3-18	BOLT	38	RWH15.V3-38	INLET CONNECTOR
19	RWH15.V3-19	WALL BRACKET	39	RWH15.V3-39	RIGHT COVER
20	RWH15.V3-20	BRACKET COVER (BOTTOM)	40	RWH15.V3-40	INLET HOSE

NOTE: It is our policy to continually improve products and as such we reserve the right to alter data, specifications and component parts without prior notice. **IMPORTANT:** No liability is accepted for incorrect use of this product. **WARRANTY:** Guarantee is 12 months from purchase date, proof of which will be required for any claim. **INFORMATION:** For a copy of our catalogue and latest promotions call us on 01284 757525 and leave your full name, address and postcode.



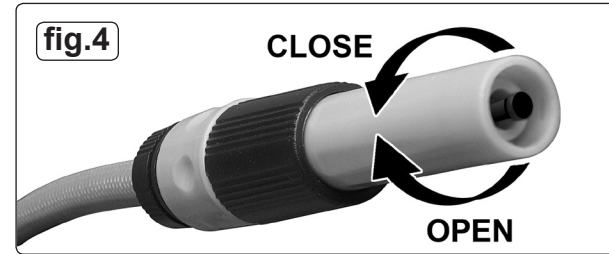
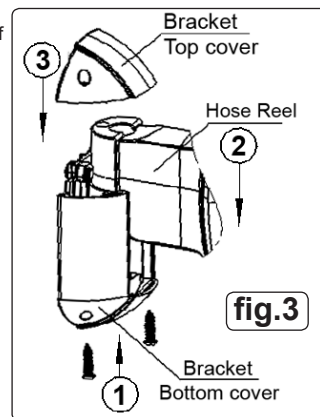
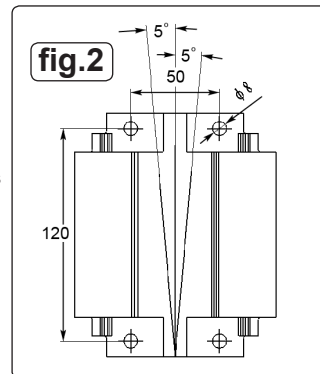
Sole UK Distributor,
 Sealey Group, Kempson Way,
 Suffolk Business Park,
 Bury St Edmunds, Suffolk, IP32 7AR
 01284 757500
 01284 703534
www.sealey.co.uk
sales@sealey.co.uk

3. MOUNTING/ASSEMBLY



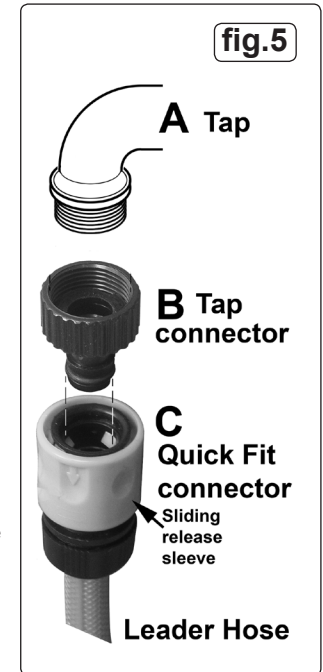
WARNING! Do not position the hose reel in direct sunlight or in areas of extreme heat or cold.

- 3.1 MOUNTING THE HOSE REEL.** The hose reel should be mounted close enough to an external water tap to prevent the 2mtr lead hose from being unduly stretched when the reel is moved from side to side. The mounting bracket can be fixed to a masonry surface or screwed to a convenient wooden structure capable of supporting the reel.
- 3.2** The reel is designed to swivel through 180° and therefore requires clearance either side of the mounting bracket. Ideally the reel should be positioned so that the majority of the hose can be pulled out straight without having to go round a corner. Where this is unavoidable mount the reel 1.5m from the corner and ensure that the hose is not abraded by any rough or sharp surfaces.
- 3.3** Remove the top cover from the bracket (see fig.3-3) and allow the bracket to slide down and off the hose reel mount. Remove the two screws from the bottom cover and remove this from the bracket too (see fig.3-1). If mounting on masonry, drill four 12mm holes in the wall ready to receive the four anchor bolts provided. Use the bracket dimensions shown in fig.2 or use the bracket itself as a template.
- 3.4** Insert the four anchor bolts into the holes. Mount the bracket onto the protruding studs and loosely secure it with the flat washers, spring washers and nuts. See fig.1. Tighten evenly until the bracket is secure. The bracket must not deviate from the vertical by more than 5°.
- 3.5** Refit the bracket bottom cover and secure it with the two screws as shown as shown in fig.3-1. Slide the hose reel mounting down into the bracket (see fig.3-2) and refit the bracket top cover (see fig.3-3). Rotate the reel from side to side to ensure that the mounting position is satisfactory.
- 3.6** Release the tap connector from the end of the leader hose by pulling the green sleeve back (see fig.5C) and pulling out the connector (see fig.5B). Screw the connector to the tap.
- 3.7** Push the leader hose onto the tap connector. **Extend the hose before turning on the tap.** If there are any leaks tighten the appropriate fixings.



4. OPERATION

- 4.1 EXTENDING THE HOSE**
Steadily pull the hose out to the desired length. When you stop pulling, the hose should automatically lock. If not, give it a short pull to activate the mechanism.
- 4.2 RETRACTING THE HOSE**
Before retracting the hose turn the water off and leave the spray nozzle open in order to release any pressure in the hose line. To retract the hose give it a short pull to disengage the automatic lock after which the hose will retract. To ensure satisfactory retraction and stowage of the hose it is recommended that at least 25% of the hose should be extended. Keep hold of the end of the hose, without exerting undue tension, so that it is drawn back into the reel in a controlled manner. In the event of the hose retracting unsatisfactorily pull out the entire hose and start again. When the warning mark appears (one metre from end), stop pulling.
- WARNING!** Whilst the hose reel has a controlled retraction mechanism it is still recommended that the user holds the end of the hose during this process to avoid injury to others or damage to property.
- 4.3 ADJUSTING THE SPRAY**
4.3.1 To shut off the spray nozzle keep turning it anticlockwise as shown in fig.4. To turn it on and adjust the spray turn it clockwise. As the nozzle first opens up the spray pattern will be fine. As the nozzle is opened further the spray pattern will be coarse and if the nozzle is further opened the spray will turn to a jet.



5. MAINTENANCE & STORAGE

- WARNING!** In the event of the reel becoming faulty it should be returned to your Sealey dealer for professional maintenance. The user should not attempt any maintenance due to the high tension spring mechanism inside. To ensure reliable operation, clean the hose and casing regularly. **DO NOT** spray or wet the product, but clean with a cloth and warm water. **DO NOT** use solvents or detergents, as these may permanently damage the item.
- WINTER STORAGE:** Before the onset of cold weather all water should be drained from the hose to prevent it freezing inside the reel. Also in colder weather the plastic hose will become more rigid and may not auto-rewind correctly. For these reasons it is best to store the hose reel inside during periods of extreme cold. To store the hose reel, ensure it is clean and dry. Place the reel in a safe, dry, childproof location, where the temperature will remain reasonably stable. **DO NOT** store in a nylon, or plastic, bag as this will encourage condensation.

NOTE: It is our policy to continually improve products and as such we reserve the right to alter data, specifications and component parts without prior notice. **IMPORTANT:** No liability is accepted for incorrect use of this product. **WARRANTY:** Guarantee is 12 months from purchase date, proof of which will be required for any claim. **INFORMATION:** For a copy of our catalogue and latest promotions call us on 01284 757525 and leave your full name, address and postcode.

	Sole UK Distributor, Sealey Group, Kempson Way, Suffolk Business Park, Bury St Edmunds, Suffolk, IP32 7AR	01284 757500 01284 703534	www.sealey.co.uk sales@sealey.co.uk	
	Original Language Version			