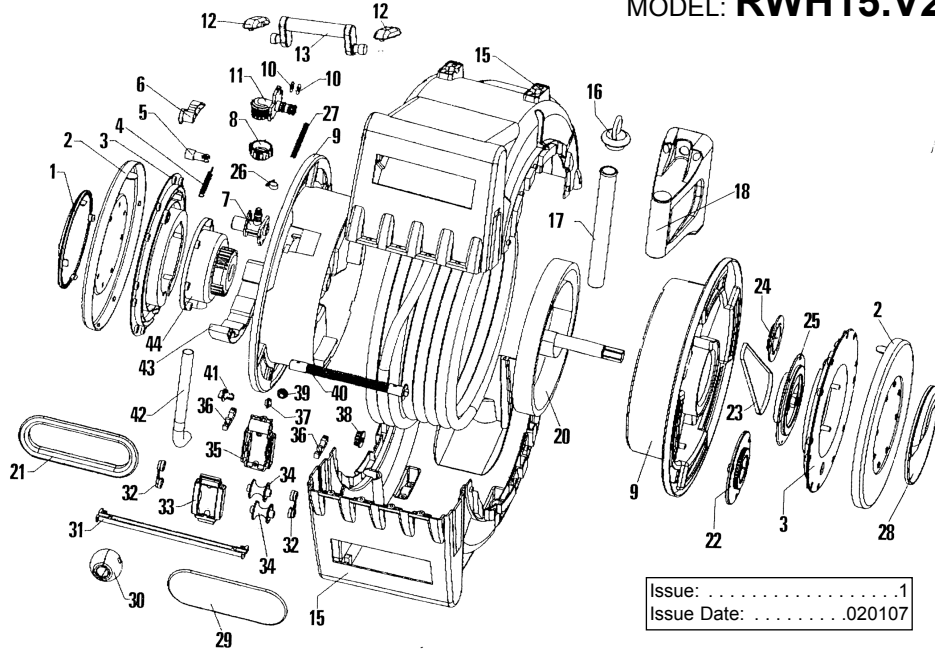


Thank you for purchasing a Sealey Product. Manufactured to a high standard this product will, if used according to these instructions and properly maintained, give you years of trouble free performance.

**IMPORTANT: PLEASE READ THESE INSTRUCTIONS CAREFULLY. NOTE THE SAFE OPERATIONAL REQUIREMENTS, WARNINGS AND CAUTIONS. USE THIS PRODUCT CORRECTLY AND WITH CARE FOR THE PURPOSE FOR WHICH IT IS INTENDED. FAILURE TO DO SO MAY CAUSE DAMAGE AND/OR PERSONAL INJURY AND WILL INVALIDATE THE WARRANTY. PLEASE KEEP INSTRUCTIONS SAFE FOR FUTURE USE.**



Issue: .....1  
 Issue Date: .....020107

ITEM	PART NO.	DESCRIPTION	ITEM	PART NO.	DESCRIPTION
1	RWH15.V2-01	RIGHT DECORATED CASING	23	RWH15.V2-23	DRIVING BELT
2	RWH15.V2-02	OUTER FLANK CAP	24	RWH15.V2-24	GEAR PLATE BELT
3	RWH15.V2-03	INNER FLANK CAP	25	RWH15.V2-25	REGULATION CAP
4	RWH15.V2-04	PULL SPRING	26	RWH15.V2-26	HOSE COLLAR LATCH
5	RWH15.V2-05	JAW TURN SHAFT	27	RWH15.V2-27	SPRING
6	RWH15.V2-06	VINE CLAW	28	RWH15.V2-28	LEFT DECK CAP
7	RWH15.V2-07	WIRE-CORE CONNECTOR	29	RWH15.V2-29	SEAL CAP
8	RWH15.V2-08	LOCKNUT	30	RWH15.V2-30	LOCATING BALL
9	RWH15.V2-09	WIRE-CORE	31	RWH15.V2-31	GUIDE TRACK
10	RWH15.V2-10	SEALING GASKET	32	RWH15.V2-32	ROTATION WHEEL
11	RWH15.V2-11	HOSE CONNECTOR	33	RWH15.V2-33	DRAINER CAP
12	RWH15.V2-12	HANDLE SEAT	34	RWH15.V2-34	ROTATION WHEEL
13	RWH15.V2-13	HANDLE	35	RWH15.V2-35	DRAINER CAP
14	RWH15.V2-14	OUTER SHIELD	36	RWH15.V2-36	SCREW COMPRESS COVER
15	RWH15.V2-15	OUTER CASING	37	RWH15.V2-37	TRANSFER BLOCK
16	RWH15.V2-16	PULL RING	38	RWH15.V2-38	PINION
17	RWH15.V2-17	ALUMINIUM TUBE	39	RWH15.V2-39	COVER
18	RWH15.V2-18	SUPPORT SEAT	40	RWH15.V2-40	DUPLEX SCREW
19	RWH15.V2-19	WATER HOSE	41	RWH15.V2-41	CAP
20	RWH15.V2-20	COILED SPRING	42	RWH15.V2-42	WATER HOSE
21	RWH15.V2-21	SEAL HOSE	43	RWH15.V2-43	WHEEL
22	RWH15.V2-22	GEAR PLATE	44	RWH15.V2-44	HOSE WHEEL CAP

## 1. SAFETY INSTRUCTIONS

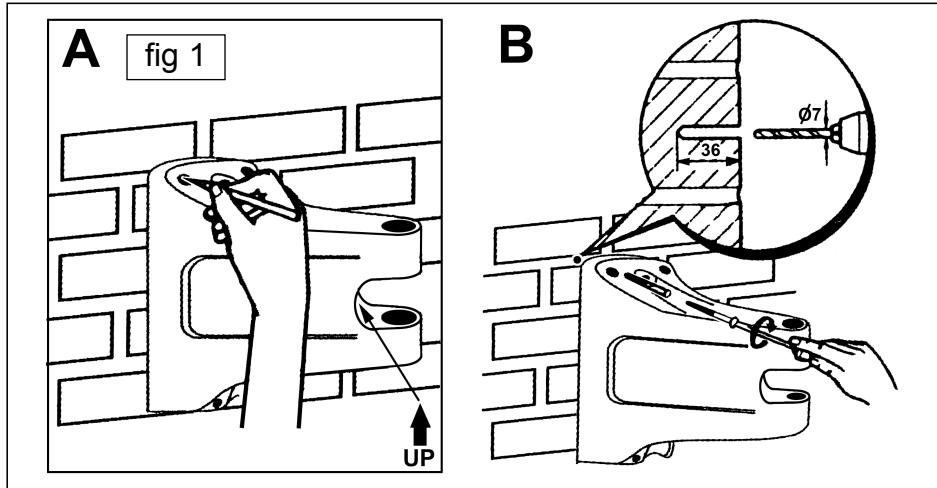
- WARNING!** Disconnect the hose reel from the water supply before changing accessories, servicing or performing any maintenance.
- ✓ Maintain the hose reel in good condition.
- ✗ **DO NOT** operate the hose reel if any parts are damaged or missing as this may cause failure and/or personal injury.
- ✓ Have damaged parts replaced or repaired by an authorised service agent. *Use recommended parts only. Unauthorised parts may be dangerous and will invalidate the warranty.*
- ✓ Locate and fix the hose reel in a suitable working area. Do not position the hose in direct sunlight, or in areas of extreme heat or cold.
- WARNING!** Ensure maximum pressure is not exceeded.
- ✓ Keep extended hose away from heat and sharp edges. Check hose for wear before each use, and ensure all connections are secure.
- ✓ Keep children and unauthorised persons away from the hose reel especially when the hose is retracting.
- ✗ **DO NOT** use the hose reel for any purpose other than that for which it is designed.
- ✗ **DO NOT** operate the hose reel when you are tired or under the influence of alcohol, drugs or intoxicating medication.
- ✗ **DO NOT** direct water from the water hose at yourself or others.
- ✓ When not in use ensure the water supply is turned off and tools disconnected. Disconnect from the water supply and retract the hose into case.
- ✗ **DO NOT** allow water to freeze in the hose
- ✗ **DO NOT** let go of the hose whilst it is retracting.
- ✗ **DO NOT** retract the hose if the water supply is still on.

## 2. INTRODUCTION & SPECIFICATION

Durable UV resistant composite case with wall/ceiling mounted bracket. Built-in self lubricating belt for smooth rewind. Fitted with 20mtr Ø12mm PVC garden hose with spray/jet nozzle. Supplied with 2.0mtr leader hose with quick coupler and tap connector. Positive latching mechanism automatically locks hose at desired length.

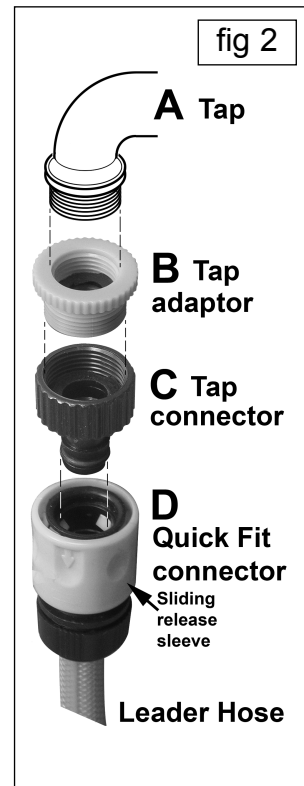
Hose Length: .....20mtr Size: .....Ø12mm

### 3. MOUNTING/ASSEMBLY



**WARNING!** Do not position the hose reel in direct sunlight or in areas of extreme heat or cold.

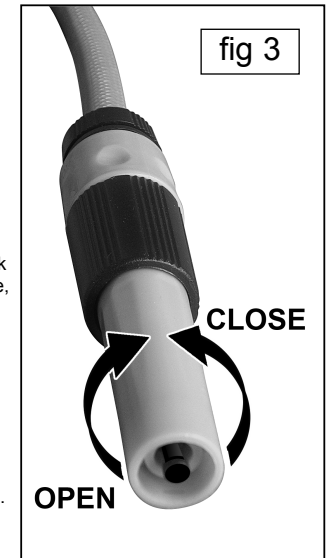
- 3.1 MOUNTING THE HOSE REEL. The hose reel should be mounted close enough to an external water tap to prevent the 2mtr lead hose from being unduly stretched. The mounting bracket can be fixed to a masonry surface or screwed to a convenient solid wooden structure if available.
- 3.2 The reel is designed to swivel through 180° and requires a clearance of 50cm either side of the mounting bracket. Ideally the reel should be positioned so that the majority of the hose can be pulled out straight without having to go round a corner. Where this is unavoidable mount the reel 1.5m from the corner and ensure that the hose is not abraded by any rough or sharp surfaces.
- 3.3 After selecting a suitable location, place the bracket on the wall as shown in fig.1A. Ensure that the bracket is the right way up by referring to the symbol moulded into the bracket in the position indicated in fig.1A. Check that the bracket is vertical then mark the positions of the four fixings through the fixing holes.
- 3.4 If mounting on masonry use the two central mounting positions together with the wallplugs provided. Drill the wall with a 7mmØ masonry bit to a depth of no more than 36mm. Insert the wallplugs, place the bracket into position and screw into place. When mounting on wood use the four corner positions and the four screws provided.
- 3.5 Remove the tubular aluminium hinge pin from its position at the rear of the reel. Slide the reel onto the mounting bracket and align the rear mounting holes on the reel with the mounting holes in the bracket and fully insert the hinge pin. Rotate the reel from side to side to ensure that the mounting position is satisfactory.
- 3.6 Release the tap connector from the end of the leader hose by pulling the green sleeve back and pulling out the connector (see fig.2C). The connector has an inner green adaptor which allows it to fit to two sizes of tap. (See fig.2B). Screw the connector to the tap using the green adaptor if required.
- 3.7 Push the leader hose onto the tap connector and turn on the tap. If there are any leaks tighten the appropriate fixings.



RWH15.V2 - 1 - 101006

### 4. OPERATION

- 4.1 **EXTENDING THE HOSE**  
As you pull the hose out to the desired length you will hear the automatic locking mechanism inside the reel making a series of clicking noises. If you release the hose immediately after the last series of clicks it will automatically lock. If the hose starts to retract pull it out further until you hear the clicks.
- 4.2 **RETRACTING THE HOSE**  
Before retracting the hose turn the water off and leave the spray nozzle open in order to release any pressure in the hose line. To retract the hose pull it out slightly to disengage the automatic lock after which the hose will retract. Keep hold of the end of the hose, without exerting undue tension, so that it is drawn back into the reel in a controlled manner. In the event of the hose retracting unsatisfactorily pull out the entire hose and start again.
- 4.3 **ADJUSTING THE SPRAY**  
4.3.1 To shut off the spray nozzle keep turning it anticlockwise as shown in fig.3. To turn it on and adjust the spray turn it clockwise. As the nozzle first opens up the spray pattern will be fine. As the nozzle is opened further the spray pattern will be coarse and if the nozzle is further opened the spray will turn to a jet.



### 5. MAINTENANCE & STORAGE

- WARNING!** In the event of the reel becoming faulty it should be returned to your Sealey dealer for professional maintenance. The user should not attempt any maintenance due to the high tension spring mechanism inside. To ensure reliable operation, clean the hose and casing regularly. **DO NOT** spray or wet the product, but clean with a cloth and warm water. **DO NOT** use solvents or detergents, as these may permanently damage the item.
- WINTER STORAGE:** Before the onset of cold weather all water should be drained from the hose to prevent it freezing inside the reel. Also in colder weather the plastic hose will become more rigid and may not auto-rewind correctly. For these reasons it is best to store the hose reel inside during periods of extreme cold. To store the hose reel, ensure it is clean and dry. Place the reel in a safe, dry, childproof location, where the temperature will remain reasonably stable. **DO NOT** store in a nylon, or plastic, bag as this will encourage condensation.

**NOTE:** It is our policy to continually improve products and as such we reserve the right to alter data, specifications and component parts without prior notice. **IMPORTANT:** No liability is accepted for incorrect use of this equipment. **WARRANTY:** Guarantee is 12 months from purchase date, proof of which will be required for any claim. **INFORMATION:** For a copy of our latest catalogue and promotions call us on 01284 757525 and leave your full name and address, including postcode.

**SEALEY POWER PRODUCTS**

Sole UK Distributor, Sealey Group, Bury St. Edmunds, Suffolk.

01284 757500

01284 703534

E-mail: sales@sealey.co.uk  
Web: www.sealey.co.uk

RWH15.V2 - 1 - 101006