



# 12V JUMP STARTER POWER PACK 4000A

MODEL NO: **RS4000**

Thank you for purchasing a Sealey product. Manufactured to a high standard, this product will, if used according to these instructions, and properly maintained, give you years of trouble free performance.

**IMPORTANT:** PLEASE READ THESE INSTRUCTIONS CAREFULLY. NOTE THE SAFE OPERATIONAL REQUIREMENTS, WARNINGS & CAUTIONS. USE THE PRODUCT CORRECTLY AND WITH CARE FOR THE PURPOSE FOR WHICH IT IS INTENDED. FAILURE TO DO SO MAY CAUSE DAMAGE AND/OR PERSONAL INJURY AND WILL INVALIDATE THE WARRANTY. KEEP THESE INSTRUCTIONS SAFE FOR FUTURE USE.



Refer to  
instructions

## 1. SAFETY

### 1.1. GENERAL SAFETY

Modern vehicles contain extensive electronic systems. You are required to check with the vehicle manufacturer for any specific instructions regarding the use of this type of equipment on each vehicle. No liability will be accepted for damage / injury, where this product is not used in accordance with all instructions.

- ☐ **WARNING!** This product is intended for use with 12V lead acid/AGM/Gel batteries/vehicles only.
- ☐ **WARNING!** When the engine is not connected to the battery, the jumper cable does not support reverse connection protection. If you disconnect the power cord from the vehicle battery, **DO NOT** reconnect it in reverse when starting the vehicle.
- ✓ Please adhere to local traffic safety rules and regulations when using this product on the road.
- ✓ Ensure that the vehicle is in a well ventilated area and turned off.
- ✓ Apply the handbrake and select neutral or 'park' before attempting to start.
- ✓ Ensure that the ignition switch and all ancillary electrical equipment is switched off.
- ✓ Keep clear of any pulleys, belts etc. that will move once the engine starts.
- ✓ Take care to ensure correct connection polarity; RED clamp to positive, BLACK clamp to negative.
- ✓ Store the unit in a dry, childproof location, away from dampness or corrosive substances.
- ✓ Recharge the unit every 3 months to prevent over-discharge.
- ✓ Ensure the unit is fully charged (100%) before initial use.
- ✓ Allow a minimum of 30 minutes after starting the vehicle before charging the product.
- ✓ Always use the standard jumper cable provided with the product to start the vehicle.
- ✓ Keep the jumper cable away from heat sources and fire.
- ✓ Ensure correct connection of the jumper cable according to the manual's requirements.
- ✓ Please untangle the coiled/tied-up cable before use.
- \* **DO NOT** allow the unit to become wet.
- \* **DO NOT** touch the unit with wet hands.
- \* **DO NOT** use in explosive atmospheres (e.g. the presence of flammable liquids, gases or dust).
- \* **DO NOT** use the unit if it appears damaged in any way.
- \* **DO NOT** short-circuit the unit by connecting the RED and BLACK clamps.
- \* **DO NOT** disassemble or modify the unit.
- \* **DO NOT** use if expansion, leakage, or unusual odours are detected. Keep away from the unit.
- \* **DO NOT** operate outside of normal temperature ranges, or in areas of moisture, heat or flames.
- \* **DO NOT** attempt to jump-start an engine in quick succession due to risk of overheating (3 times with 60s intervals is the limit).
- \* **DO NOT** use when the unit battery falls below 10% to prevent damage.
- \* **DO NOT** submerge the jumper cable in water or attempt to disassemble or modify it without authorisation.
- \* **DO NOT** scrape the product with sharp objects or contaminate the ports with dust. Regularly clean the ports.
- \* **DO NOT** leave the product or your vehicle unattended while the product is in use.
- \* **DO NOT** use the product to jump-start your vehicle if its battery is damaged or over-discharged.
- \* **DO NOT** leave the jump cable connected to the vehicle battery when storing.
- \* **DO NOT** leave the unit in direct sunlight or expose to heat.
- \* **DO NOT** use abrasive or solvent cleaners on this product.
- \* **DO NOT** allow children or pets to play with this product. Keep children and pets away.
- \* **DO NOT** allow the positive and negative clamps to touch.
- \* **DO NOT** connect both cable clamps to the same piece of metal.
- \* **DO NOT** abuse the product. Handle with care.

### 1.2. BATTERY SAFETY

- ☐ **WARNING!** To reduce the risk of burns or fire:
- \* **DO NOT** attempt to open, disassemble, modify or service the battery pack.
- \* **DO NOT** crush, puncture, short external contacts or dispose of in fire or water.
- \* **DO NOT** expose to temperatures above 60°C (140°).
- \* **DO NOT** use the product to start a bulging car battery.
- ✓ Replace only with the battery pack designated for this product.
- ✓ Recycle or dispose of used battery as stipulated by local regulation.
- ✓ If the electrolyte in the cells gets on your skin, thoroughly wash with soap and water.
- ✓ If the electrolyte gets in your eyes, rinse thoroughly with cool water and seek immediate medical attention.

## 2. INTRODUCTION

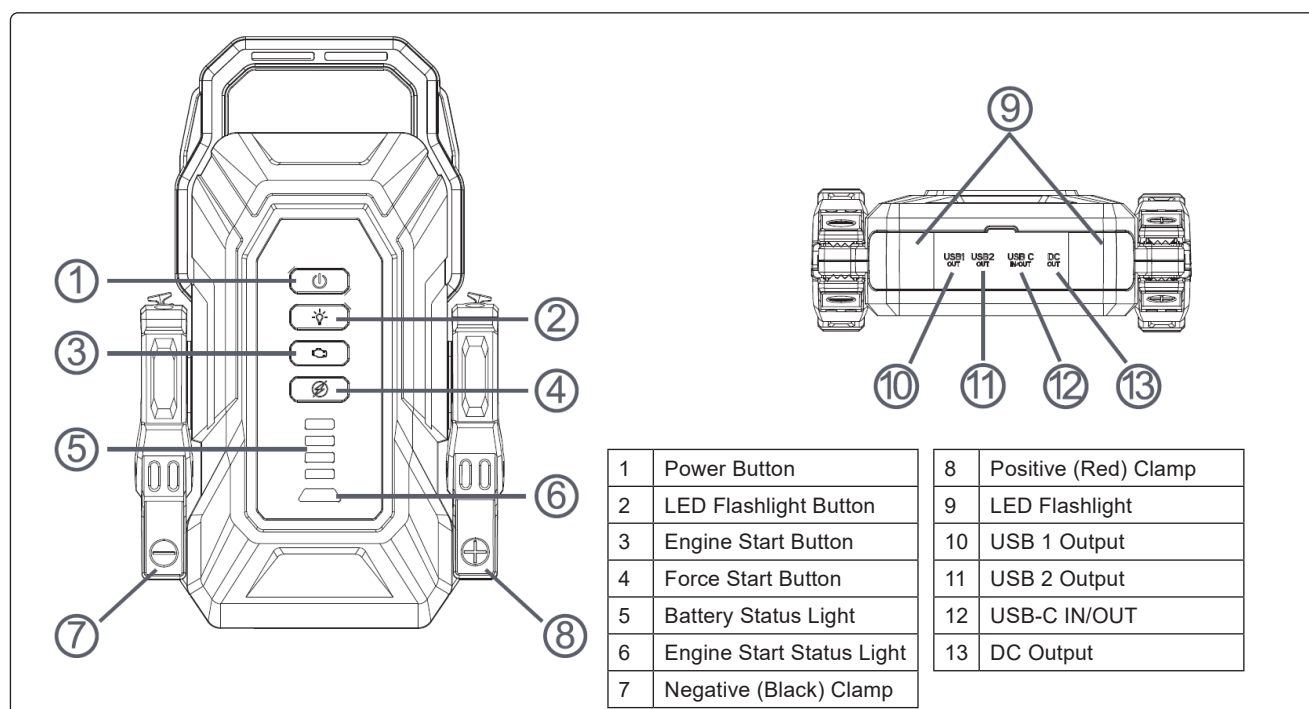
Easily fits in a glove box or backpack and benefits from being compact and lightweight. PowerRED by lithium-ion technology and fully protected against short circuit, overload and reverse polarity. Fitted with a 32,000mAh lithium-ion battery and two USB Type-A outlets (5V/2A, 9V/1.5A), Type-C input and output leads (5V/3A, 9V/3A, 12V/3A, 15V/3A, 20V/2.25A) and DC output 15V/10A. This unit can also supply several full charges for smartphones and tablets/laptops. Capable of starting a 12L petrol or 10L diesel engine. Integral LED flashlight with multiple settings (Solid, SOS, Flash). Supplied in a sturdy hard-shell zip-up case with battery clamps and two USB cables.

## 3. SPECIFICATION

Model No:..... RS4000  
Auxiliary Output:..... USB (x2) both - 5V/2A, 9V/1.5A  
.....Type-C - 5V/3A, 9V/3A, 12V/3A, 15V/3A, 20V/2.25A  
.....and DC Output 15V/10A  
Cable & Clamp Length: ..... 430mm  
Capacity: ..... 12V

Maximum Current:.....4000A Peak, 2000A Cranking  
Maximum Starting Capacity: ..... 12L Petrol, 10L Diesel  
Nett Weight: ..... 2.85kg  
Size (W x D x H): ..... 311 x 152 x 65mm  
Voltage: ..... 12V

## 4. OPERATION

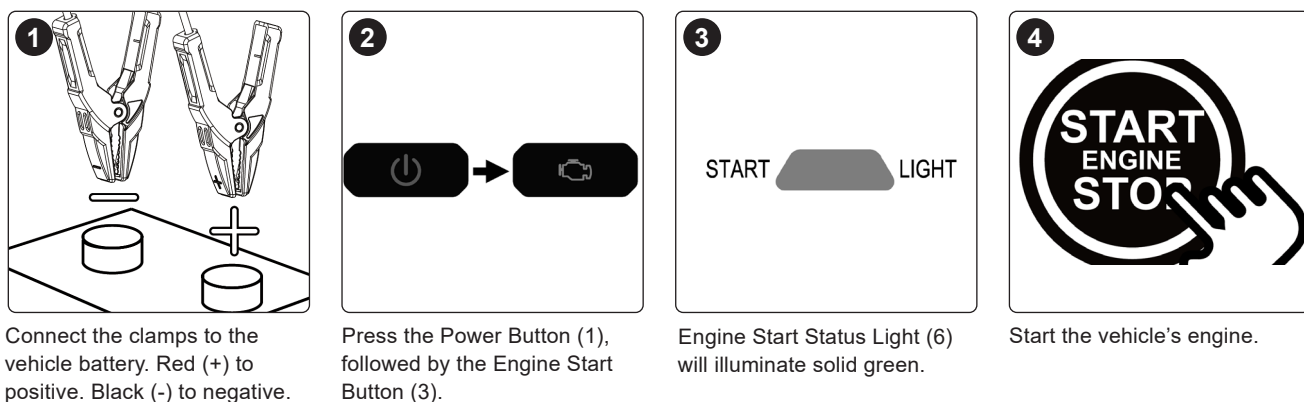


### 4.1. CHARGING THE UNIT

Ensure the battery is fully charged before initial use. Insert the RS4000 charging cable into the USB-C IN/OUT port (12). Connect the charging cable to a suitable USB port or wall charger (not included).

### 4.2. JUMP-START A VEHICLE

Before starting the vehicle, ensure the RS4000 battery has more than 80% charge.



### 4.3. FORCE START

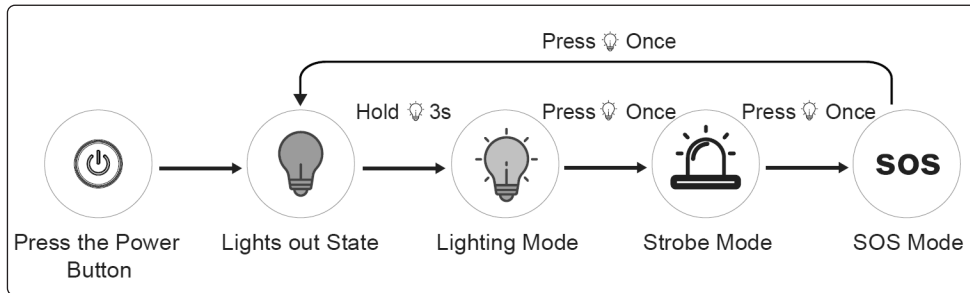
If your vehicle battery voltage is low (below 2V), press and hold Force Start Button (4) for 3 seconds (Engine Start Status Light in solid GREEN) to force start your vehicle. Make sure the Engine Start Button (3) is activated when using this function and **DO NOT** short circuit the clamps, as it may cause a hazard.

### 4.4. CHARGING A MOBILE PHONE OR DEVICE

Insert the phone's charging cable into the USB port. Insert the charging cable into the input port of the phone. Press the RS4000 power button (1) to begin charging.

#### 4.5. TURNING ON THE FLASHLIGHT

Long press the Flashlight Button (2) for 3 seconds in any mode to turn off the LED Flashlight function.



#### 4.6. JUMPER CABLE INDICATOR INSTRUCTION

INDICATOR	SITUATION	SOLUTION
Engine Start Status Light is flashing GREEN and RED.	The Engine Start Button is activated.	N/A
Engine Start Status Light is solid GREEN.	Clamps are correctly connected to the vehicle battery, and it's ready to start.	Start the engine.
	Force Start function activated.	<b>DO NOT</b> short circuit the clamps or connect them to each other. Then start the engine.
Engine Start Status Light is solid RED with quick beeping.	Short circuit protection.	Remove the clamps and connect them correctly.
Engine Start Status Light is solid RED with continuous beeping.	Reverse polarity protection.	Correct the connection. RED to positive, BLACK to negative.
Engine Start Status Light is solid RED with intermittent beeping.	High temperature protection.	Remove the clamps to let it cool down.
Engine Start Status Light is solid RED.	Low voltage protection.	Charge the RS4000 battery to at least 80% charge.
	Start timeout protection.	Engine started successfully; remove the clamps in 30 seconds. Or, engine failed to start; remove the clamps for a 60 seconds break, then reconnect the jumper cable. If still fails after 3 attempts, stop trying and check for other issues.

#### 4.7. FAQ

**Q: How do I turn off the unit?**

A: The unit will automatically power off in 30 seconds when no load is detected or when the charging is completed.

**Q: What is the expected battery life for the unit after being fully charged without use?**

A: The battery typically lasts 3-6 months; however, we recommend recharging it every 3 months.

**Q: What temperature is safe for using and storing the unit?**

A: The unit works best between -20°C to 60°C. Avoid storing it in a hot vehicle for long periods, as temperatures above 60°C can damage the battery and make it unsafe.

**Q: How do I know if I've connected the unit to the vehicle correctly?**

A: When the battery clamps are connected correctly on the vehicle battery, the Engine Start Status Light will be solid GREEN.

**Q: Can this unit charge other devices while it is being charged?**

A: No.

**Q: Can this product charge other devices while starting a vehicle?**

A: No.

## 5. TROUBLESHOOTING

PROBLEM	POSSIBLE CAUSE	POSSIBLE SOLUTION
No response when pressing the power button.	Low voltage detected, the unit shuts down for protection.	Recharge the unit.
Four battery status lights flashing simultaneously.	High temperature detected.	<b>DO NOT</b> use the unit and let it cool down.
	Low temperature detected.	<b>DO NOT</b> use the unit until it returns to normal temperature.
Unit fails to jump-start	Insufficient power level.	Keep the battery level higher than 80%.
	Bad connections caused by rust or dirt on vehicle's battery terminals.	Clean the terminals and try again.
	The clamps are connected incorrectly.	Ensure the clamps are connected to the correct terminals.
	Problems unrelated to the vehicle's battery.	Use the appropriate equipment to check the error code of the vehicle.
	Jump start the vehicle with a different voltage battery.	This unit is for vehicles (equipment) with 12V battery only.



### ENVIRONMENT PROTECTION

Recycle unwanted materials instead of disposing of them as waste. All tools, accessories and packaging should be sorted, taken to a recycling centre and disposed of in a manner which is compatible with the environment. When the product becomes completely unserviceable and requires disposal, drain any fluids (if applicable) into approved containers and dispose of the product and fluids according to local regulations.



REGISTER YOUR  
PURCHASE HERE



### WEEE REGULATIONS

Dispose of this product at the end of its working life in compliance with the EU Directive on Waste Electrical and Electronic Equipment (WEEE). When the product is no longer required, it must be disposed of in an environmentally protective way. Contact your local solid waste authority for recycling information.

**Note:** It is our policy to continually improve products and as such we reserve the right to alter data, specifications and component parts without prior notice. Please note that other versions of this product are available. If you require documentation for alternative versions, please email or call our technical team on [technical@sealey.co.uk](mailto:technical@sealey.co.uk) or 01284 757505.

**Important:** No Liability is accepted for incorrect use of this product.

**Warranty:** Guarantee is 12 months from purchase date, proof of which is required for any claim.

**Jack Sealey Ltd t/a Sealey Group**, Kempson Way, Suffolk Business Park, Bury St Edmunds, Suffolk, IP32 7AR UK  
**Jack Sealey (EU) Ltd t/a Sealey Group**, Farney Street, Carrickmacross, Co. Monaghan, A81 PK68 Ireland  
**Tel:** 01284 757500 • **Email:** [sales@sealey.co.uk](mailto:sales@sealey.co.uk) • **Web:** [www.sealey.co.uk](http://www.sealey.co.uk)