

Thank you for purchasing a Sealey product. Manufactured to a high standard this product will, if used according to these instructions and properly maintained, give you years of trouble free performance.



IMPORTANT: PLEASE READ THESE INSTRUCTIONS CAREFULLY. NOTE THE SAFE OPERATIONAL REQUIREMENTS, WARNINGS & CAUTIONS. USE THE PRODUCT CORRECTLY AND WITH CARE FOR THE PURPOSE FOR WHICH IT IS INTENDED. FAILURE TO DO SO MAY CAUSE DAMAGE OR PERSONAL INJURY, AND WILL INVALIDATE THE WARRANTY. PLEASE KEEP INSTRUCTIONS SAFE FOR FUTURE USE.

- p **WARNING! Only fully trained and qualified persons should use this equipment. These instructions are not a substitute for the user receiving full supervised training by a qualified technician. It is very important the user understands the product applications, limitations, and specific potential hazards.**

1. SAFETY INSTRUCTIONS

- p **WARNING! Ensure health & safety, local authority, and general workshop practice regulations are adhered to when using this equipment.**
- 3 Familiarise yourself with product application and limitations, as well as the specific potential hazards peculiar to the straightener.
- p **WARNING! this kit is not designed for lifting loads. It is intended only as a pulling device and must be used with care.**
- p **WARNING! Disconnect the puller from the hydraulic pump before attempting servicing or performing any maintenance on the unit.**
- 3 Maintain puller kit in good order. Replace/repair with *genuine parts only*. *Non genuine parts may be dangerous and will invalidate the warranty.*
- 3 Inspect claws for signs of wear, fatigue or damage. If suspect remove from service and replace items.
- p **WARNING! Ensure you know how much load you are pulling. Never exceed maximum pulling capacity.**
- 3 Only use in conjunction with an appropriate Sealey hydraulic pump and chain kit RE91/5/CK. Contact your local dealer for details.
- 3 Fit chains, hooks, clamps or other accessory to load to be pulled. Ensure accessories are equal to, or exceed pullers maximum capacity.
- 3 Ensure there is positive engagement of the puller claw hooks to the load or accessory before pulling.
- p **WARNING! Keep hands, body and clothing away from puller and accessories in use. Place tarpaulin or heavy cover over chains to minimise any backlash if chains fail. Take any necessary precautions to protect your personal safety whilst using the puller.**
- 3 Maintain correct balance and footing whilst using the puller.
- 3 Keep non essential persons away from operating area. Be aware of the location of other persons assisting you.
- 7 DO NOT operate puller if any parts are damaged or missing as this may cause failure or possible personal injury.
- p **WARNING! DO NOT use puller as a lifting device of any type. DO NOT use for any purpose other than for which it is designed and DO NOT exceed the rated capacity of the puller.**
- 7 DO NOT pull chains or cables over or around a corner. DO NOT wrap chains or cables around any object, hooking back on to itself.
- 7 DO NOT operate the puller if you are tired, under the influence of alcohol, drugs or intoxicating medication.

CARE OF PULLER

When not in use, replace the hydraulic inlet dust cap and clean the puller. The pull ram piston remains in the extended position. To protect the shaft from rusting always grease it, wrap in an oily cloth and store in a safe, dry, childproof location.

Declaration of Conformity We, the sole importer into the UK, declare that the product listed below is in conformity with the following EEC standards and directives.

5 TON PULL KIT
Model RE91/5
98/37/EC Machinery Directive



The construction file for this product is held by the Manufacturer and may be inspected on request by contacting Jack Sealey Ltd

Signed by Mark Sweetman

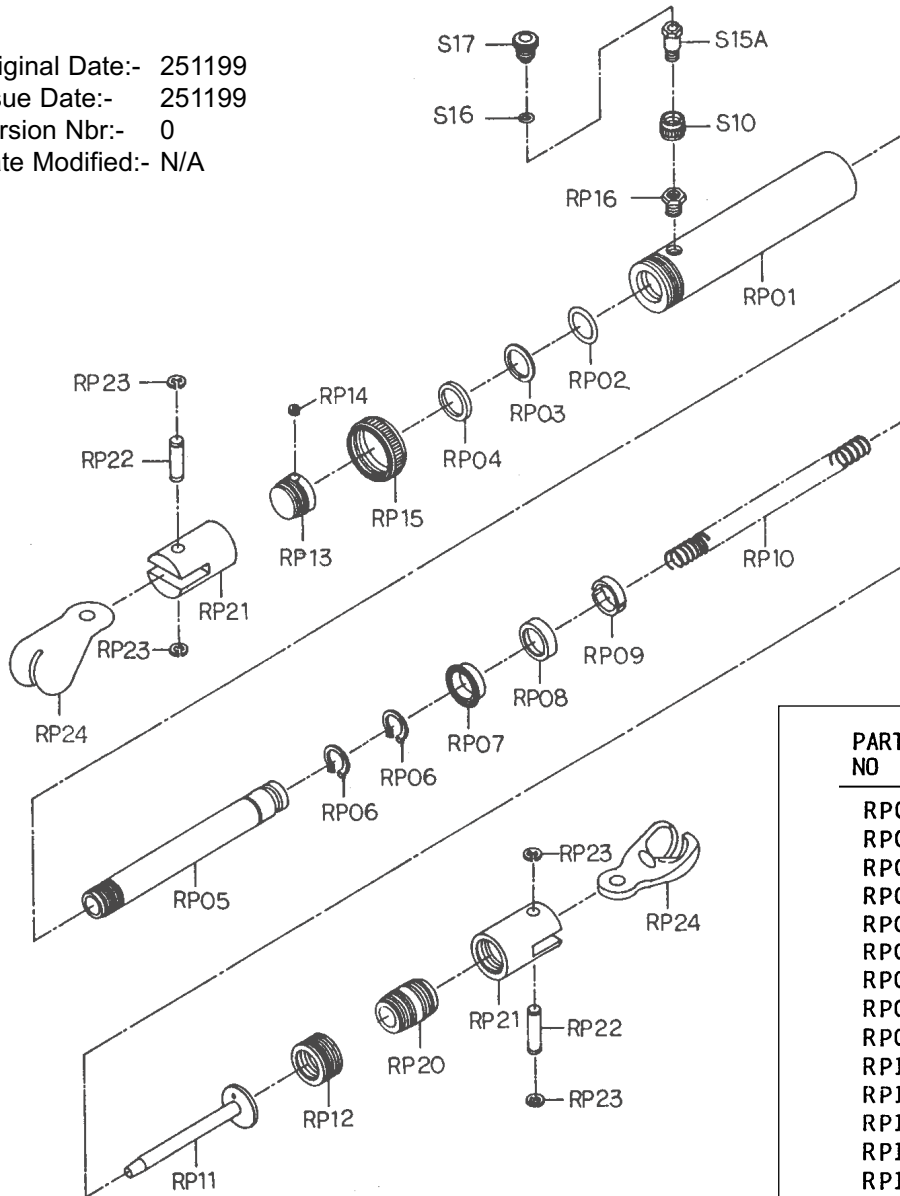
25th November 1999

For Jack Sealey Ltd. Sole importer into the UK of Sealey Power Products

2. PARTS LIST

RE91/5

Original Date:- 251199
 Issue Date:- 251199
 Version Nbr:- 0
 Date Modified:- N/A



PARTS NO	DESCRIPTION	Q'TY
RP01	CYLINDER	1
RP02	"O"-RING	1
RP03	BACK-UP RING	1
RP04	WIPER SEAL	1
RP05	RAM	1
RP06	SNAP-RING"C"	2
RP07	CUP SEAL	1
RP08	BUSHING	1
RP09	BEARING	1
RP10	SPRING	1
RP11	GUIDE ROD	1
RP12	BASE PLUG	1
RP13	SADDLE	1
RP14	SET SCREW	1
RP15	THREAD PROTECTOR	1
RP16	JOINT, SCREW	1
S10	COUPLING RING	1
S15A	COUPLING BOLT	1
S16	BOLT"O"-RING	1
S17	DUST CAP	1
RP20	MALE CONNECTOR	1
RP21	CONNECTION SEAT	2
RP22	PIN	2
RP23	SNAP-RING"E"	4
RP24	CLAW HOOK	2

NOTE: It is our policy to continually improve products and as such we reserve the right to alter data, specifications and component parts without prior notice.

IMPORTANT: No liability is accepted for incorrect use of this equipment

WARRANTY: Guarantee is 12 months from purchase date, proof of which will be required for any claim.

INFORMATION: Call us for a copy of our latest catalogue on 01284 757525 and leave your full name and address including your postcode.

SEALEY POWER PRODUCTS

Sole UK Distributor
 Sealey Group,
 Bury St. Edmunds, Suffolk.



01284 757500



01284 703534

E-mail: sales@sealey.co.uk