

Thank you for purchasing a Sealey product. Manufactured to a high standard this product will, if used according to these instructions and properly maintained, give you years of trouble free performance.



IMPORTANT: PLEASE READ THESE INSTRUCTIONS CAREFULLY. NOTE THE SAFE OPERATIONAL REQUIREMENTS, WARNINGS AND CAUTIONS. USE THE PRODUCT CORRECTLY AND WITH CARE FOR THE PURPOSE INTENDED. FAILURE TO DO SO MAY CAUSE DAMAGE AND/OR PERSONAL INJURY AND WILL INVALIDATE THE WARRANTY. PLEASE KEEP INSTRUCTIONS SAFE FOR FUTURE USE.

1. SAFETY INSTRUCTIONS

- ✓ Always lower the support frame before attempting to move the remover/installer and door .
- ✓ Only use on firm, level, unobstructed surfaces which are capable of supporting the remover/installer.
- ✗ **DO NOT** overload - maximum capacity is 200kg.
- ✗ **DO NOT** mount/ride the remover/installer yourself, or allow others to do so.
- ✗ **DO NOT** use on tarmac/adam. Must only be used on a concrete surface.
- ✓ Replace or repair damaged parts. Use only recommended parts. Unauthorised parts may be dangerous and will invalidate the warranty.
- ✓ Use a qualified person to lubricate and maintain the remover / installer.
- ✗ **DO NOT** use brake fluid to top up hydraulic unit. Use Sealey hydraulic oil only.
- ☐ **WARNING!** Failure to comply with these instructions may result in loss of load, damage to remover/installer or other property and/or personal injury.

2. INTRODUCTION & SPECIFICATION

Turns a two-man task into a single-handed operation. Hydraulic lifting arms support weight of car door while allowing fine vertical alignment of hinges. Suitable for road-going cars. Fitted with four Ø75mm castors.

Specification

Maximum Load	200kg	Min. Aperture	845mm
Min. Lift Height	240mm	Max. Aperture	1285mm
Max. Lift Height	370mm		

3. ASSEMBLY

The numbers in brackets refer to fig.1

- 3.1 Attach main posts (6) to cross bars (20) with bolts (12), flat washers (9) and nuts (11). Tighten the bolts.
- 3.2 Attach casters (10) to cross bars (20) with nuts (8). Tighten the bolts.
- 3.3 Insert lifting post (19) between main posts (6) and connect main posts with plates A(18) and B(25) with bolts (22), flat washers (3) and nuts (23). Tighten the bolts.
- 3.4 Assemble the bottle jack (7) on the main posts (6) with bolts (15), flat washers (14) and nuts (13). Tighten the bolts.

The numbers in brackets refer to figs.1&2

- 3.5 Insert adjustable top bar (1) into main post (6) line up holes and insert locking pin (5) and secure with 'R' clip.
- 3.6 Install position fixed rods (4) between the adjustable top bar (1) with flat washer (9), large flat washer (26) and butterfly nuts (2).
- 3.7 Fix the support frame (16) on the lifting post (19) by bolts (12), flat washers (9) and nuts (11). Tighten the bolts.

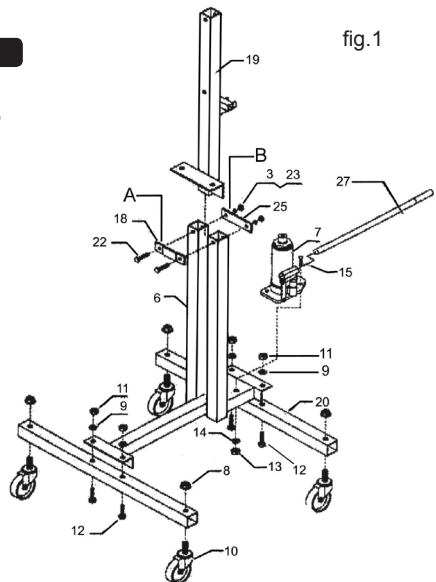
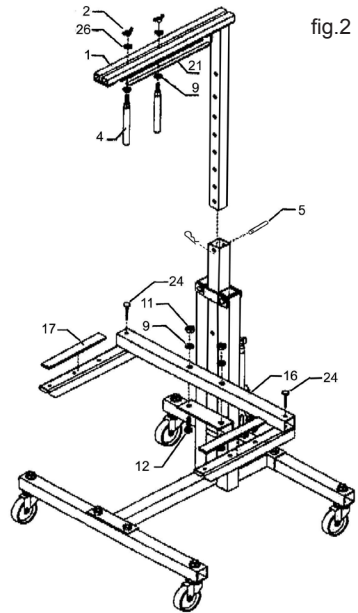


fig.1

4. OPERATING INSTRUCTIONS

Before first use prime the hydraulic unit. Release the valve and pump the handle 15-20 times. Close the valve and test the hydraulic unit by pumping it up to its maximum height and then lowering again.

- 4.1 Lower the glass window of the car door to the lowest position before using the door remover / installer.
- 4.2 Release the valve of the bottle jack and adjust the support frame (16) under the car door and maintain a small gap.
- 4.3 Adjust the top bar (1), leave a small gap between the car door and the top bar.
- 4.4 Tighten the valve of the bottle jack and then operate, lifting the support frame until it reaches the bottom of the car door.
- 4.5 Lower the top bar (1), until it reaches the top of the car door, line up holes in the top bar and lifting post and insert locking pin (5) then secure with 'R' clip. Adjust position of the fixed rods (4) ensuring the car door is securely between them and that it is vertical. Tighten the butterfly nuts.
- 4.6 Obtain the correct alignment and raise or lower the car door by operating the hydraulic unit.



5. MAINTENANCE

- 5.1 Daily: Check for damage and oil leaks.
- 5.2 Monthly: Oil moving parts. Check for abnormal wear and tear. With support frame at lowest point, check hydraulic oil level by removing filler plug on the bottle jack body. Level should be at bottom of filler hole. Top up, or allow to drain, as necessary. Replace plug.

6. FAULTS

- 6.1 Lifting frame does not reach full height - low oil level, check and fill (see 5.2.).
- 6.2 Pump ineffective:
 - a) Oil level too high, check and drain (see 5.2.).
 - b) Too much air present in system - allow hydraulic unit to settle for 1 hour before releasing the valve and pumping the handle 15-20 times. Close the valve and test the unit by pumping it up to its maximum height and then lowering again.

NOTE: It is our policy to continually improve products and as such we reserve the right to alter data, specifications and component parts without prior notice.
IMPORTANT: No liability is accepted for incorrect use of product.

WARRANTY: Guarantee is 12 months from purchase date, proof of which will be required for any claim.

INFORMATION: For a copy of our latest catalogue and promotions call us on 01284 757525 and leave your full name and address, including postcode.



Sole UK Distributor
Sealey Group,
Bury St. Edmunds, Suffolk.

☎ 01284 757500
📠 01284 703534

🌐 www.sealey.co.uk
✉ sales@sealey.co.uk





EC DECLARATION OF CONFORMITY

We the sole importers into the UK, hereby declare that the equipment described below

Description and Function:.....Hydraulic Door Remover/Installer.....

Model/Type:.....RE80.V2.....

Serial number (optional):.....

Manufacturer's authorised representative within the EC: **Jack Sealey Ltd. Kempson Way, Suffolk Business Park, Bury St. Edmunds Suffolk, IP32 7AR**

Conforms to the requirements of the following Directives, as indicated.

- 2006/42/EC Machinery Directive
- 2000/14/EC Outdoor Noise Emissions Directive
- 2006/95/EC Low Voltage Directive
- 2002/96/EC WEEE Directive
- 2004/108/EC EMC Directive
- 2002/95/EC RoHS Directive
- 93/68/EEC CE Marking Directive

And the following harmonised standard(s): **BS EN 1494: 2001**.....

National technical standards and specifications (if applicable):.....

Technical file compiled by: **Jack Sealey Ltd.**

Signed:.....

Date:.....08-Oct-2009.....

Place: Bury St. Edmunds.

Name:.....Mark Sweetman.....

Position:.....Managing Director.....

Being the responsible person appointed by the manufacturer.



Sealey Power Products, Kempson Way,
Suffolk Business Park, Bury St. Edmunds,
Suffolk, IP32 7AR

