

Thank you for purchasing a Sealey Product. Manufactured to a high standard this product will, if used according to these instructions and properly maintained, give you years of trouble free performance.

IMPORTANT: PLEASE READ THESE INSTRUCTIONS CAREFULLY. NOTE THE SAFE OPERATIONAL REQUIREMENTS, WARNINGS AND CAUTIONS. USE THIS PRODUCT CORRECTLY AND WITH CARE FOR THE PURPOSE FOR WHICH IT IS INTENDED. FAILURE TO DO SO MAY CAUSE DAMAGE OR PERSONAL INJURY, AND WILL INVALIDATE THE WARRANTY. PLEASE KEEP INSTRUCTIONS SAFE FOR FUTURE USE.

	SIZE 0		Spring Dia: 50-100 mm PITCH ON 360° ABOUT 20 mm
	SIZE 1A		Spring Dia: 85-150 mm PITCH ON 240° ABOUT 22mm
	SIZE 1N		Spring Dia: 80-165 mm PITCH ON 240° ABOUT 24 mm
	SIZE 2N		Spring Dia: 155-195 mm PITCH ON 240° ABOUT 30 mm
	SIZE 3N		Spring Dia: 180-240 mm PITCH ON 240° ABOUT 40 mm
	SIZE 5		PEUGEOT AND CITROEN ONLY
	SIZE 6		BMW 8 SERIES MITSUBISHI GALANT FORD PROBE MAZDA MX6 WITH ELECTRONIC STRUT USE WITH SIZE 2N
			CONICAL ADAPTOR PART NO 369/1590-1

1. SAFETY INSTRUCTIONS

- WARNING!** Ensure health & safety, local authority, and general workshop practice regulations are adhered to when using this equipment.
- 3 Familiarise yourself with this products application and limitations, as well as the specific potential hazards peculiar to the spring compressor .
- 3 Maintain the spring compressor in good condition. Replace or repair damaged parts. *Use genuine parts only. Non authorised parts may be dangerous and will invalidate the warranty.*
- 3 Keep the work area clean, uncluttered and ensure there is adequate lighting.
- WARNING!** Wear approved safety eye protection (standard spectacles are not adequate).
- 3 Keep hands and body clear of the work operating the spring compressor.
- 3 Maintain correct balance and footing. Ensure the floor is not slippery and wear non slip shoes.
- 3 Remove ill fitting cloths. Remove ties, watches, rings, other loose jewellery. Contain and/or tie back long hair.
- 3 Wear appropriate protective clothing.
- 3 Keep children and unauthorised persons away from the working area.
- DANGER!** Stop compressing the spring before it becomes coil bound. Exercise particular caution when using air impact wrench. Failure to observe this rule may damage the shear pin.
- 3 When the spring is released, ensure the spindle jaw does not contact the spring pan.
- 7 DO NOT operate spring compressor if parts are damaged or missing as this may cause failure or personal injury.
- 7 DO NOT use compressor on coil springs which have a spring pressure greater than 7,500 N (750kg).
- DO NOT use on conical springs unless using conical adaptor 369/1590-1
- 7 DO NOT force the spring compressor to achieve a task it was not designed to perform.
- 7 DO NOT allow untrained persons to use the spring compressor.
- 7 DO NOT operate spring compressor if you are tired, under the influence of alcohol, drugs or intoxicating medication.
- 3 When not in use clean and store the spring compressor in a safe, dry, childproof location.

2. TECHNICAL SPECIFICATIONS

- Maximum Jaw Opening290mm
- Minimum Jaw Opening45mm
- Length410mm
- Maximum spring load7,500 N
- Ultimate stress limit32,000 N
- Minimum spring capacity50mm O.D.
- Maximum spring capacity240mm O.D.
- Safety factor4-7



NOTE: It is our policy to continually improve products and as such we reserve the right to alter data, specifications and component parts without prior notice. **IMPORTANT:** No liability is accepted for incorrect use of this equipment. **WARRANTY:** Guarantee is 12 months from purchase date. proof of which will be required for any claim. **INFORMATION:** Call us for a copy of our latest catalogue on 01284 757525 and leave your full name and address including your postcode.

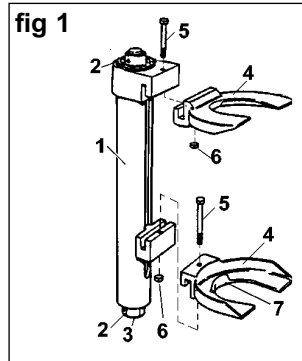
3. INTRODUCTION & DESCRIPTION

The RE222 is designed to allow the replacement of both coil springs and MacPherson strut inserts without the removal of the strut from the vehicle. It is a cylinder type spring compressor system designed for use on all MacPherson strut coil springs and conventional front and rear suspensions.

Component description (refer to fig 1).

The compressor consists of a solid steel body or cylinder mounted with two forged jaw interlocks, one on the body and the other on a centrally mounted spindle.

- | | |
|---------------------------|--------------------------------|
| 1 Body cylinder | 5 Retaining pins |
| 2 Shear Pin | 6 Retaining pin nuts |
| 3 Hex nut | 7 Safety lips |
| 4 Jaws | |



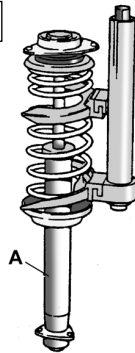
- m The spindle (which is driven by a 24mm hex nut), is located in two axial bearings which absorb the tension and friction forces during operation and reduce effort.
- m The complete assembly is case hardened to increase tensile strength.
- m There are two shear/fracture points for increased safety. Should the compressor become overloaded one of the shear/fracture points will break leaving the spring safely compressed.
- m A range of drop forged jaws are available to match all current MacPherson strut spring sizes.
- m Each jaw has a safety lip to eliminate slip and is designed to fit the pitch of the spring to ensure maximum surface contact between jaws and spring, thus eliminating the risk of the compressor slipping around the spring.
- m The jaws are unique in their design as they interlock with the compressor body without requiring a retaining or load bearing bolt. The load is transmitted through the machined mating faces to nitrided compressor spindle.
- m The ability to engage jaws with an interlock, enables the tool to be used without removing the MacPherson strut from the vehicle.

4. INSTRUCTIONS FOR USE

4.1. TO COMPRESS STRUT FITTED TO VEHICLE.

- 4.1.1. Put the jaws into position and engage them on the spring as far apart as possible and in line with one another. Ensure the safety lips (fig 1.7), are correctly engaged and insert the retaining pins wherever possible.
- 4.1.2. Put the RE222 body into position as show in fig 2, (A = MacPherson strut), and engage the interlocks into the jaws.
- 4.1.3. Ensure the jaws and body are correctly aligned and the retaining pin is inserted whenever possible.
- 4.1.4. Extend compressor by hand then turn the 24mm hex drive (fig1.3) clockwise using air or hand tools and compress the spring without allowing it to become coil bound.
- 4.1.5. Remove spring when it is fully compressed and is free to rotate.
- 4.1.6. To decompress the spring, reverse the compress procedure.

fig 2



4.2. CONICAL ADAPTOR 369/1590-1

- 4.2.1. The shape of some coil springs which have a diameter at the top of the spring much greater than at the bottom (fig 3), will not permit the use of the standard RE222. Safe compression of the conical coil spring can only be achieved if the spring compressor remains at a right angle to the top spring coil.
- 4.2.2. Conical Adaptor 369/1590-1 has a simple locking jaw system to fit spring sizes from 85mm to 195mm diameter. Used with the appropriate jaws on the bottom spring coil will bring the spring compressor into required alignment for safe compression (fig 4).
- 4.2.3. Adaptor is supplied with retaining bolt/nut which must be inserted.

fig 3

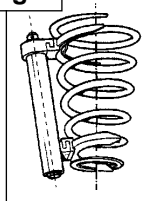
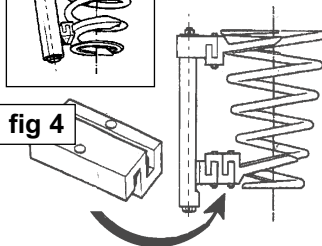


fig 4



4.3. TO COMPRESS STRUT REMOVED FROM VEHICLE.

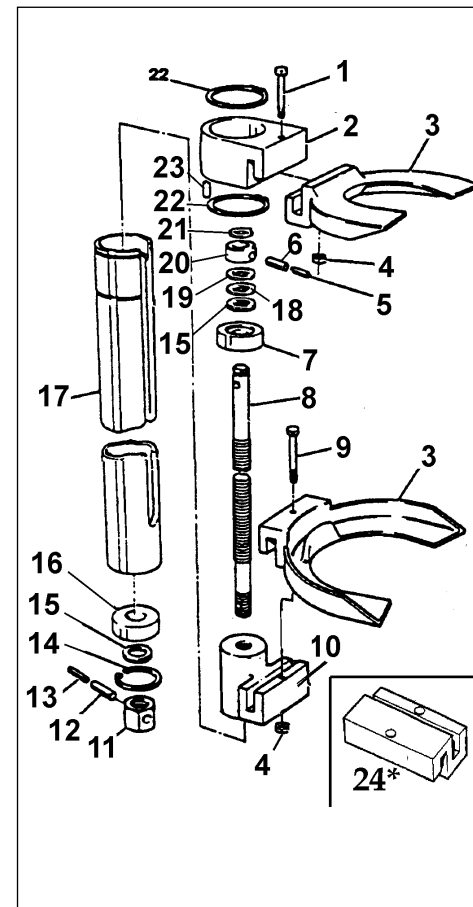
- 4.3.1. Align the body mating interlocks, ensuring that they face in the correct direction and engage the jaws.
- 4.3.2. To keep jaws from moving, insert the retaining pins (fig 1. 5) through the jaws and carriers, and secure with pin nuts (6).
- 4.3.3. Extend the compressor using the 24mm hex drive nut (fig 1.3). Grasp as many spring coils as possible and ensure that the spring is correctly seated in the jaws.
- 4.3.4. Turn the 24mm hex drive nut clockwise using air or hand tools to compress the spring.
- 4.3.5. Observe end of stroke restrictions to keep the spring from becoming coil bound.

5. MAINTAINING THE COMPRESSOR

- 5.1. Before each use check the compressor to ensure it is not damaged or worn. If suspect do not use the unit, but contact your your local Sealey Dealer who will be able to advise you regarding repair kits and spare parts.
- 5.2. Keep the compressor spindle lubricated. **IMPORTANT: Use "Molycot GN" lubricant only.**
- 5.3. Keep the compressor clean, and when not in use store in a safe, dry, childproof location.

6. PARTS LIST

Original Date:	010899
Issue Date:	010899
Version No:	0
Date Modified:	N/A



Index no.	Stock Code	Description
1	369/0015-0010	Retaining Pin
2	369/0015-0003	Fixed Jaw Mount
3	369/1500	Jaws, size 0, pair
	369/1512	Jaws, size 1A, pair
	369/1510	Jaws, size 1N, pair
	369/1520	Jaws, size 2N, pair
	369/1530	Jaws, size 3N, pair
	369/1550	Jaws, size 5, pair (A & B)
	369/1571	Jaw for BMW 8 Series
	369/1561	Jaw, size 6, single
4	369/0014-0025	Nut, M5
5	369/0014-0019	Rolled Pin, 4 x 28 mm
6	369/0014-0017	Rolled Pin, 6 x 28 mm
7	369/0013-0006	Bearing Bushing
8	369/0014-0002	Spindle
9	369/0015-0010	Retaining Pin, 4 x 40 mm
10	369/2000-0005	Spindle Jaw Mount
11	369/0014-0004	Hex Drive Nut, 24 mm
12	369/0014-0016	Rolled Pin, 6 x 24 mm
13	369/0014-0018	Rolled Pin, 4 x 24 mm
14	369/0014-0023	Circlip, 40 x 1.25 mm
15	369/0014-0014	Axial Thrust Bearing
16	369/0014-0006	Bearing Bushing
17	369/2000-0001	Cylinder Body
18	369/0014-0020	Shim Washer, 0.25
19	369/0014-0021	Shim Washer, 0.5
20	369/0014-0013	Collar
21	369/0014-0028	Circlip, Ø 15 mm
22	369/0014-0022	Circlip, Ø 50 mm
23	369/0013-0020	Key
—	369/2000-0040	Large Repair Kit
—	369/2000-0035	Small Repair Kit
24*	369/1590-1	Conical Adaptor Accessory not in kit.