

Thank you for purchasing a Sealey product. Manufactured to a high standard this product will, if used according to these instructions and properly maintained, give you years of trouble free performance.



IMPORTANT: PLEASE READ THESE INSTRUCTIONS CAREFULLY. NOTE THE SAFE OPERATIONAL REQUIREMENTS, WARNINGS & CAUTIONS. USE THE PRODUCT CORRECTLY AND WITH CARE FOR THE PURPOSE FOR WHICH IT IS INTENDED. FAILURE TO DO SO MAY CAUSE DAMAGE OR PERSONAL INJURY, AND WILL INVALIDATE THE WARRANTY. PLEASE KEEP INSTRUCTIONS SAFE FOR FUTURE USE.

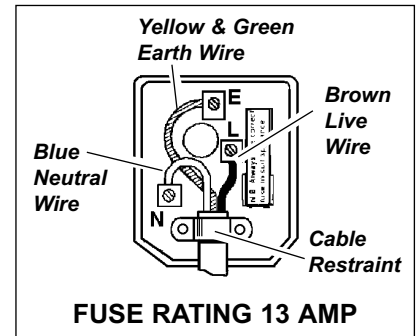
1. SAFETY INSTRUCTIONS

1.1. ELECTRICAL SAFETY

WARNING! It is the responsibility of the owner and the operator to read, understand and comply with the following:

You must check all electrical products, before use, to ensure that they are safe. You must inspect power cables, plugs, sockets and any other connectors for wear or damage. You must ensure that the risk of electric shock is minimised by the installation of appropriate safety devices. A Residual Current Circuit Breaker (RCCB) should be incorporated in the main distribution board. We also recommend that a Residual Current Device (RCD) is used. It is particularly important to use an RCD with portable products that are plugged into a supply which is not protected by an RCCB. If in any doubt consult a qualified electrician. You may obtain a Residual Current Device by contacting your Sealey dealer. **You must** also read and understand the following instructions concerning electrical safety.

- 1.1.1. The **Electricity at Work Act 1989** requires all portable electrical appliances, if used on business premises, to be tested by a qualified electrician, using a Portable Appliance Tester (PAT), at least once a year.
- 1.1.2. The **Health & Safety at Work Act 1974** makes owners of electrical appliances responsible for the safe condition of those appliances and the safety of the appliance operators. **If in any doubt about electrical safety, contact a qualified electrician.**
- 1.1.3. Ensure that the insulation on all cables and on the appliance is safe before connecting it to the power supply. See 1.1.1. and 1.1.2. and use a Portable Appliance Tester.
- 1.1.4. Ensure that cables are always protected against short circuit and overload.
- 1.1.5. Regularly inspect power supply cables and plugs for wear or damage and check all connections to ensure that none is loose.
- 1.1.6. **Important:** Ensure that the voltage marked on the appliance matches the power supply to be used and that the plug is fitted with the correct fuse - see fuse rating at right.
- 1.1.7. **DO NOT** pull or carry the appliance by the power cable.
- 1.1.8. **DO NOT** pull the plug from the socket by the cable.
- 1.1.9. **DO NOT** use worn or damaged cables, plugs or connectors. Immediately have any faulty item repaired or replaced by a qualified electrician. When an ASTA/BS approved UK 3 pin plug is damaged, cut the cable just above the plug and **dispose of the plug safely**. Fit a new plug according to the following instructions (UK only).




a) Connect the **GREEN/YELLOW** earth wire to the earth terminal 'E'.

b) Connect the **BROWN** live wire to the live terminal 'L'.

c) Connect the **BLUE** neutral wire to the neutral terminal 'N'.

d) **After wiring, check that there are no bare wires, that all wires have been correctly connected, that the cable outer insulation extends beyond the cable restraint and that the restraint is tight.**

Double insulated products, which are always marked with this symbol , are fitted with live (brown) and neutral (blue) wires only. To rewire, connect the wires as indicated above - **DO NOT** connect either wire to the earth terminal.

- 1.1.10. Products which require more than 13 amps are supplied without a plug. In this case you must contact a qualified electrician to ensure that a suitably rated supply is available. We recommend that you discuss the installation of an industrial round pin plug and socket with your electrician.
- 1.1.11. If an extension reel is used it should be fully unwound before connection. A reel with an RCD fitted is preferred since any appliance plugged into it will be protected. The cable core section is important and should be at least 1.5mm², but to be absolutely sure that the capacity of the reel is suitable for this product and for others which may be used in the other output sockets, we recommend the use of 2.5mm² section cable.
- 1.1.12. **DO NOT** move the appliance whilst it is **ON**, always disconnect from the supply and allow to cool first.

1.2. GENERAL SAFETY

WARNING! Disconnect the heater from the mains power, before servicing or performing any maintenance, which must only be carried out by an authorised service agent. Report any oil leakage immediately to an authorised service agent.

- ✓ Replace or repair damaged parts. *Use recommended parts only. Non authorised parts may be dangerous and will invalidate the warranty.*
- ✓ Ensure that the heater is used in an area larger than 4m². Allow a few centimetres of clearance from any surface, and ensure there is good overhead clearance for heat circulation.
- ✓ Only use the heater in an upright position.

WARNING! do not tamper with the wiring, heating element or oil. The system is a sealed unit. The breaking of any seal may be dangerous, will damage the heater and invalidate the warranty.

- x **DO NOT** use the heater for anything other than its intended purpose. It is designed for providing heat in enclosed areas, no smaller than 4m², such as offices, homes, workshops etc. It is not suitable for drying clothes or laundry.
- x **DO NOT** place the heater close to a bath, wash basin, shower, swimming pool or any other water-filled area or wet surface. **DO NOT** get the heater wet or use in areas of high condensation.
- x **DO NOT** place the heater up against any surface such as a wall, door, furniture etc.
- x **DO NOT** place the heater immediately below any electrical outlet.
- x **DO NOT** allow the power lead to touch the radiator surface.
- x **DO NOT** cover the radiator or use it to dry laundry.
- x **DO NOT** switch the heater on whilst the electrical lead is wrapped in its storage area.
- x **DO NOT** store the electrical lead until the radiator is cold.
- x **DO NOT** attempt to repair a damaged heater, contact an authorised service agent.
- x **DO NOT** stand on the heater.
- x **DO NOT** touch the heating elements when the heater is on as it becomes very hot.



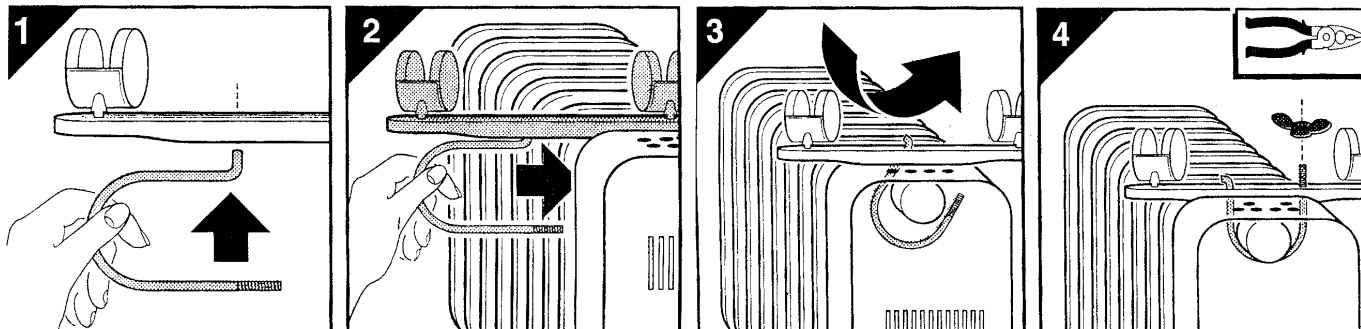
2. SPECIFICATIONS & ASSEMBLY

SPECIFICATIONS:

Model	Output/input	No of Elements
RD1500.V2	1500W/230V/13A	7
RD2500.V2	2500W/230V/13A	11

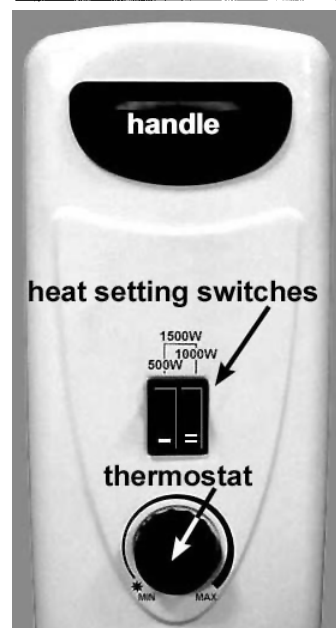
ASSEMBLY

Mount the castor wheels between the first and second element of each end of the radiator. Tighten the wing nuts on the metal loops and your heater is ready to use.



3. INSTRUCTIONS FOR USE

- 3.1. Unwrap the mains lead and plug it into the power supply.
 - 3.2. Turn the thermostat control to the highest setting.
 - 3.3. Choose the required heat output by selecting the appropriate switch which will light up when pressed.
- | | RD1500 | RD2500 | |
|---------------------|--------|--------|--|
| 3.4. Low setting | 500W | 1000W | Select switch with one white bar printed on it. |
| 3.4. Medium setting | 1000W | 1500W | Select switch with two white bars printed on it. |
| 3.4. High setting | 1500W | 2500W | Select both switches |
- 3.5. Once the required room temperature has been achieved turn the thermostat down until the light on the selected heat setting switch goes out. The heater will then keep the surrounding air at the set temperature by switching on and off at intervals. You may set reset the thermostat at any time.
 - 3.6. To switch the unit off, turn the heat selecting switches off and unplug from the mains. Allow the unit to cool before handling or storage.
 - 3.7. **Safety cut-out.** The heater is fitted with a thermostatic safety cut-out which will automatically turn the heater off should it be placed in circumstances that cause overheating or malfunction. Should this happen, switch the heater off and disconnect it from the mains. Allow the heater to cool before handling. Do not use the heater again until the cause has been identified and remedied. If necessary return the heater to your Sealey dealer for servicing.
 - 3.8. When used for the first time set the heater to maximum power for two hours. Ventilate the room well to eliminate the "new" smell which may emanate from the heater.



4. MAINTENANCE

WARNING! Disconnect the heater from the mains power, before servicing or performing any maintenance, which must only be carried out by an authorised service agent with the exception of the following.

- 4.1. Dust the radiator (when cold) with a dry cloth.
- 4.2. Do not use a strong abrasive to clean to clean the radiator.
- 4.3. When storing the heater in the summer, use the original shipping box and store in a safe, dry location.

Note: Report any oil leakage immediately to an authorised service agent.

5. PARTS LIST

RD2500.01Thermostat for RD2500	RD2500.02Heating Element RD2500	RD.42Wheel Support Screw
RD.01Thermostat for RD1500	RD.02Heating Element RD1500	RD.47Tip Over Switch
RD.03Rocker switch	RD.04Wheels (one set)	
RD.05Wheel Plate	RD.07Thermal Fuse	
RD.23Plastic Handle	RD.26Cord Windings	
RD.31Oil Seal Ring	RD.38Wheel	

OIL FILLED RADIATORS

Models RD1500.V2 & RD2500.V2

73/23/EEC Low Voltage Directive (S.I. 1994/3260)
89/336/EEC EMC Directive (S.I. 1992/2372 & Amendments)

Declaration of Conformity We, the sole importer into the UK, declare that the products listed here are in conformity with the following EEC standards and directives



The construction files for these products are held by the Manufacturer and may be inspected on request by contacting Jack Sealey Ltd.

Signed by Mark Sweetman

27th June 2002

For Jack Sealey Ltd. Sole importer into the UK of Sealey Power Products.

NOTE: It is our policy to continually improve products and as such we reserve the right to alter data, specifications and component parts without prior notice.
IMPORTANT: No liability is accepted for incorrect use of this product. **WARRANTY:** Guarantee is 12 months from purchase date, proof of which will be required for any claim. **INFORMATION:** Call us for a copy of our latest catalogue on 01284 757525 and leave your full name and address including your postcode.



Sole UK Distributor
Sealey Group,
Bury St. Edmunds, Suffolk.



01284 757500



01284 703534



www.sealey.co.uk



sales@sealey.co.uk