



18" SURFACE CLEANER, DUAL HANDLE & ROTATING SPRAY BAR – STAINLESS STEEL

MODEL NO: PWAK18

Thank you for purchasing a Sealey product. Manufactured to a high standard, this product will, if used according to these instructions, and properly maintained, give you years of trouble free performance.

IMPORTANT: PLEASE READ THESE INSTRUCTIONS CAREFULLY. NOTE THE SAFE OPERATIONAL REQUIREMENTS, WARNINGS & CAUTIONS. USE THE PRODUCT CORRECTLY AND WITH CARE FOR THE PURPOSE FOR WHICH IT IS INTENDED. FAILURE TO DO SO MAY CAUSE DAMAGE AND/OR PERSONAL INJURY AND WILL INVALIDATE THE WARRANTY. KEEP THESE INSTRUCTIONS SAFE FOR FUTURE USE.



Refer to
instructions



Wear eye
protection



Wear safety
footwear

1. SAFETY

- ☐ **WARNING!** Read and understand all instructions. Failure to follow all instructions may result in serious injury or property damage.
- ✓ The warnings, cautions, and instructions in this manual cannot cover all possible conditions or situations that could occur. Exercise common sense and caution when using this tool. Always be aware of the environment and ensure that the tool is used in a safe and responsible manner.
- ✗ **DO NOT** allow persons to operate or assemble the product until they have read this manual and have developed a thorough understanding of how it works.
- ✗ **DO NOT** modify this product in any way. Unauthorized modification may impair the function and/or safety and could affect the life of the product. There are specific applications for which the product was designed.
- ✓ Use the right tool for the job. **DO NOT** attempt to force small equipment to do the work of larger industrial equipment. There are certain applications for which this equipment was designed. It will do the job better and more safely at the capacity for which it was intended.
- ✗ **DO NOT** use this equipment for a purpose for which it was not intended.

1.1. WORK AREA SAFETY

- ✓ Inspect the work area before each use. Keep work area clean, dry, free of clutter, and well lit. Cluttered, wet, or dark work areas can result in injury. Using the product in confined work areas may put you dangerously close to other cutting tools and rotating parts.
- ✗ **DO NOT** use the product where there is a risk of causing a fire or an explosion; e.g., in the presence of flammable liquids, gases, or dust. The product can create sparks, which may ignite the flammable liquids, gases, or dust.
- ✗ **DO NOT** allow the product to come into contact with an electrical source. The tool is not insulated and contact will cause electrical shock.
- ✓ Keep children and bystanders away from the work area while operating the tool. **DO NOT** allow children to handle the product.
- ✓ Be aware of all power lines, electrical circuits, water pipes, and other mechanical hazards in your work area. Some of these hazards may be hidden from your view and may cause personal injury and/or property damage if contacted.

1.2. PERSONAL SAFETY

- ✓ Stay alert, watch what you are doing, and use common sense when operating the tool. **DO NOT** use the tool while you are tired or under the influence of drugs, alcohol, or medication. A moment of inattention while operating the tool may result in serious personal injury.
- ✓ Dress properly. **DO NOT** wear loose clothing, dangling objects, or jewellery. Keep your hair, clothing and gloves away from moving parts. Loose clothes, jewellery, or long hair can be caught in moving parts. Air vents on the tool often cover moving parts and should be avoided.
- ✓ Wear the proper personal protective equipment when necessary. Use compliant safety goggles (not safety glasses) with side shields, or when needed, a face shield. Use a dust mask in dusty work conditions. Also use non-skid safety shoes, hard hat, gloves, dust collection systems, and hearing protection when appropriate. This applies to all persons in the work area.
- ✗ **DO NOT** overreach. Keep proper footing and balance at all times.
- ✗ **DO NOT** use the tool when tired or under the influence of drugs, alcohol or medication.
- ✓ Remove keys or wrenches before connecting the tool to an air supply, power supply, or turning on the tool. A wrench or key that is left attached to a rotating part of the tool may cause personal injury.

1.3. CLEANER USE AND CARE

- ✗ **DO NOT** force the cleaner. Tools do a better and safer job when used in the manner for which they are designed. Plan your work, and use the correct tool for the job.
- ✓ Check for damaged parts before each use and before connecting the cleaner to a pressure washer. Carefully check that the cleaner will operate properly and perform its intended function. Replace damaged or worn parts immediately. Never operate the cleaner with a damaged part.
- ✓ Store the cleaner when it is not in use. Store it in a dry, secure place out of the reach of children. Inspect the cleaner for good working condition prior to storage and again before re-use.
- ✓ Use only replacement parts that are recommended by the distributor. Parts that may be suitable for one cleaner may create a risk of injury when used with another cleaner. Never use a part that has a lower operating pressure than the cleaner itself.
- ✗ **DO NOT** leave the cleaner unattended when it is pressurized.
- ✗ **WARNING!** Disconnect from pressure washer to avoid high-pressure spraying water that could cause personal injury.

1.4. SPECIFIC OPERATION WARNINGS

- ✗ **DO NOT** exceed the rated PSI capacity.
- ✓ Keep body parts clear of nozzle heads and away from skirt while operating machine.
- ✓ Be aware of the pressure washer supplying the high pressure supply.
- ✗ **DO NOT** lift machine from surface or point nozzle heads at people while operating.
- ✓ Wear the proper safety gear including approved safety glasses.
- ✓ Use only on hard level surfaces.
- ✓ No alterations shall be made to this product.
- ✓ Only attachments and/or adapters supplied by the manufacturer shall be used.
- ✗ Not for use by or around children.

2. INTRODUCTION

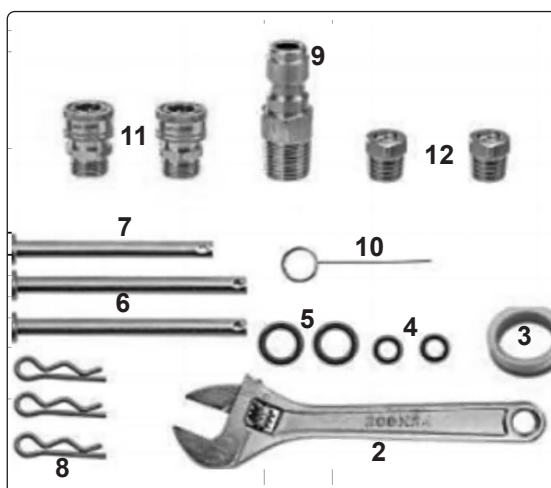
18" pressure washer surface cleaner ideal for patios, driveways, and large flat surfaces. Ergonomic twin handles provide enhanced grip and manoeuvrability. Heavy-duty rust-resistant stainless steel housing built for long-term use. Smooth-rolling wheels ensure stability and effortless movement. High-speed rotating spray bar with a nozzle at each end delivers powerful, even cleaning. Supplied with hose, hose connectors, adaptors, PTFE tape, and spanner.

3. SPECIFICATION

Model No:.....PWAK18
Nett Weight: 8.75kg
Connection:..... 1/4" Quick Plug
Max Pressure:.....4000psi

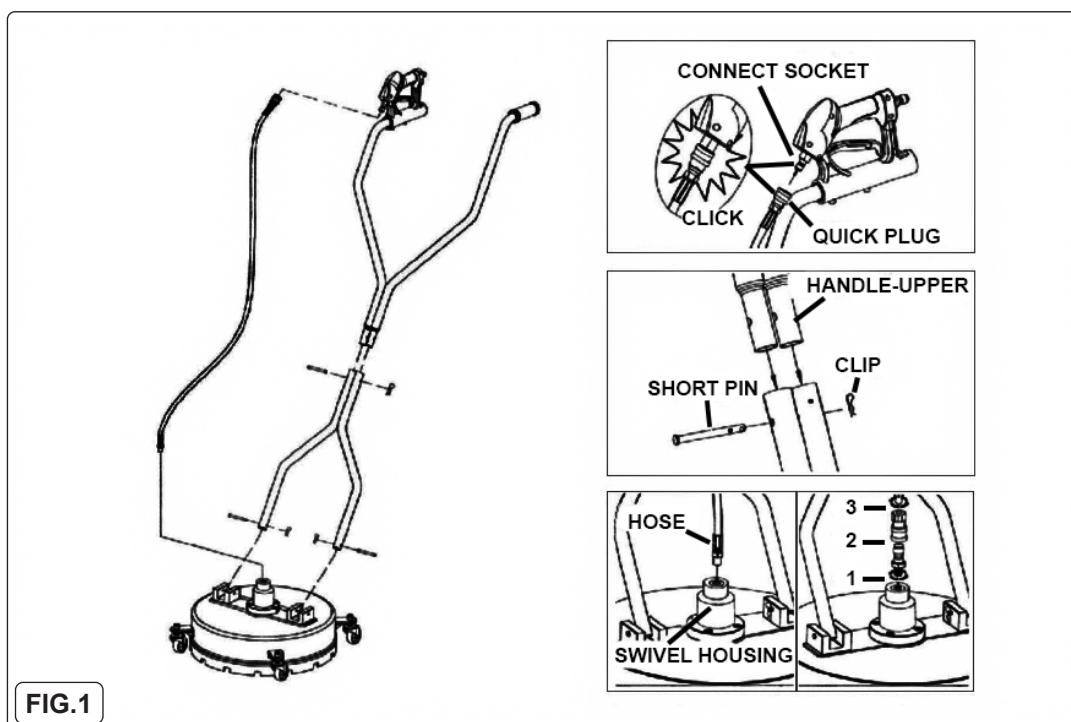
Min Pressure:..... 725psi
Max Water Flow:15LPM
Min Water Flow:6.7LPM
Max Water Temperature: 60°C

4. CONTENTS



#	QTY	DESCRIPTION
1	1	Main assembly
2	1	Adjustable wrench
3	1	Roll of PTFE tape
4	2	6mm rubber seals
5	2	11mm rubber seals
6	2	72mm pin
7	1	62mm pin
8	3	Hitch pin clips
9	1	Male screw adaptor
10	1	Pin key
11	2	Hose end connectors
12	1	Spare nozzles

5. ASSEMBLY



- 5.1. Line up the holes on the lower part of handle with the holes on the cover assembly. Insert the long pins through the handle and cover holes and attach to the clips (fig.1)
- 5.2. Attach the upper handle by lining up the hole in the upper and lower handle. Push the short pin through the aligned hole and attach to the clip.
- 5.3. Connect the hose to the trigger handle and to the swivel located on the unit base.
NOTE: package includes 1/4" quick connect set for quicker connection.
- 5.4. Locate the high pressure discharge hose on your pressure washer and ensure it is securely connected to the water outlet of the pressure washer. Quick connect the other end of the high pressure discharge hose to the gun on the Rotary Surface Cleaner.
- 5.5. Connect the water supply hose, one end to your pressure washer, the other end to a pressurized water supply.

6. OPERATION

6.1. SURFACE PREPARATION

Clear any loose debris from the area to be cleaned. **NEVER** attempt to clean surface with objects that protrude from the surface being cleaned. Striking any raised obstacle during operation will damage machine. If contact does occur and results in vibration when operating machine, **STOP** cleaning and check the spray bar.



6.2. START-UP

- 6.2.1. Lock the trigger in the OFF position by rotating the lever 90° so it rests against the handle grip (fig.2).
 - 6.2.2. Ensure all connections are secure.
 - 6.2.3. Unlock the trigger gun and squeeze the trigger while starting the pressure washer.
 - 6.2.4. Water will begin flowing from the nozzles of the surface cleaner. **NOTE:** the trigger can also be locked ON via the clip as shown in fig.2.
IMPORTANT: Ensure nozzles are not clogged and spray pattern is not erratic. Turn the pressure washer, disconnect from water supply and change nozzles before proceeding if problems exist.
 - 6.2.5. Walk slowly behind the unit, cleaning as you go. If striping occurs, slow down the pace.
- ✱ **DO NOT** allow machine to remain stationary on soft surfaces such as wood.

6.3. SHUT-DOWN

- 6.3.1. Turn the pressure washer off.
- 6.3.2. Turn the water supply off.
- 6.3.3. Squeeze the trigger gun to relieve water pressure.
- 6.3.4. Disconnect and drain the water hose, and wipe down the unit.
- 6.3.5. Store the unit in a dry environment.

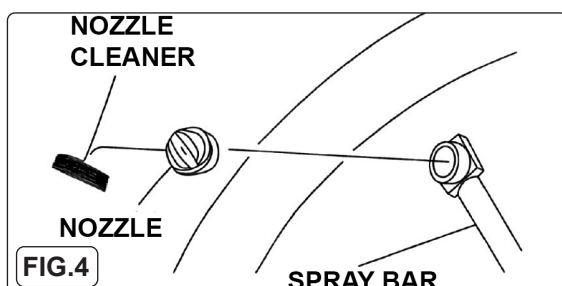
6.4. AFTER EACH USE

Perform the following inspections after each use to clean the cleaner and ready it for the next use.

- 6.4.1. Clean out any dirt or foreign material from under the housing and the castors. If necessary, use a cloth or sponge to wash the surface cleaner and rinse with tap water.
- 6.4.2. Check for loose parts and any damage.

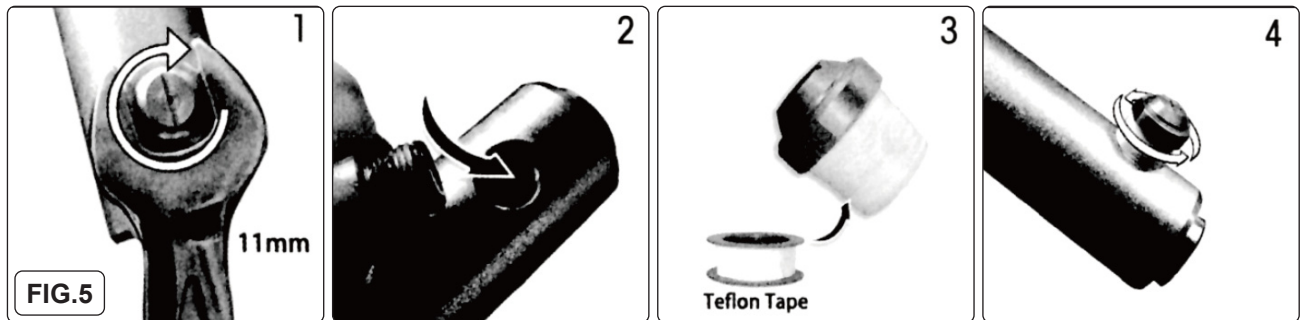
7. MAINTENANCE

- ☐ **WARNING!** Check all fixings regularly to ensure components do not come loose.



7.1. NOZZLE CLEANING (FIG.4)

- 7.1.1. Excessive pump pressure (a pulsing sensation felt while squeezing the trigger) OR inadequate cleaning power may be the result of a clogged or dirty nozzle.
- 7.1.2. Turn off the pressure washer and shut off the water supply. Pull trigger to release water pressure and disconnect surface cleaner from high pressure hose.
- 7.1.3. Using a wrench, remove the nozzle from the spray bar. Use a nozzle cleaner to clean the nozzles.
- 7.1.4. Using a garden hose, flush debris out of nozzle by back flushing (running the water through the nozzle backwards or from the outside to the inside).
- 7.1.5. Reconnect the nozzle to the spray bar and tighten securely.



7.2. NOZZLE REPLACEMENT (FIG.5)

- 7.2.1. Turn off the pressure washer and shut off the water supply. Pull trigger to release water pressure and disconnect surface cleaner from high pressure hose.
- 7.2.2. Remove the nozzle from spray bar with an appropriate wrench.
- 7.2.3. Rinse mounting holes with fresh water to clean impurity.
- 7.2.4. Cover new nozzles thread with attached teflon tape.
- 7.2.5. Align the nozzle opening. Reinstall nozzles to the spray bar. Tighten securely.

NOTE: if the nozzle is difficult to remove, please heat it with a hot blower before removing.

8. TROUBLESHOOTING

PROBLEM	POSSIBLE CAUSE	SOLUTION
Missing parts	Damaged package	Contact our Customer Service for help
Inadequate cleaning power	Not enough PSI from pressure washer	Ensure unit produces a minimum pressure washer 2,000 PSI. Most effective cleaning range is 2,000-4000 PSI
	Inadequate water supply	Turn water supply completely "ON" and/ or clean water filter on pressure washer.
	Nozzle obstructed or worn	Clean or replace the nozzles
Spray bar will not rotate	Defective. Snap ring dislodged	DO NOT use.
	Unstable connection, the spray bar fell off	Contact our Customer Service for help
	Seal malfunction. Water shooting from swivel	
	Bearing failure	
Excessive vibration of surface cleaner	Nozzle clogged	Clean or replace the nozzles
	Spray bar, bolts or fittings	Tighten
Streaked cleaning pattern	Inadequate water supply	Turn water supply completely "ON" and/ or clean water filter on pressure washer
	Nozzle clogged	Clean or replace the nozzles
	Cleaning too fast	Slow down pace



ENVIRONMENT PROTECTION

Recycle unwanted materials instead of disposing of them as waste. All tools, accessories and packaging should be sorted, taken to a recycling centre and disposed of in a manner which is compatible with the environment. When the product becomes completely unserviceable and requires disposal, drain any fluids (if applicable) into approved containers and dispose of the product and fluids according to local regulations.



REGISTER YOUR PURCHASE HERE

Note: It is our policy to continually improve products and as such we reserve the right to alter data, specifications and component parts without prior notice.

Important: No Liability is accepted for incorrect use of this product.

Warranty: Guarantee is 12 months from purchase date, proof of which is required for any claim.

Jack Sealey Ltd t/a Sealey Group, Kempson Way, Suffolk Business Park, Bury St Edmunds, Suffolk, IP32 7AR UK
Jack Sealey (EU) Ltd t/a Sealey Group, Farney Street, Carrickmacross, Co. Monaghan, A81 PK68 Ireland
Tel: 01284 757500 • **Email:** sales@sealey.co.uk • **Web:** www.sealey.co.uk